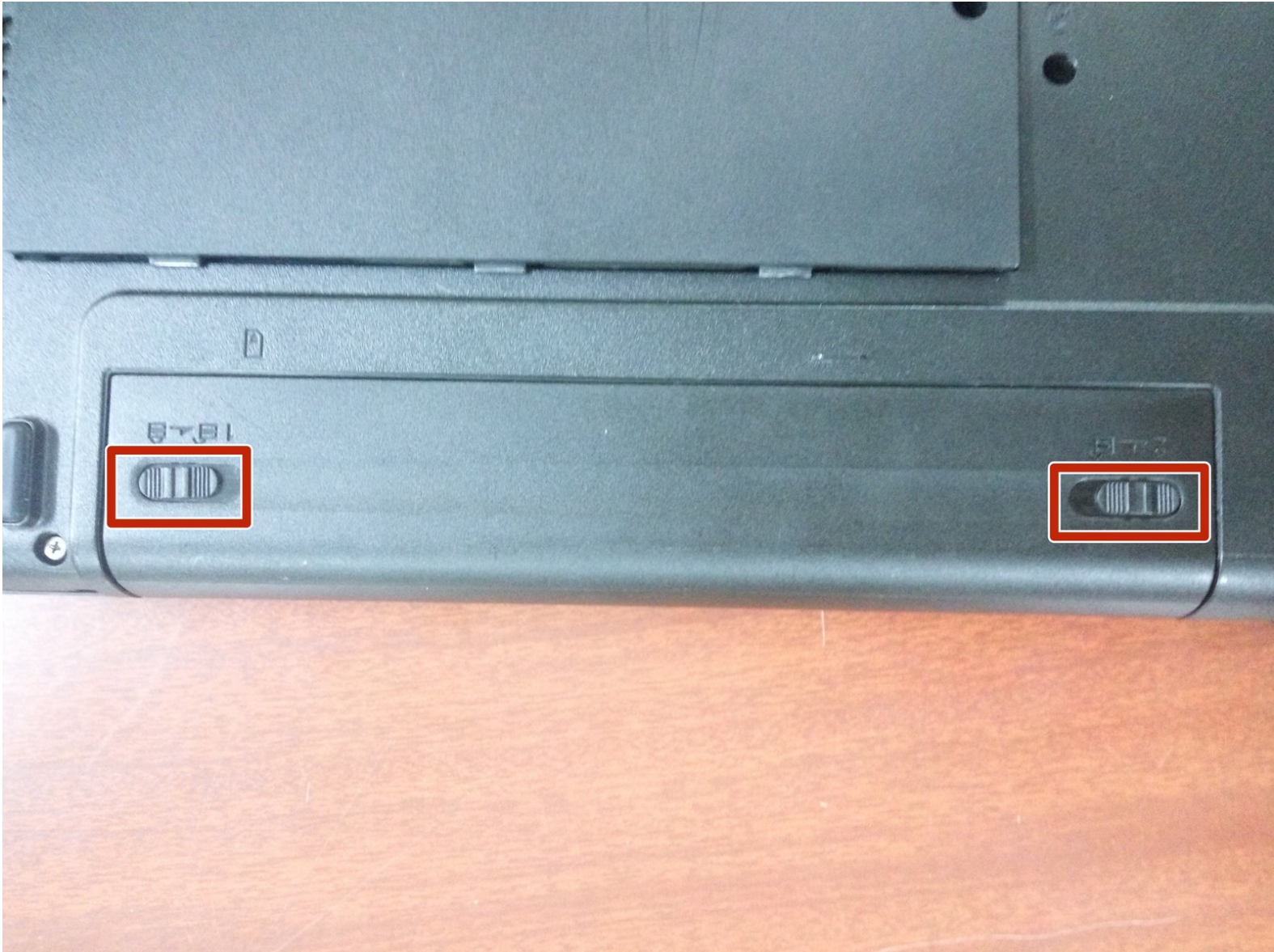




# Fujitsu Siemens Expression Mobile v5515

Written By: Caleb

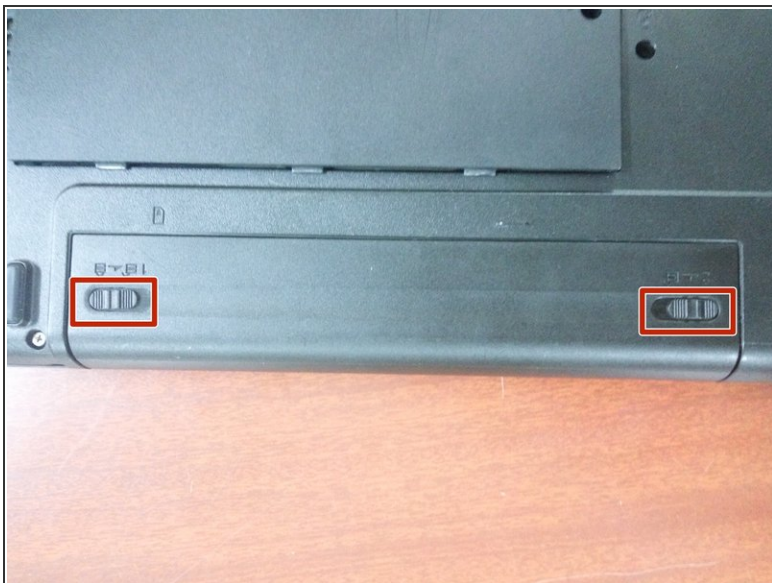




## TOOLS:

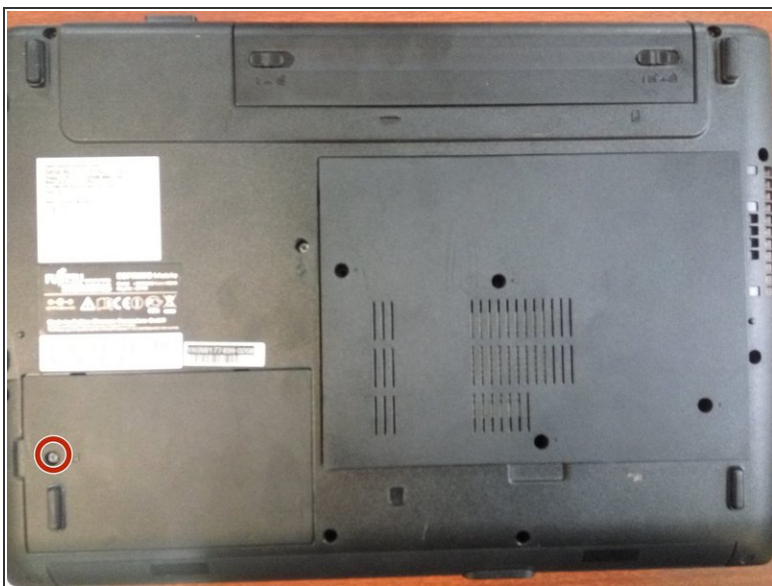
- [New Item](#) (1)
  - [New Item](#) (1)
-

## Step 1 — Remove the battery



- First, we unlock the battery so you can remove it by stretching it later.

## Step 2 — Remove the battery



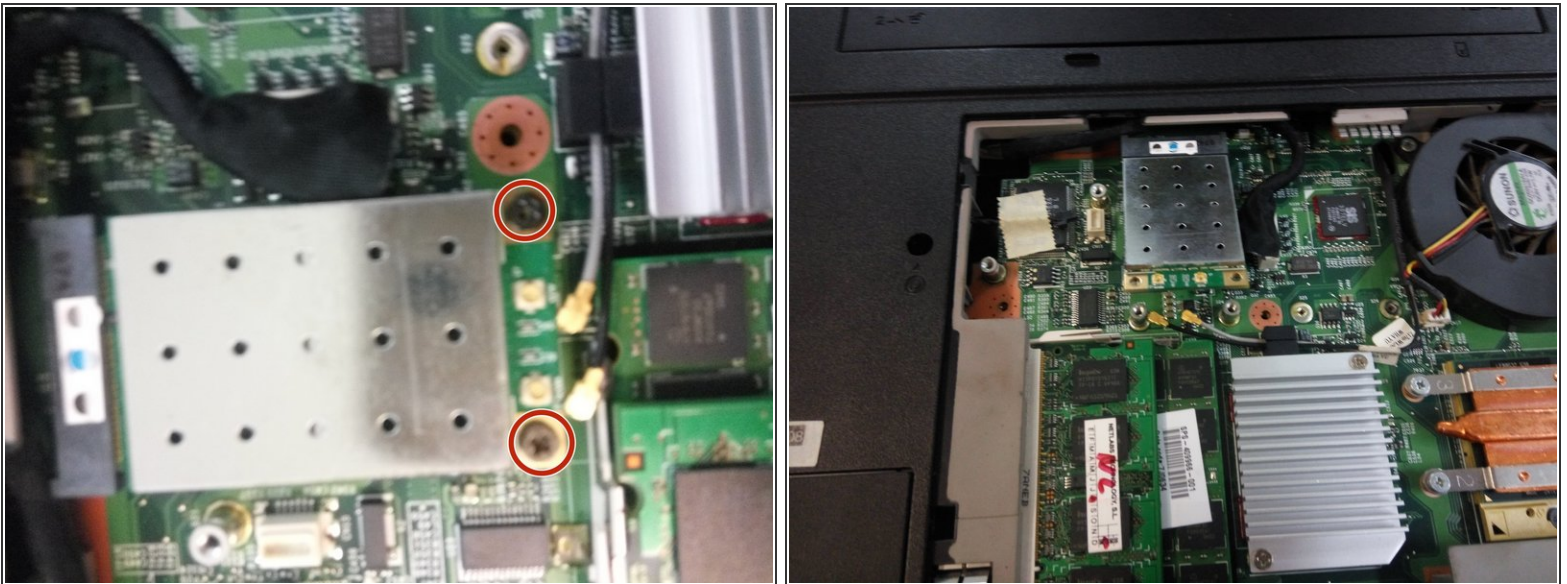
- First, we unlock the battery so you can remove it by stretching it later.

### Step 3 — Remove the ram



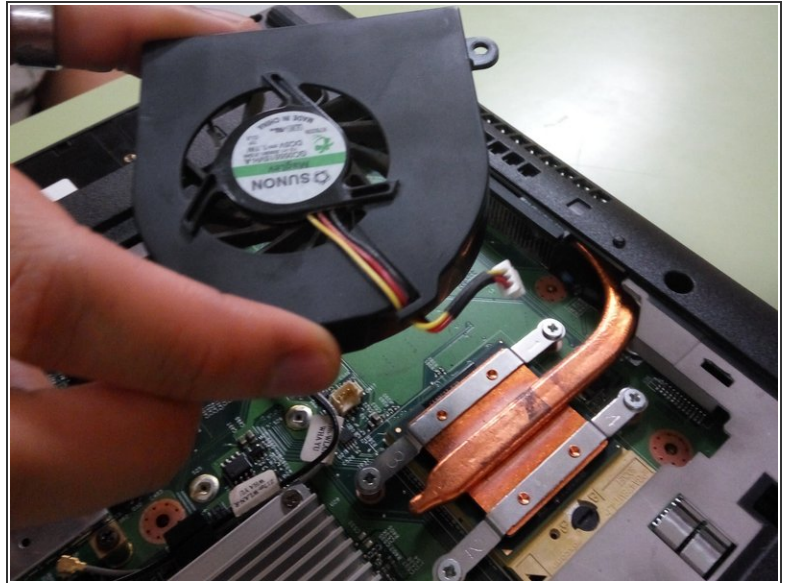
- First we unscrew the cover, after the triplet and lastly, we retrieved the RAM to do it, we just have to move the "tabs" that are to the sides and the RAM will go alone

### Step 4 — Remove the WIFI card



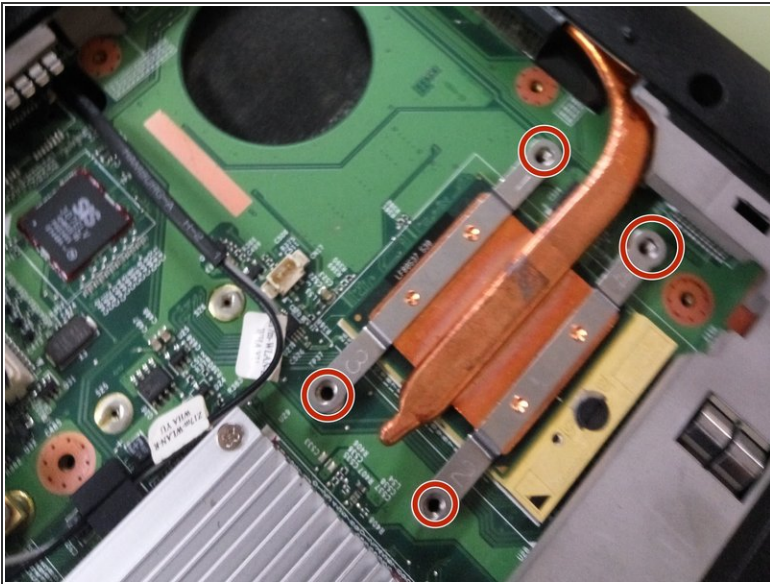
- First we unscrew the card and then go alone, we will have to disconnect it only

## Step 5 — Remove the fan.



- First, disconnect the power cord, and then unscrew the fan. Once we have taken it we can take advantage of it to open it to clean it up.

## Step 6 — Remove the heatsink



- First we unscrew the sinker, and then we take it away

## Step 7 — Remove the DVD player



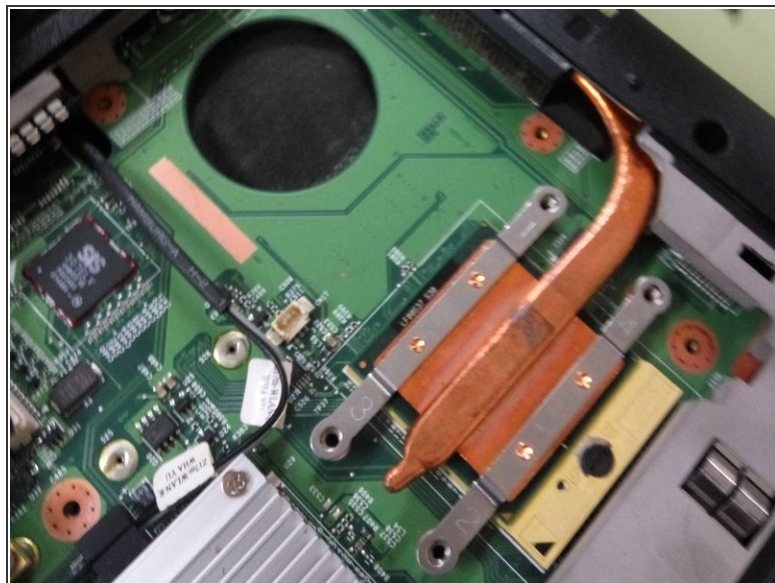
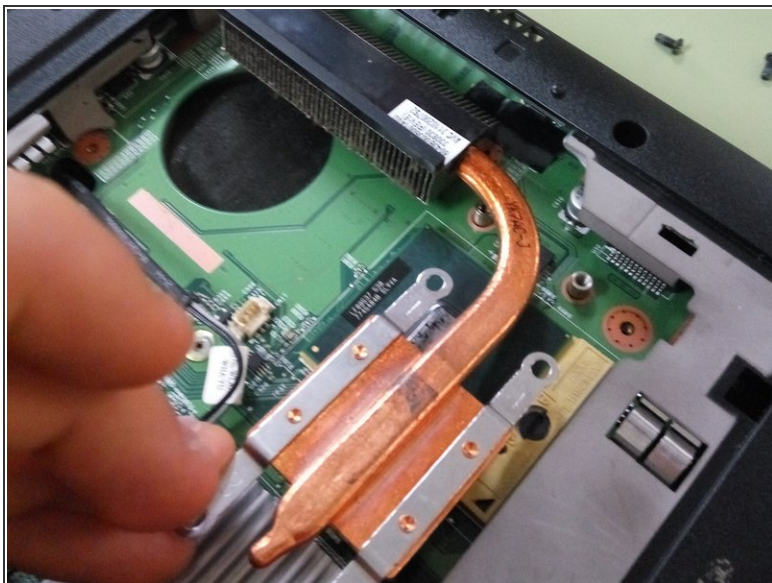
- We just have to unscrew and then stretch to remove it

## Step 8 — Mount the DVD player



- To mount it we have to do the opposite that when disassembling, you put it on and then put the screw

## Step 9 — Mount the heatsink



- We put the sink back into place and we screw it

## Step 10 — Mount the fan



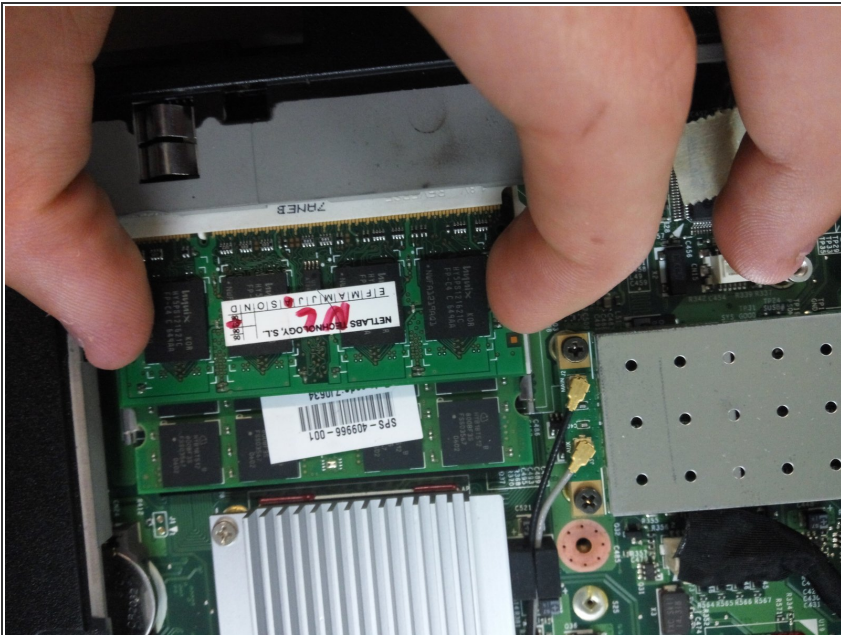
- Put the fan in place and screw it, we also have to connect the cable to the plate

## Step 11 — Mount the network card



- Now we place the network card in its place, download it and then screw it, finally we have to connect the cables in the corresponding order

## Step 12 — Assemble the RAM



- Now we have to place RAM, we just have to put it in place diagonally and then download it.

## Step 13 — Mount the hard drive



- Now we will put the hard disk, first put it in its space and we move it to connect it, then screw it and close the lid.

## Step 14 — Cover and put the battery



- We just have to put the lid, screw and put the battery in the battery, a wandering, we have to put the insurance.

To reassemble your device, follow these instructions in reverse order.