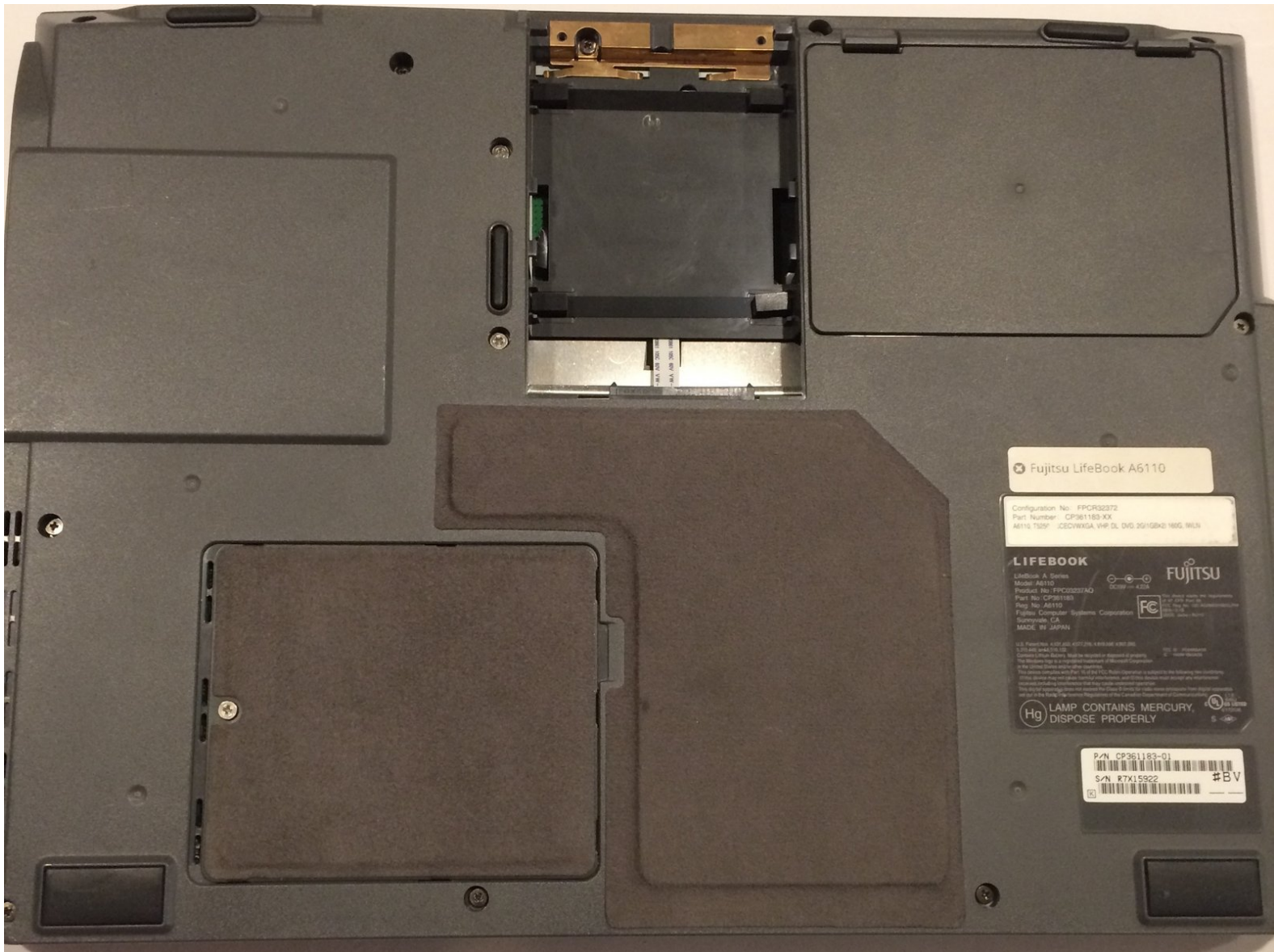




Fujitsu Lifebook Model A6110 Battery Replacement

Replacing the battery on your Fujitsu Lifebook Model A6110.

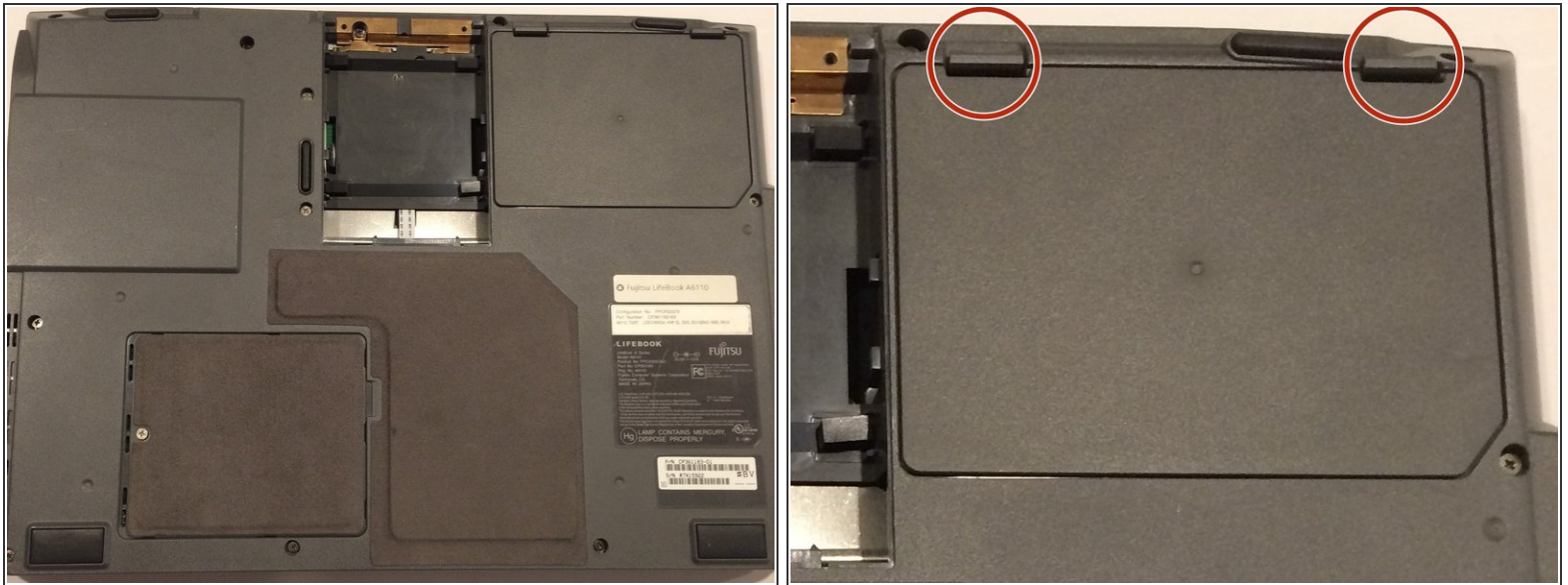
Written By: Alvin Thamrin



INTRODUCTION

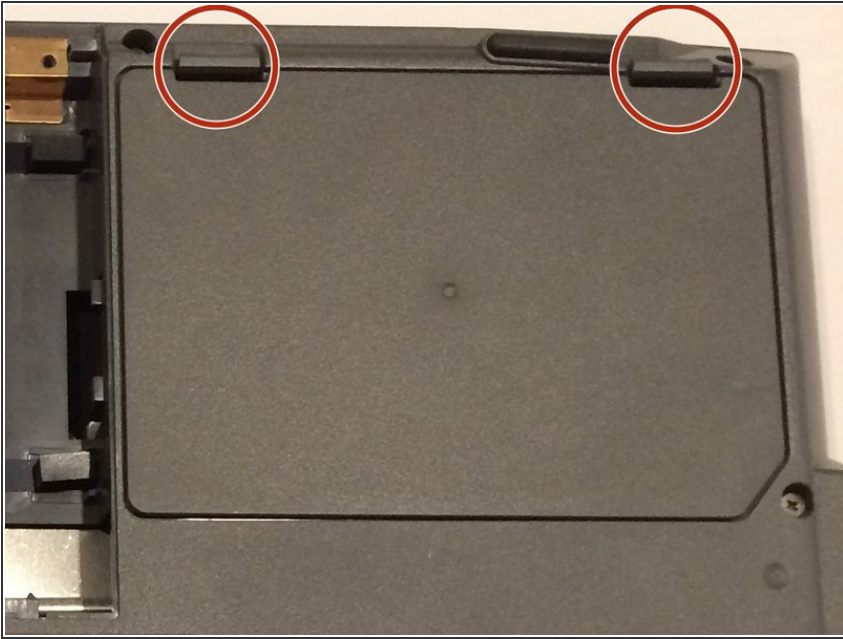
If your laptop's battery dies too fast, or the battery indicator drops too quickly, then the battery may need replacement. This guide will show you the steps to remove the battery from your laptop.

Step 1 — Battery



- ⚠ The computer should be turned off before starting. In addition, the laptop should remain closed throughout the duration of this replacement, unless otherwise noted.
- ⚠ Before handling any electronic components, you should ground yourself. This will prevent damage to the components from any charge you may be carrying. You can do this by touching any metal objects.
- Flip your laptop such that the bottom of the laptop is facing up.
- Make sure you can read the label on the bottom part. If the label is upside down, you will need to re-position the laptop until you can properly read it. As an alternative, the hinges for the screen should be facing towards you.

Step 2



- Place your fingers under the clips, and lift up on them while pulling them towards you.
- This will remove the battery.

To reassemble your device, follow these instructions in reverse order.