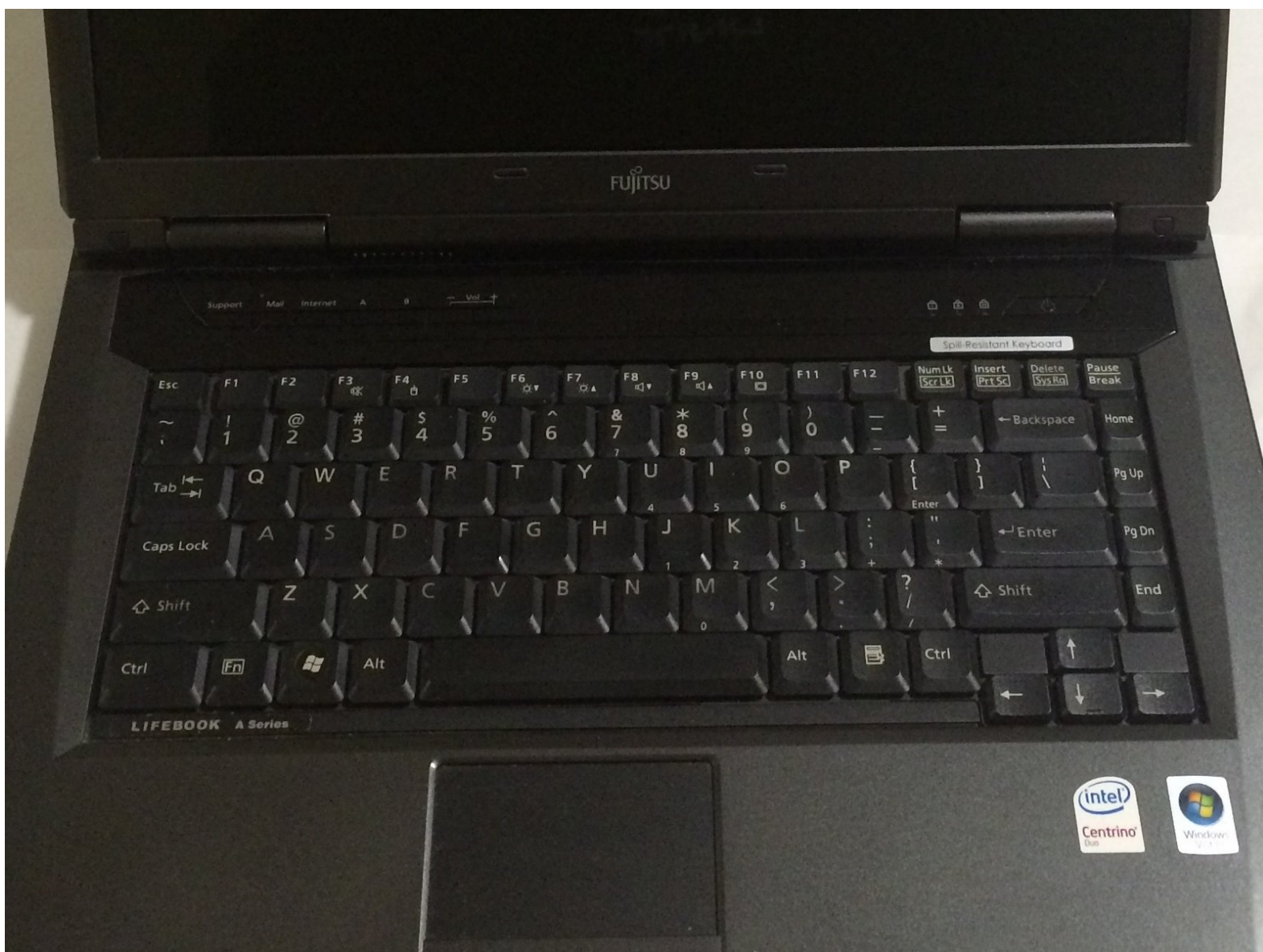




Fujitsu Lifebook Model A6110 Keyboard Replacement

This guide will provide you with a step-by-step process for locating and replacing the computer's keyboard.

Written By: Cody Moniz



INTRODUCTION

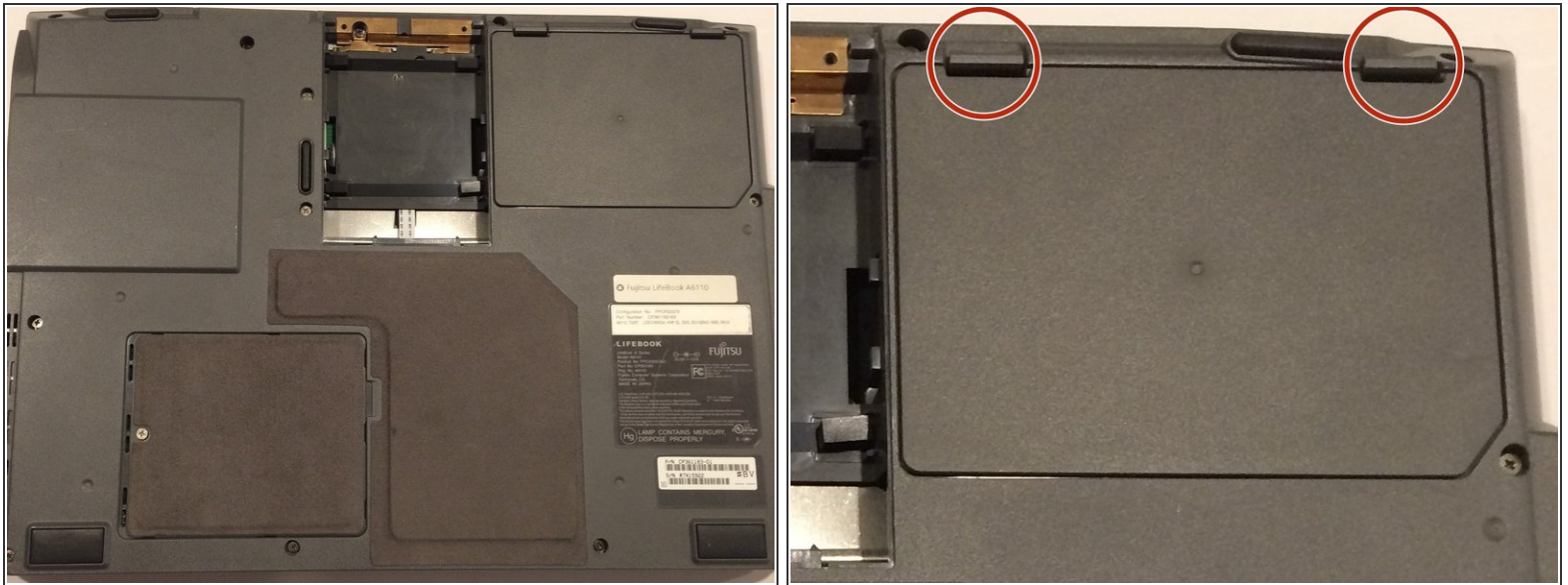
If keys on your laptop are not registering, you may need to replace your keyboard. This guide will walk you through the steps to complete this replacement.



TOOLS:

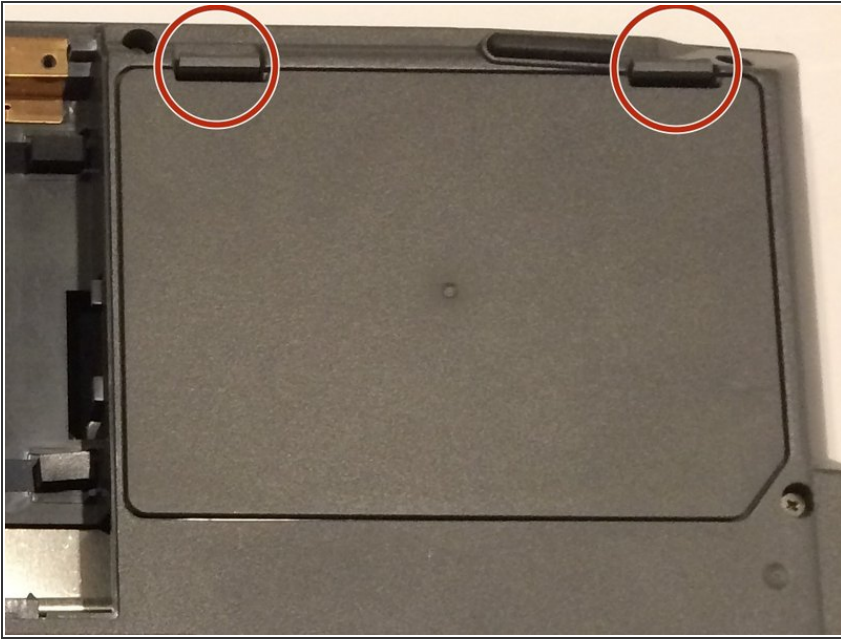
- [Phillips #1 Screwdriver](#) (1)
 - [Heavy-Duty Spudger](#) (1)
-

Step 1 — Battery



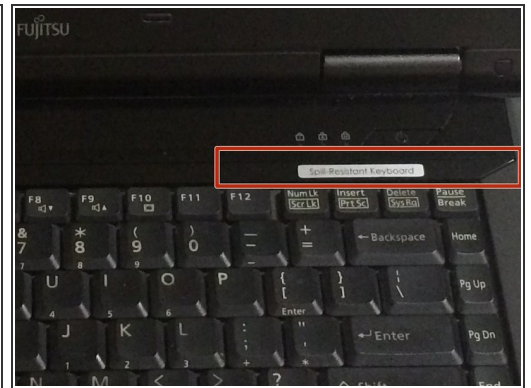
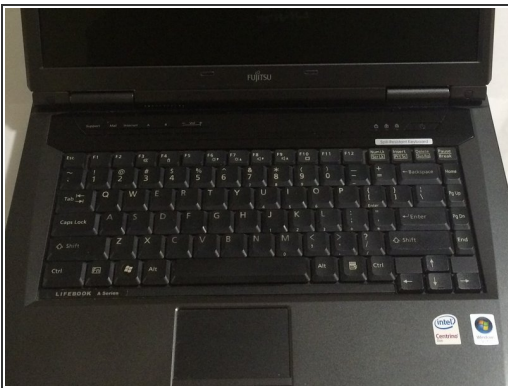
- ⚠ The computer should be turned off before starting. In addition, the laptop should remain closed throughout the duration of this replacement, unless otherwise noted.
- ⚠ Before handling any electronic components, you should ground yourself. This will prevent damage to the components from any charge you may be carrying. You can do this by touching any metal objects.
- Flip your laptop such that the bottom of the laptop is facing up.
- Make sure you can read the label on the bottom part. If the label is upside down, you will need to re-position the laptop until you can properly read it. As an alternative, the hinges for the screen should be facing towards you.

Step 2



- Place your fingers under the clips, and lift up on them while pulling them towards you.
- This will remove the battery.

Step 3 — Keyboard



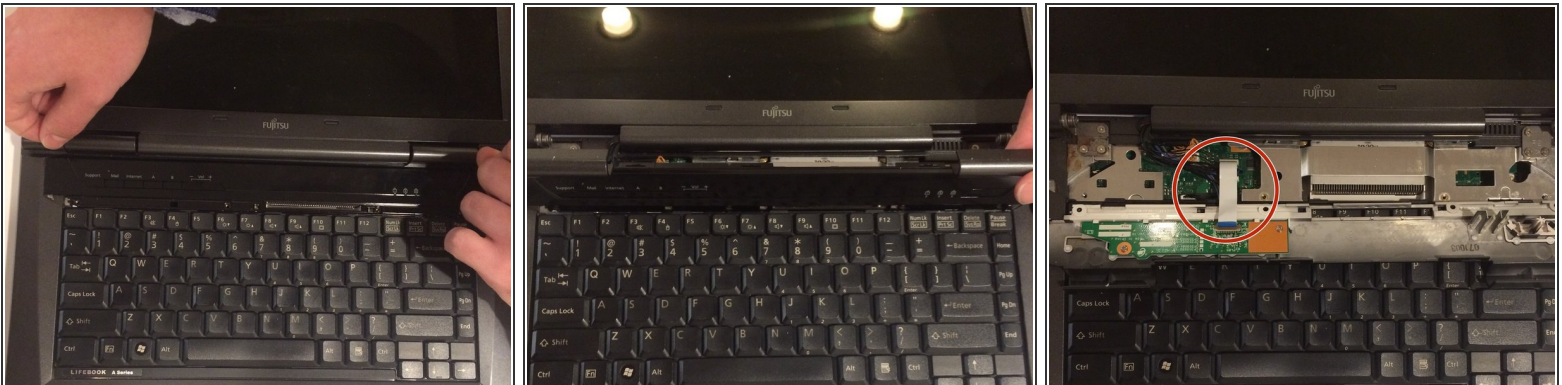
- Position the laptop like you would if you were to use it. Open the screen to a 180 degrees angle. The screen and the keyboard needs to face up before proceeding.
- Remove the plastic piece in the red square by using a plastic spudger.

Step 4



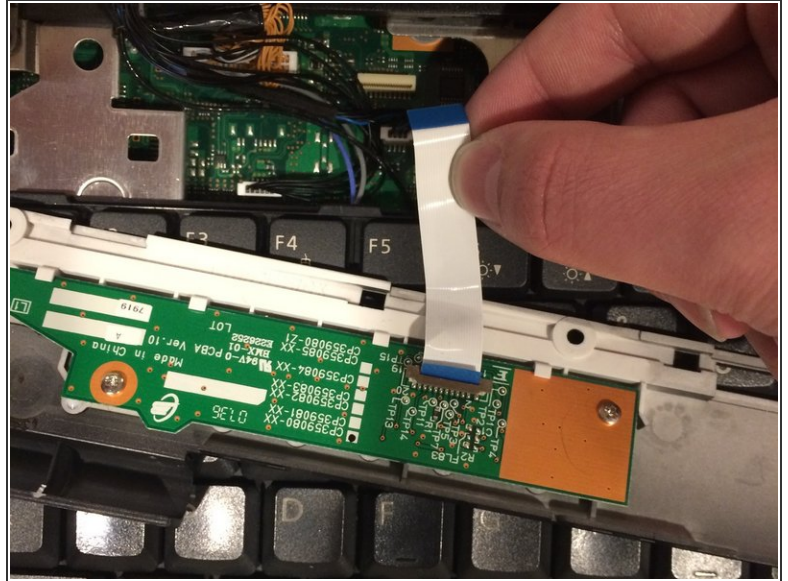
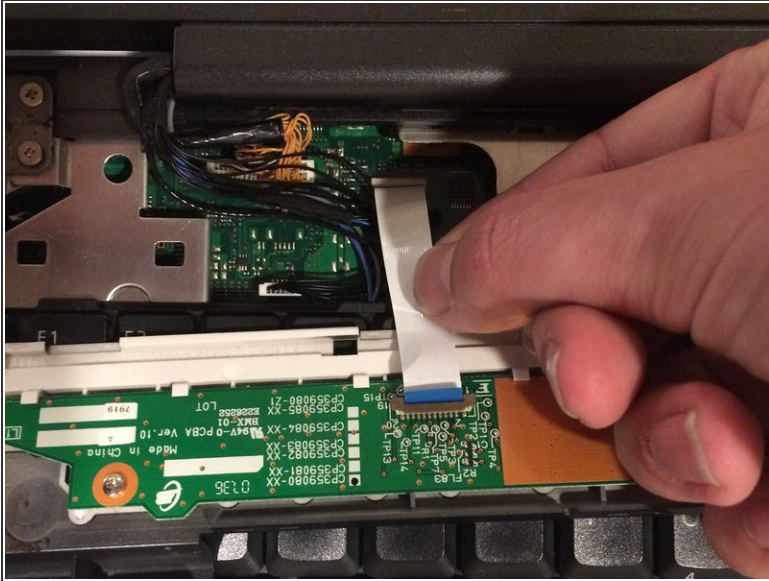
- Using a Phillips #1 screwdriver, remove the four 6 mm screws that were covered by the plastic piece that was just removed.

Step 5



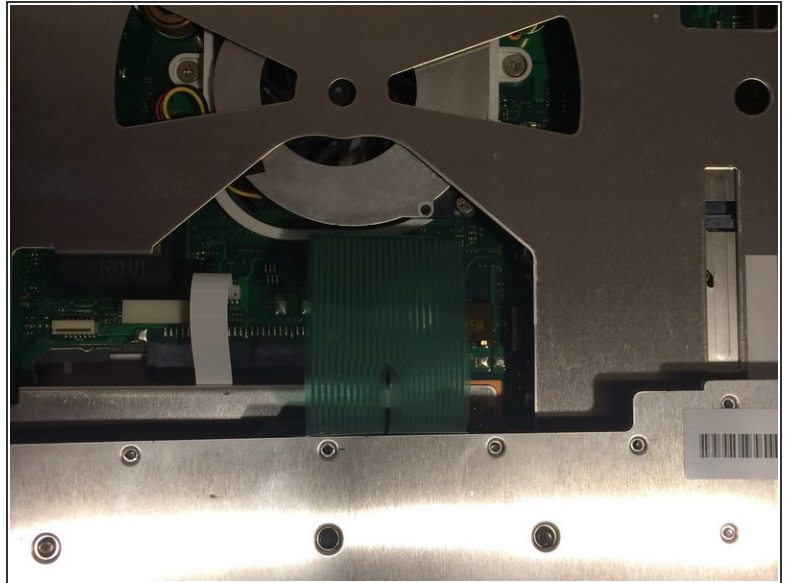
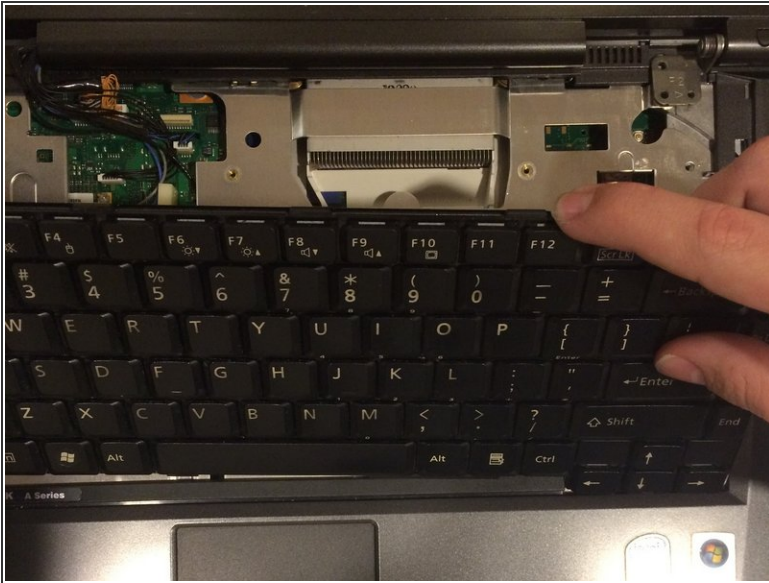
- Lift up on the inner edges of the hinges for the screen. This will detach the face-plate from the computer. Use a spudger to make this process easier.
- ⚠ There is a ribbon underneath this panel that attaches to the motherboard. Be careful to not rip this ribbon.
- The ribbon is in the top left hand corner and must be carefully removed from the motherboard as shown in the next step.

Step 6



- Detach the ribbon from the motherboard, which will allow you to finish removing the face-plate from the computer.
 - To detach the ribbon, grip the ribbon at the base that is attached to the motherboard, which is the large green circuit-board in the body of the computer.
- ☑ When reassembling the computer, make sure to reconnect the ribbons.

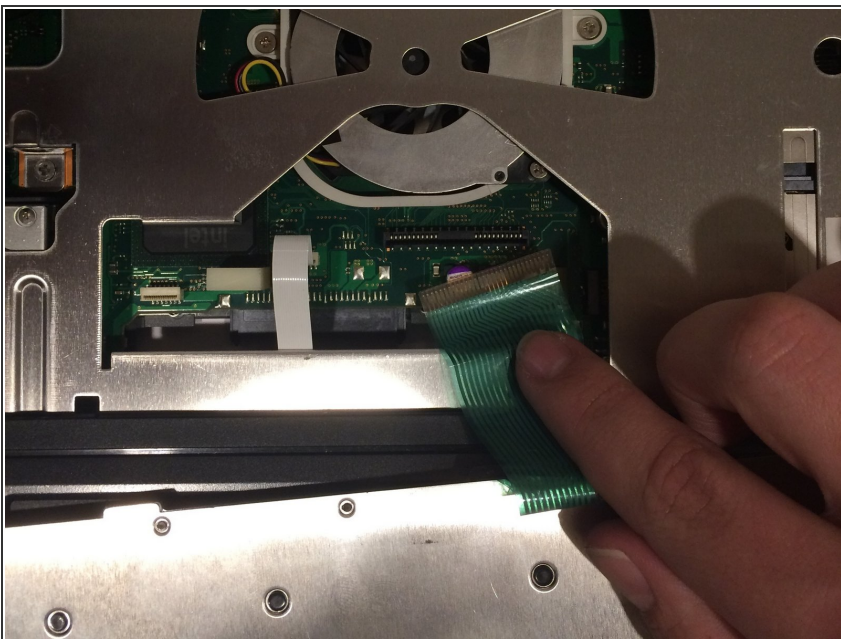
Step 7



- The keyboard is now free. Lift up on the keyboard.

⚠ There is another ribbon connecting the keyboard to the motherboard. Be careful not to rip it

Step 8



- Detach the ribbon from the motherboard
- To detach the ribbon, grip the ribbon at the base that is attached to the motherboard, which is the large green circuit-board in the body of the computer.

⚠ This ribbon may be difficult to remove, so be careful in pulling it. You could accidentally break it.

☑ When reassembling the computer, make sure to reconnect this ribbon.

To reassemble your device, follow these instructions in reverse order.