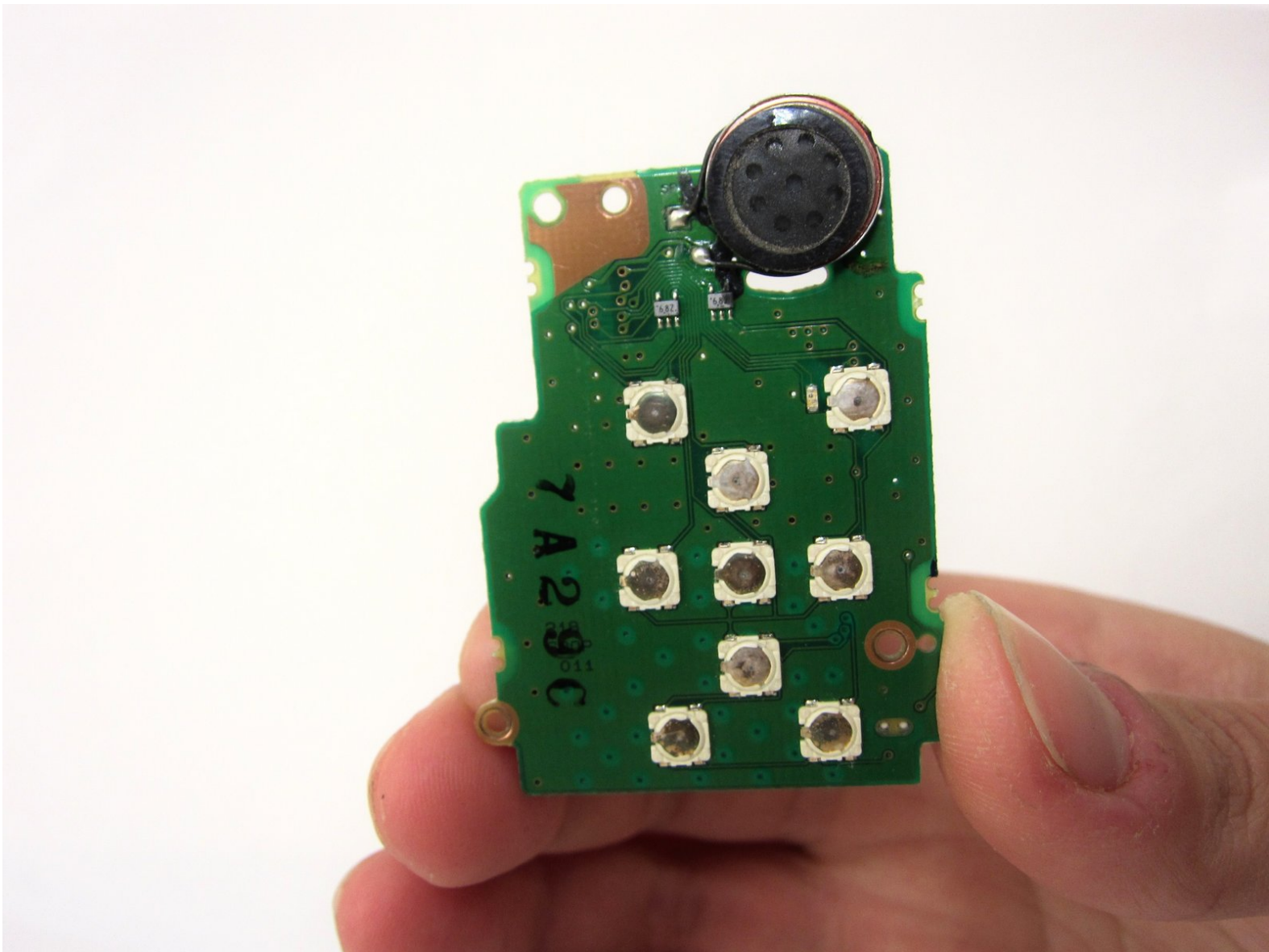




# Function Key Motherboard

This guide give step by step instructions on how to remove and replace a damaged function key motherboard on the Canon PowerShot A550.

Written By: Shaelyn Thomas



# INTRODUCTION

When the function keys fail to register, it may be because the function key motherboard has been damaged. This guide will show you how to replace the motherboard in question.

---

## TOOLS:

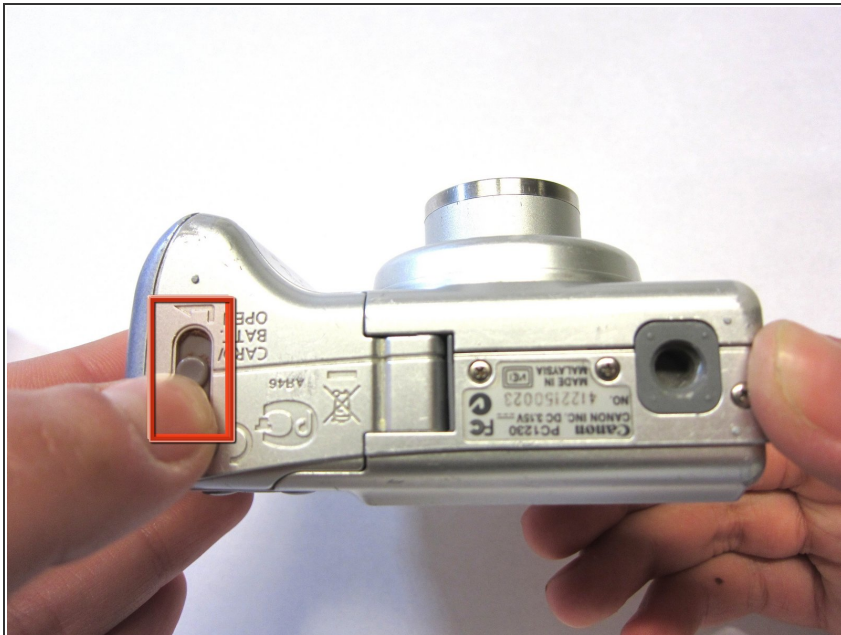
- [Phillips #00 Screwdriver](#) (1)
  - [Tweezers](#) (1)
  - [iFixit Opening Tools](#) (1)
-

## Step 1 — Front and Back Covers



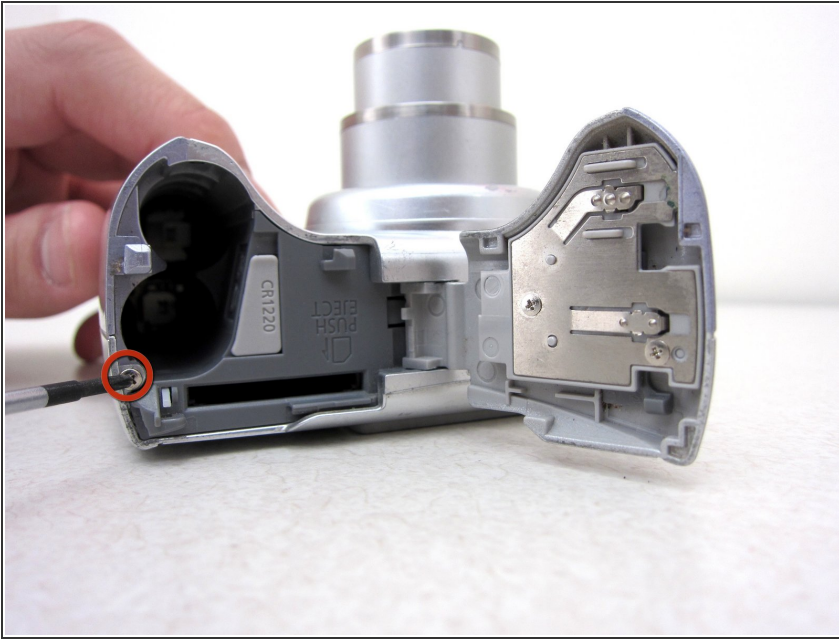
- Unscrew a total of 6 4.45 mm phillips head screws using a #00 phillips head screwdriver.
- There are 2 screws on the left side (when looking at the front of the camera).
- There are 3 screws on the bottom
- There is 1 screw on the right side

## Step 2



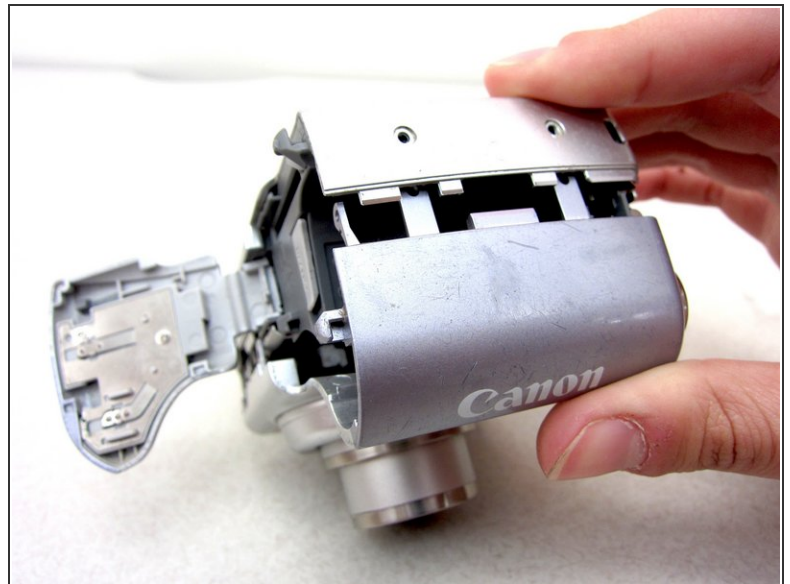
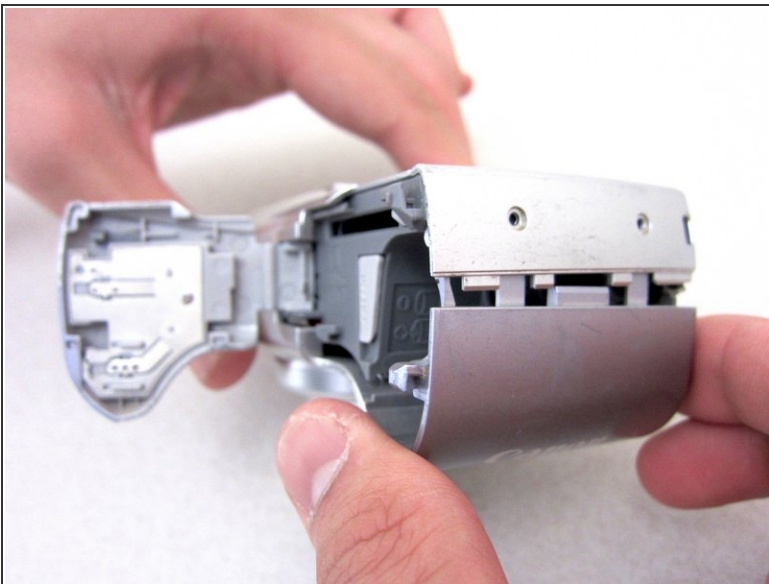
- Turn to the bottom of the camera.
- Open the memory card cover by sliding the "CARD/BATT." button up, and then pulling the cover to the left.

### Step 3



- This is what the SD card/battery compartment looks like when opened.
- Remove one 4.45mm phillips head screw from the SD card/battery compartment using a #00 phillips head screwdriver.

### Step 4



- Gently remove the front cover away from the camera body.
- ☞ Tip: Start by loosening the teeth on the left side of the camera next to the battery compartment.

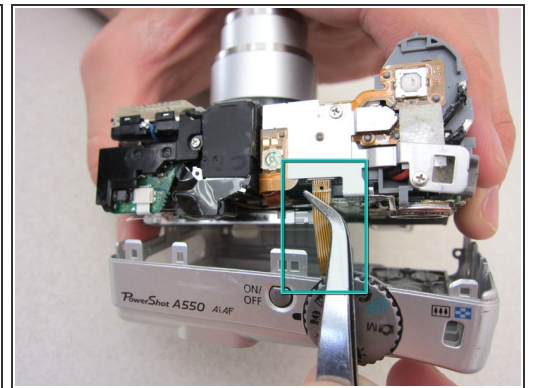
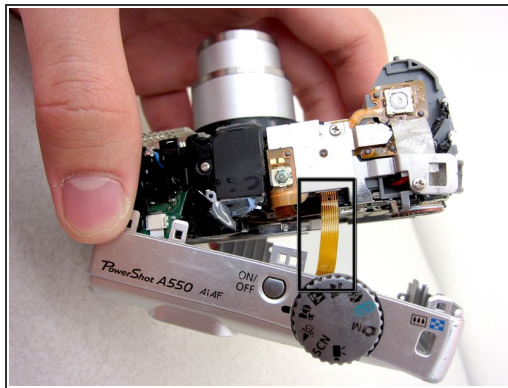
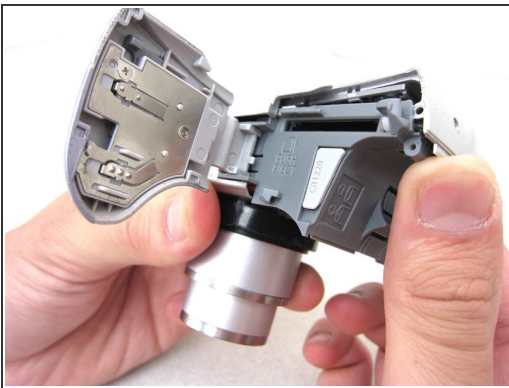


## Step 5



- The camera should look like this once the front cover is removed.

## Step 6

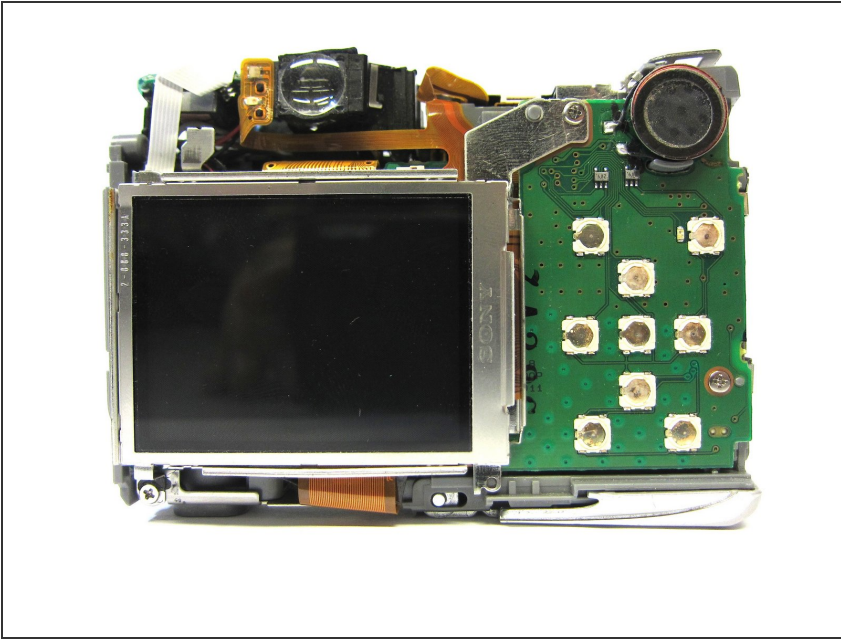


- Start from the battery compartment and remove the back cover.

⚠ Caution: Do not tug on the back cover after it is removed. This could tear the ribbon attaching the back cover to the camera body.

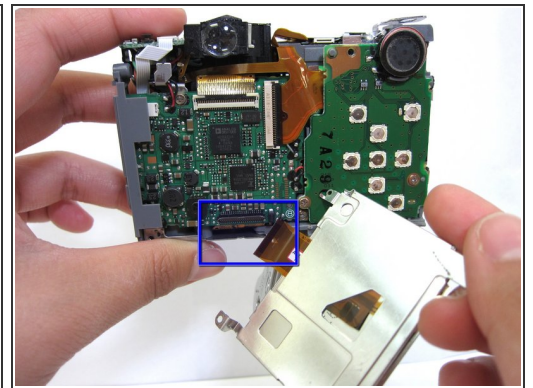
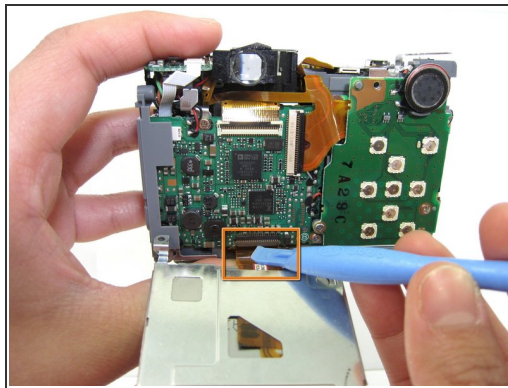
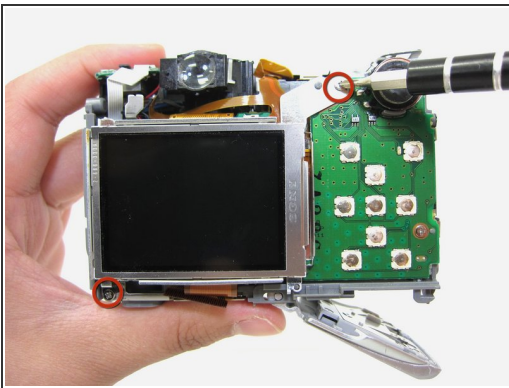
- Remove the connecting ribbon from the body of the camera using a pair of tweezers.

## Step 7



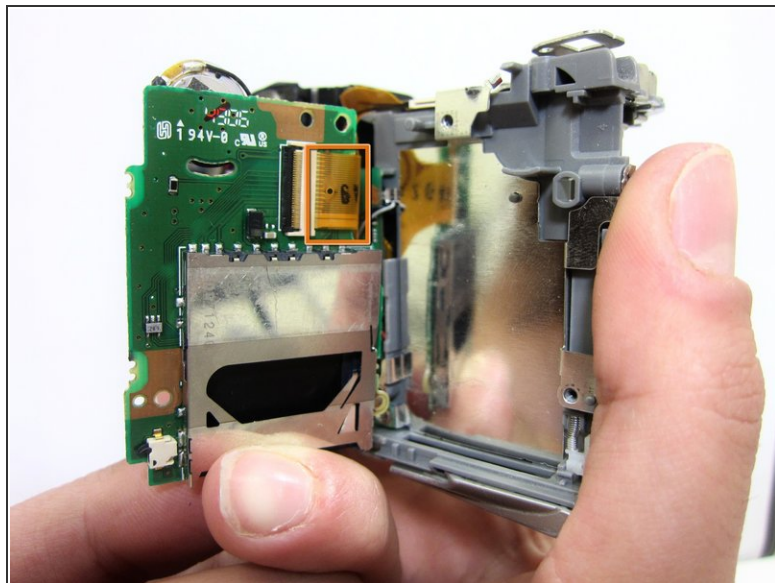
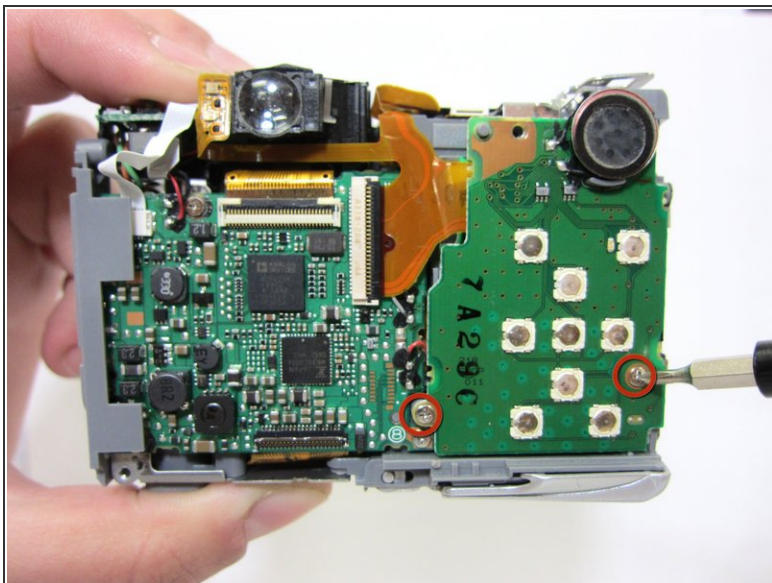
- Once the ribbon connecting the back cover is removed, the back of the camera body should look like this.

## Step 8 — Function Key Motherboard



- Remove 2 4.35mm phillips head screws from around the LCD screen using a #00 phillips head screwdriver.
- ⚠ Caution: Do not tug on the LCD screen because this could tear the ribbon connecting the LCD screen to the body of the camera.
- Loosen the black ribbon clamp using an iPod opening tool
- Release the LCD screen by removing the ribbon from the body of the camera.

## Step 9

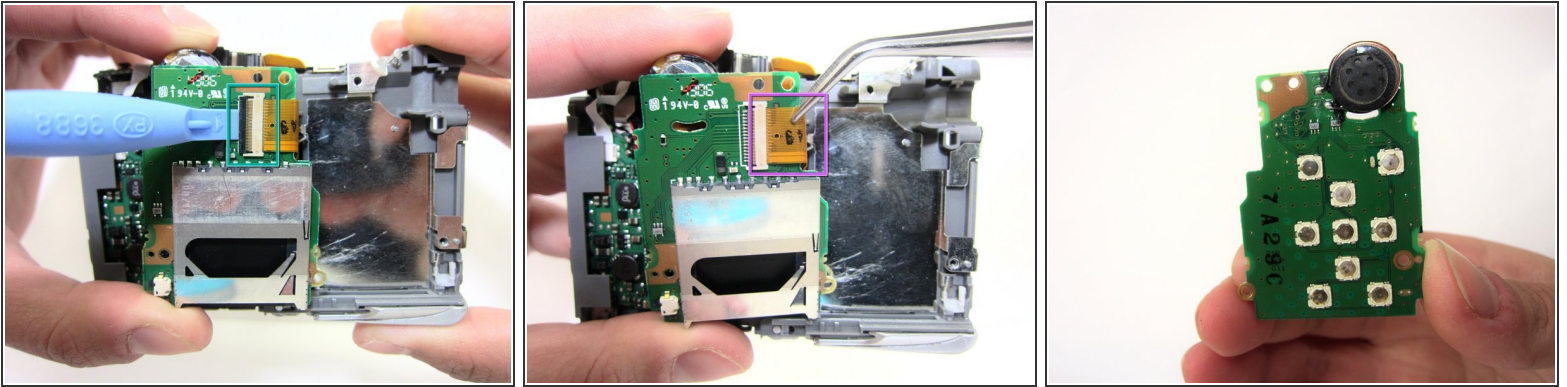


- Unscrew 2 3.35mm phillips head screw from the face of the function key motherboard using a #00 phillips head screwdriver.

⚠ Caution: Do not tug on the motherboard because this will tear the ribbon connecting the motherboard to the body of the camera.



## Step 10



- Release the black ribbon clamp attached to the back of the motherboard using an iPod opening tool to lift the clamp.
- Remove the ribbon connecting the function key motherboard from the body of the camera using tweezers.
- The function key motherboard has the SD card reader attached to the back. The motherboard and SD card combination should be replaced.

To reassemble your device, follow these instructions in reverse order.