



# Fusion5 5.5 Gen II Fingerprint Sensor Replacement

Use this guide to replace fingerprint sensor on Fusion5 5.5 Gen II.

Written By: Hwajin



## INTRODUCTION

If you need to replace the fingerprint sensor on Fusion5 5.5 Gen II, this guide will walk you through how to replace the component with ease.

Before taking your device apart, you can determine if it's necessary by referring to this [troubleshooting page](#).

This guide will require delicate handling as you disassemble your device to access the fingerprint sensor.

You should make sure to turn off your device and [ground](#) yourself.

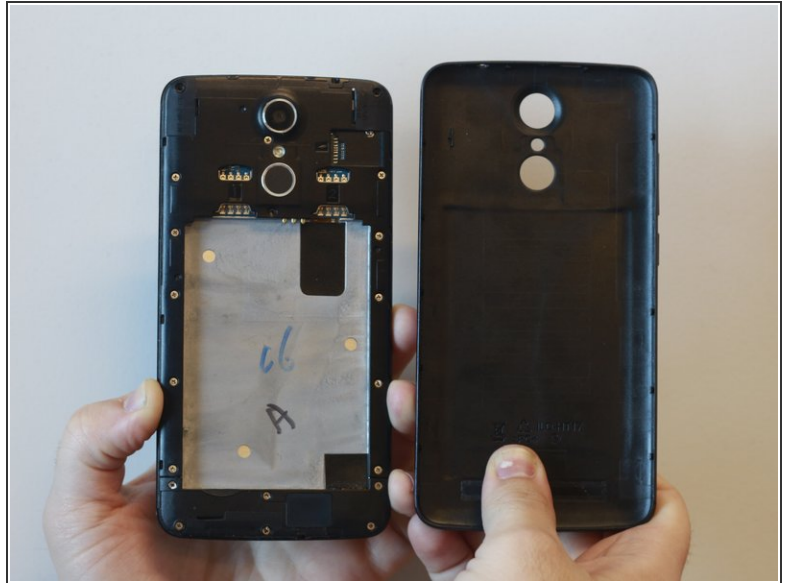
Please look into this [EPA](#) website on how to properly dispose of your electronic waste after finishing with the replacement of the fingerprint sensor.



### TOOLS:

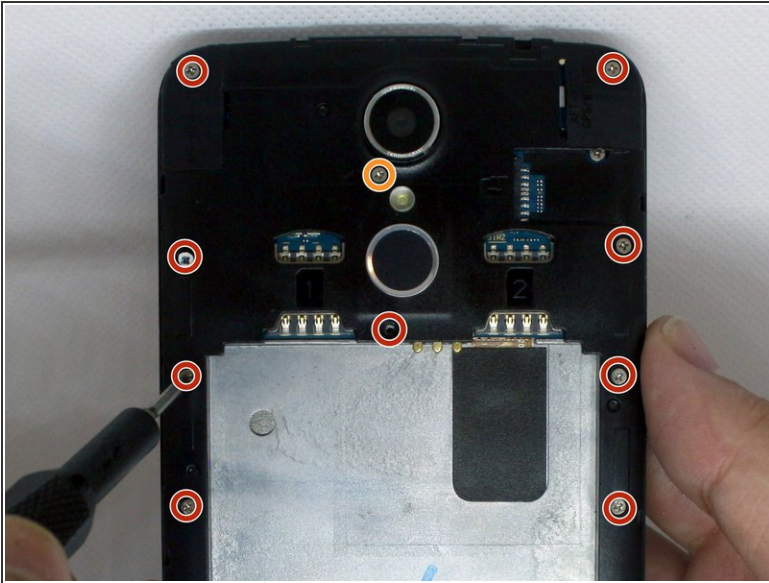
- [Phillips #00 Screwdriver](#) (1)
  - [iFixit Opening Picks set of 6](#) (1)
  - [Tweezers](#) (1)
-

## Step 1 — Back Cover



- Hold the device with the screen facing away from you and the back of the device facing you.
- Locate the groove at the bottom corner of the device.
- Begin prying the back cover of the device off from the groove and working your way around the outside edges of the device.

## Step 2 — Midframe



- Remove thirteen 3mm Phillips #00 screws from the midframe.
- Remove the single 5mm Phillips #0 screw below the camera.



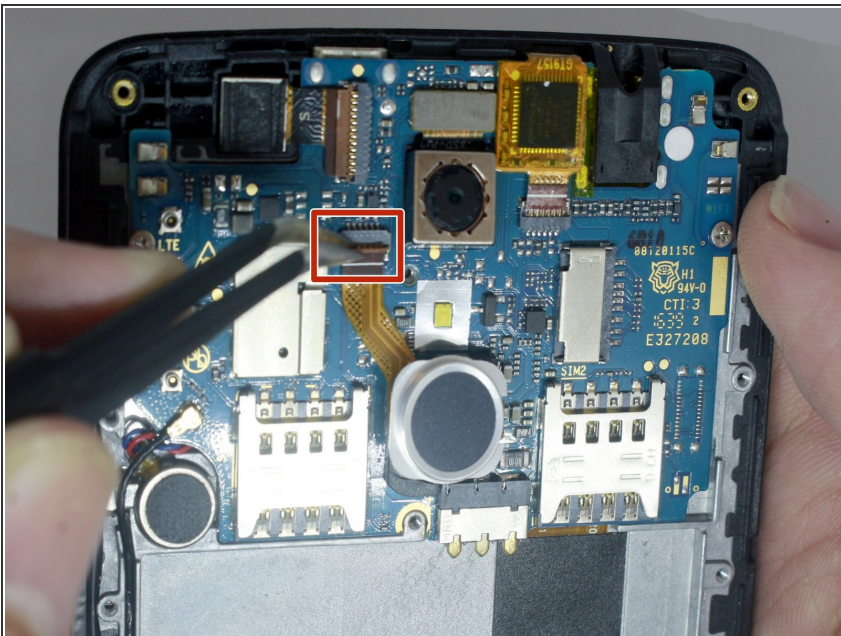
### Step 3



- Using an opening pick, begin prying one of the top corners to remove the midframe from the device.

⚠ Be careful not to damage the cables inside the device when you pry the midframe off.

### Step 4 — Fingerprint Sensor



- Using tweezers, flip the brown tab securing the ribbon cable.

⚠ Make sure to only lift the flap and not the connector socket due to its susceptibility to break off.

## Step 5



- Using the tweezers, grab the ribbon cable and pull it out from its connector.
- Remove the fingerprint sensor from its socket on the motherboard.
- ☑ When re-installing the fingerprint sensor, make sure to align the ribbon cable with the plastic socket on the motherboard.

To reassemble your device, follow these instructions in reverse order.