



GATEWAY ML6720 Battery Replacement

Detailed steps on how to replace the laptop's battery.

Written By: Nathan Da Silva



Step 1 — Battery



- Flip the laptop on to the backside.

Step 2



- Locate the battery at the very top on the backside of the laptop.

Step 3



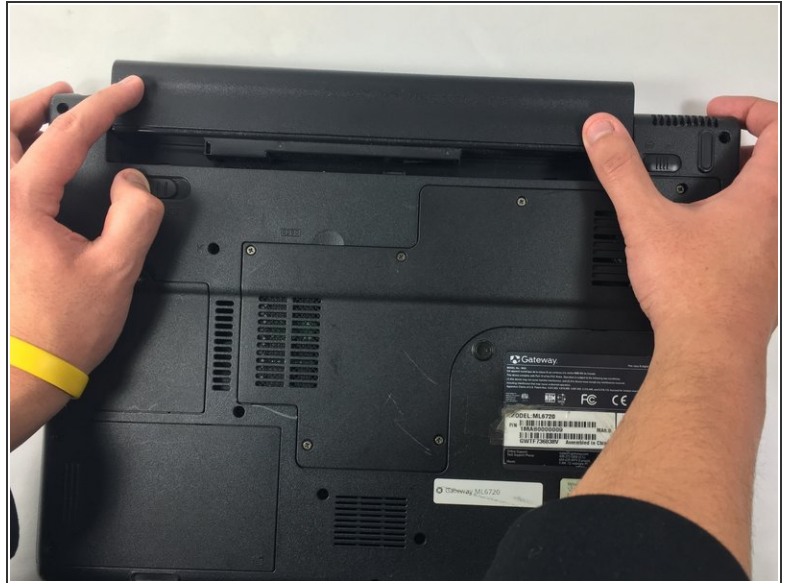
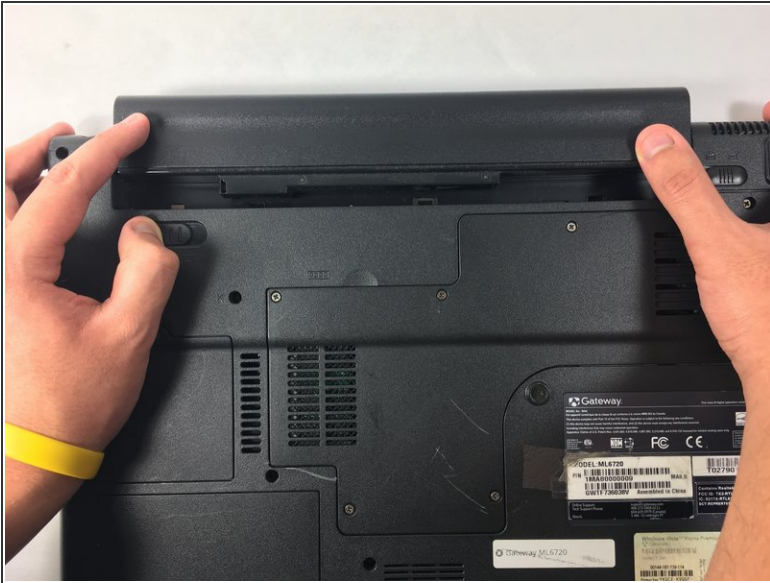
- Slide the latch in the top right corner to the right, to set it to unlocked.

Step 4



- Hold the other latch in the top left corner to the left.
- hold it in that place with your thumb until the completion of the next step. (This step unlocks the second latch.)

Step 5



- With both latches unlocked you can now slide out the battery, by pushing it off the top.

To reassemble your device, follow these instructions in reverse order.