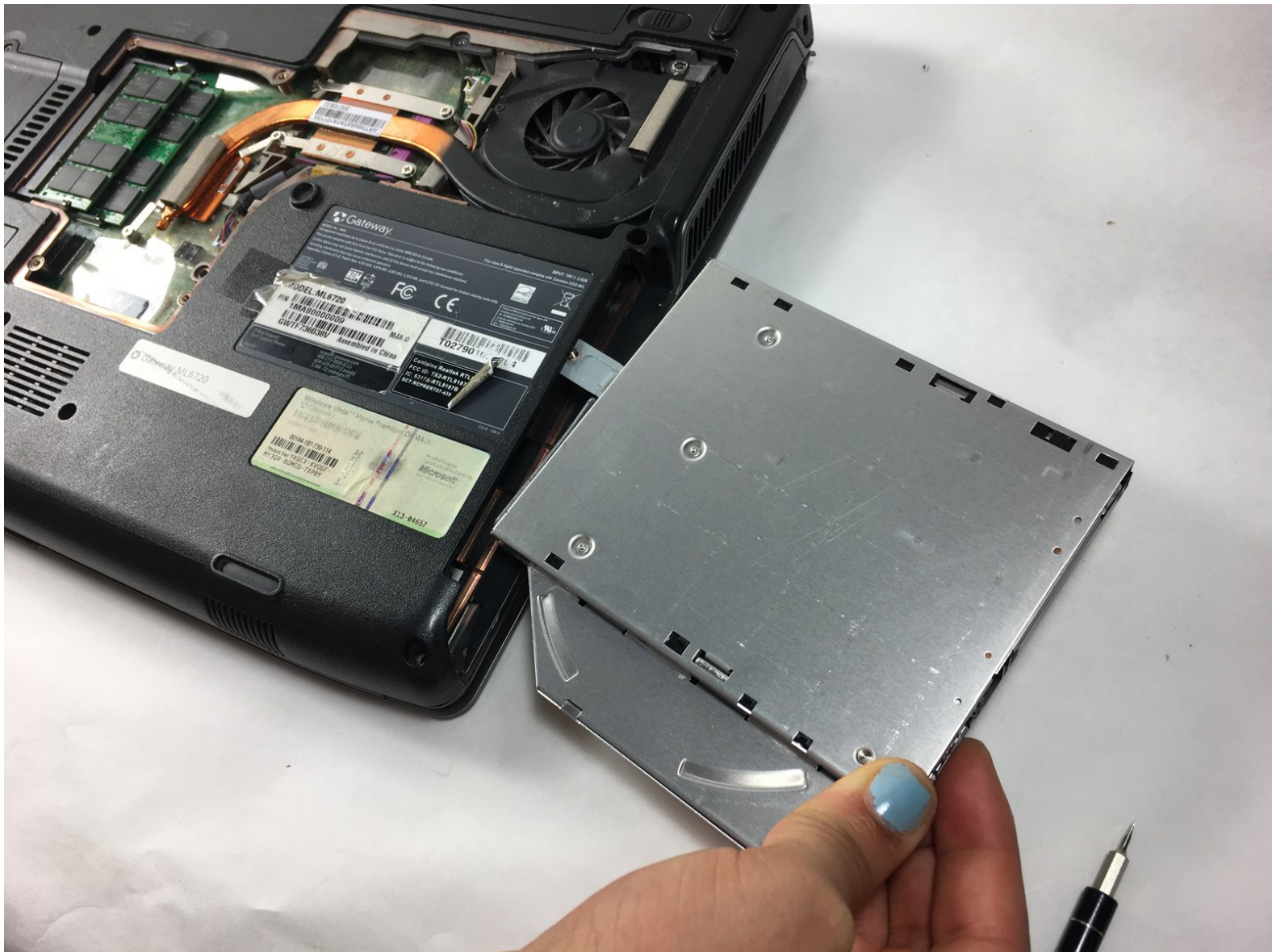




GATEWAY ML6720 Disc Drive Replacement

GATEWAY ML6720 Disc Drive Replacement

Written By: Semirah Dolan



INTRODUCTION

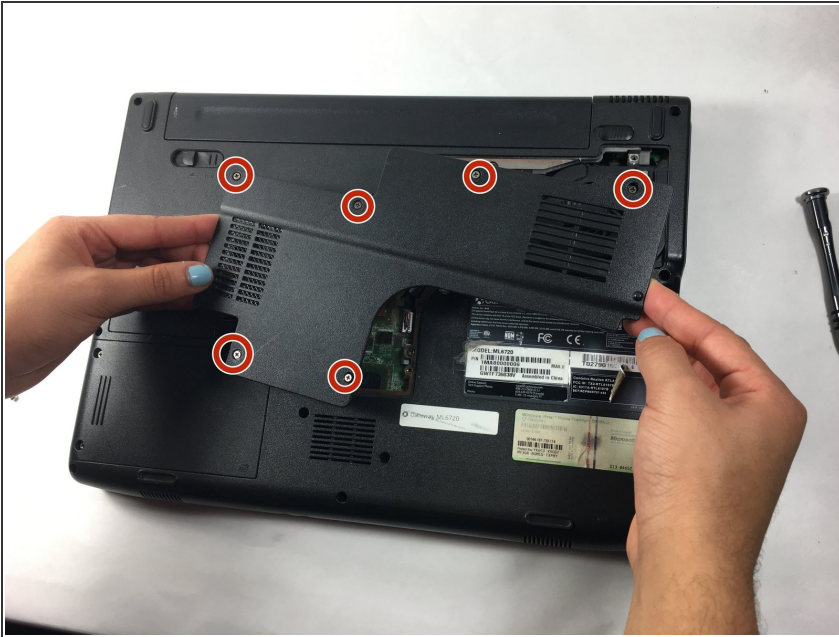
This guide shows how to take out and replace the disc drive of the GATEWAY ML6720



TOOLS:

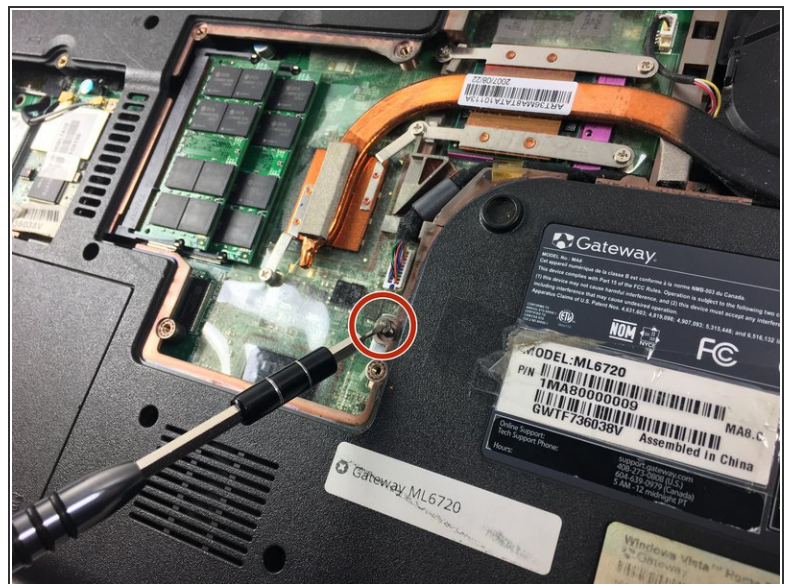
- [Phillips #0 Screwdriver](#) (1)
-

Step 1 — Disc Drive



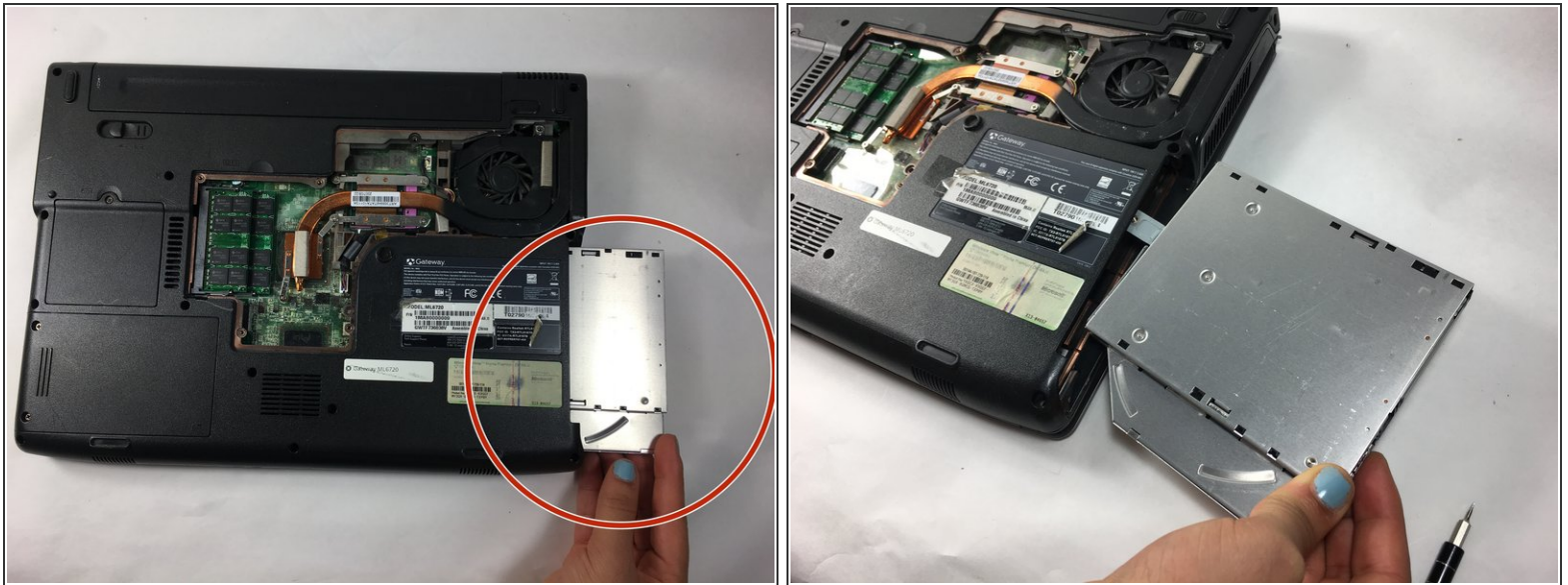
- Remove the six screws with the Phillips #0 Screwdriver that secures the middle large piece of the back panel.

Step 2



- Check to see if your laptop requires a screw(s) to be removed for the disc drive. Remove the screw (s) holding the disc drive down.

Step 3



- With that screw removed, you can now pull the disc drive out of the laptop by pulling on it in the direction that it slides.

To reassemble your device, follow these instructions in reverse order.