



GATEWAY ML6720 Keyboard Replacement

Detailed steps on to disassemble the laptop's keyboard.

Written By: Nathan Da Silva





TOOLS:

- [Phillips #00 Screwdriver](#) (1)
-

Step 1 — Battery



- Flip the laptop on to the backside.

Step 2



- Locate the battery at the very top on the backside of the laptop.

Step 3



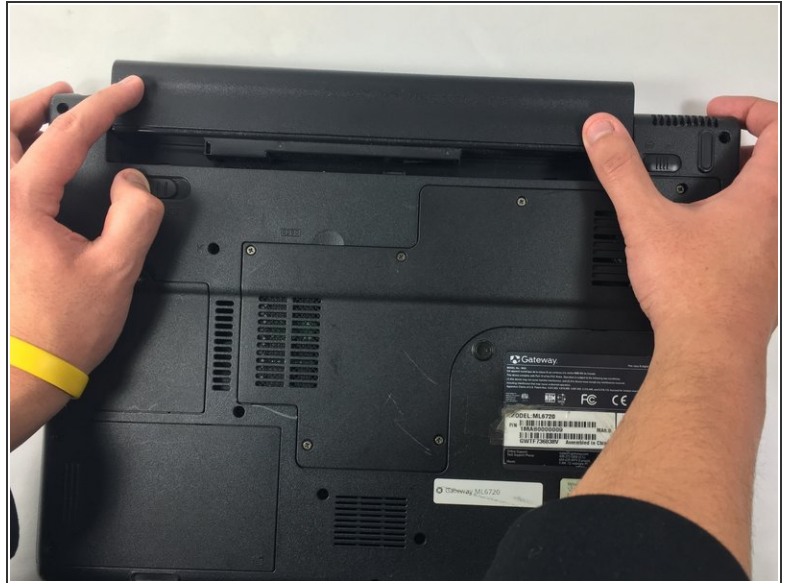
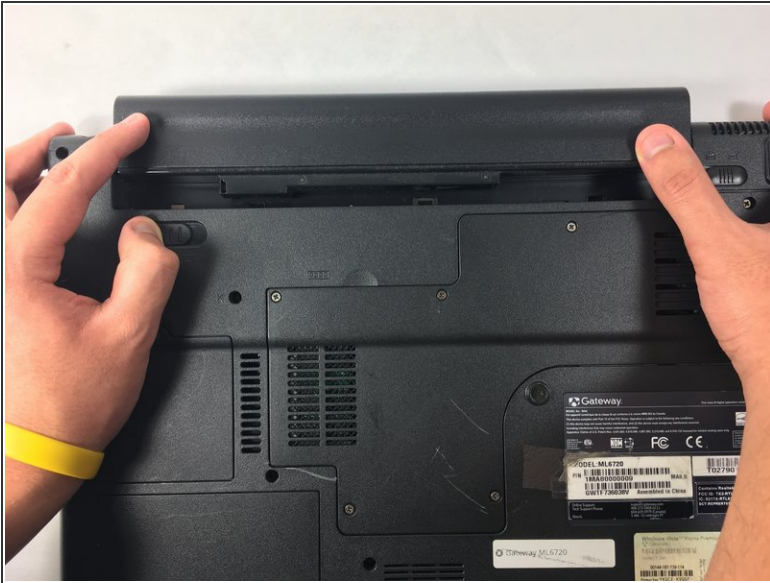
- Slide the latch in the top right corner to the right, to set it to unlocked.

Step 4



- Hold the other latch in the top left corner to the left.
- hold it in that place with your thumb until the completion of the next step. (This step unlocks the second latch.)

Step 5



- With both latches unlocked you can now slide out the battery, by pushing it off the top.

Step 6 — Keyboard



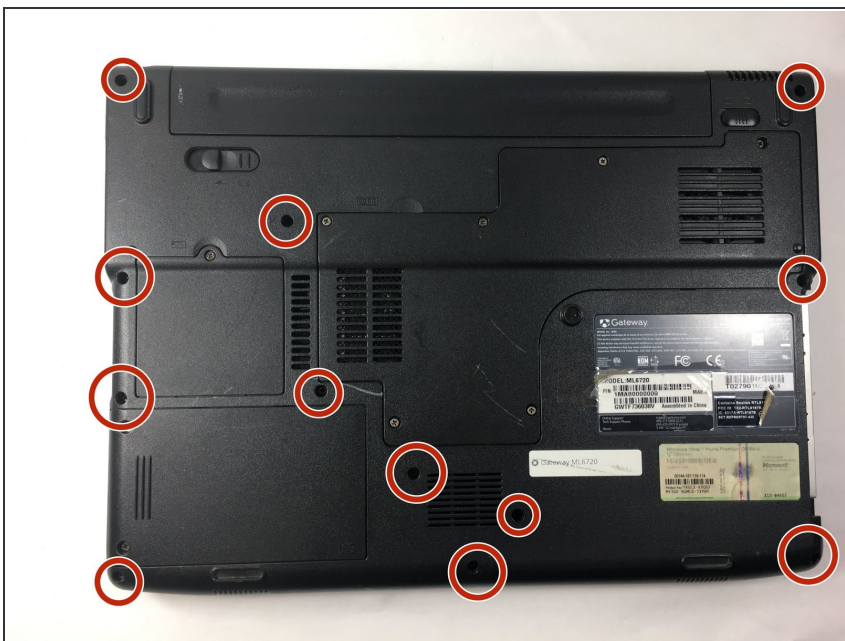
- Turn the laptop on its backside with the stickers and barcode facing you.

Step 7



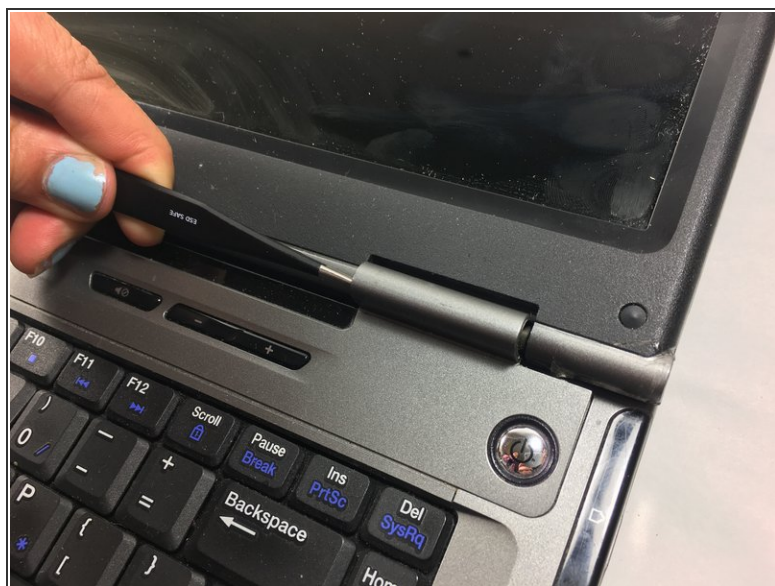
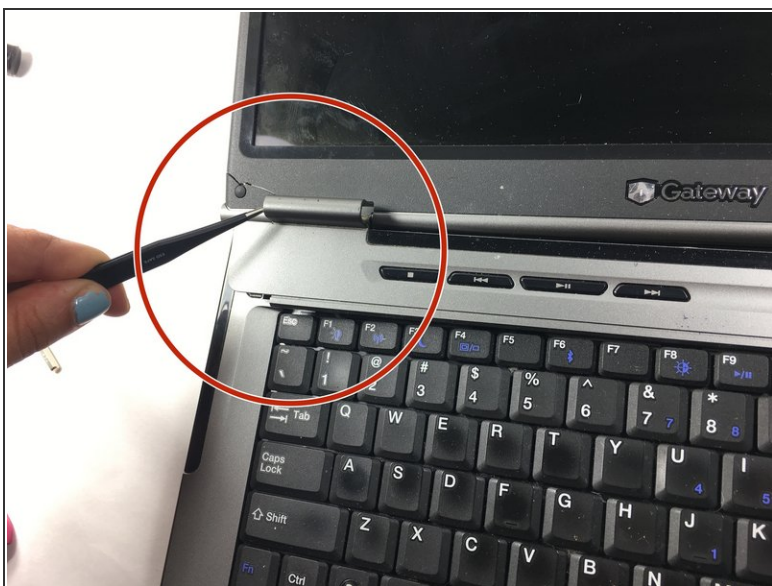
- Remove the six 2.0mm Phillips screws and panels from the back of the RAM, motherboard, and laptop fan.

Step 8



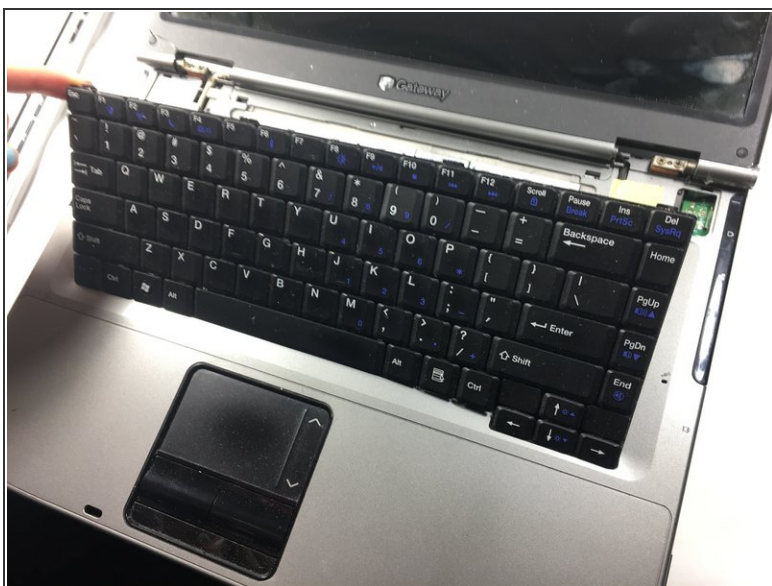
- Remove the twelve identical 2.0mm Phillips Screws located around the back of the laptop using the Phillips #0 Screwdriver.
- Remove the entire back panel of the laptop

Step 9



- Using a pair of tweezers or the tip of your screw driver, dig into the laptop cover and apply force to pop it out.
- Do this on the right and left sides of the cover

Step 10



- Pull up the keyboard with your finger

To reassemble your device, follow these instructions in reverse order.