



# GATEWAY NE56R09u Wireless Card Replacement

This replacement guide will give you a better understanding and demonstration on how to properly replace a wireless card on Gateway NE56R09u.

Written By: Luis Cardoso



This document was generated on 2019-10-24 02:42:27 AM (MST).

---

## INTRODUCTION

The wireless card is a key factor for your everyday laptop use. This wireless card is refereed to as a NIC or Network Interface Card it is square in shape, and is located in the middle section in the back of the laptop where the memory cards and hard drive both are. Also, before attempting to do a replacement, make sure your device is powered off and make sure to read through the guide first before jumping straight into a repair. Safety is always first!

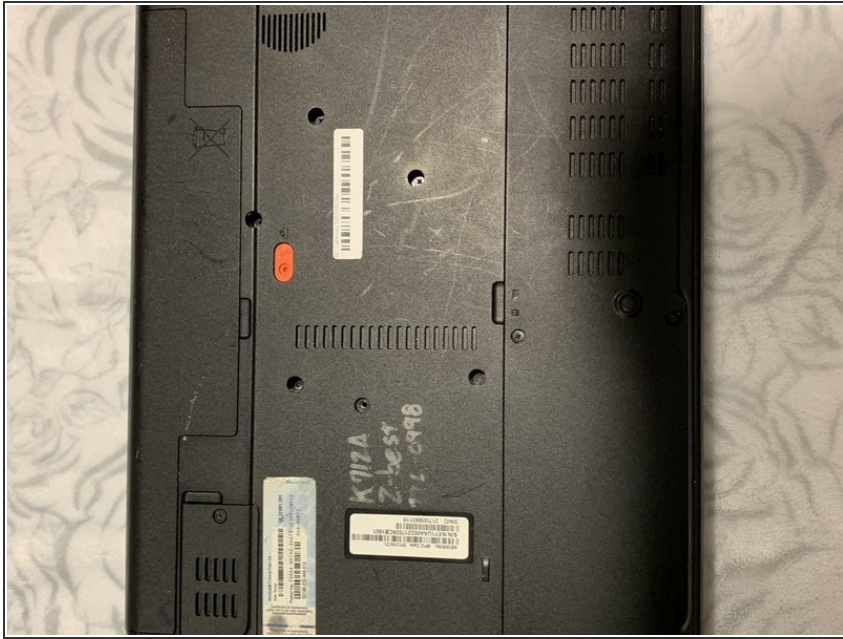


### TOOLS:

- [Spudger](#) (1)
  - [Phillips #1 Screwdriver](#) (1)
-

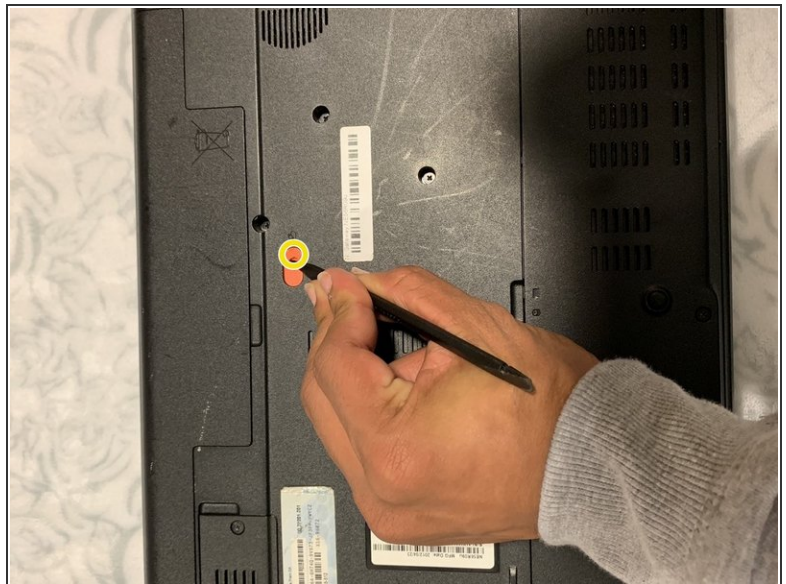


## Step 1 — Faulty Battery



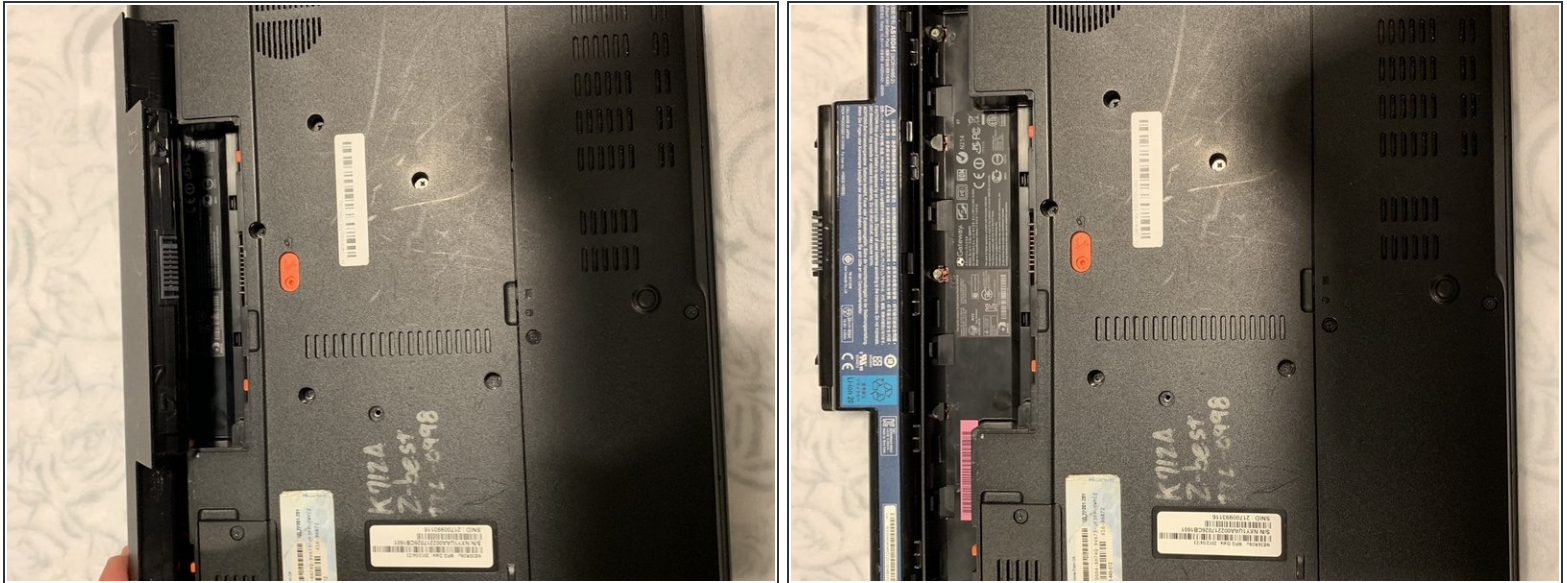
- Before doing anything, first make sure the laptop is turned off and flipped over. In this position your laptops bottom side should be facing up.

## Step 2



- With a plastic spudger or your fingers, push down on the battery clip, while simultaneously moving the spudger to the right to release battery.

### Step 3



- Remove the battery by detaching it from the laptop casing. Once removed, set the battery aside and insert the new battery.

### Step 4 — Wireless card



- Next, using the PH1 head from the tool kit and the adjustable screwdriver, remove the 2 M3x5.0mm screws on the casing to get to the wireless card.



## Step 5



- Once the cover is off, locate the wireless card.

## Step 6



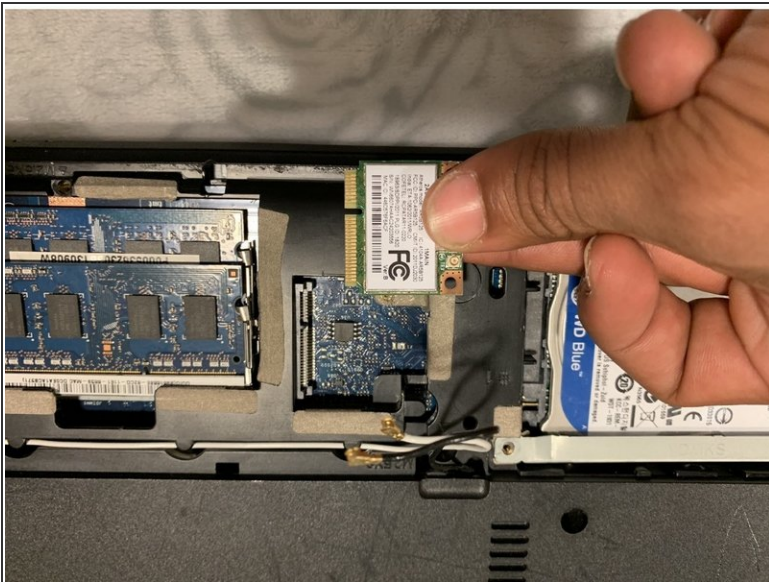
- When located, remove the black and white cables from the wireless card. These are the ground and power cables.

## Step 7



- Using the PH1 head from the tool kit and the adjustable screwdriver, remove the M3x5.0mm screw with that is keeping the wireless card intact.

## Step 8



- Remove the wireless card from the laptop

To reassemble your device, please follow these instructions in reverse order.