



# GATEWAY NE56R09u Battery Replacement

How to replace a faulty battery in a Gateway NE56R09u.

Written By: joshua depina



---

## INTRODUCTION

Use this guide to replace a faulty battery.



### TOOLS:

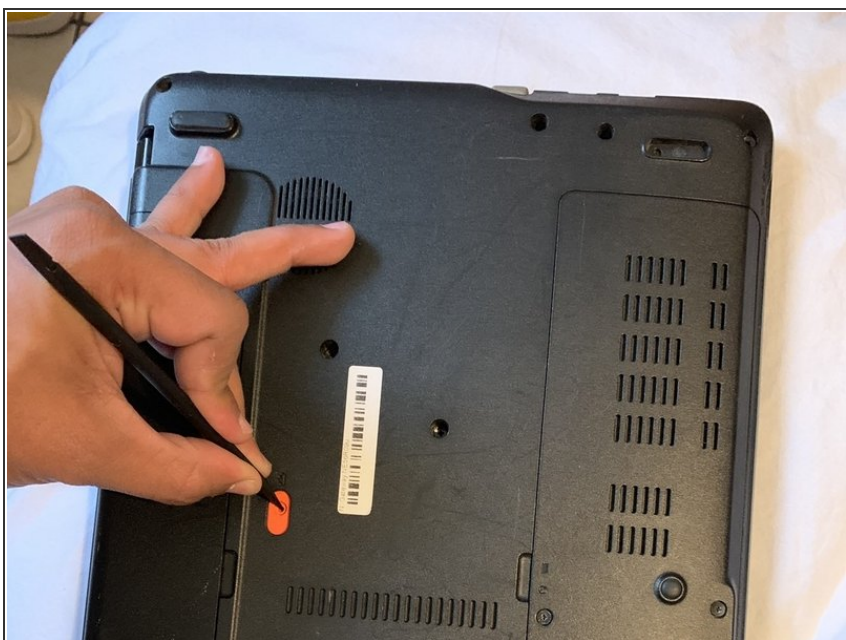
- [Spudger](#) (1)
-

## Step 1 — Battery



- Before doing anything, first make sure the laptop is turned off and flipped over. In this position your laptop's bottom side should be facing up.

## Step 2



- Using a nylon spudger or your fingers, push down on the battery clip to release the battery.

## Step 3



- Finally, remove the battery by detaching it from the laptop casing. Once removed, set the battery aside and insert the new battery.

To insert the new battery, follow these instructions in reverse order.