



# GATEWAY NE56R09u Memory Cards Replacement

This replacement guide will give you a better understanding and demonstration on how to properly replace a memory cards on a Gateway NE56R09u.

Written By: joshua depina



This document was generated on 2020-01-21 03:44:19 PM (MST).

---

## INTRODUCTION

The purpose of the memory cards are for quick memory slots, this model specifically has two memory cards that are blue in color. Before attempting to do a replacement, make sure your device is powered off and make sure to read through the guide first before jumping straight into a repair. Safety is always first!



### TOOLS:

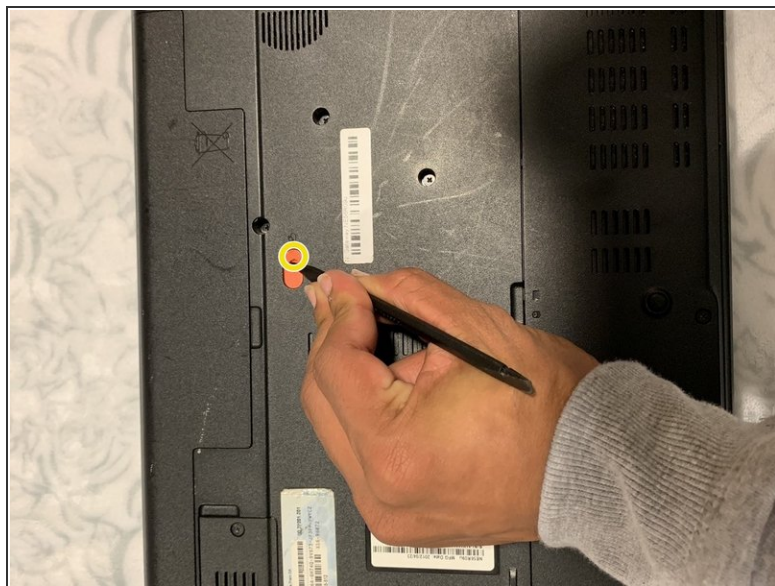
- [Spudger](#) (1)
  - [Phillips #1 Screwdriver](#) (1)
-

## Step 1 — Faulty Battery



- Before doing anything, first make sure the laptop is turned off and flipped over. In this position your laptops bottom side should be facing up.

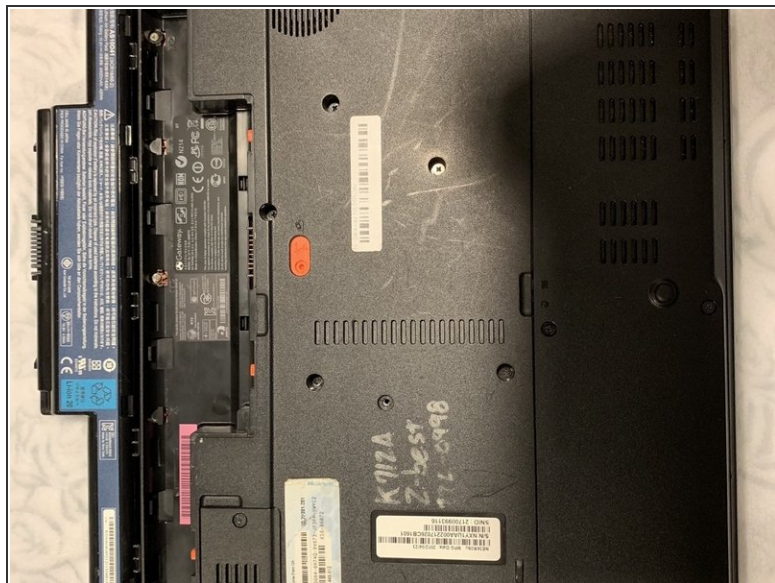
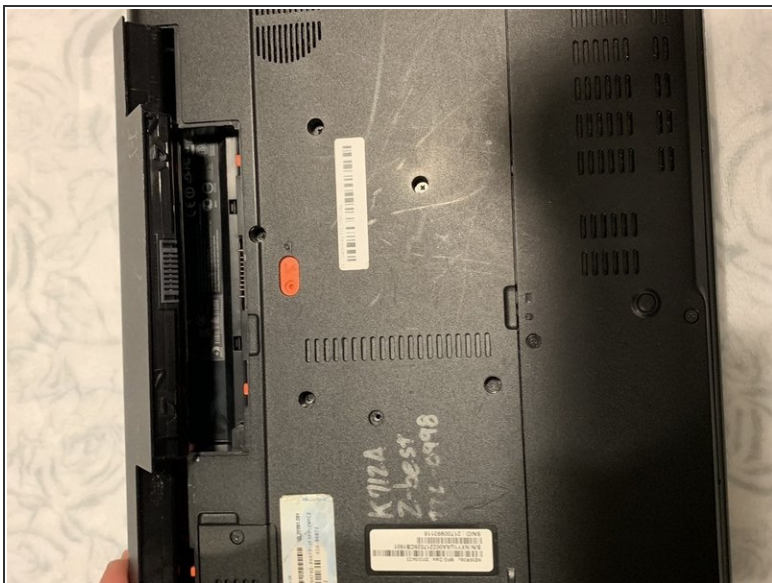
## Step 2



- With a plastic spudger or your fingers, push down on the battery clip, while simultaneously moving the spudger to the right to release battery.



### Step 3



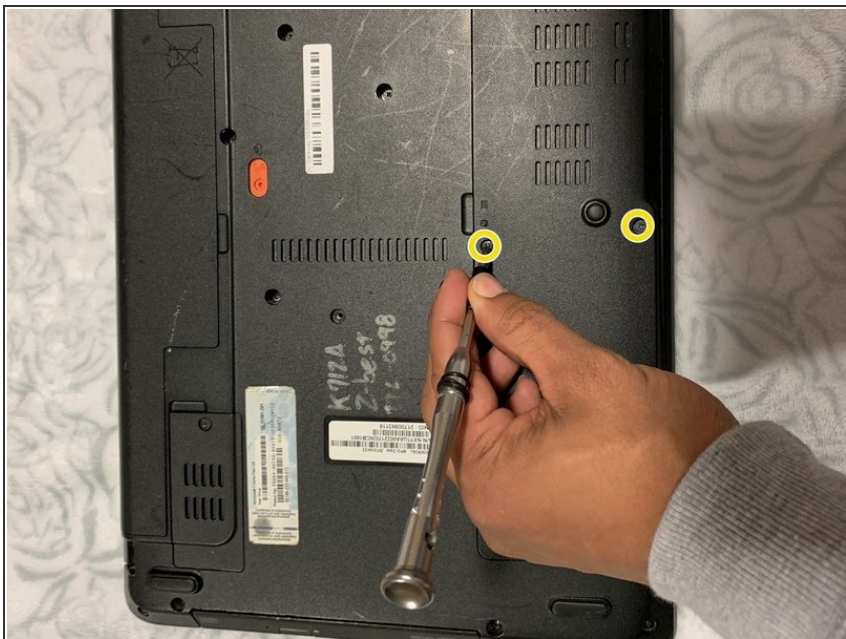
- Remove the battery by detaching it from the laptop casing. Once removed, set the battery aside and insert the new battery.

### Step 4 — Memory Cards



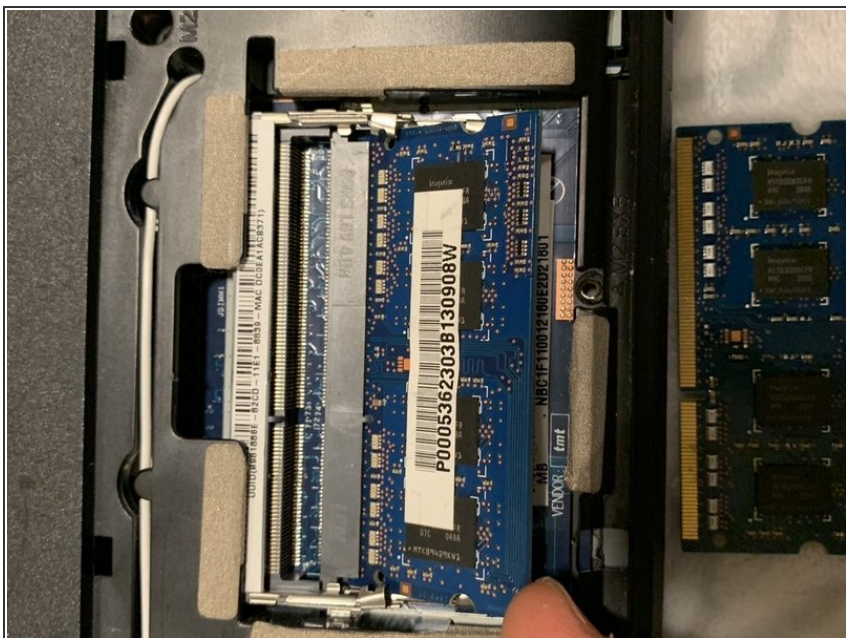
- Locate the casing that protects the memory cards, wireless card, and hard drive.

## Step 5



- With the PH1 head from the tool kit and the adjustable screwdriver, remove the 2 M3x5.0mm screws on the casing to get to the memory cards.

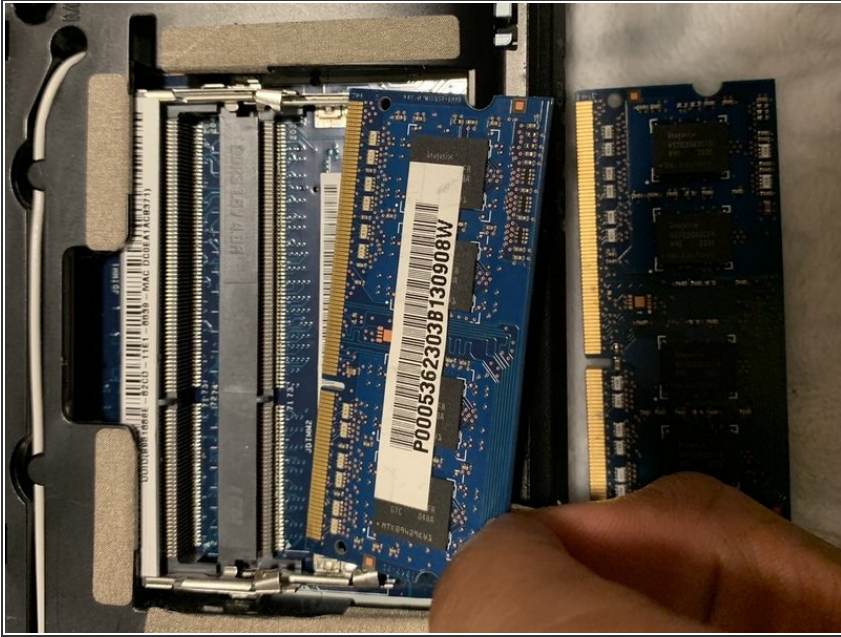
## Step 6



- On each memory card there are two silver latches holding them in place
- Release the latches to be able to remove the memory cards.



## Step 7



- Remove the memory cards from their respected slots.

To reassemble your device, please follow these instructions in reverse order.