



GBC Creative Laminator Gear Replacement

In this replacement guide, we will discuss how to replace the gear if it doesn't work.

Written By: Yujia Tang



INTRODUCTION

If your Laminator does not work currently, for example the paper stuck in the device, one thing to do is to check the gears. Since the gears are inside of the device, you need to disassemble the Laminator. For this guide, you will need to open the top of the device using a Phillips #2 screwdriver to remove the screws. It is not difficult to replace the gears, but some of the components may be difficult to pull apart.



TOOLS:

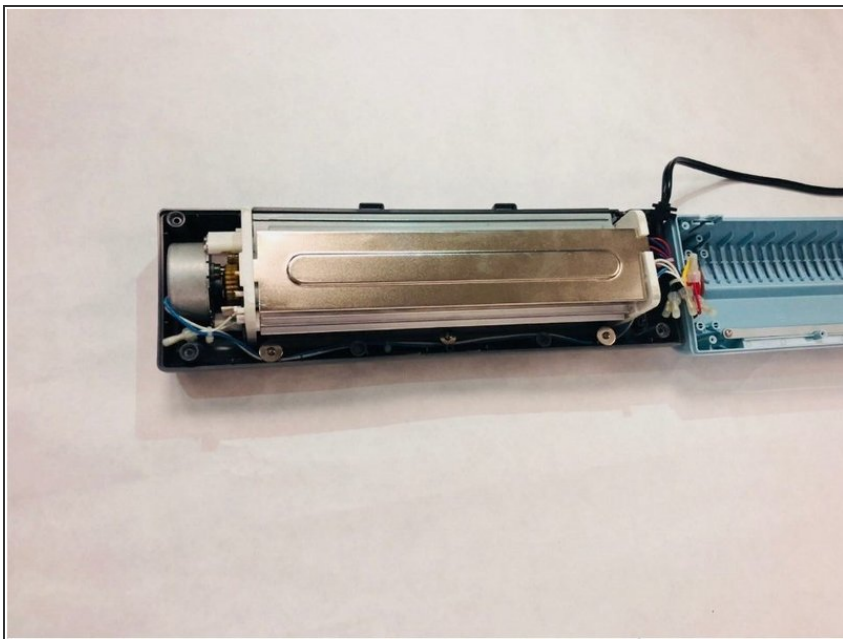
- [Phillips #2 Screwdriver](#) (1)
-

Step 1 — Gear



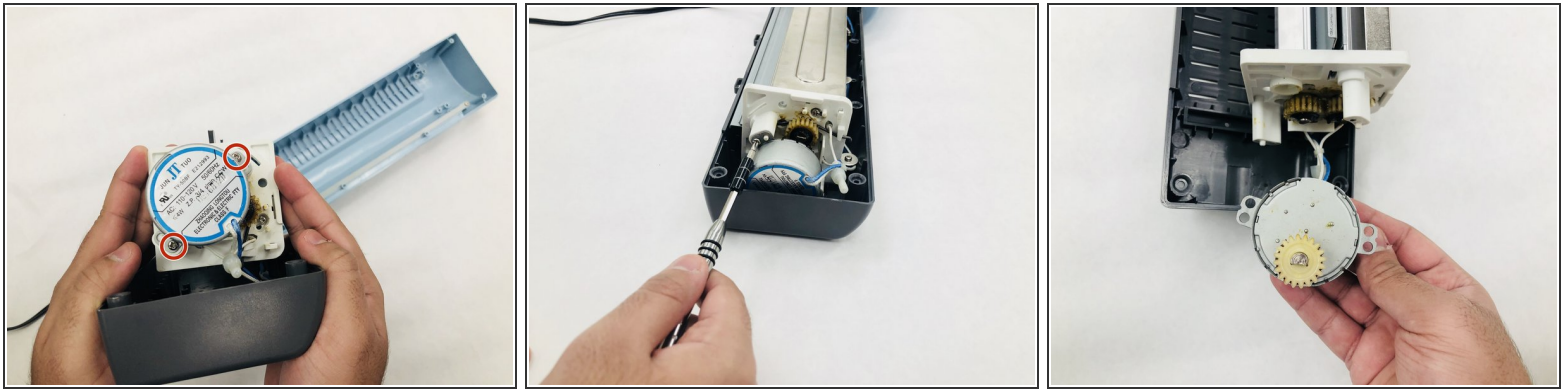
- Using the Phillips #2 screwdriver, remove ten 12 mm long screws on the bottom of the device.

Step 2



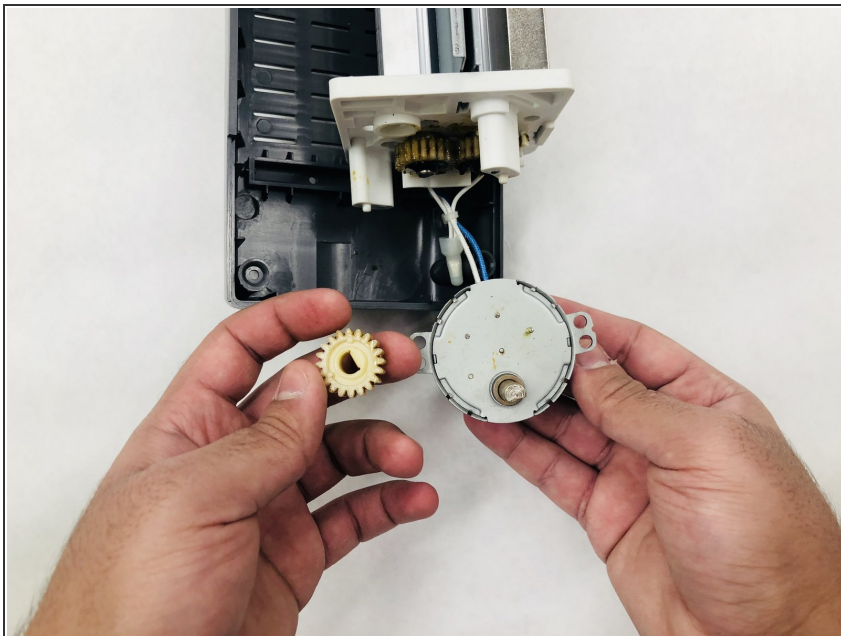
- Open the top of the device, and the inside of the Laminator will be exposed as shown.

Step 3



- Using the Phillips #2 screwdriver, remove the two 9 mm long screws on the side of the main component that fix the motor in place.
- Pull the motor off of the main internal component to reveal the gear.

Step 4



- Pull the gear off of the motor.

To reassemble your device, follow these instructions in reverse order.