



GE 29875GE1 Speaker Replacement

This guide will tell you how to change the speaker of the GE29875ge1 device.

Written By: Antonio Monteiro





TOOLS:

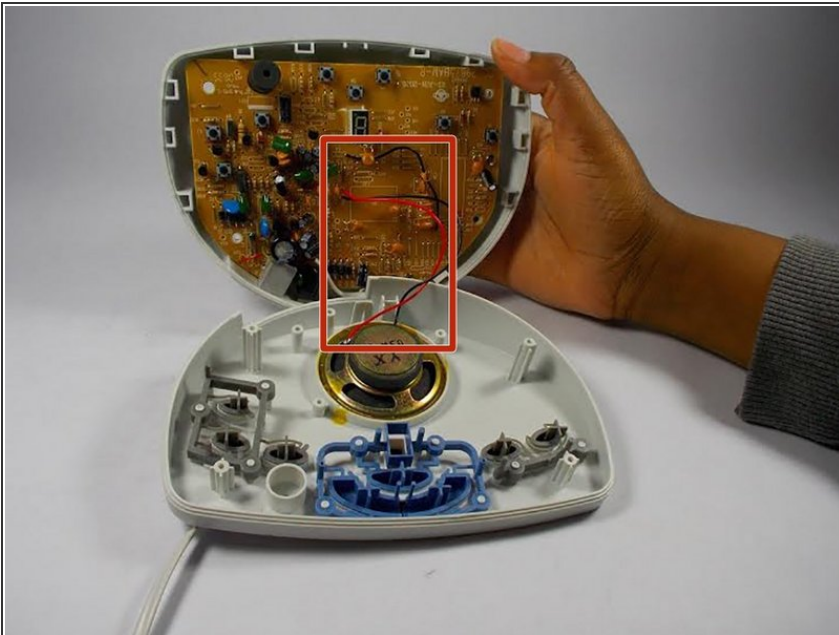
- [Phillips #2 Screwdriver](#) (1)
- [iFixit Opening Tools](#) (1)
- [Soldering Workstation](#) (1)

Step 1 — Remove the Screws on Outer Back Casing.



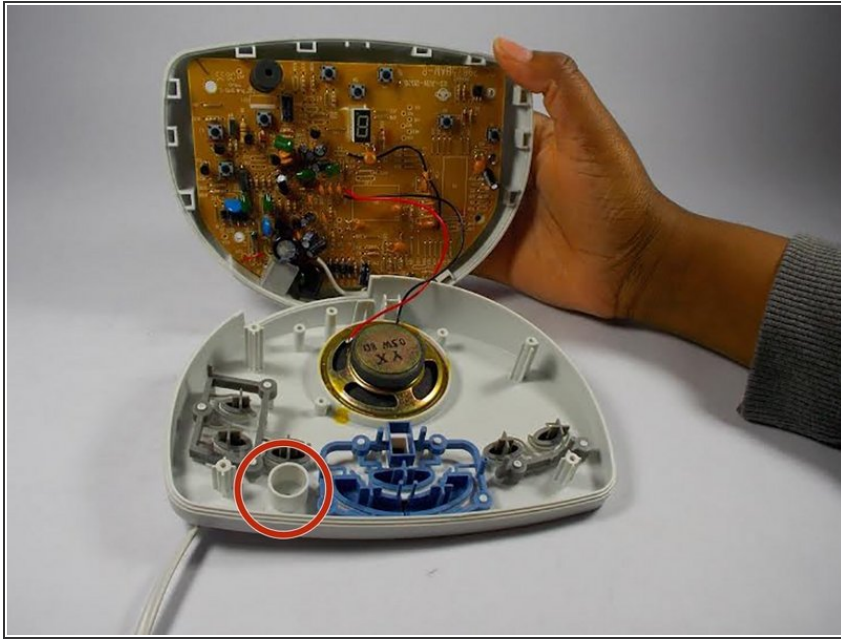
- Remove the 4 small foam piece on the back casing of the device using a metal tweezers. After remove the 4 screws under the foam piece using a Phillips screwdriver (#size)

Step 2 — Separate the front from the back case.



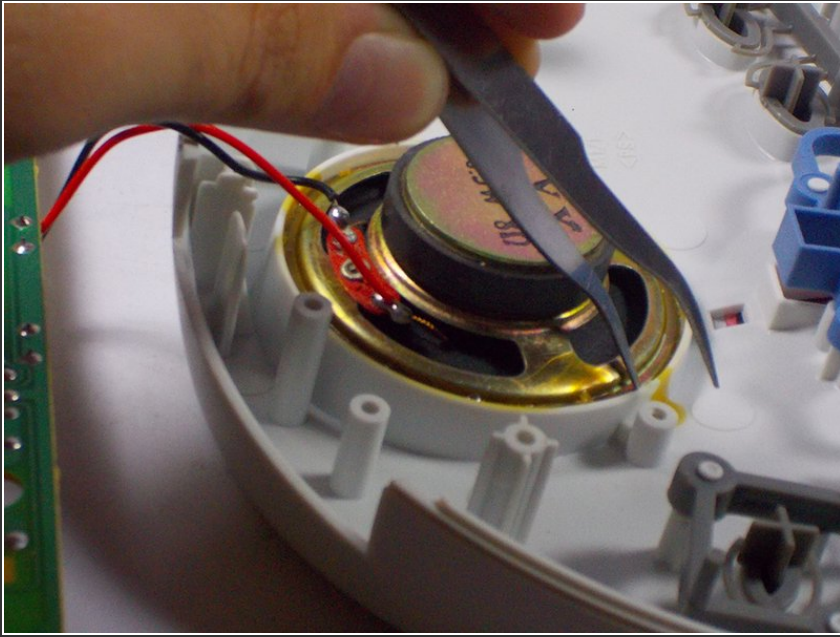
- Carefully separate the device's front outer casing from the back outer casing.
- ⓘ The device's front and back outer casing might be hard to separate sometimes. To separate them without damaging other parts use a plastic opening tool to separate the front and back casing.
- ⚠ Be careful not to damage the cable on the speaker and microphone while pulling the back outer casing away from the front casing.

Step 3 — Pull the Microphone Piece Out.




- The microphone will still be on the front casing while connected on the main board on the back casing. Softly using your finger pull the microphone out of the casing.
- ⓘ The speaker cable will be connected on the back casing, while glued on the front casing, so carefully put them next to each other so you won't cut the wires.

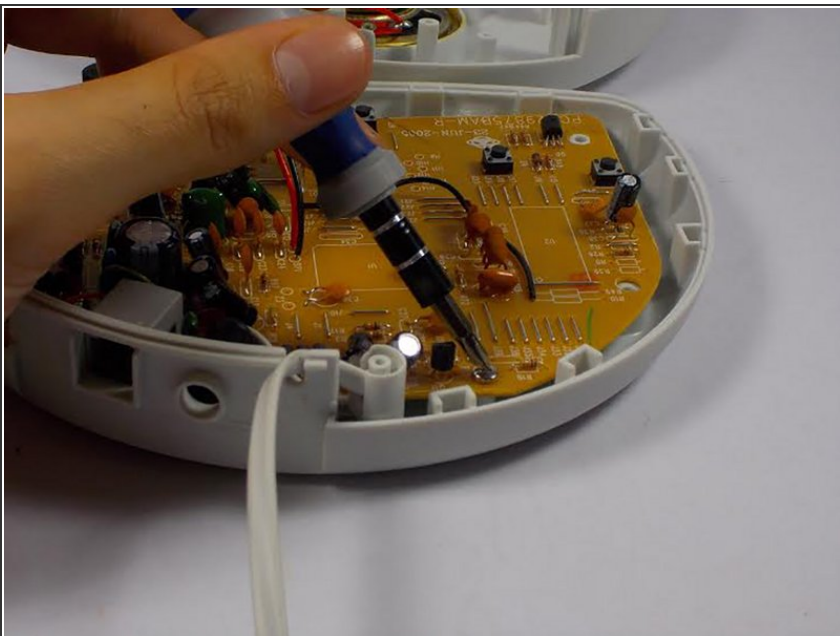
Step 4 — Remove Speaker From the Casing.



- The speaker will be glued to the front casing. To remove the glue use a metal spudger or use a heat gun to heat the glue and remove the speaker.

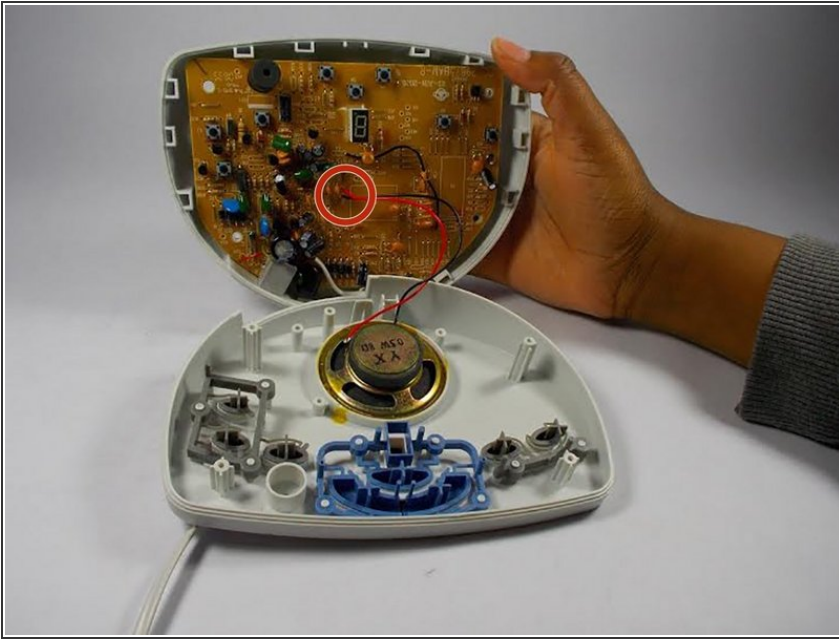
 Be Careful while using the metal spudger, so you won't damage the speaker housing.

Step 5 — Main Board Removal.



- Remove the 3 screw that holds the main board to the back casing using Phillips head #2 screwdriver.
- After lift the main board from the back outer casing using a plastic opener tool.

Step 6 — Wire and Soldering.



- The Speaker is connected of the main board of the device with two color coded wires.
- Before Taking apart the speaker you must take out the soldering wire on back of the main board. After removing it you can install the new speakers.
- ⓘ information sign - The red wire is positive and the black wire is negative they must be soldered in the same position they were on the old speakers.

To reassemble your device, follow these instructions in reverse order.