



GIGABYTE 15.6" P55Wv6-NE2 Disassembly

Picked up this laptop on black friday and had to take a look inside!

Written By: Justin Koch



INTRODUCTION

This is a basic disassembly guide and parts overview of the GIGABYTE 15.6" P55Wv6-NE2. Mine shipped with a 128GB Lite-On M.2 2280 SSD and a no-name 1TB HHD. The laptop does support NVME M.2 SSDs. It came with 1-16GB SODIMM by Crucial leaving room to expand upto the supported 32GB. I plan on adding an additional 16gb of ram, replace the M.2 SSD with a Samsung 960 Evo 250GB NVME SSD and a 1TB Samsung 850 2.5" SSD.

<http://www.gigabyte.us/products/product-...>



TOOLS:

- [Phillips #00 Screwdriver](#) (1)
- [Essential Electronics Toolkit](#) (1)



PARTS:

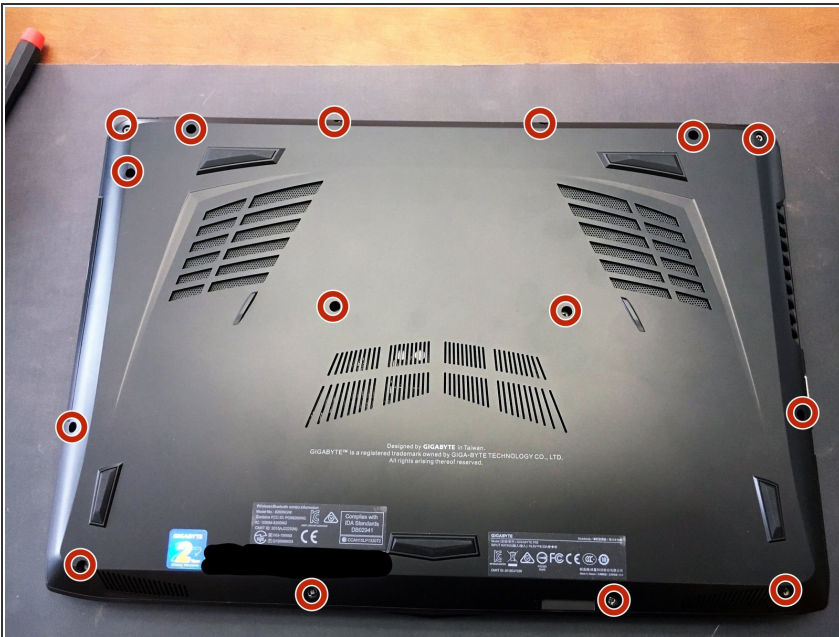
- [Crucial CT16G4SFD824A](#) (2)
DDR4 SODIMM
- [Samsung 960 M.2 250GB NVME SSD](#) (1)
M.2 2280 NVME SSD
1 M.2 2280 SSD Slot
- [Samsung 850 Evo 1TB SSD](#) (1)
2.5" SSD
1- 2.5" HHD or SSD Slot

Step 1 — Overview



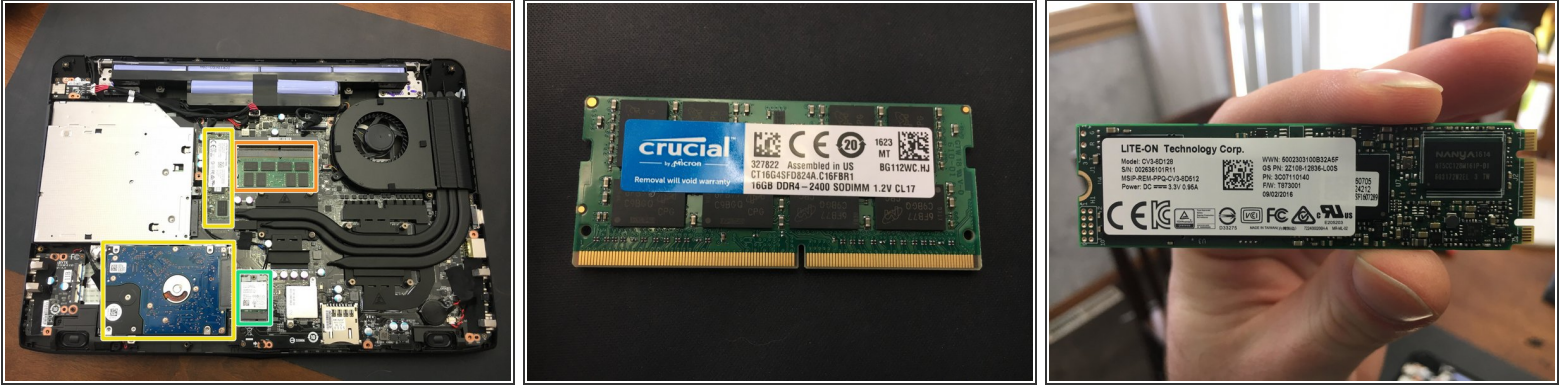
- As with all electronics, ensure that you are in a static free environment, and the computer is turned off.

Step 2



- Use a PH00 to remove the 15 Screws holding in the bottom cover. There are no large clips holding in the back cover, so gentle pressure should release it.

Step 3



- There are 2 SODIMM Slots, Mine came with 16GB of Crucial Memory.
- The M.2 2280 SSD that mine came with was a Lite-On. The 2.5" 1TB HDD was nondescript.
- The wifi chip is an Intel 8260NGW

To reassemble your device, follow these instructions in reverse order.