



Gaems g155 LCD Screen Disassembly

In this guide I will show you how to Dissassemble the Gaems g155 Personal Gaming Enviroment

Written By: ashttoast



INTRODUCTION

Tools:

[P#1 Screwdriver](#)

[T6 Screwdriver](#)

[T10 Screwdriver](#)

[Plastic Spudger](#)

[\(Optional\) Metal Spudgers](#)



TOOLS:

- [Phillips #1 Screwdriver](#) (1)
 - [T6 Torx Screwdriver](#) (1)
 - [T10 Torx Screwdriver](#) (1)
 - [iFixit Opening Tools](#) (1)
 - [Metal Spudger](#) (1)
-

Step 1 — Gaems g155 LCD Screen Disassembly



- i** While the Gaems g155 takes gaming on the go, unfortunately so can the screen. Thankfully Gaems made it relatively easy to replace the screen.

Step 2



i The first step is to remove the front sticker/plastic cover. You need a spudger of some sort to take the clear cover sticker and bottom sticker off.

! Note: when you take both of the stickers off, you will most likely need to buy new stickers for the front. The clear one will no longer stick well, but the bottom one will still stick, but will have tool damage wherever you took it off (as you can see on the bottom left).

Step 3



- Remove the four T10 screws.
- Flip over the case and open it up.

Step 4



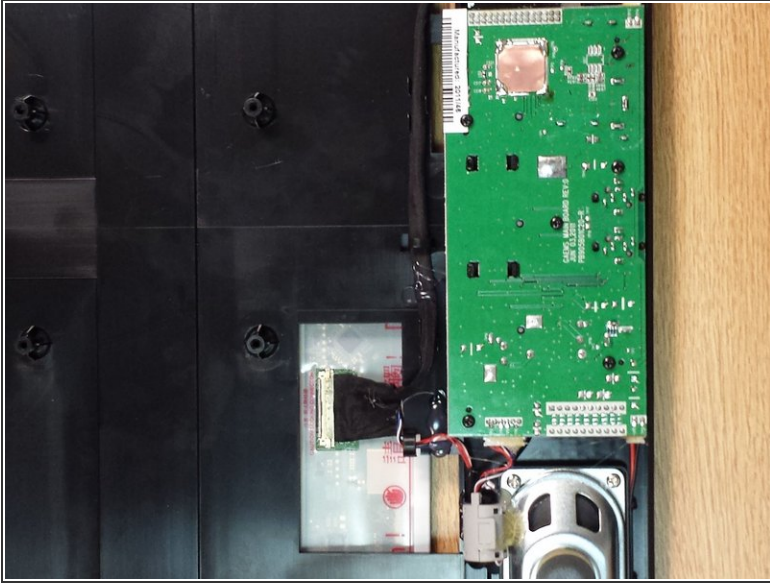
- Remove the plastic cover, using opening tools, and then simply pull the rest off using your fingers.

Step 5



- Remove all screws using your P#1 screwdriver. There are four large screws in the top and bottom, and the six smaller screws on the sides.
- Honestly, the toughest part of the replacement are these three clips on each side. I found that prying the top two first makes it a little more easy.
- After you get it unclipped, take out the screen assembly, and flip it over on its face.

Step 6



- Looking at the back, you can see the LCD cable, most likely you will have some hot glue on the back covering the cord.
- ⚠ Be extremely careful if you do have to peel off any glue, as too much force on the cable could break the connector.
- ⚠ After any glue is removed, simply unhook cable with a spudger. Be careful not to actually touch the connectors, as the oils on your fingers can potentially cause some problems down the road.

Step 7



- Lastly, remove the eight T6 screws from the left and right sides.
- There you have it, a fully disassembled Gaems g155 screen!

To reassemble your device, follow these instructions in reverse order.