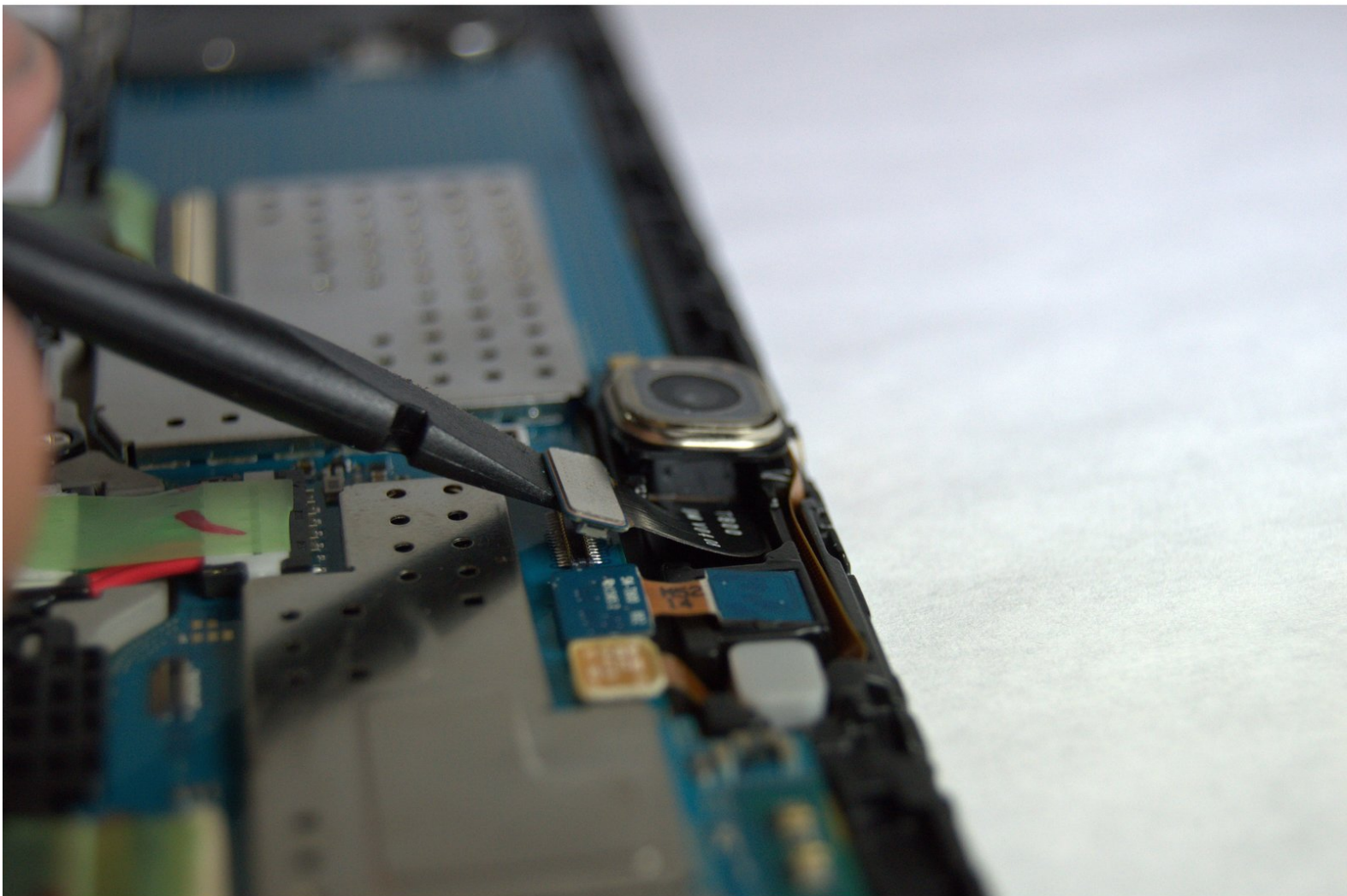




Galaxy Tab S 10.5 Camera Replacement

How to replace a faulty camera.

Written By: Jordan Soto



INTRODUCTION

This guide will give step by step instructions on how to remove and replace the camera in a Samsung Galaxy Tab S 10.5.



TOOLS:

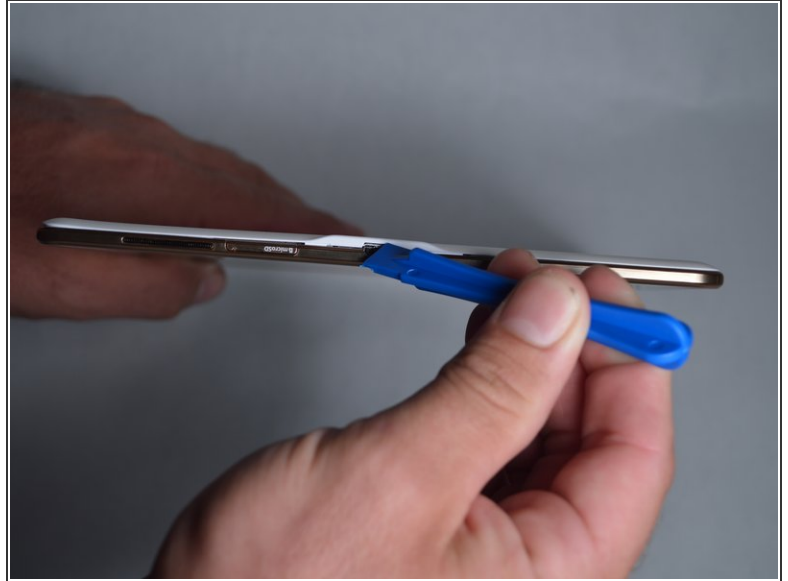
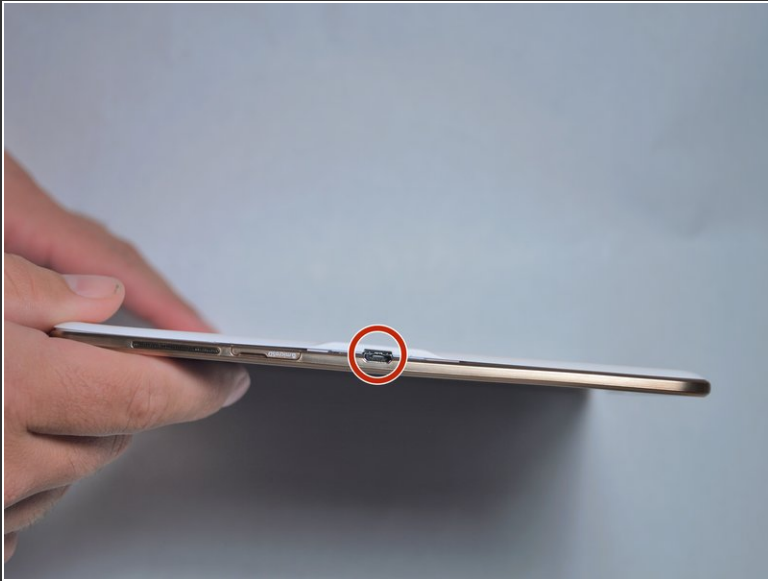
- [Spudger](#) (1)
- [iFixit Opening Tools](#) (1)



PARTS:

- [Galaxy Tab S 10.5 Rear Facing Camera](#) (1)
- [Galaxy Tab S 10.5 Front Facing Camera](#) (1)

Step 1 — Disassembling Galaxy Tab S 10.5 Back Cover



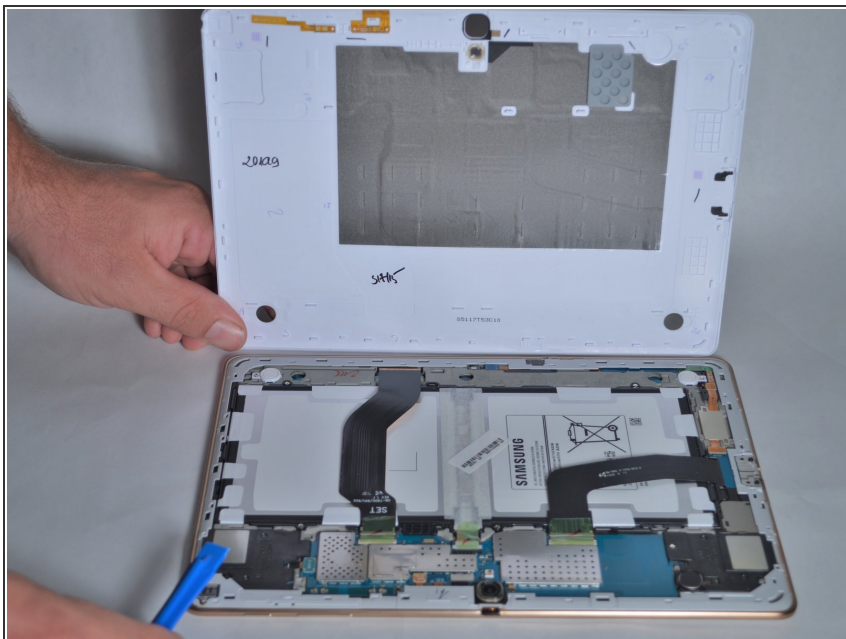
- Place the plastic opening tool into the SD card slot or charge port.
- Try in an upward motion until you see a separation between the tablet and back cover.

Step 2




- Work around the entire device by sliding the plastic opening tool around the rim.
- ⓘ If this is the first time, it will be hard to separate the back cover from the tablet.
- ⓘ The clips are approximately 5 cm apart. While working around the device, the clips will make a dislocating sound when disconnected.

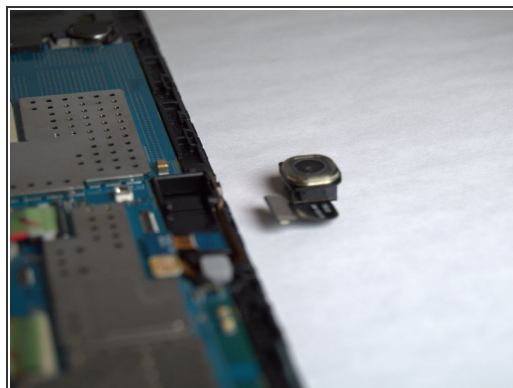
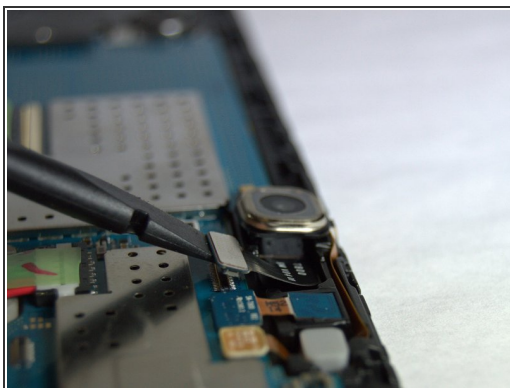
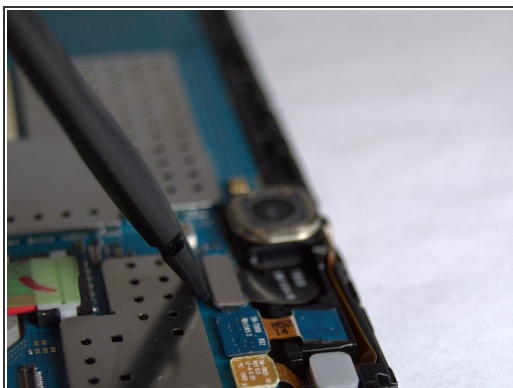
Step 3



- Remove the back cover once all links have been separated.

 Be careful when touching any of the internal components of the tablet.

Step 4 — Camera



- Use a spudger to disconnect the camera from the motherboard and then remove the camera.

To reassemble your device, follow these instructions in reverse order.