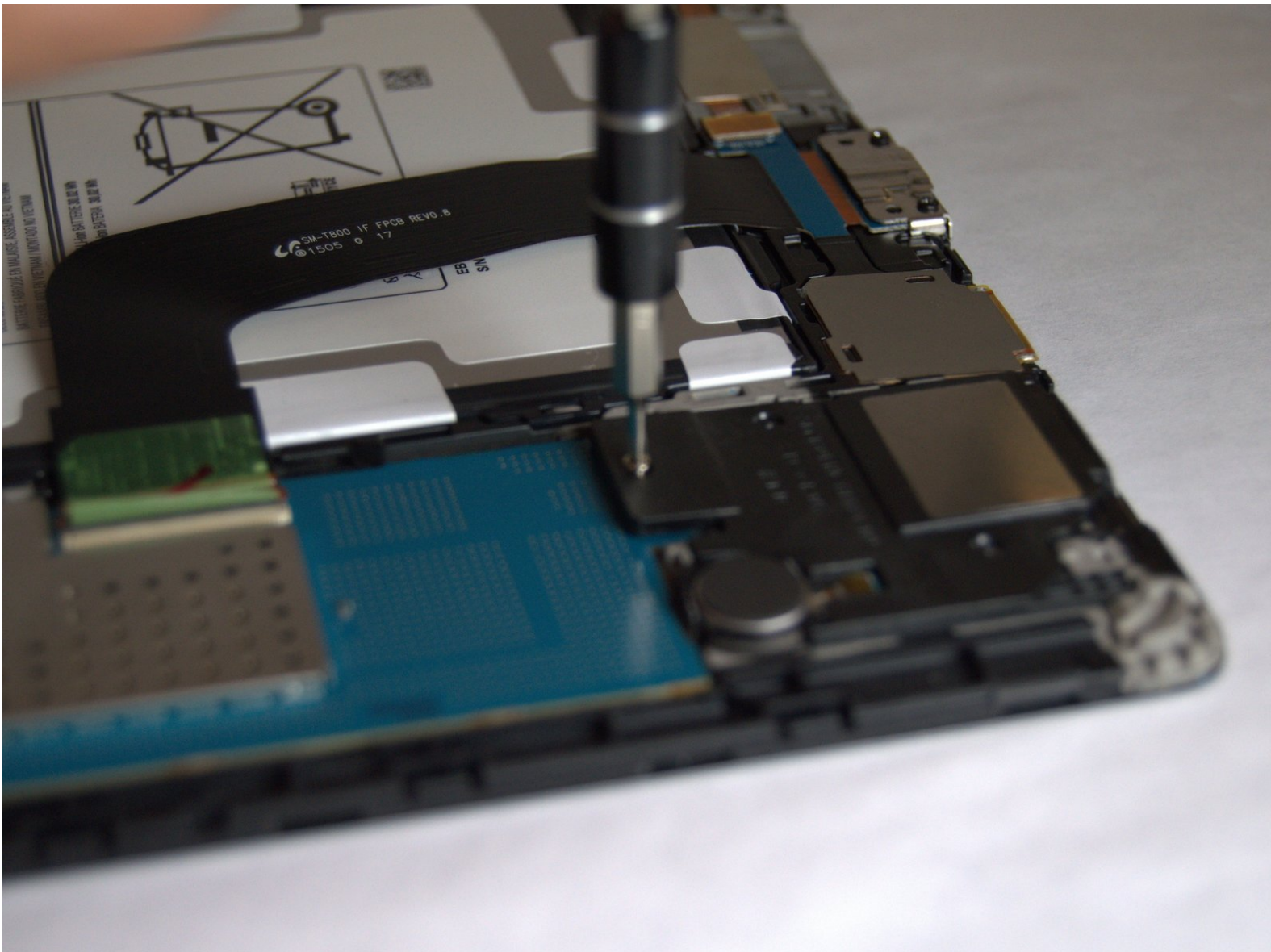




# Galaxy Tab S 10.5 Speakers Replacement

Speaker replacement guide for a Galaxy Tab S 10.5.

Written By: Jordan Soto



## INTRODUCTION

This guide will give step by step instructions on how to remove and replace both speakers in a Samsung Galaxy Tab S 10.5.



### TOOLS:

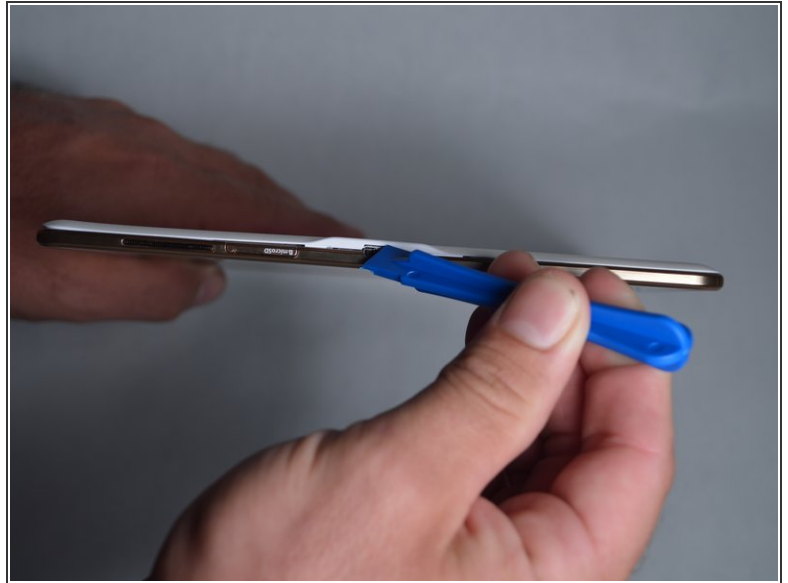
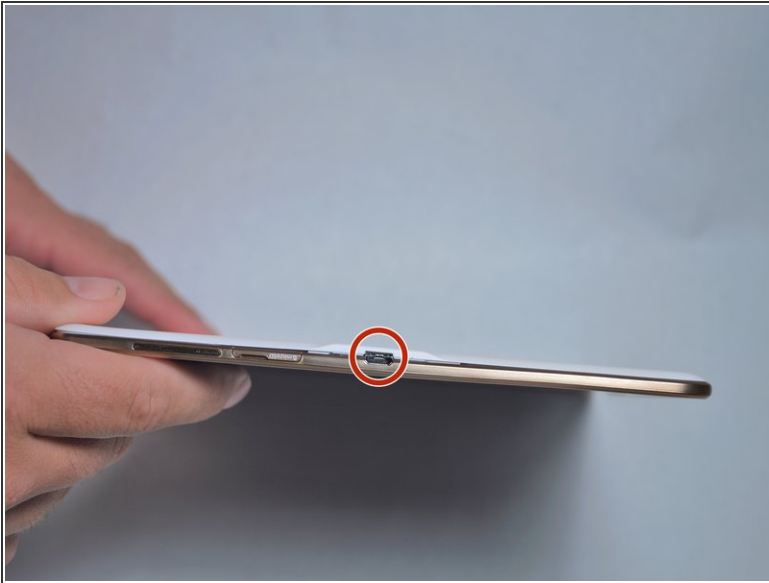
- [Tweezers](#) (1)
- [iFixit Opening Tools](#) (1)
- [Phillips #1 Screwdriver](#) (1)
- [Phillips #00 Screwdriver](#) (1)



### PARTS:

- [Galaxy Tab S 10.5 Right Speaker](#) (1)
- [Galaxy Tab S 10.5 Headphone Jack Assembly](#) (1)

## Step 1 — Disassembling Galaxy Tab S 10.5 Back Cover



- Place the plastic opening tool into the SD card slot or charge port.
- Try in an upward motion until you see a separation between the tablet and back cover.

## Step 2




- Work around the entire device by sliding the plastic opening tool around the rim.
- ⓘ If this is the first time, it will be hard to separate the back cover from the tablet.
- ⓘ The clips are approximately 5 cm apart. While working around the device, the clips will make a dislocating sound when disconnected.

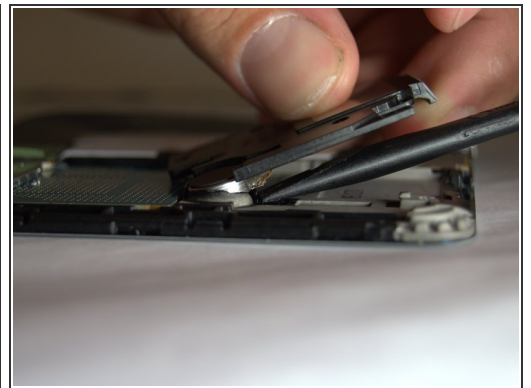
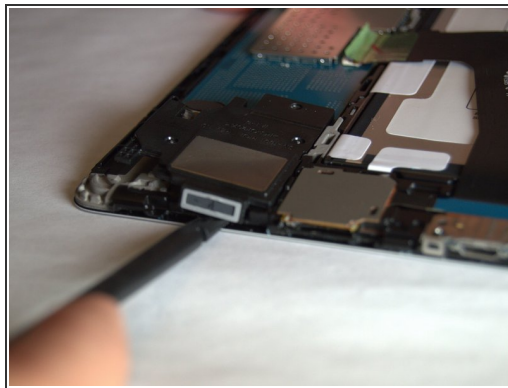
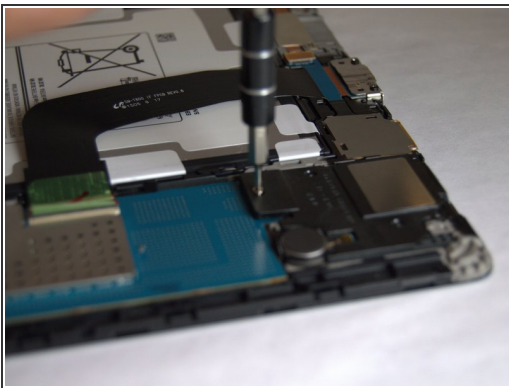
### Step 3



- Remove the back cover once all links have been separated.

 Be careful when touching any of the internal components of the tablet.

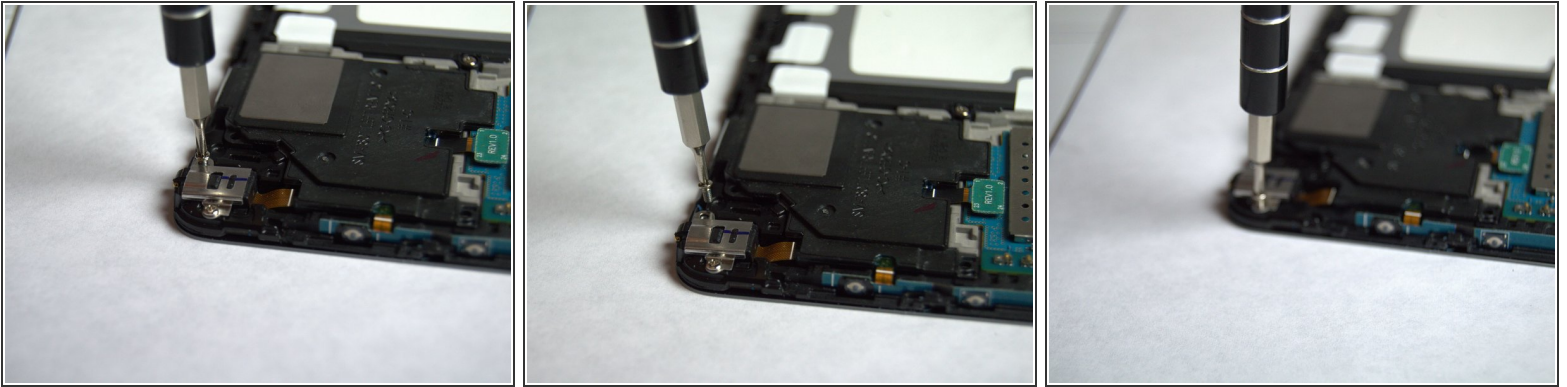
### Step 4 — Speakers



- Starting with the right speaker, remove the 10 mm Phillips #000 screws.
- Use the spudger to begin pulling out the speaker.
- Wedge the spudger beneath the amplifier to remove it from the adhesive holding it down.

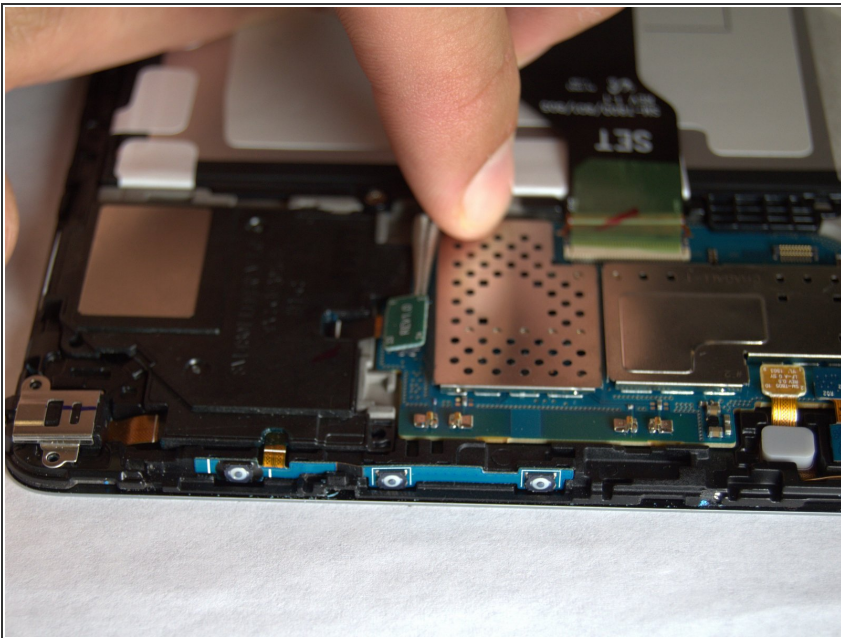


## Step 5



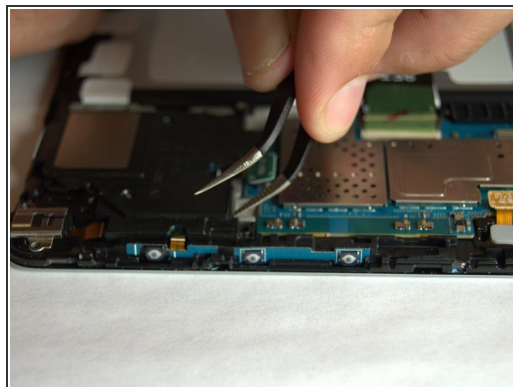
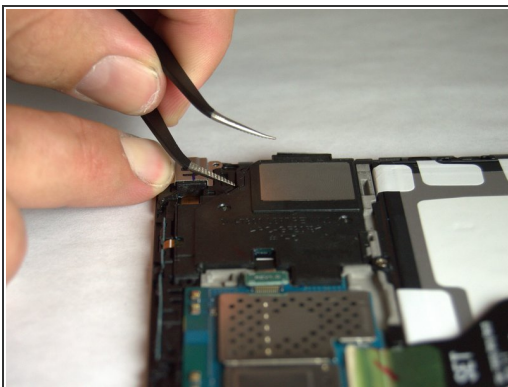
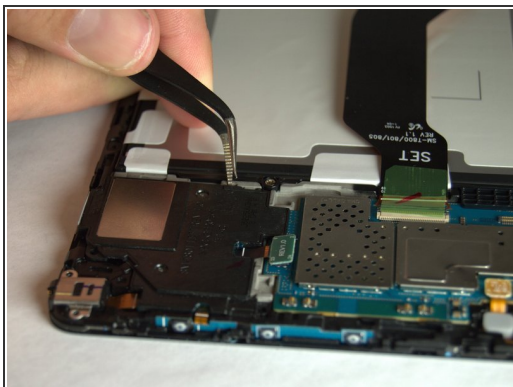
- Remove the two 10mm Phillips #000 screws that hold the left speaker.

## Step 6



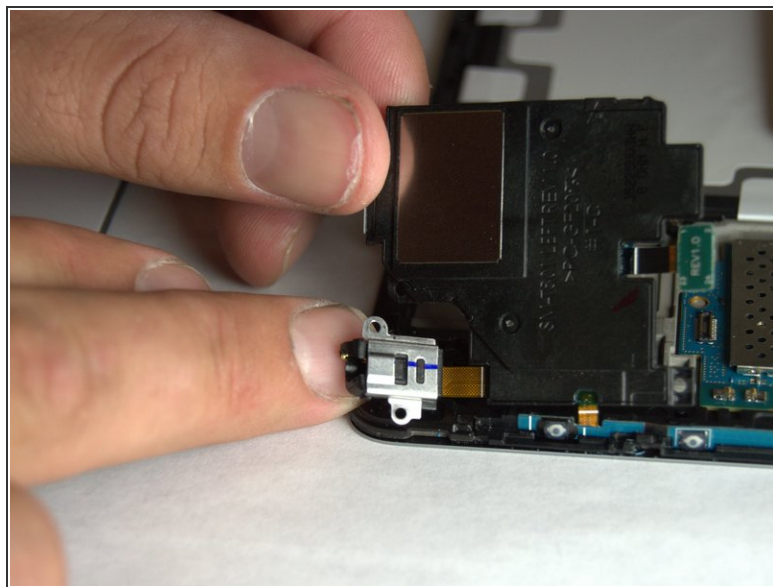
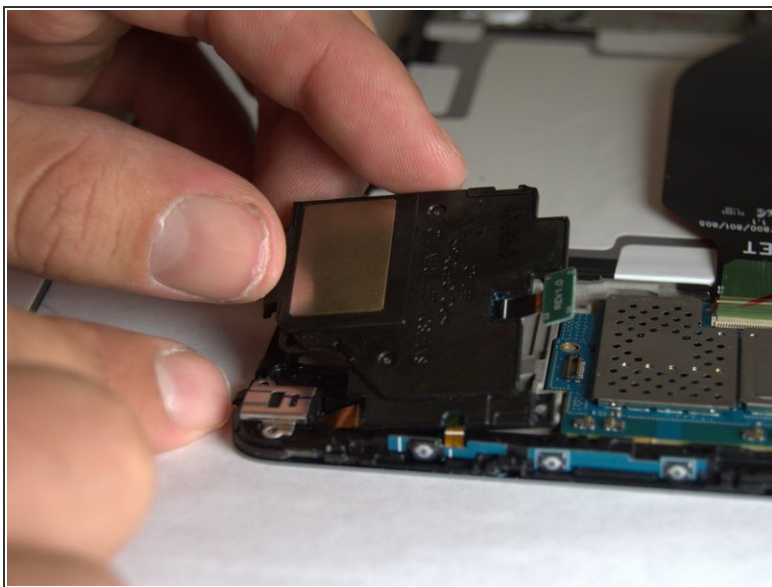
- Take a pair of tweezers and disconnect the left battery.

## Step 7



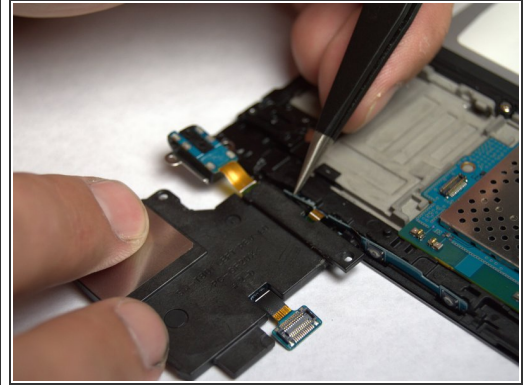
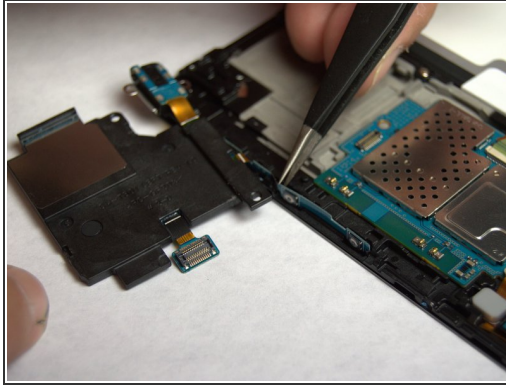
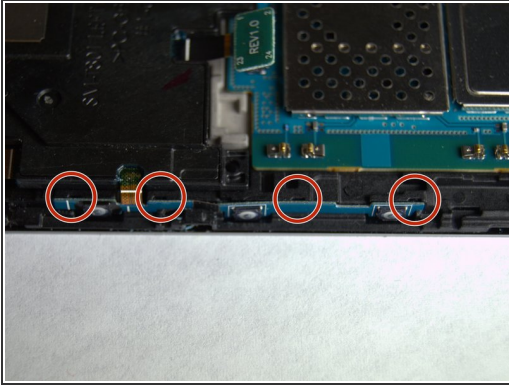
- Use the same pair of tweezers to begin removing the left speaker.
- ⓘ There are three slots surrounding the speaker that can be used to remove it.

## Step 8



- Pull the speaker out and lay it to the side until the rest of the connections are disconnected.

## Step 9



- There are four slots that are located along the border that can be used to remove the strip that is glued to the side.
- Wedge the tweezers in each slot to carefully remove the strip.

To reassemble your device, follow these instructions in reverse order.