



Game Boy Advance Buttons and LCD Screen Replacement

Written By: Aldo Corona



INTRODUCTION

This section describes removing the logic board whole from the case.

TOOLS:

- [Phillips #1 Screwdriver](#) (1)
 - [Tri-point Y0 Screwdriver](#) (1)
-

Step 1 — Battery



- Take the battery cover off by releasing the locking tab and hinging the cover away.

Step 2 — Back Panel



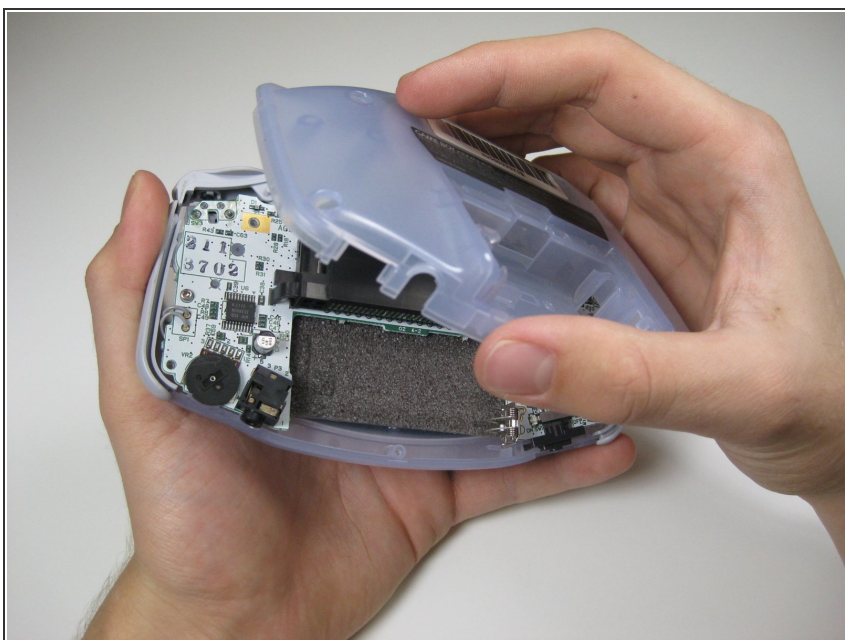
- Remove the six back panel screws using a Tri-wing Screwdriver.

Step 3



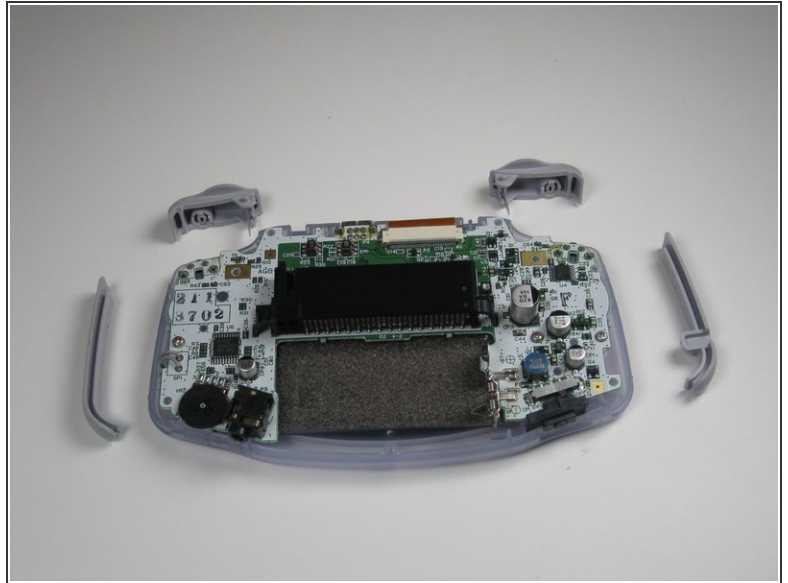
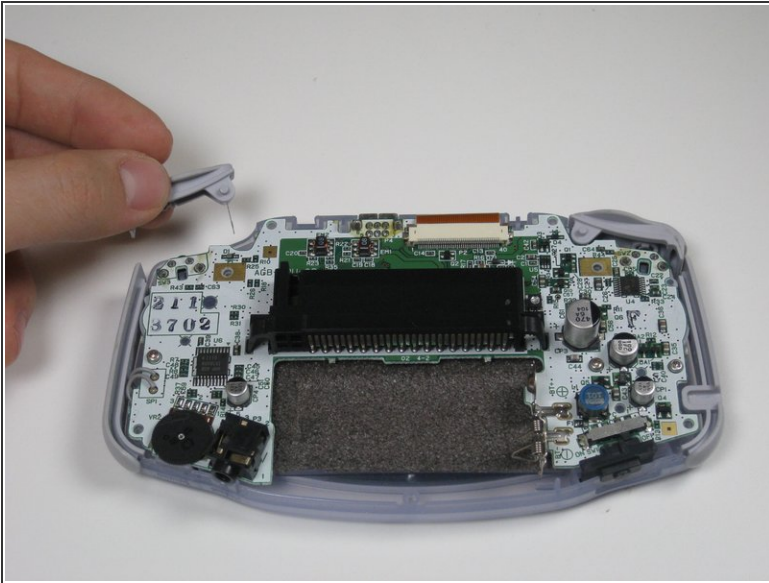
- Remove bottom back panel screw with a Phillips #1 screw driver.

Step 4



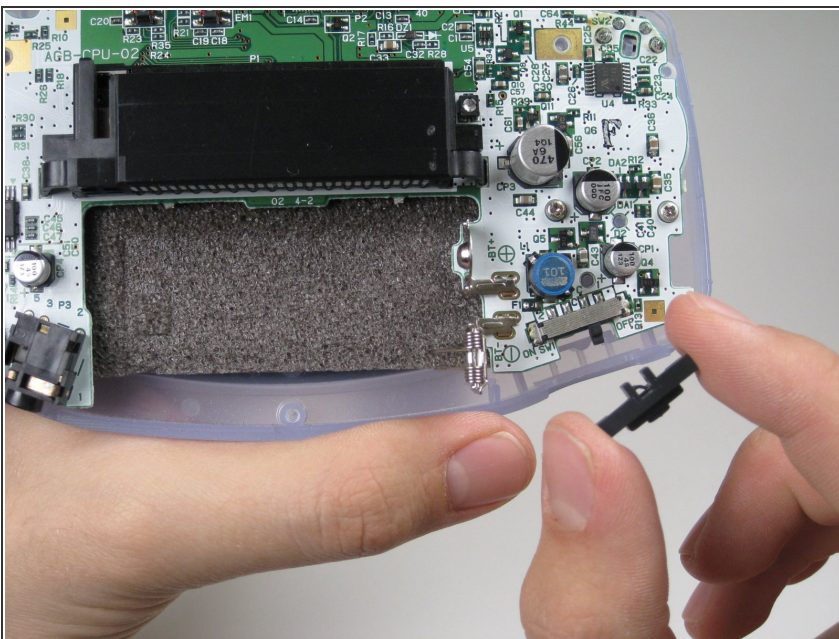
- Remove the back panel by pulling away with one hand and the front secured in the other hand.
- ⚠ Removal of the back panel may cause shoulder buttons and side panels to come loose and fall off.

Step 5 — Shoulder Button and Side Panels



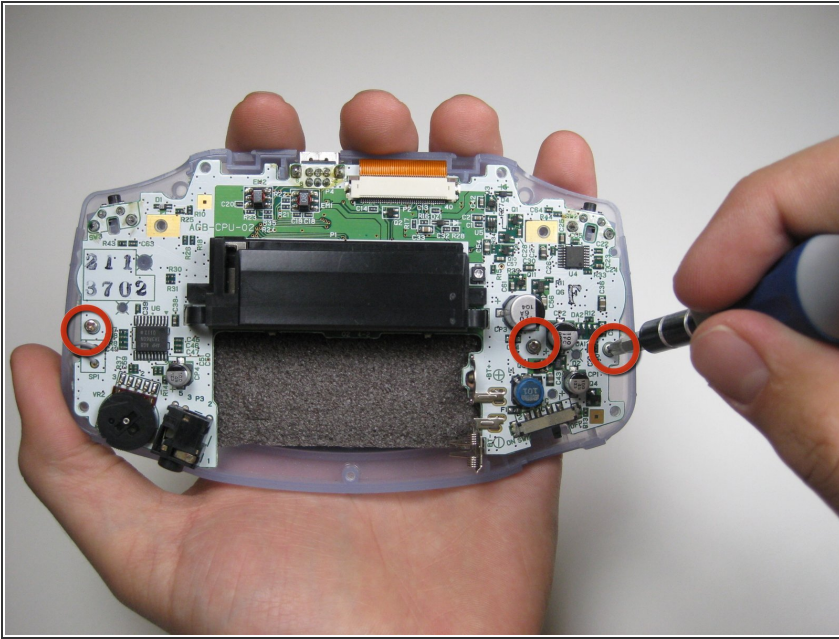
- Remove left and right triggers by lifting and pulling them away from the system.
- Do the same for side panels
- ❗ For finicky or jammed triggers only. Adjust and correct triggers and reassemble. Most jammed triggers are caused by buttons misplaced or jammed in its enclosure.

Step 6 — On/Off Switch



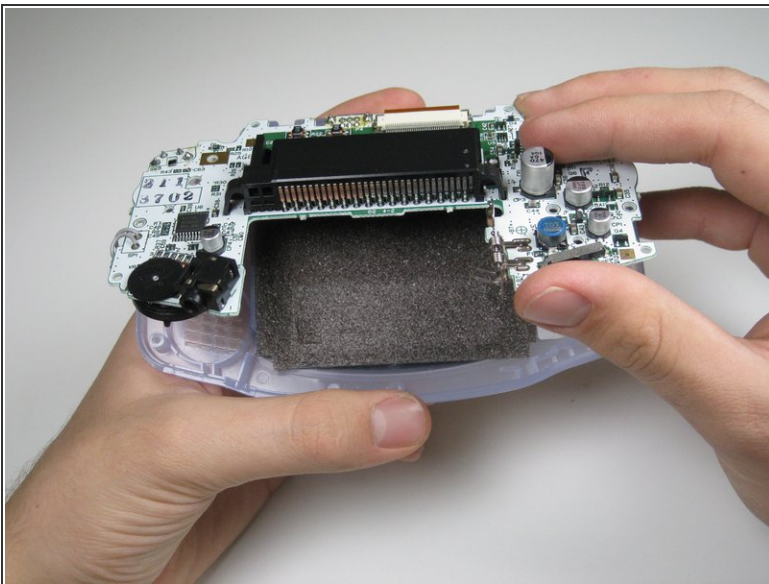
- Remove the gray On/Off Switch by pulling up and away from the unit. Replace with another switch if necessary.

Step 7 — Buttons and LCD Screen



- Remove the three screws on the circuit board with a Phillips #1 screw driver.

Step 8



- Pull circuit board away from the front panel by pulling up at the bottom of the circuit board, keeping the top ribbon still connected.

⚠ Handle with care! The ribbon connecting the circuit board to the LCD screen can easily be damaged and will require replacement if broken.

To reassemble your device, follow these instructions in reverse order.