



# Game Boy Advance LCD Screen Replacement

Written By: Aldo Corona



# INTRODUCTION

Use this guide to remove the LCD screen from the Game Boy Advance.



## TOOLS:

- [Phillips #1 Screwdriver](#) (1)
  - [Spudger](#) (1)
  - [Tri-point Y0 Screwdriver](#) (1)
-

## Step 1 — Battery



- Take the battery cover off by releasing the locking tab and hinging the cover away.

## Step 2 — Back Panel



- Remove the six back panel screws using a Tri-wing Screwdriver.

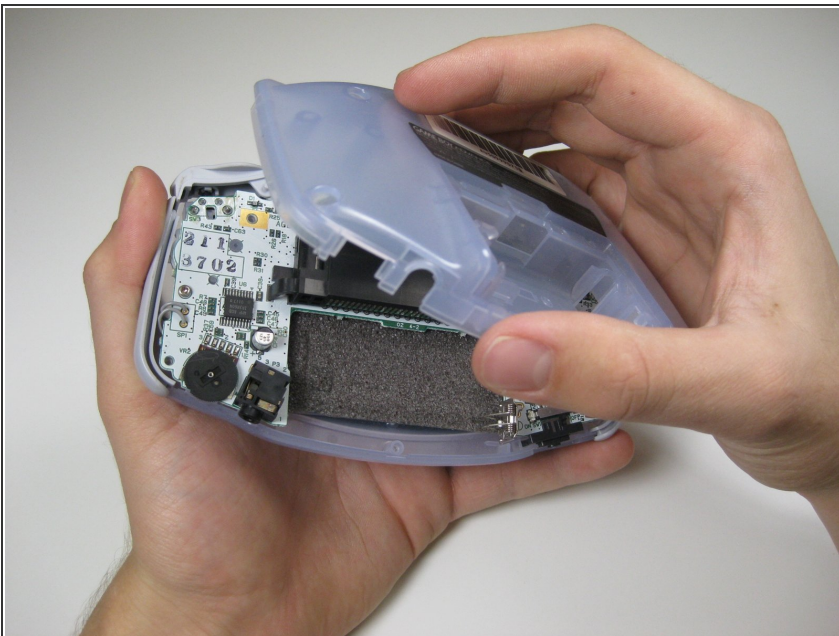


### Step 3



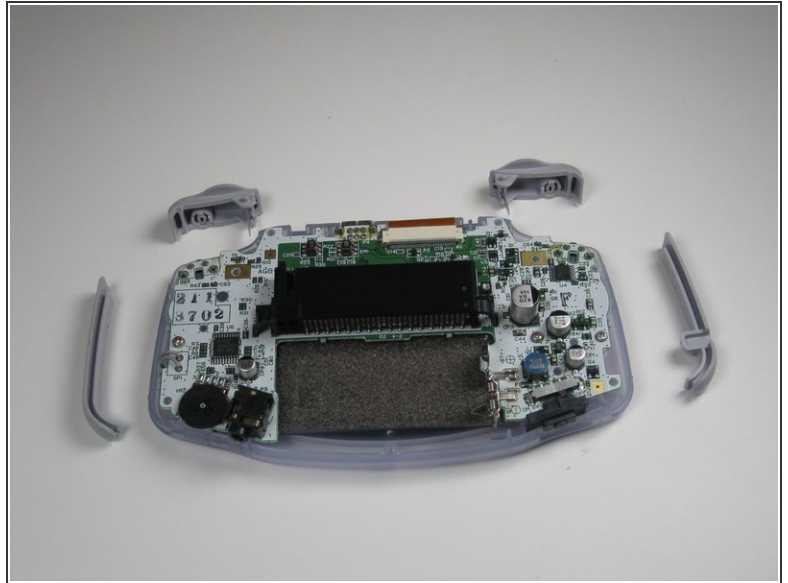
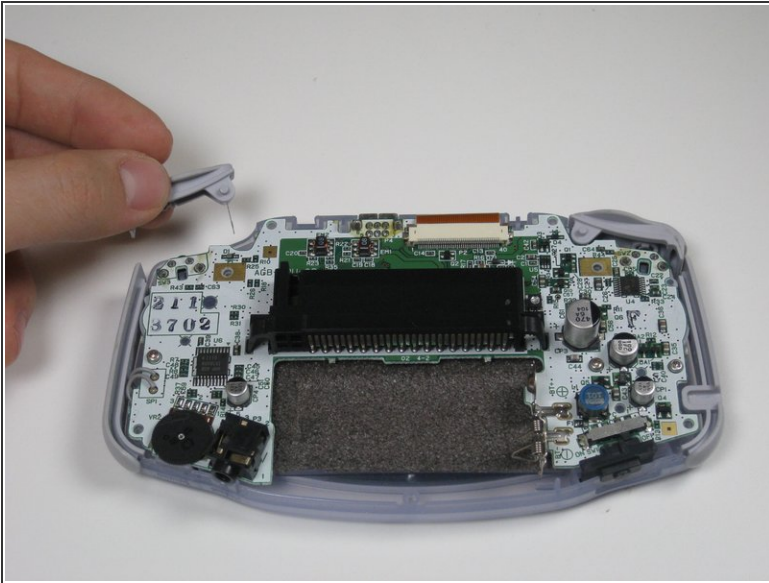
- Remove bottom back panel screw with a Phillips #1 screw driver.

### Step 4



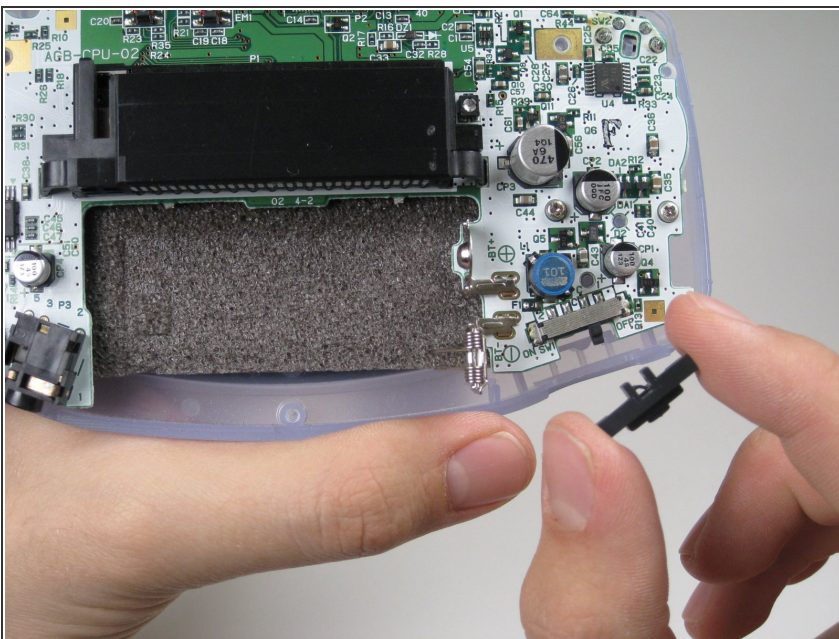
- Remove the back panel by pulling away with one hand and the front secured in the other hand.
- ⚠ Removal of the back panel may cause shoulder buttons and side panels to come loose and fall off.

## Step 5 — Shoulder Button and Side Panels



- Remove left and right triggers by lifting and pulling them away from the system.
- Do the same for side panels
- ❗ For finicky or jammed triggers only. Adjust and correct triggers and reassemble. Most jammed triggers are caused by buttons misplaced or jammed in its enclosure.

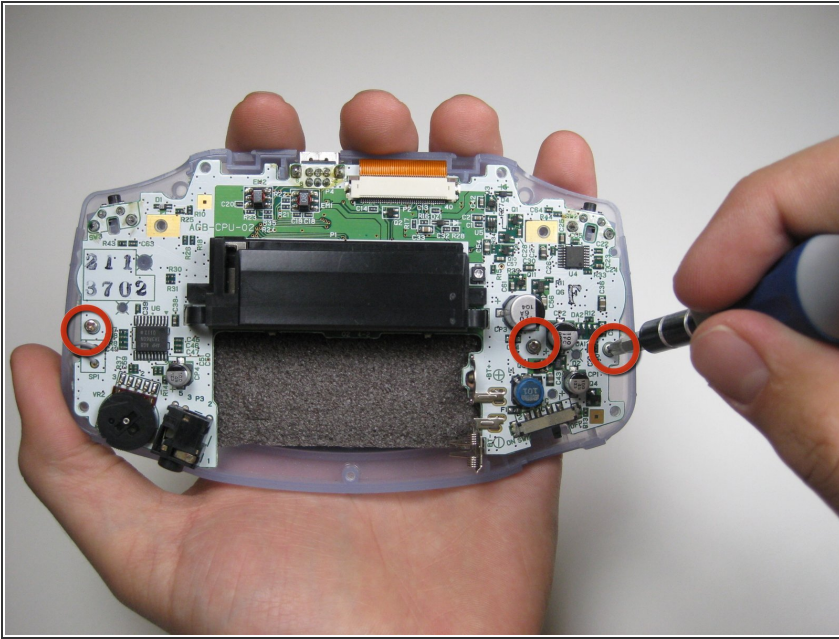
## Step 6 — On/Off Switch



- Remove the gray On/Off Switch by pulling up and away from the unit. Replace with another switch if necessary.

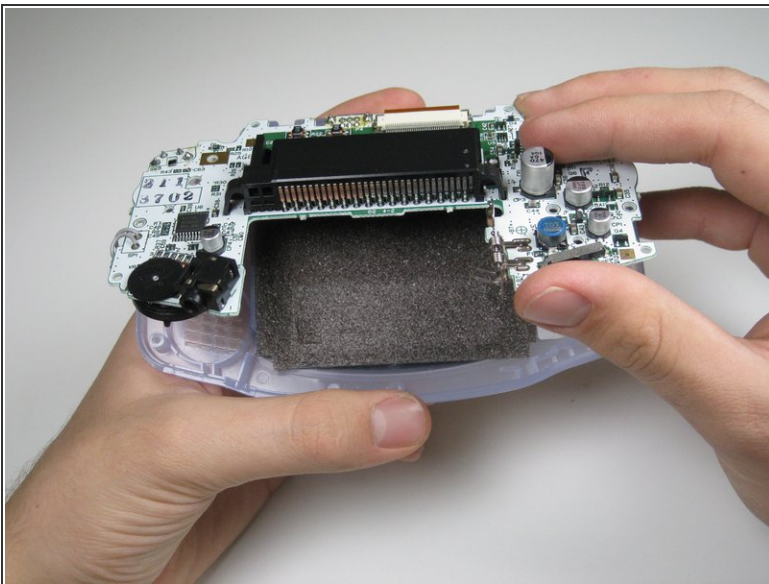


## Step 7 — Buttons and LCD Screen



- Remove the three screws on the circuit board with a Phillips #1 screw driver.

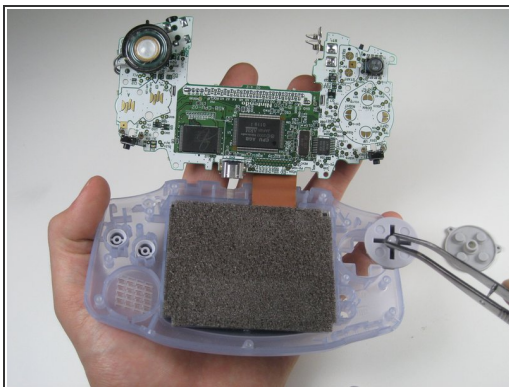
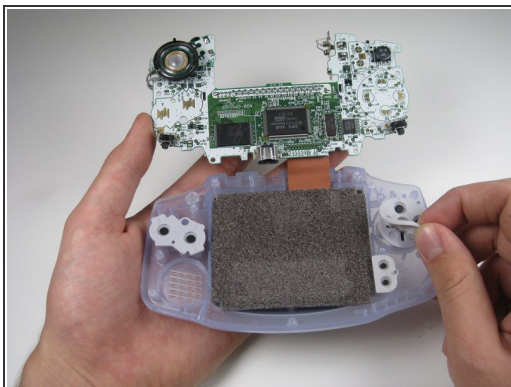
## Step 8



- Pull circuit board away from the front panel by pulling up at the bottom of the circuit board, keeping the top ribbon still connected.

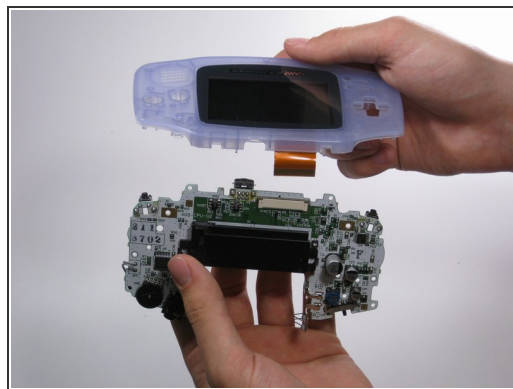
⚠ Handle with care! The ribbon connecting the circuit board to the LCD screen can easily be damaged and will require replacement if broken.

## Step 9 — Buttons



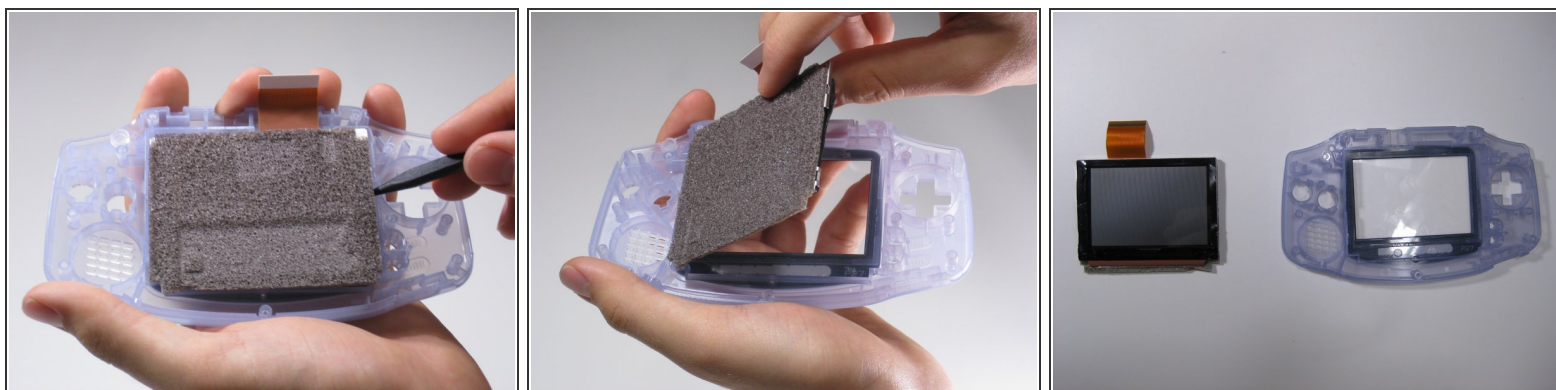
- Remove the rubber button pads from their pockets.
- Remove the plastic buttons and the D-pad from beneath the rubber pads with tweezers or by hand.

## Step 10 — LCD Screen




- Carefully note the brown colored locking bar that shims the ribbon cable in it's housing so it cannot slip.
- Using a nylon stick (or some other ESD safe probe) *gently* push both sides of the locking bar up.
- Now the ribbon cable should move freely. A careful prod using your nylon spudger should be able to free the cable. *This should **barely** require any force at all.* Otherwise, check that the locking bar is fully disengaged.

## Step 11



- Use the spudger to lift the screen from the front panel. Place the spudger in the space directly left of the D-pad.

 The screen and the front panel is connected by a black tape that could rip if not removed carefully.

To reassemble your device, follow these instructions in reverse order.