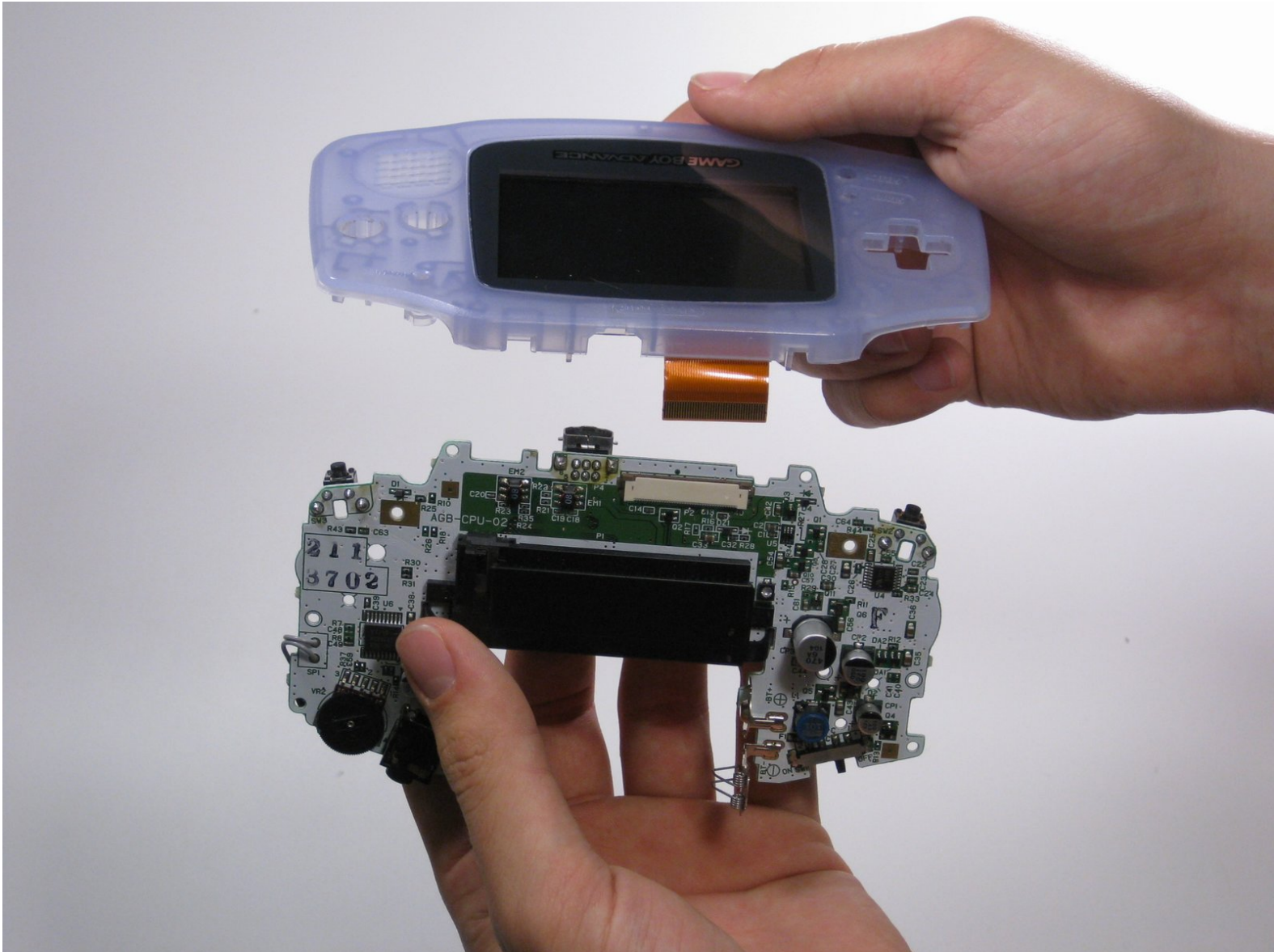




Game Boy Advance Logic Board Replacement

Written By: Jay Aricheta



INTRODUCTION

Use this guide to replace the logic board.



TOOLS:

- [Phillips #1 Screwdriver](#) (1)
 - [Spudger](#) (1)
 - [Tri-point Y0 Screwdriver](#) (1)
-

Step 1 — Battery



- Take the battery cover off by releasing the locking tab and hinging the cover away.

Step 2 — Back Panel



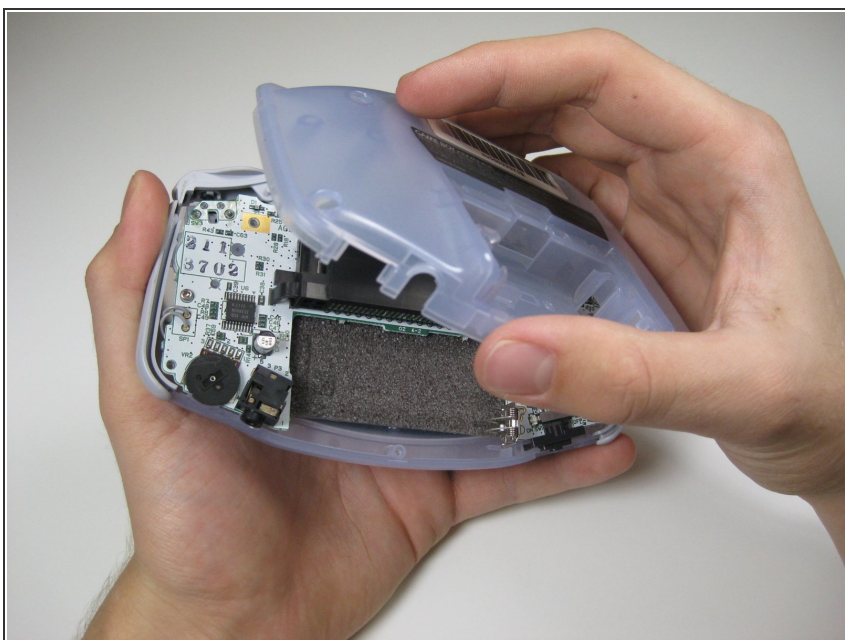
- Remove the six back panel screws using a Tri-wing Screwdriver.

Step 3



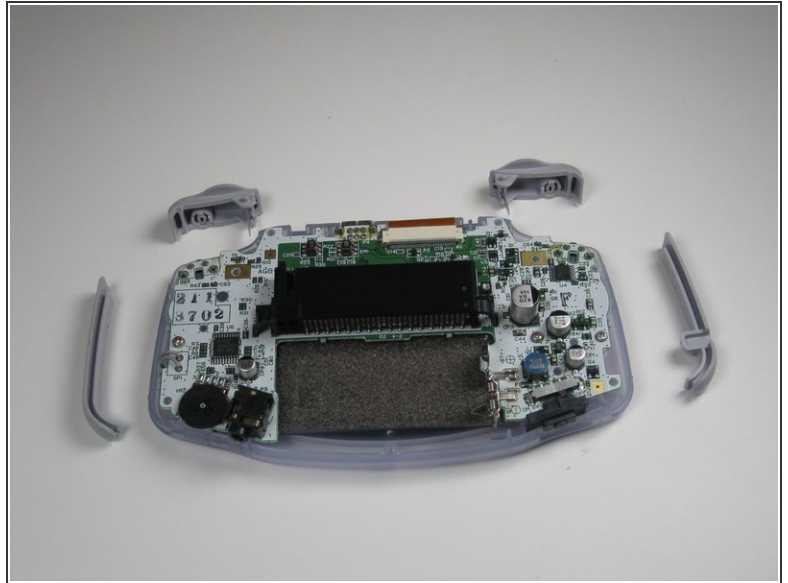
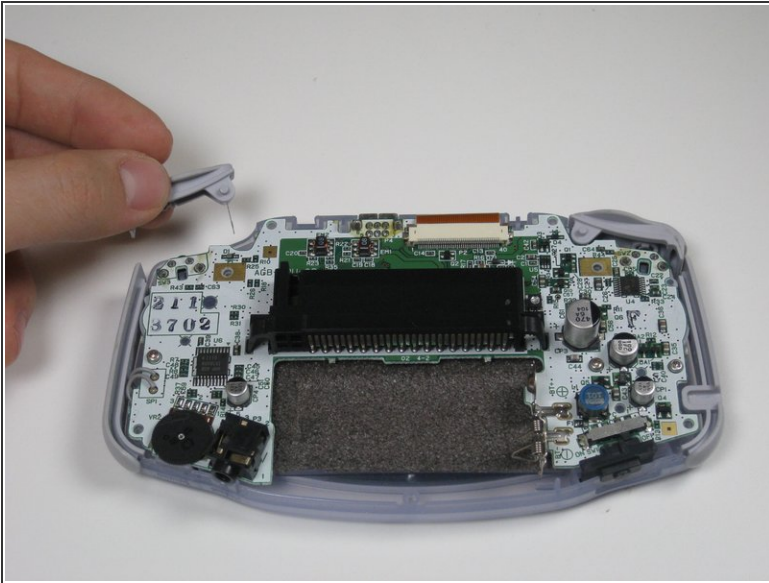
- Remove bottom back panel screw with a Phillips #1 screw driver.

Step 4



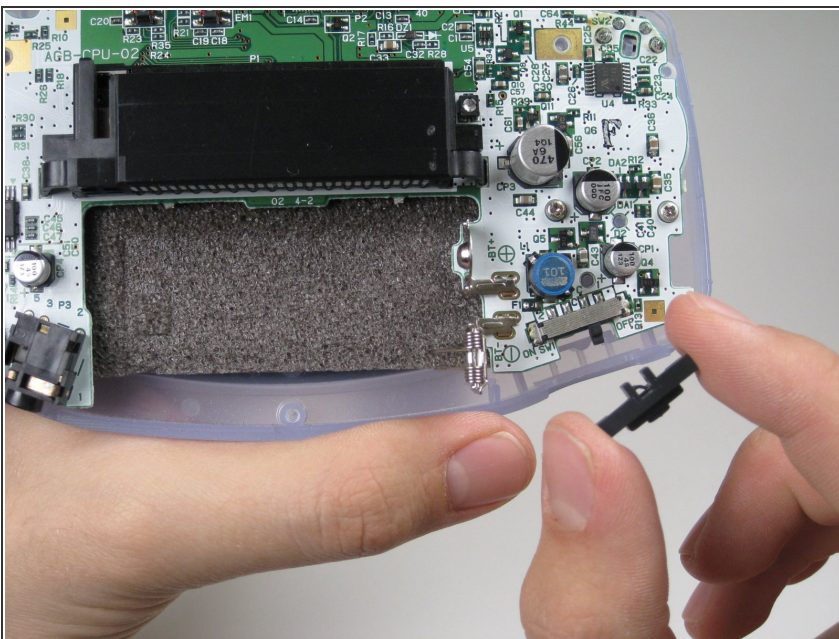
- Remove the back panel by pulling away with one hand and the front secured in the other hand.
- ⚠ Removal of the back panel may cause shoulder buttons and side panels to come loose and fall off.

Step 5 — Shoulder Button and Side Panels



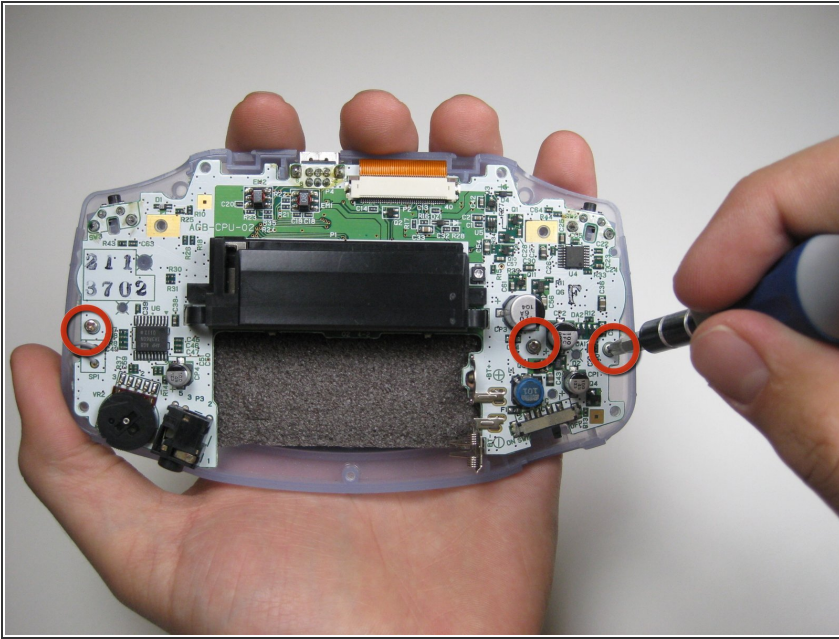
- Remove left and right triggers by lifting and pulling them away from the system.
- Do the same for side panels
- ❗ For finicky or jammed triggers only. Adjust and correct triggers and reassemble. Most jammed triggers are caused by buttons misplaced or jammed in its enclosure.

Step 6 — On/Off Switch



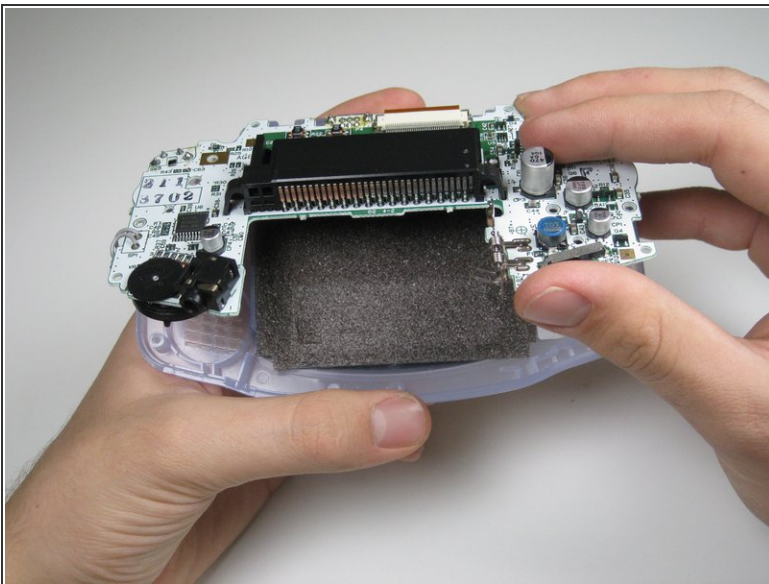
- Remove the gray On/Off Switch by pulling up and away from the unit. Replace with another switch if necessary.

Step 7 — Buttons and LCD Screen



- Remove the three screws on the circuit board with a Phillips #1 screw driver.

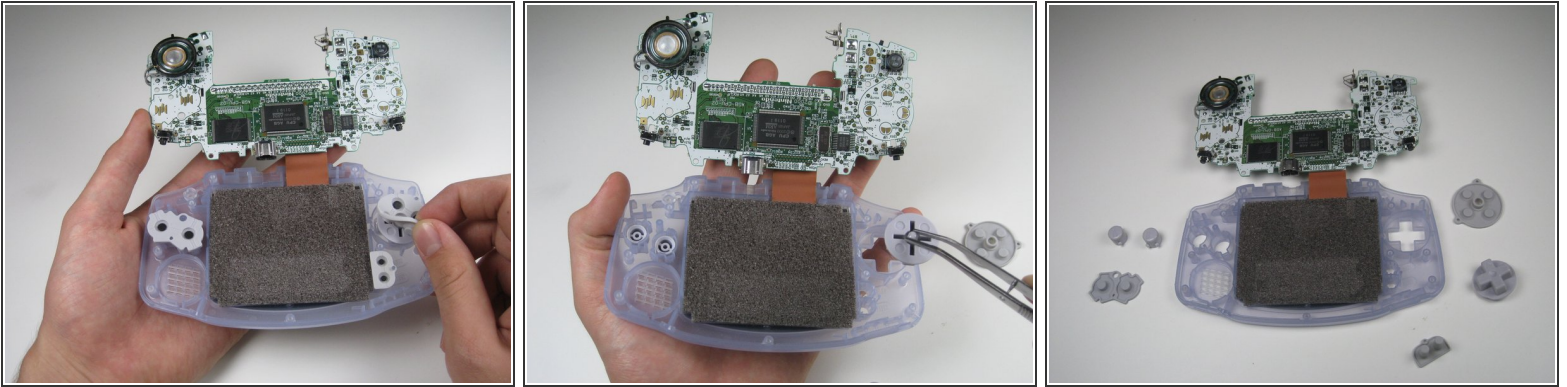
Step 8



- Pull circuit board away from the front panel by pulling up at the bottom of the circuit board, keeping the top ribbon still connected.

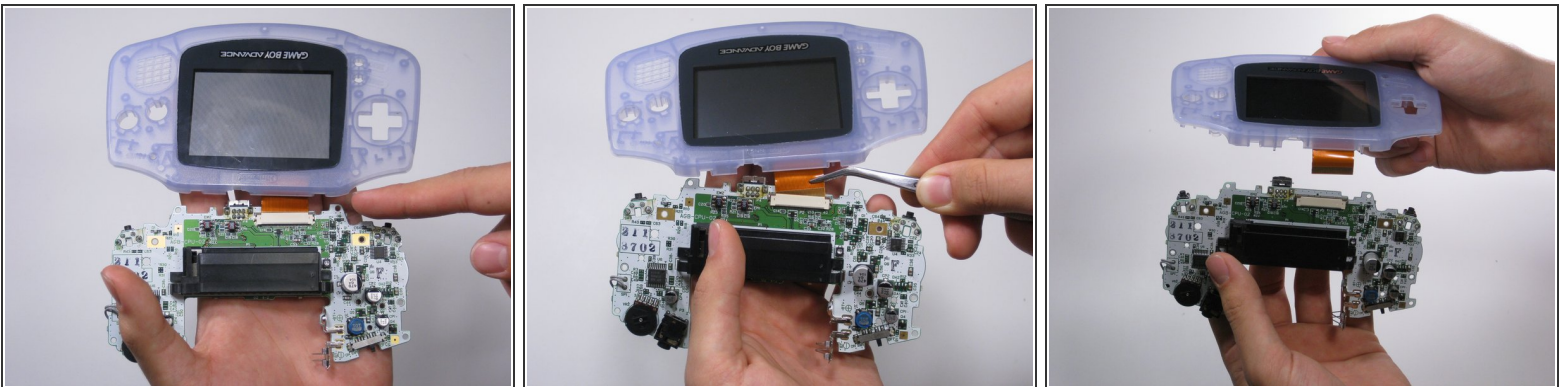
⚠ Handle with care! The ribbon connecting the circuit board to the LCD screen can easily be damaged and will require replacement if broken.

Step 9 — Buttons



- Remove the rubber button pads from their pockets.
- Remove the plastic buttons and the D-pad from beneath the rubber pads with tweezers or by hand.

Step 10 — Logic Board



- Using the tweezers, gently pull the ribbon from the logic board.

To reassemble your device, follow these instructions in reverse order.