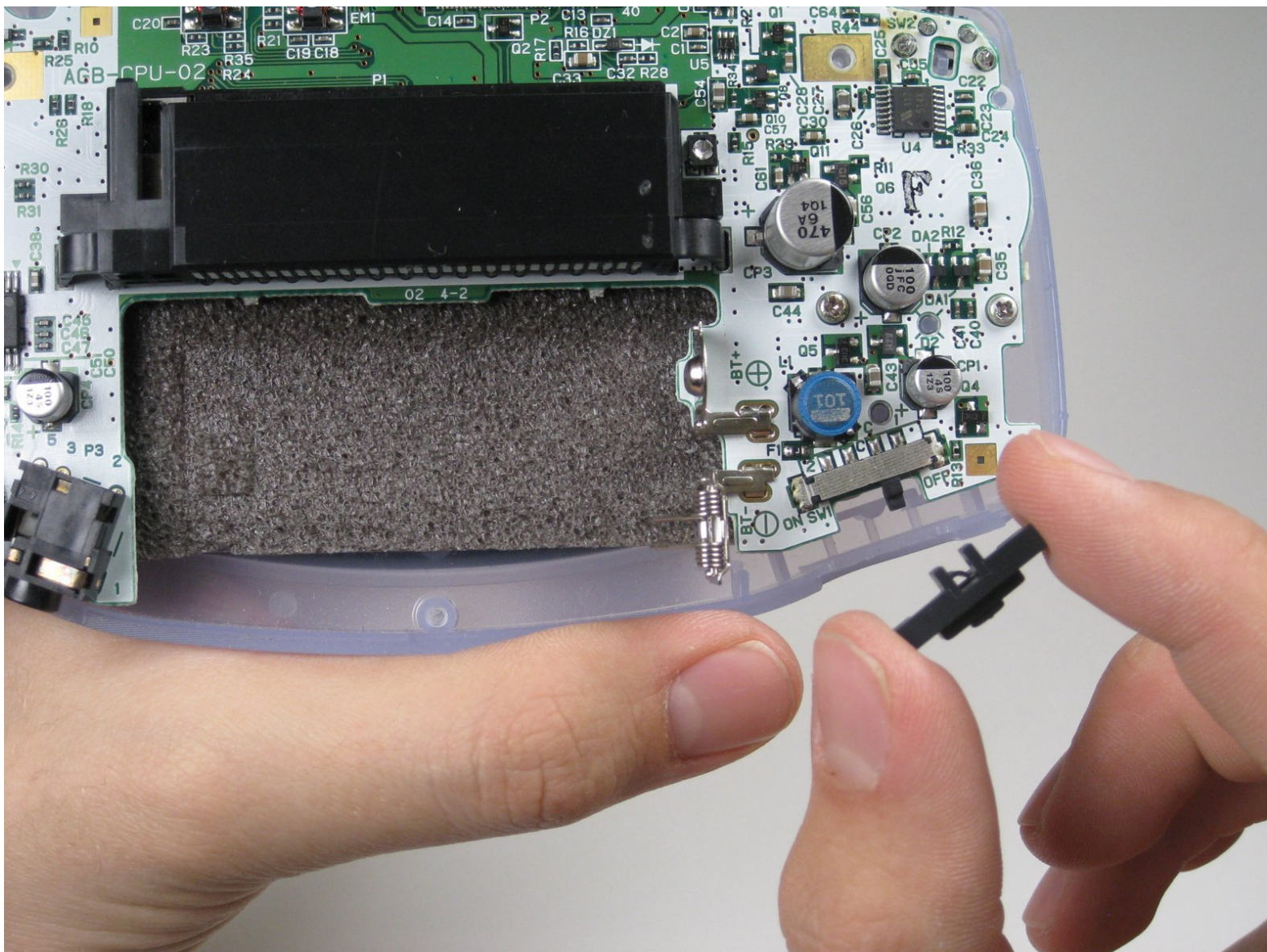




Game Boy Advance On/Off Switch Replacement

Written By: Adam



INTRODUCTION

Use this repair guide when debris needs to be cleared from the On/Off switch or it needs to be replaced.



TOOLS:

- [Phillips #1 Screwdriver](#) (1)
 - [Tri-point Y0 Screwdriver](#) (1)
-

Step 1 — Battery



- Take the battery cover off by releasing the locking tab and hinging the cover away.

Step 2 — Back Panel



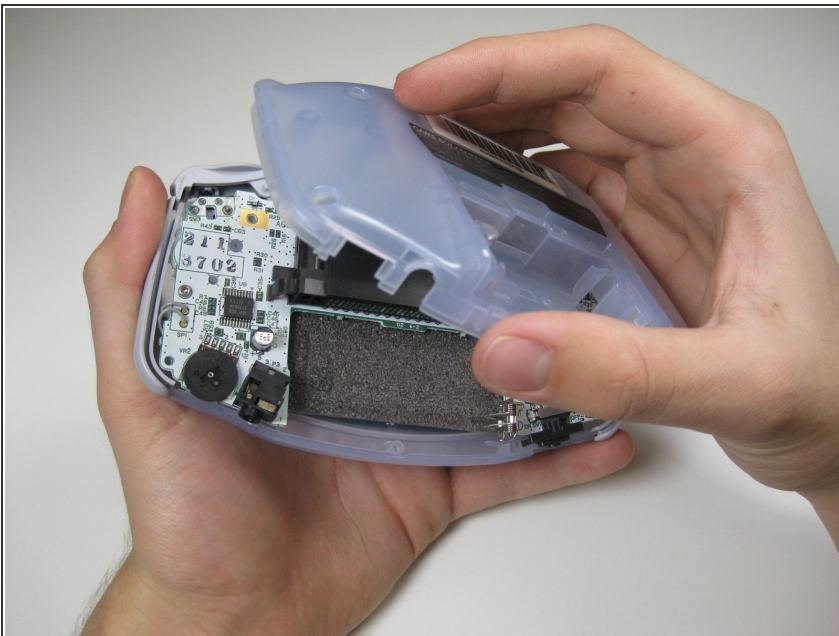
- Remove the six back panel screws using a Tri-wing Screwdriver.

Step 3



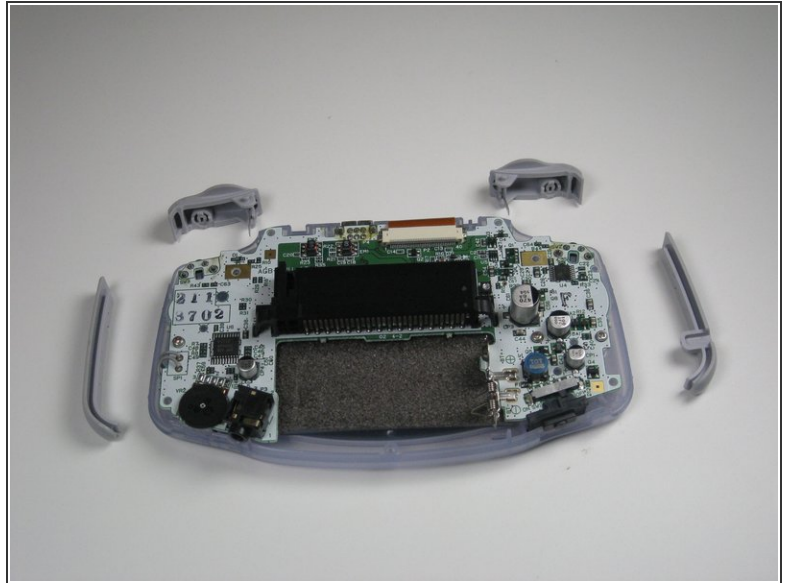
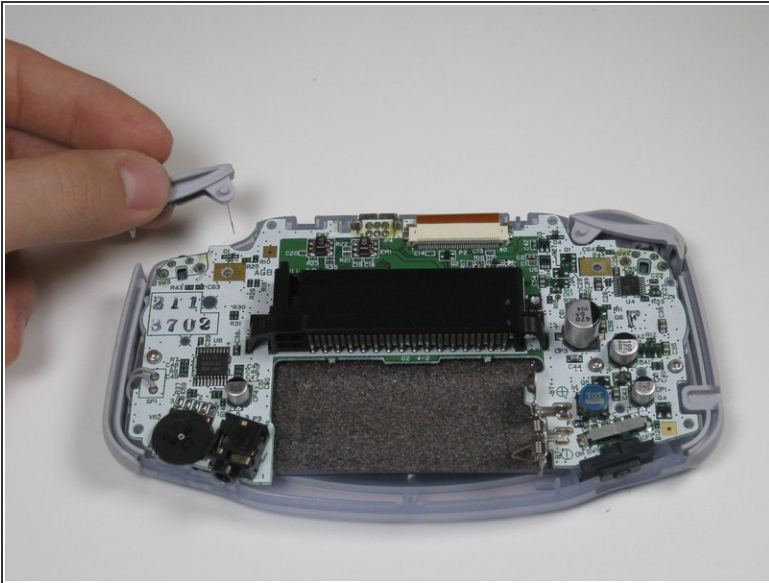
- Remove bottom back panel screw with a Phillips #1 screw driver.

Step 4



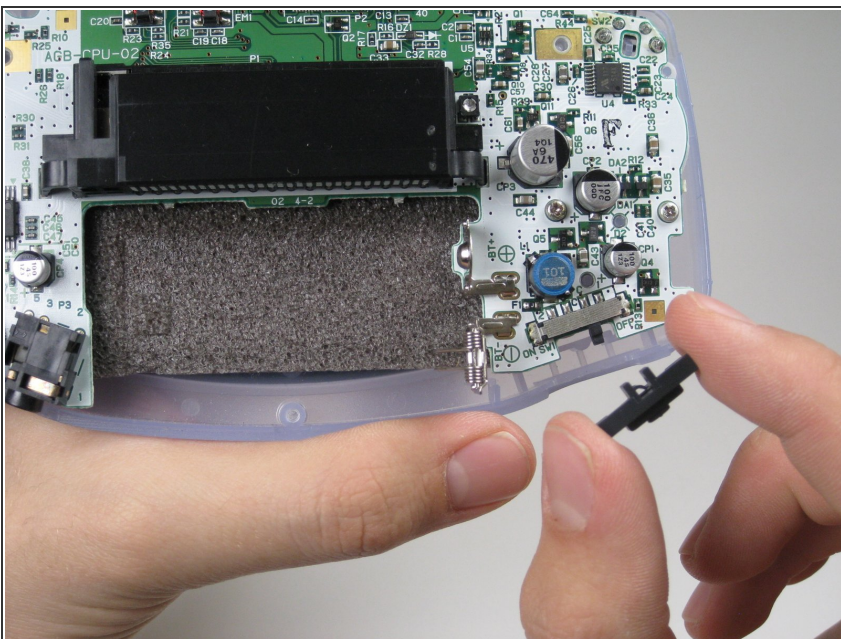
- Remove the back panel by pulling away with one hand and the front secured in the other hand.
- ⚠ Removal of the back panel may cause shoulder buttons and side panels to come loose and fall off.

Step 5 — Shoulder Button and Side Panels



- Remove left and right triggers by lifting and pulling them away from the system.
- Do the same for side panels
- ❗ For finicky or jammed triggers only. Adjust and correct triggers and reassemble. Most jammed triggers are caused by buttons misplaced or jammed in its enclosure.

Step 6 — On/Off Switch



- Remove the gray On/Off Switch by pulling up and away from the unit. Replace with another switch if necessary.

To reassemble your device, follow these instructions in reverse order.