



# Game Boy Micro Buttons Replacement

Written By: Jack



---

# INTRODUCTION

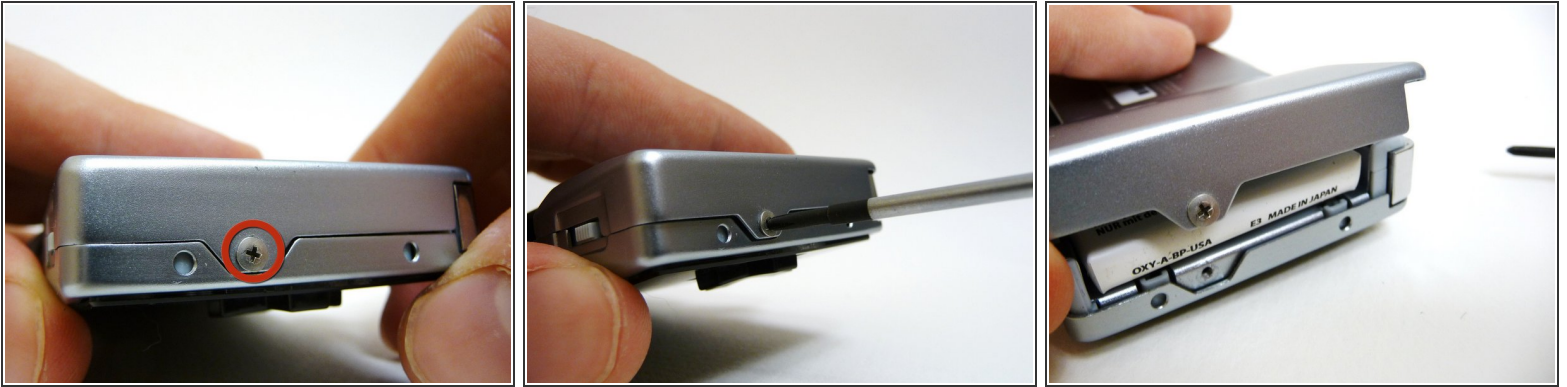
Use the following guide to replace buttons in the device.



## TOOLS:

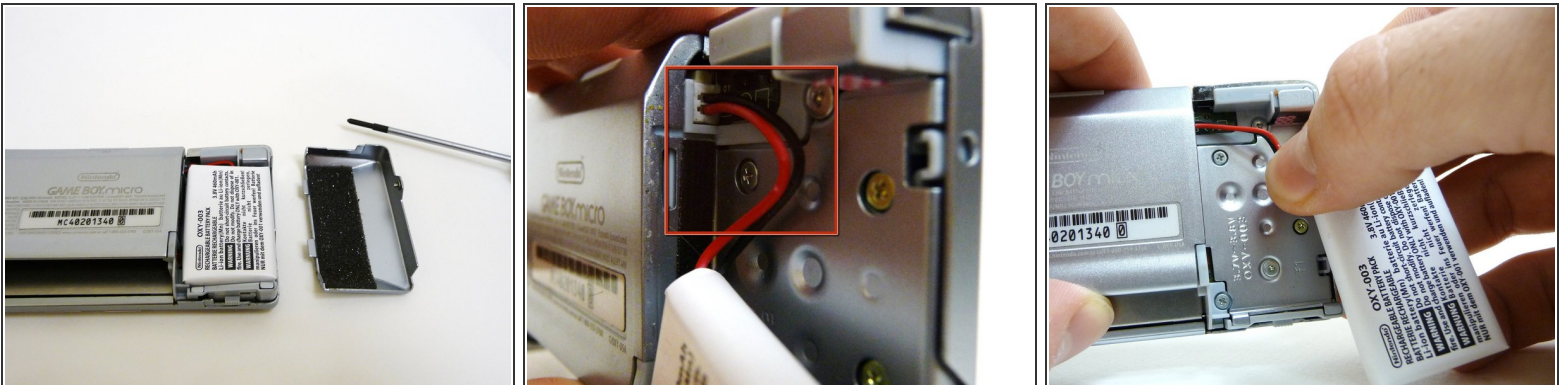
- [Phillips #00 Screwdriver](#) (1)
  - [Tri-point Y0 Screwdriver](#) (1)
  - [Tweezers](#) (1)
-

## Step 1 — Battery Cover



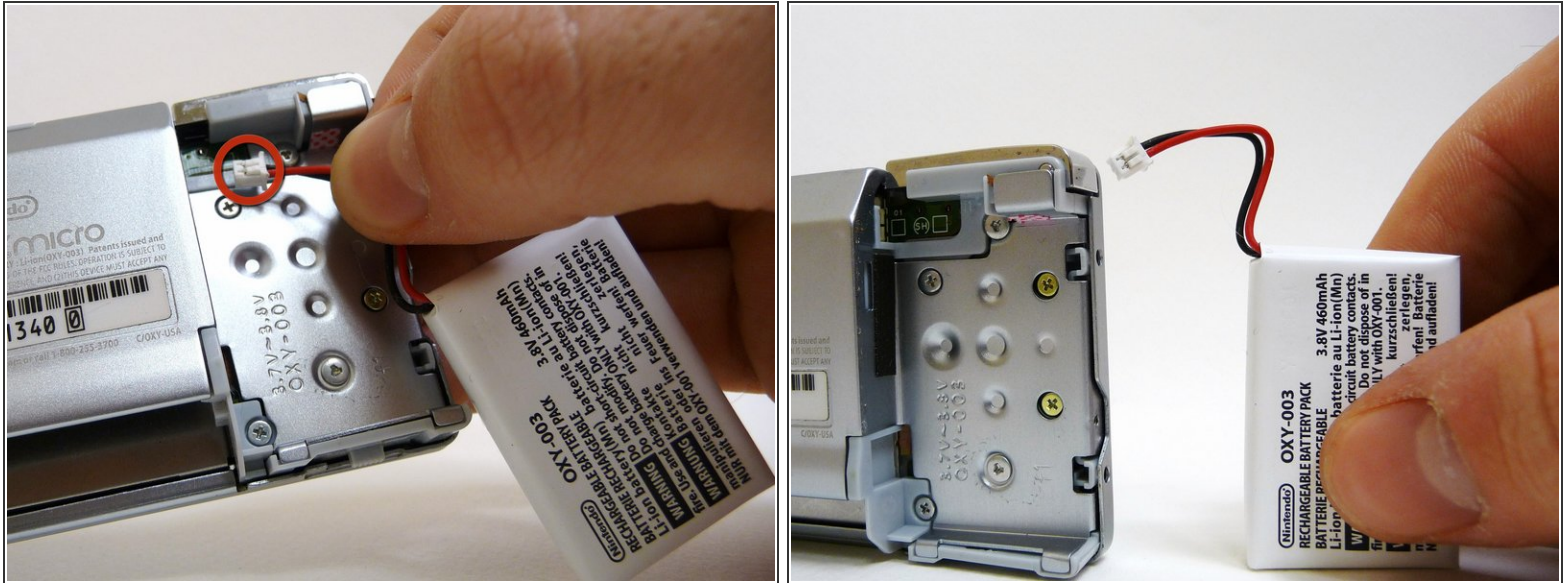
- Remove the Phillips #00 screw on the side of the Game Boy closest to the directional pad.
- Once the screw has been loosened, lift the cover off the back of the device.

## Step 2



- Once the back cover is removed, you should see that the battery is connected to the device by two wires and a plastic connector.
- Gently grab the wires.

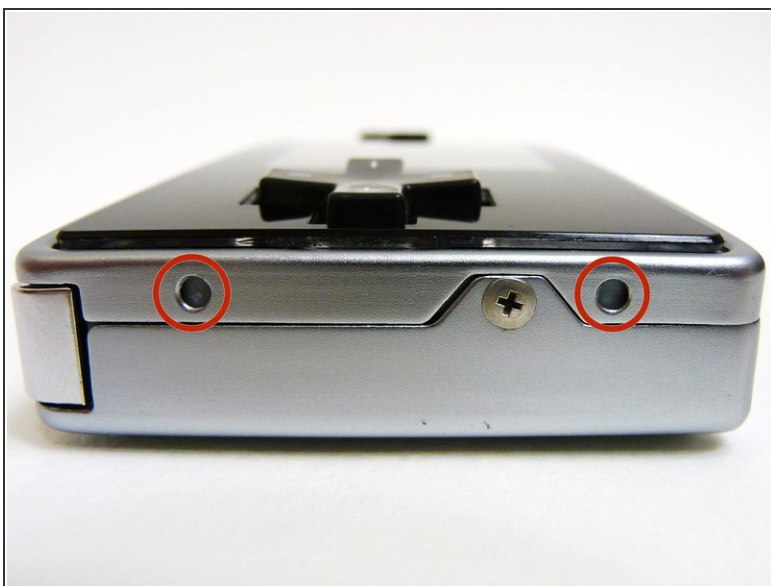
## Step 3



- Carefully pull the wires until the connector comes out of the device.
- ⚠ Be careful! Don't pull too hard, or you may rip the wires out from the connector.
- ☞ When putting the battery back into the device, make sure the connector is put in exactly the way it came out.

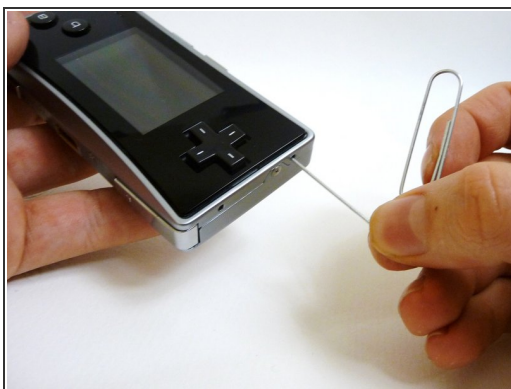


## Step 4 — Faceplate



- Locate the two circular holes on the side of the Game Boy nearest to the directional pad.

## Step 5



- Straighten the end of a paper clip and push it into each of the circular holes.
- ⓘ You may hear a faint click afterwards.
- Use the paper clip to lever the faceplate off from the unit.

## Step 6 — Buttons



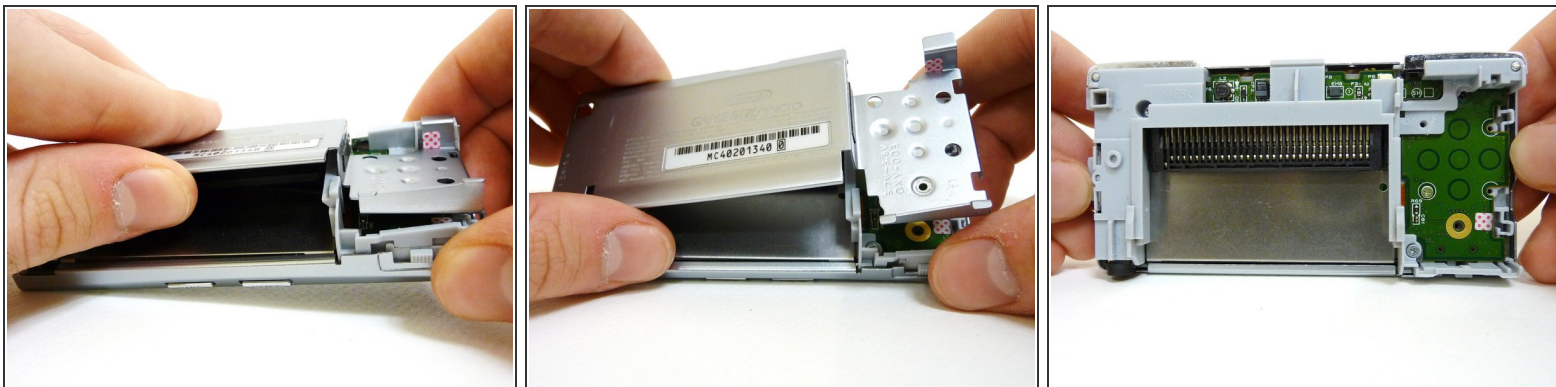
- Remove the two tri-wing screws on the top of the Game Boy and the two screws next to the volume/contrast switch.

## Step 7



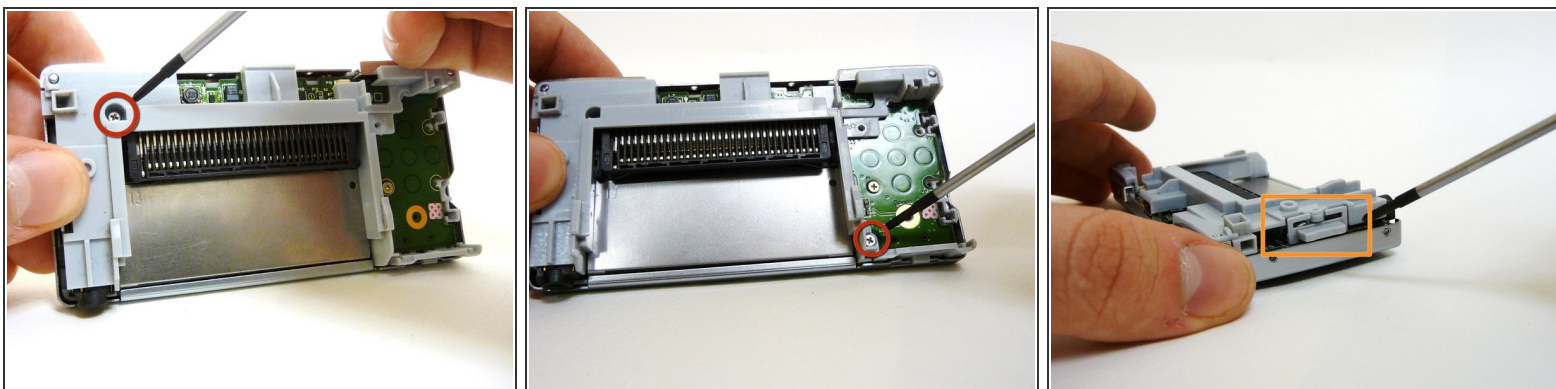
- Remove the three Phillips #00 screws.
- Remove the two tri-wing screws.

## Step 8



- Lift the back cover off of the Game Boy.

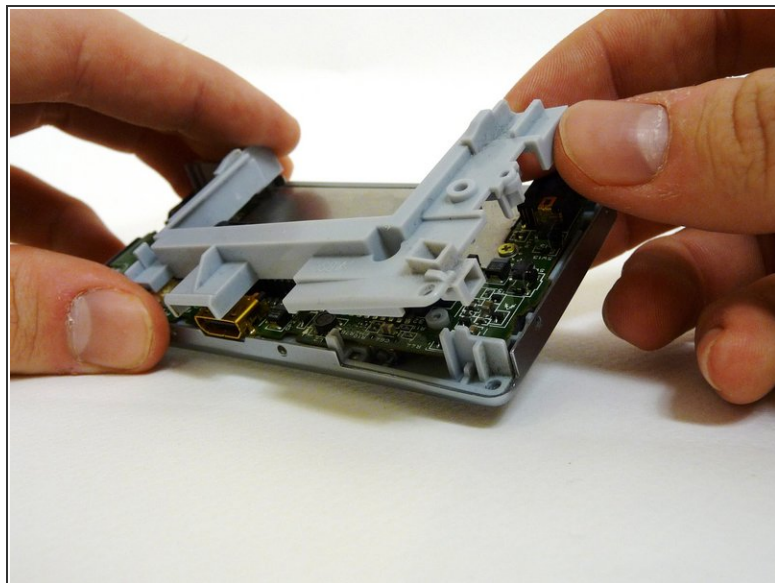
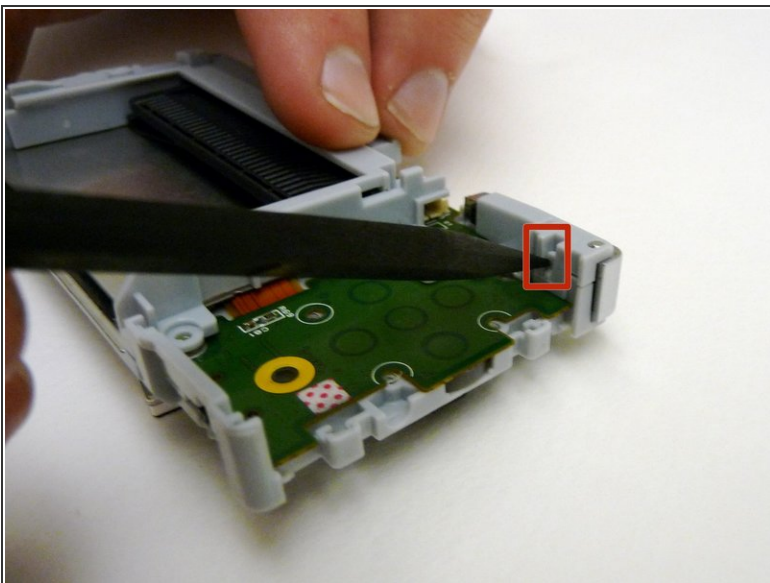
## Step 9



- Remove the two Phillips #00 screws from the plastic frame.
  - As you are pulling off the plastic frame, the shoulder buttons and the volume switch may fall out of the device.
- i** Underneath each shoulder button is a small spring. Do not lose them.

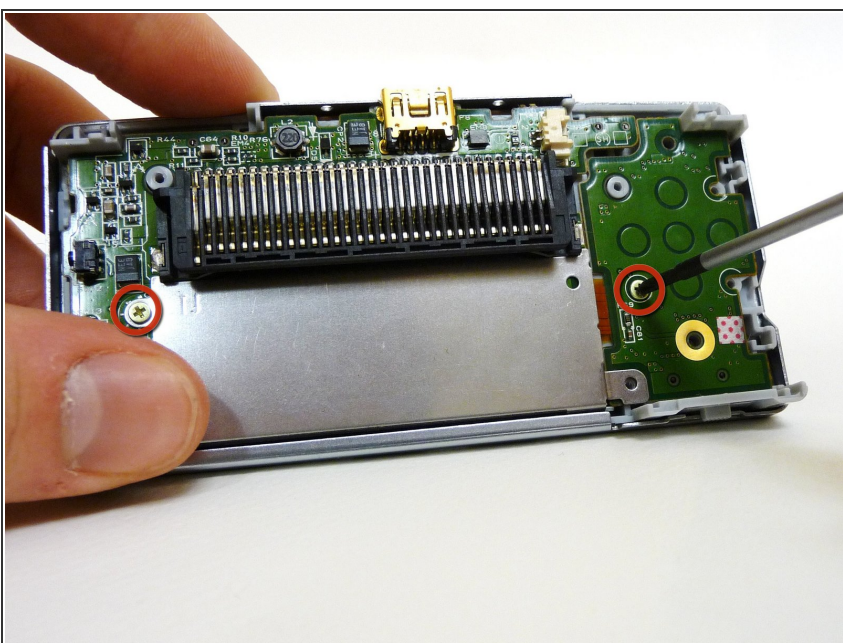


## Step 10



- With a spudger, depress the small clip on the lower right corner of the plastic guard.
- Grab the edges of the plastic frame and lift the frame off the motherboard.

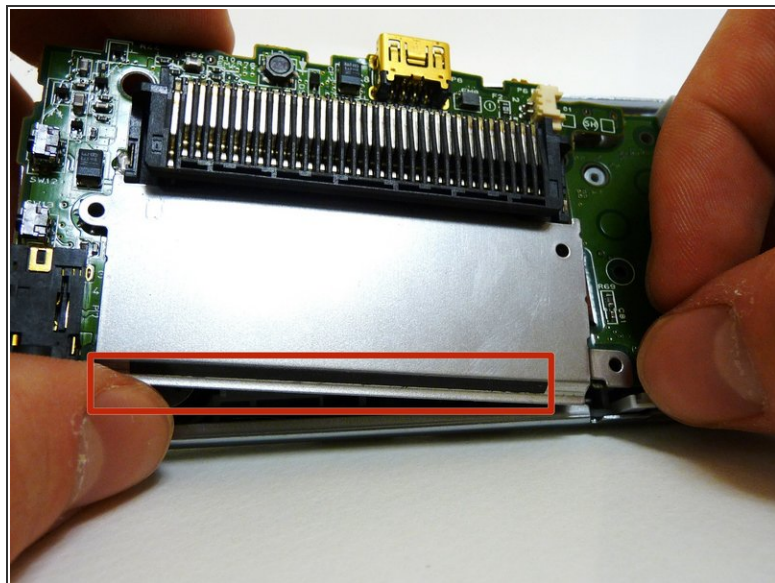
## Step 11



- Remove the two gold Phillips #00 screws from the motherboard.

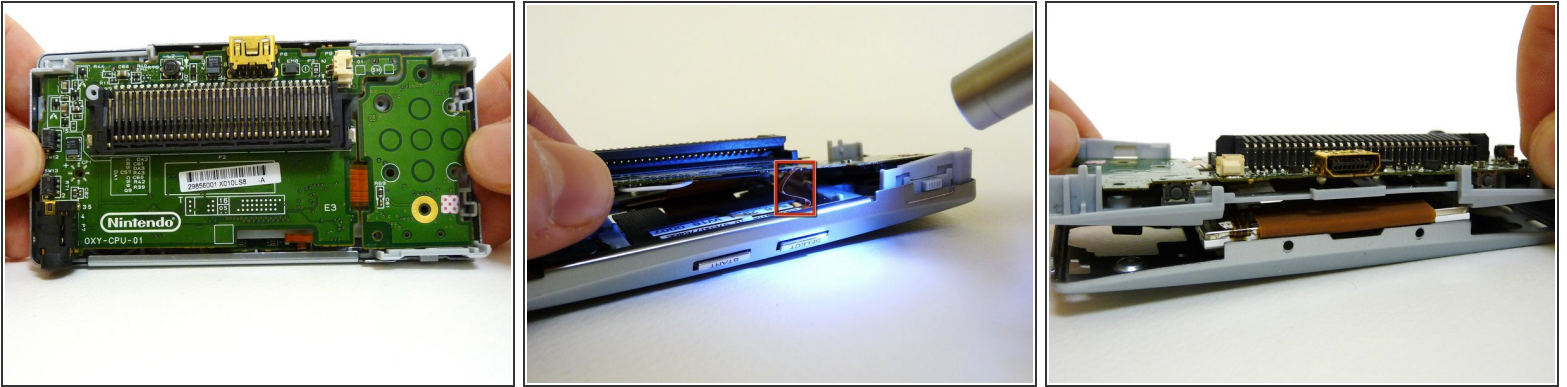


## Step 12





- With one hand, gently slide the top left end of the motherboard up and out of the front case.
- With your other hand, pull out the EMI shield until the tab comes out of the front case.
- Once the tab is pulled out from the bottom, slide the EMI shield down and out of the device.

## Step 13



- The entire motherboard is now accessible.

 Take extreme care when working with the motherboard to avoid damaging the device and its components.

- A small ribbon cable connects the start and select buttons to the motherboard. It can rip very easily, so do not pull on it.
- Lift the motherboard and the front plastic cover assembly off of the front case.
-  Once the front case is removed, the plastic on/off switch will fall out of place.

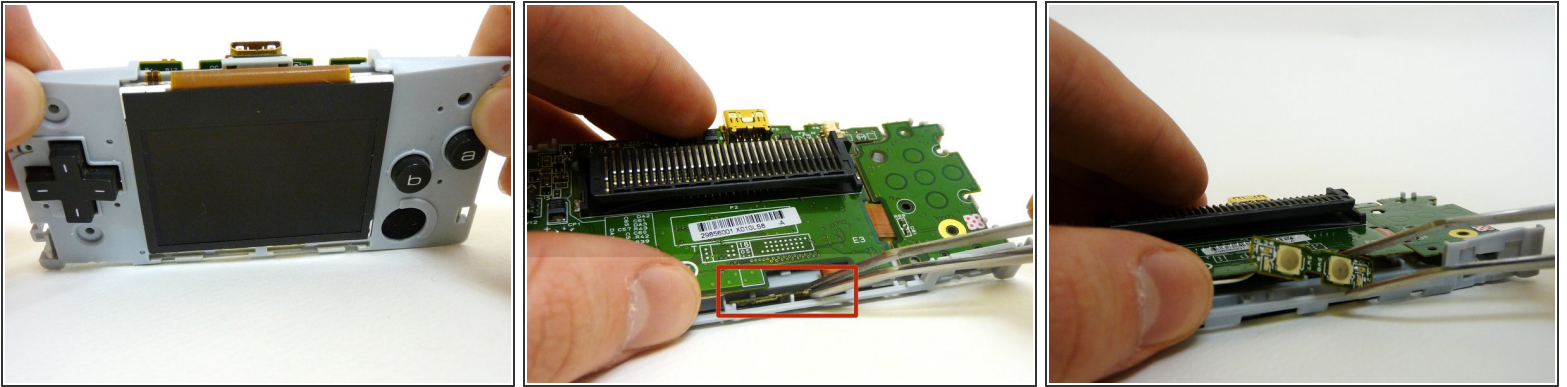
## Step 14



- When you remove the motherboard from the front case, the start and select buttons may fall out.
- If the buttons do not fall out, remove them with a pair of tweezers.

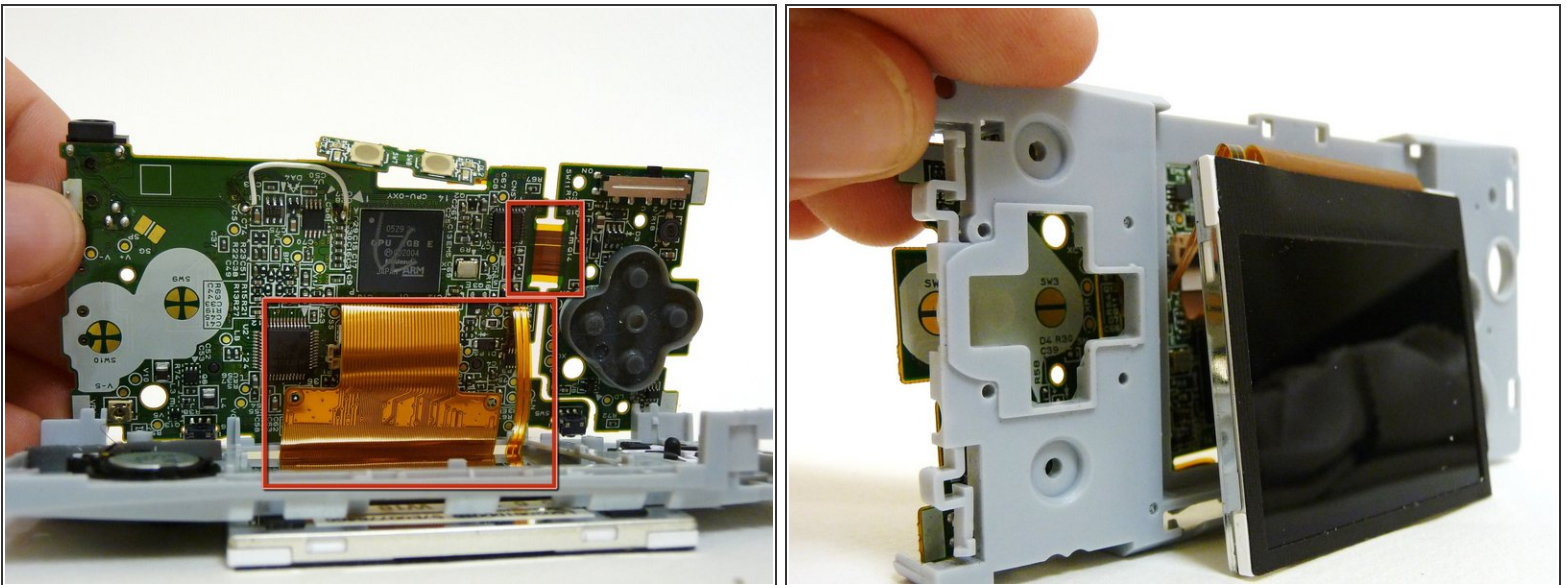


## Step 15



- Without the front case, you will be left with the motherboard and the plastic mount. The LCD screen is attached to the motherboard by a ribbon and can fall off the plastic mount.
- Using metal tweezers, grab the start/select board and slide it out gently.

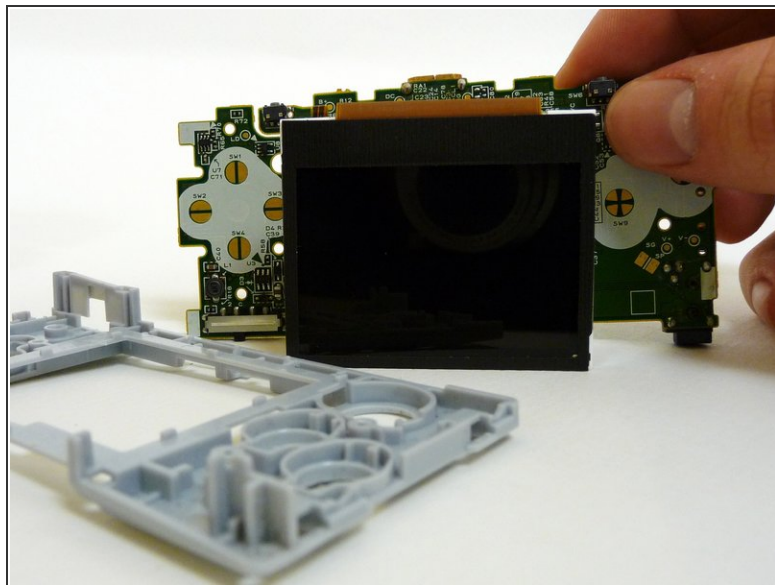
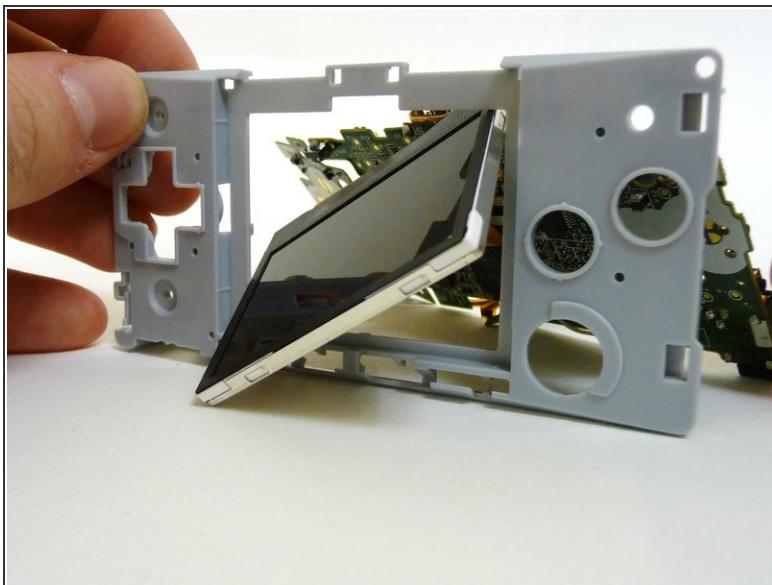
## Step 16



- Lift the entire motherboard assembly off the plastic guard.
- Take caution not to damage any of the gold ribbon cables on the motherboard.
- ⓘ The LCD screen is the only thing connecting the motherboard and plastic guard.

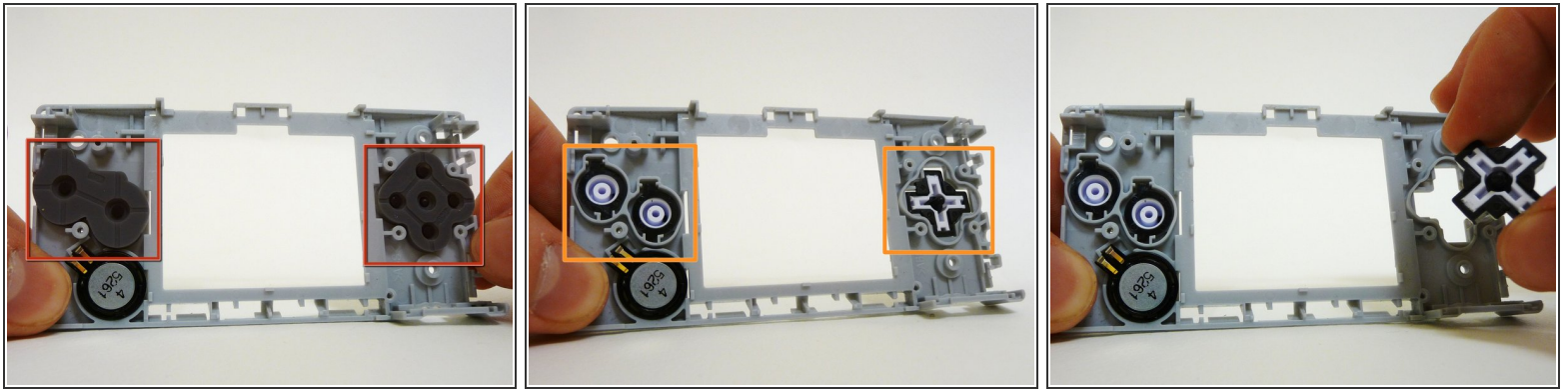


## Step 17



- To remove the LCD screen, carefully angle it until it is diagonal to the square hole in the plastic guard and slide it out.
- It is now possible to remove the entire motherboard assembly from the plastic guard.

## Step 18



- On the plastic guard, there are two rubber pads that cover the buttons. Remove them.
- ⓘ These pads rest on the motherboard and sometimes stick to it. If they do, peel them off.
- With the rubber pads off, you may use your fingers to remove the buttons to clean or replace them.
- ☑ When returning the buttons to the guard, they have to be put back in exactly the way they were pulled out.

To reassemble your device, follow these instructions in reverse order.