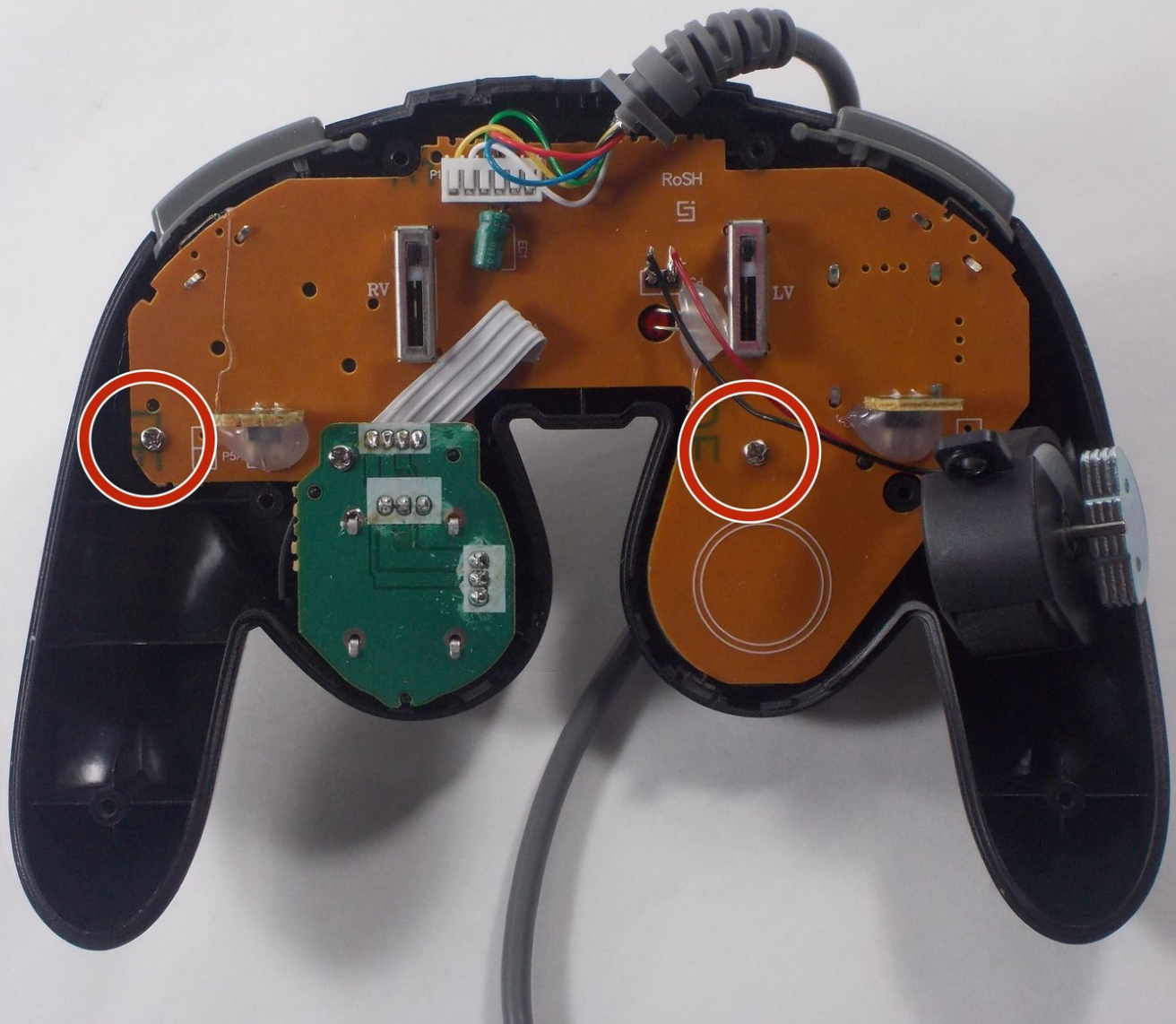




# GameStop GS3 GameCube Controller Buttons Replacement

This guide will instruct you on how to replace the buttons of the GameStop GS3 Gamecube Controller.

Written By: Andrew Gonsalves



---

## INTRODUCTION

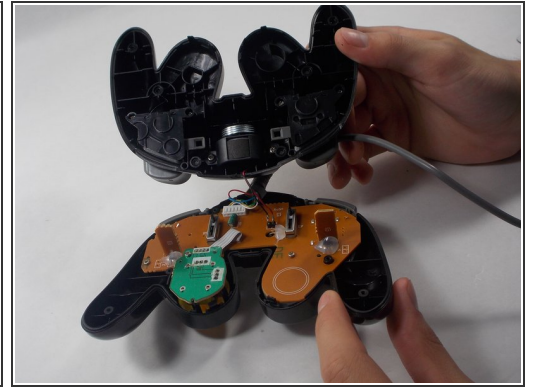
This guide will instruct you on how to replace the buttons of the GameStop GS3 Gamecube Controller.



### TOOLS:

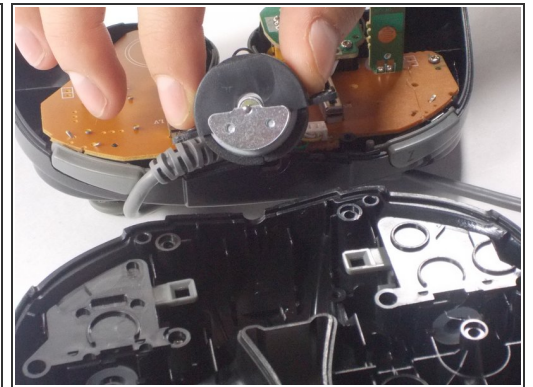
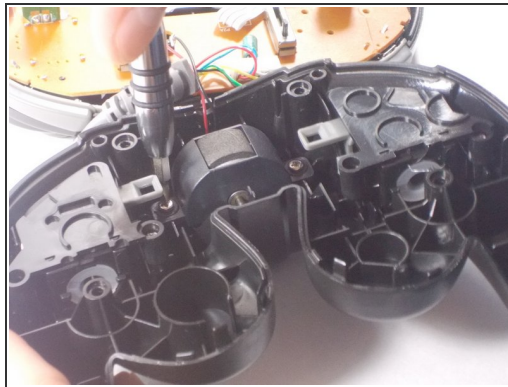
- [Mako Driver Kit - 64 Precision Bits](#) (1)
-

## Step 1 — Back Panel



- First, remove the 6 screws in the back panel and pull the back panel off.

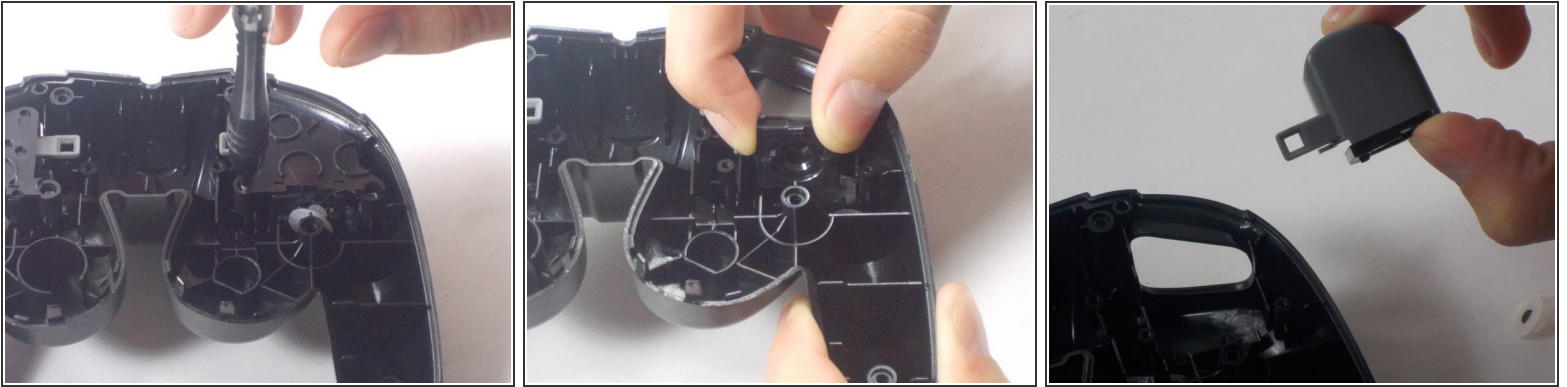
## Step 2



- Next, remove the rumble motor by unscrewing the 2 screws connecting it.

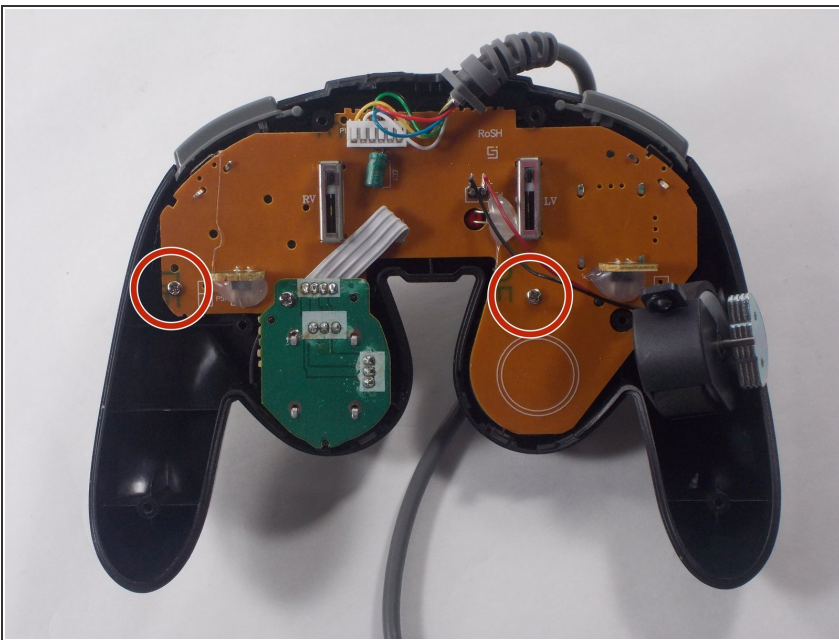


### Step 3



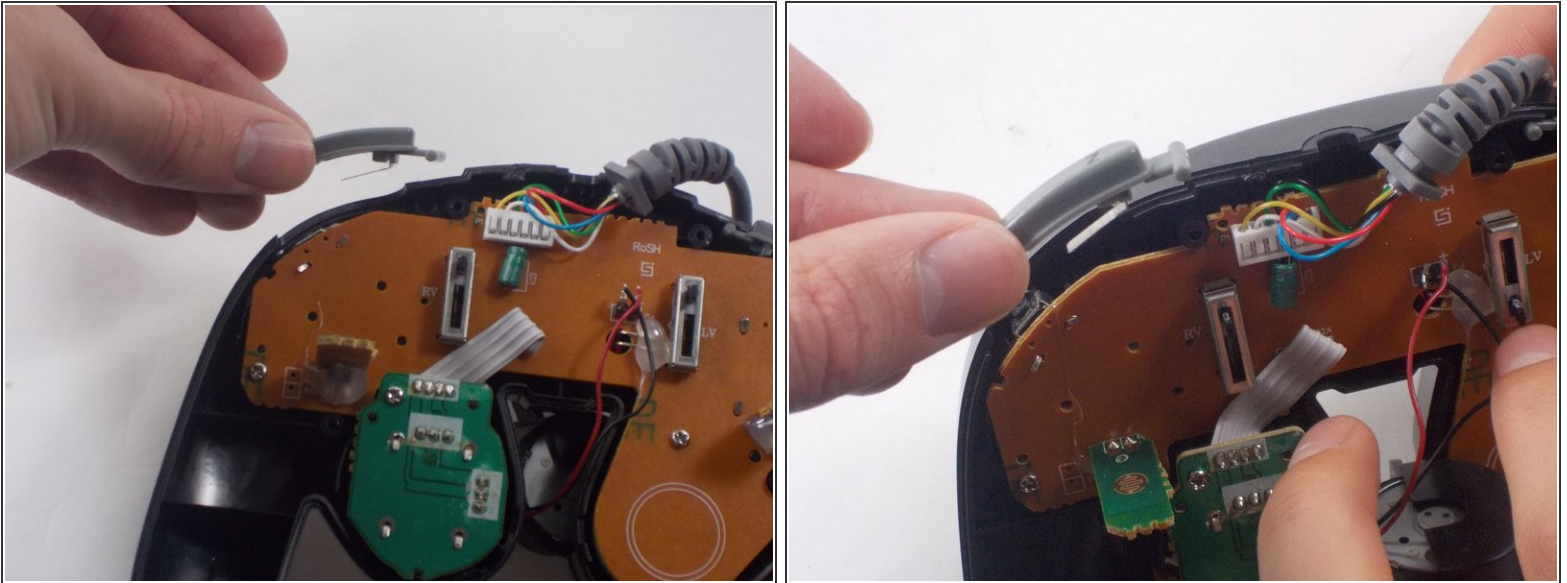
- Finally remove the screws holding in the right and left triggers. It's easiest to hold the trigger together as shown in the third picture. Remove both the left and right trigger, and then you have successfully removed your back panel.

### Step 4 — Buttons



- Hold the controller as shown in the picture so that you can remove the circuit board.
- The locations of screws to be removed in future steps are shown in red.

## Step 5



- Now that the back panel has been removed it should be easy to snap off the "Z" and "TURBO" buttons as shown in the images.

## Step 6



- Now begin removing the two screws on the motherboard so that you can remove the motherboard from the front cover.



## Step 7



- Now your controller front panel should look similar to this.
- You should now be able to remove the rubber backings on the buttons shown in red and snap them back in when you go to put the controller back together.

## Step 8



- Now remove the buttons and you should have what you see here.

To reassemble your device, follow these instructions in reverse order.