



GameStop GS3 GameCube Controller

Disassembly

How to fix stick drift on a GameStop GS3 GameCube Controller.

Written By: Brandon





TOOLS:

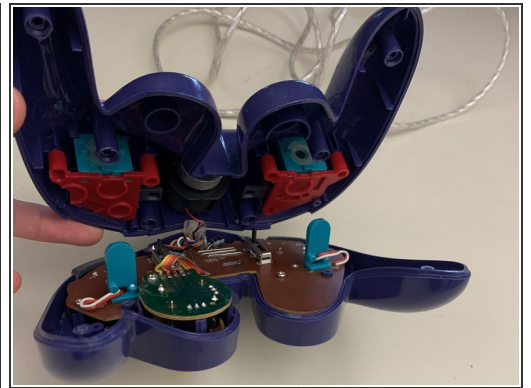
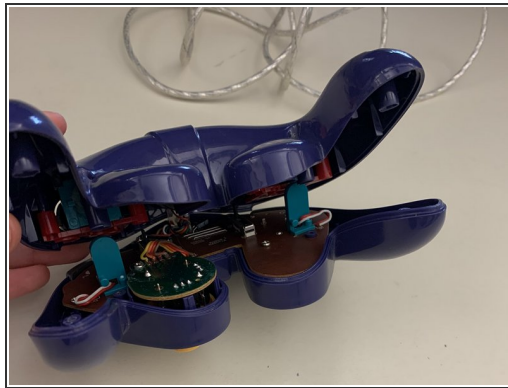
- [Phillips #0 Screwdriver](#) (1)
 - [High Content Rubbing Alcohol](#) (1)
 - [Tissue](#) (1)
-

Step 1 — Remove four screws on the back of the unit



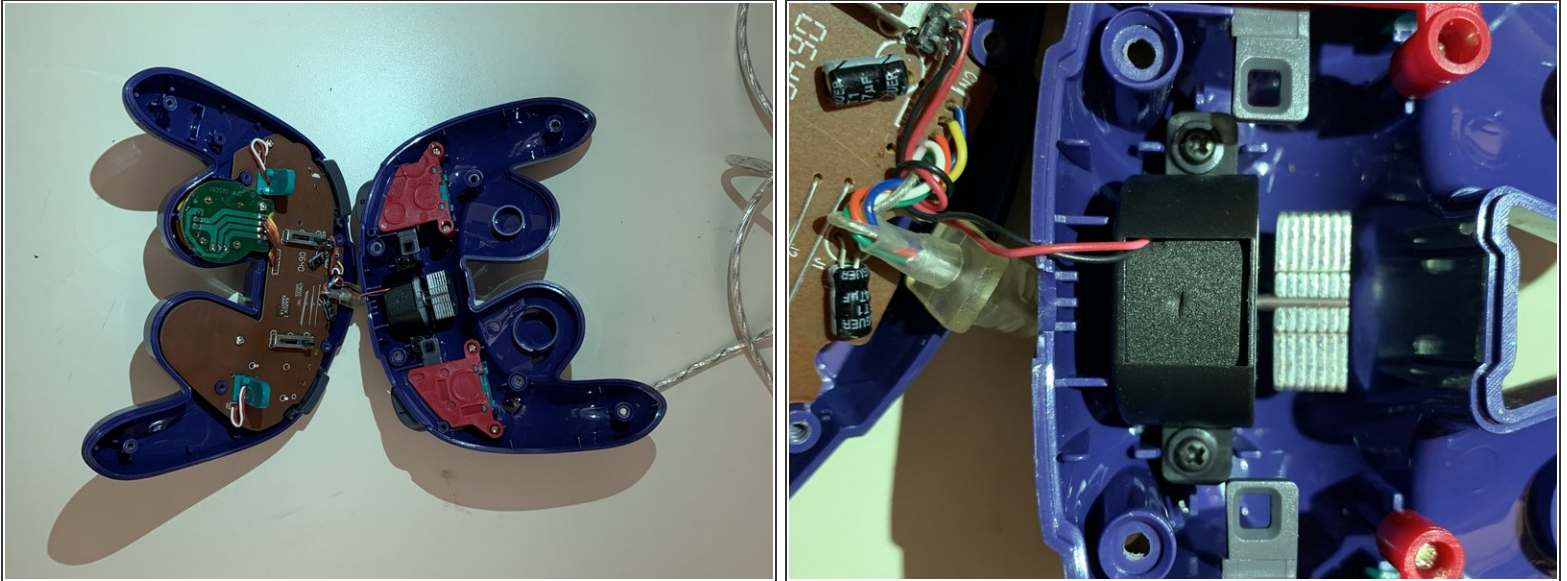
- Turn the controller over so the back is facing upwards.

Step 2



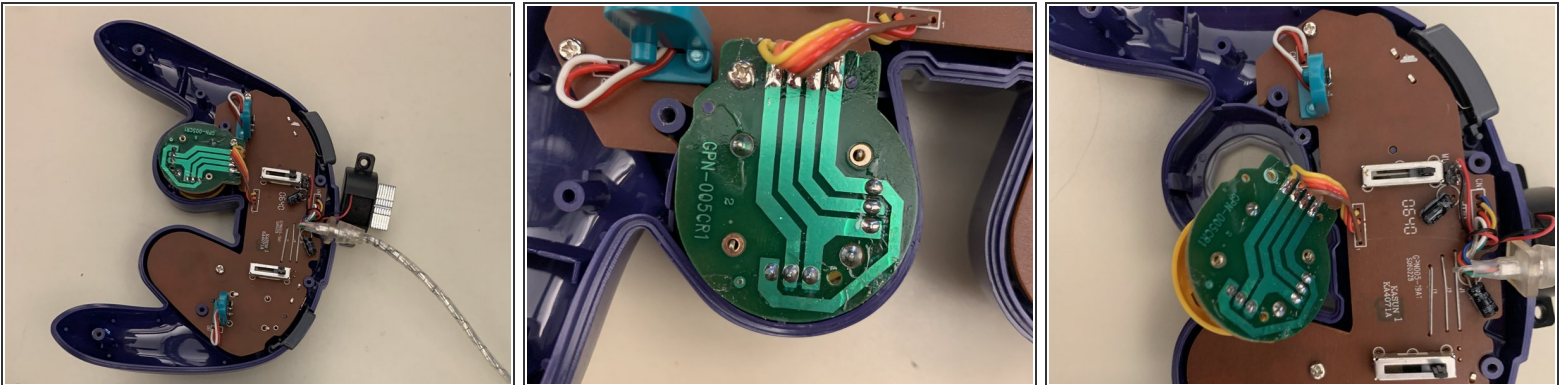
- Carefully pry open the controller. Ensure that the rumble assembly stays intact.

Step 3



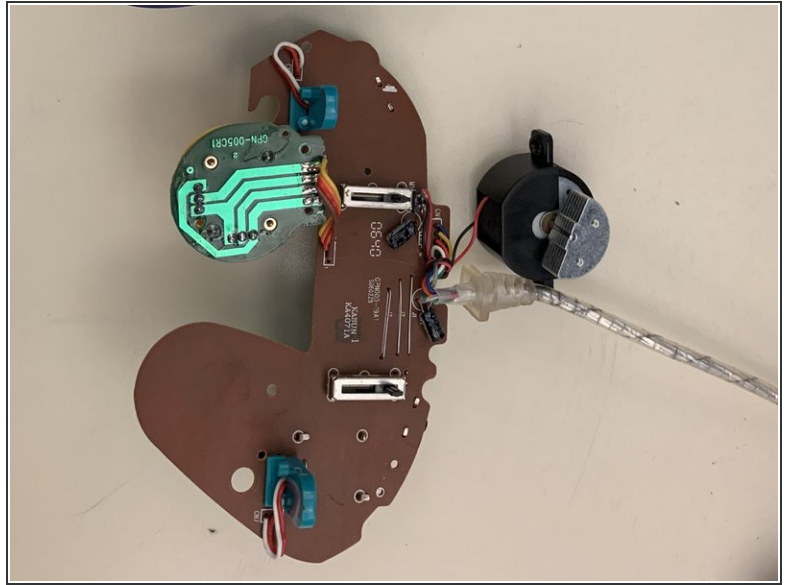
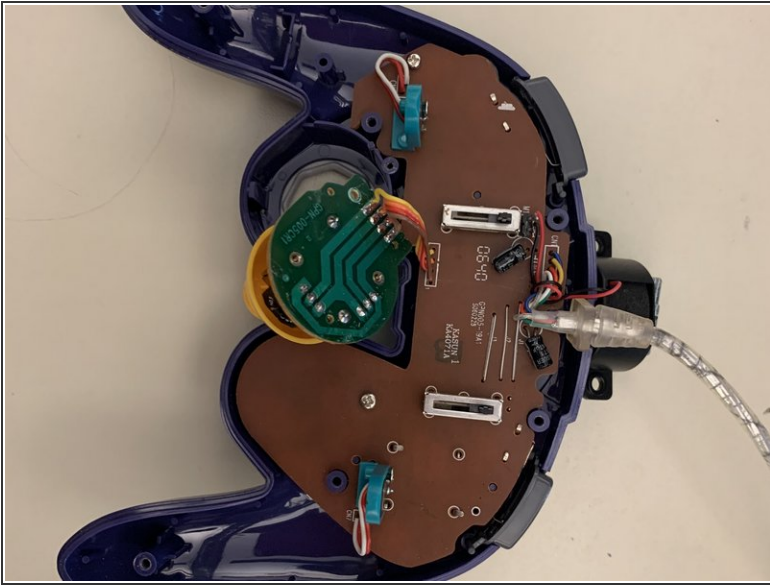
- Locate the two black screws attached to the rumble assembly. Remove them and separate the motor from the back casing.

Step 4



- Locate the green pcb on the main assembly. Remove the silver screw on the green pcb to separate it from the controller casing.

Step 5



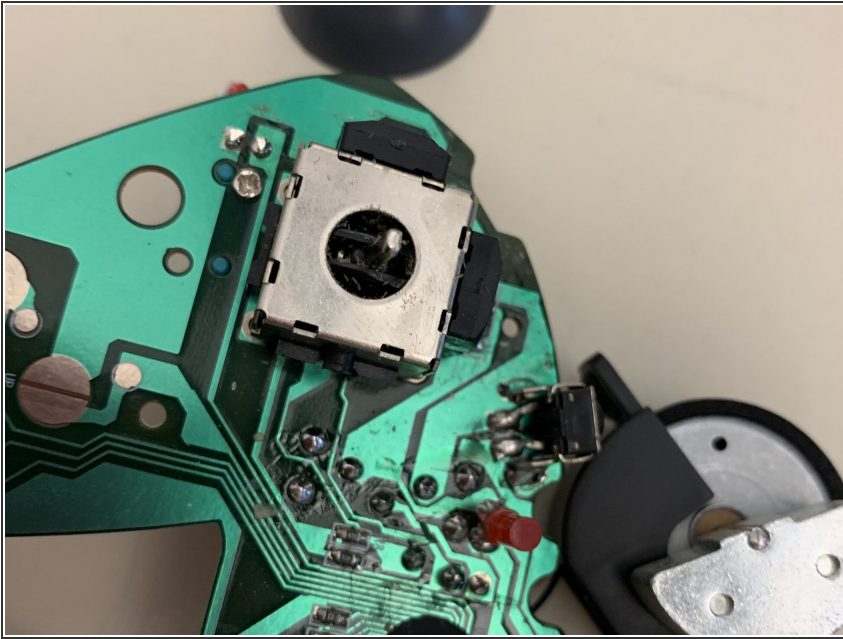
- Locate the two silver screws on the brown pcb. Remove them and carefully pry both pcbs off of the controller casing. Ensure that the buttons on the controller casing remain in place.

Step 6



- Firmly pry the plastic part of the problematic joystick off of the pcb. Take care to ensure that the pcb remains intact.

Step 7



- Examine the joystick module on the pcb. Stick drift is a common problem and is usually caused by dirt and debris inside the metal casing. Use rubbing alcohol and a tissue to clean the affected area.

To reassemble your device, follow these instructions in reverse order.