



GameStop GS3 GameCube Controller Motherboard Replacement

How to open up the controller and remove the motherboard.

Written By: John Harrison

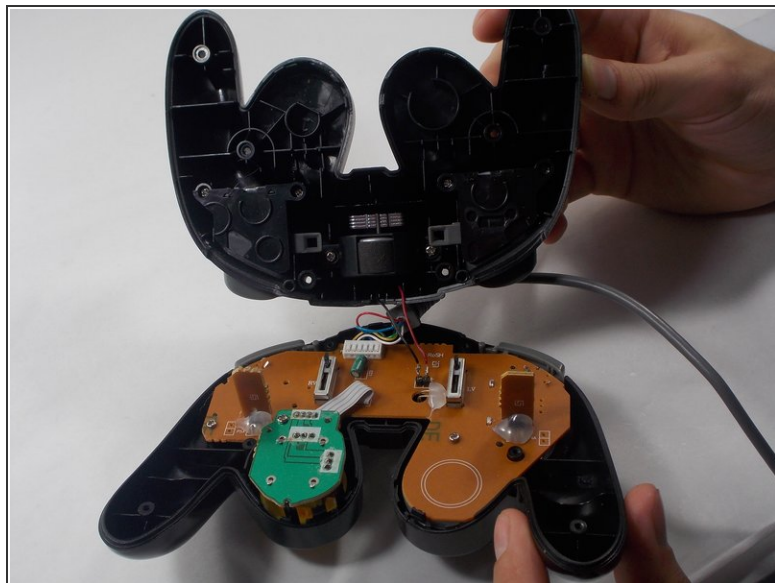
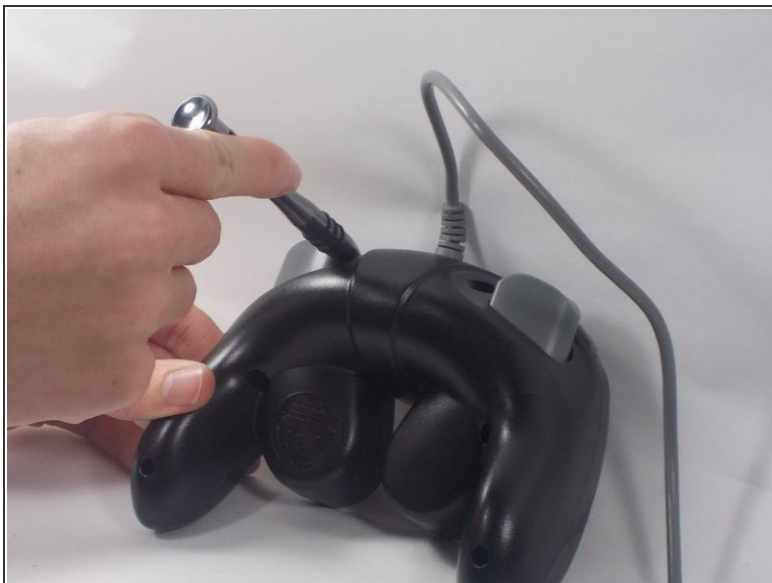




TOOLS:

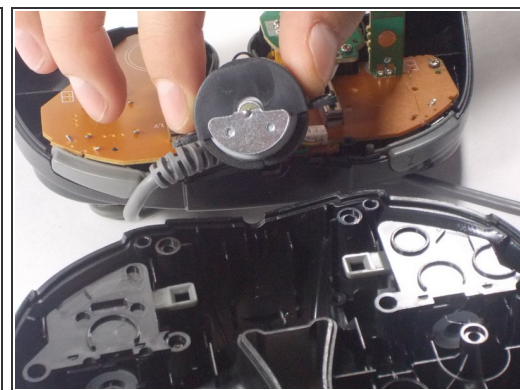
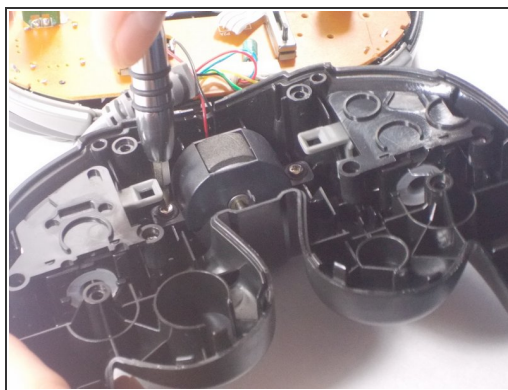
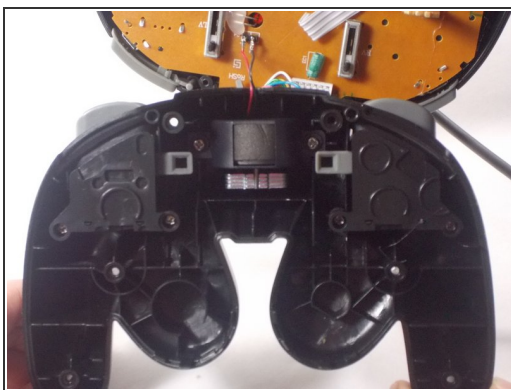
- [Mako Driver Kit - 64 Precision Bits](#) (1)
-

Step 1 — Motherboard



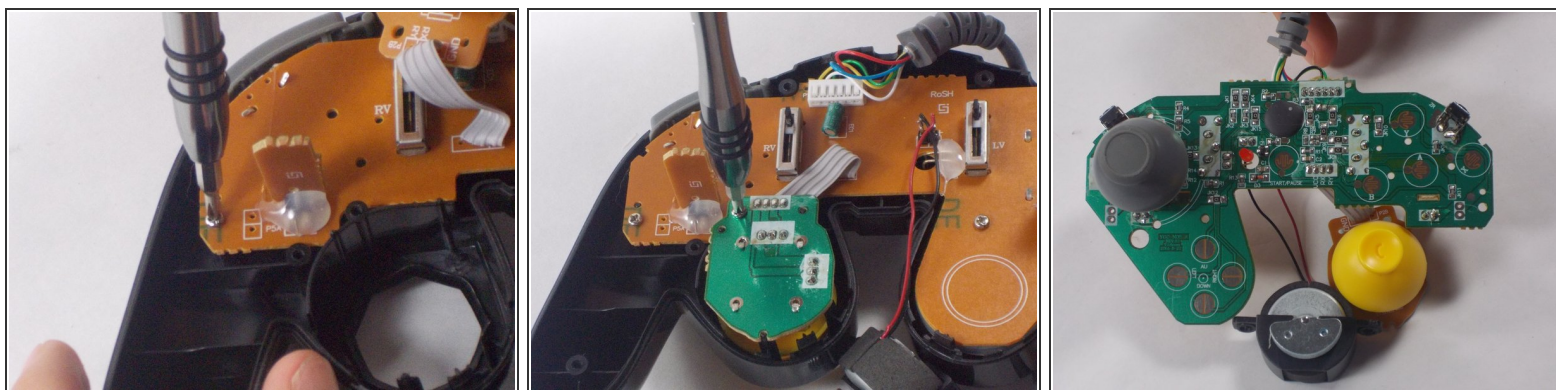
- Open the controller by unscrewing the screws located on the back panel
- Separate the two halves of the controller.

Step 2



- Remove the rumble-pack by unscrewing the screws located on on either side.
- Remove the rumble pack to fully separate the two halves of the controller

Step 3



- Disconnect the motherboard from the front half of the controller by unscrewing the small screws around its perimeter.
- The motherboard should separate and lift right out from the front half.

To reassemble your device, follow these instructions in reverse order.