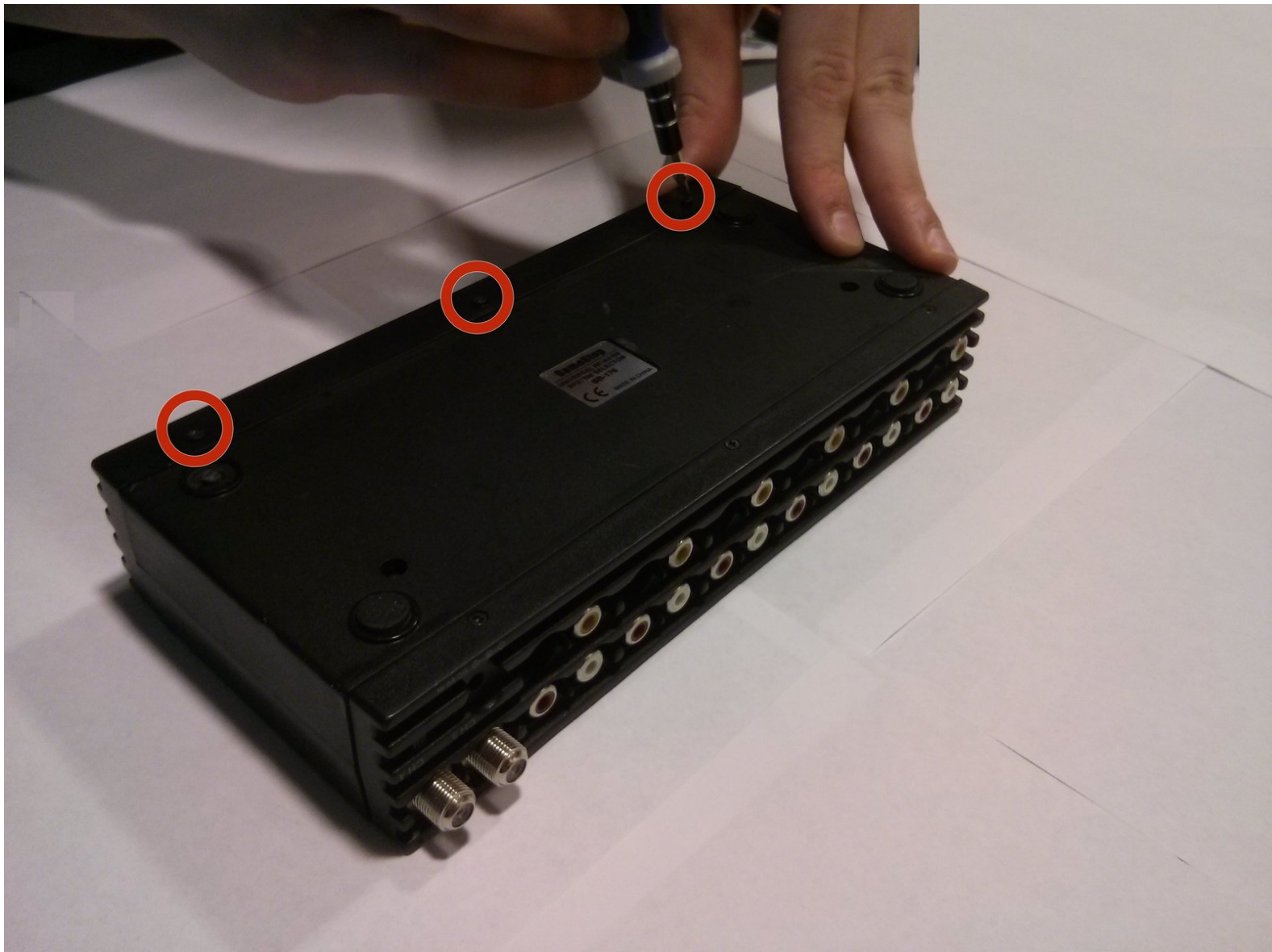




GameStop Universal System Selector Mother Board Replacement

This guide will walk the reader through the replacement of the motherboard for an GameStop Universal System Selector.

Written By: Jared

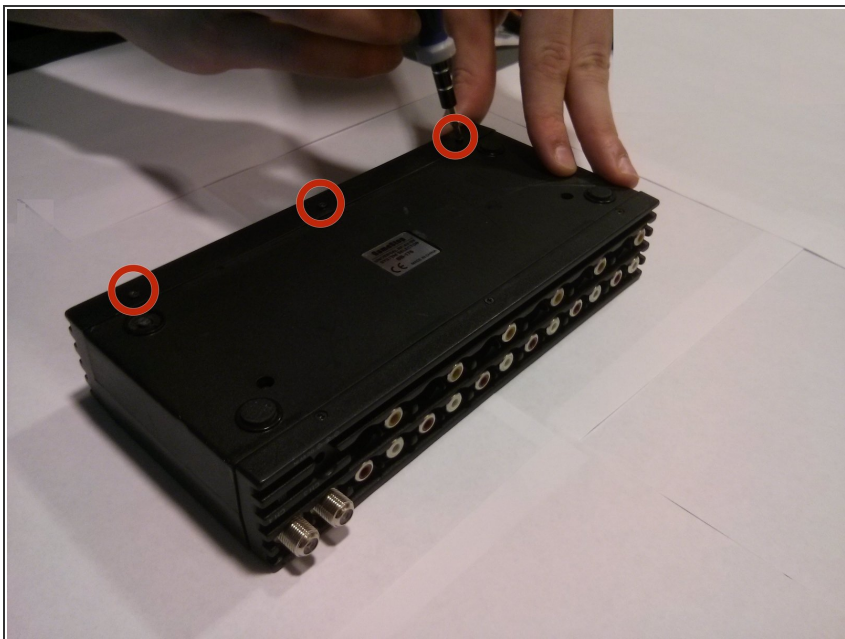




TOOLS:

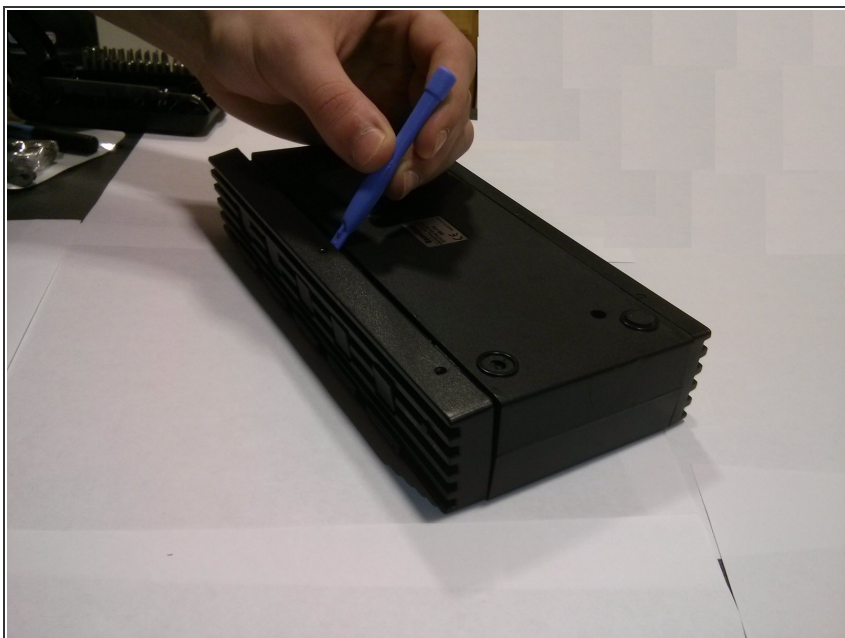
- [Phillips #00 Screwdriver](#) (1)
 - [Large Needle Nose Pliers](#) (1)
 - [Soldering Iron](#) (1)
 - [Solder](#) (1)
-

Step 1 — Circuit Board



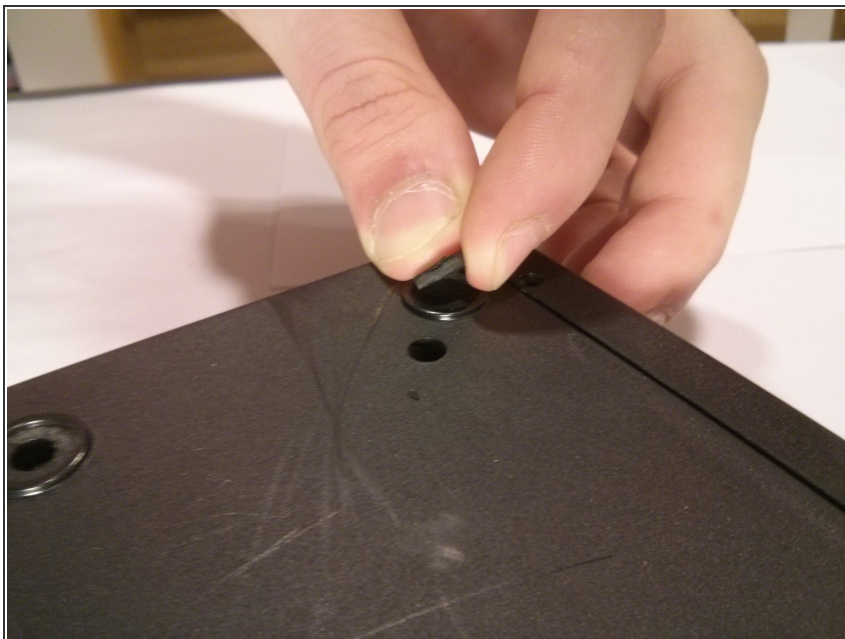
- ⚠ Disconnect the DC 6V IN power cable from the device.
- Remove the 3 front panel screws on the bottom of the device.

Step 2



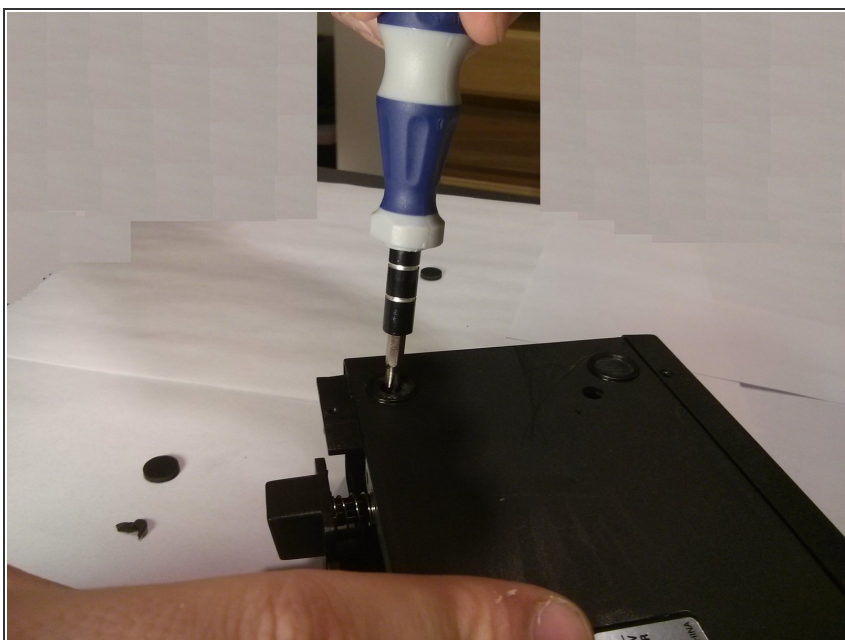
- Carefully pry off the front panel of the device.

Step 3



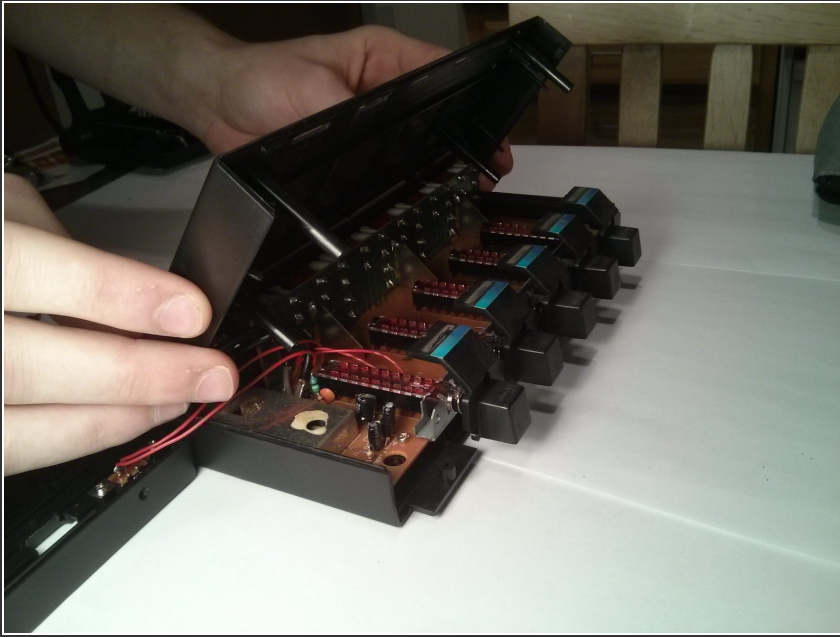
- Pop off the front two rubber footings from the bottom of the device, revealing 2 hidden main panel screws.

Step 4



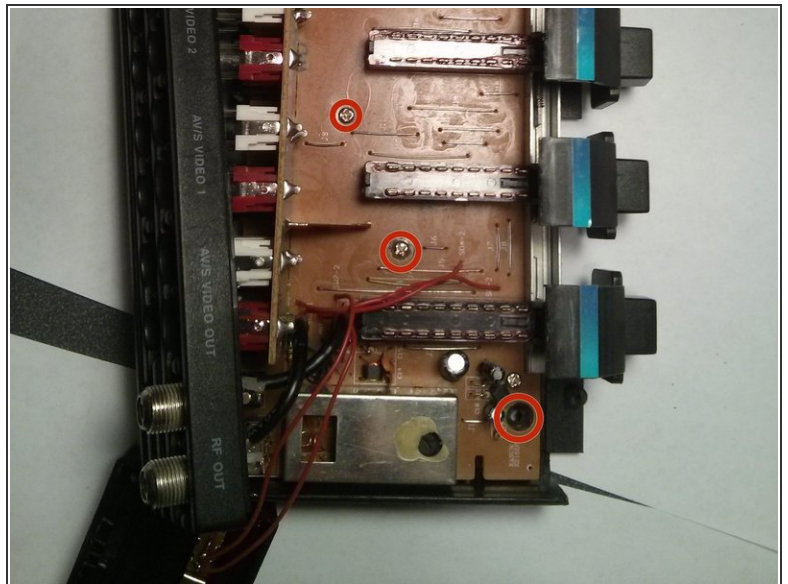
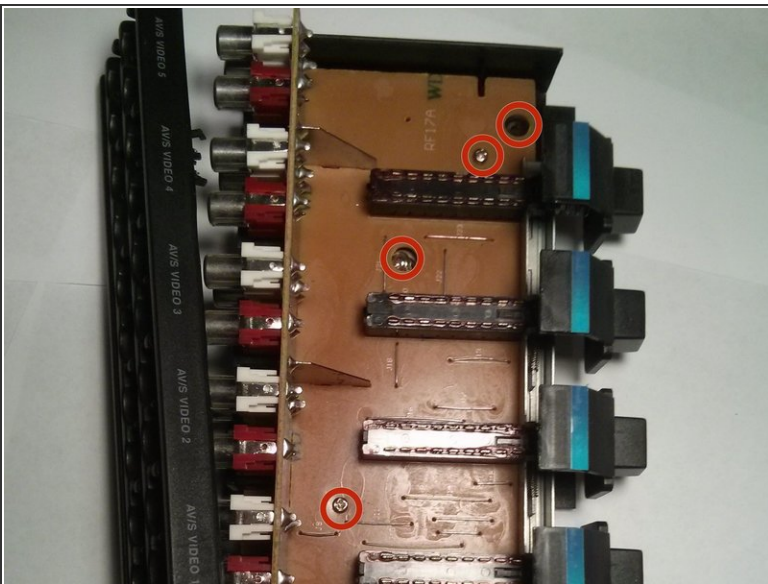
- Unscrew the remaining 7 screws from the bottom of the device.

Step 5



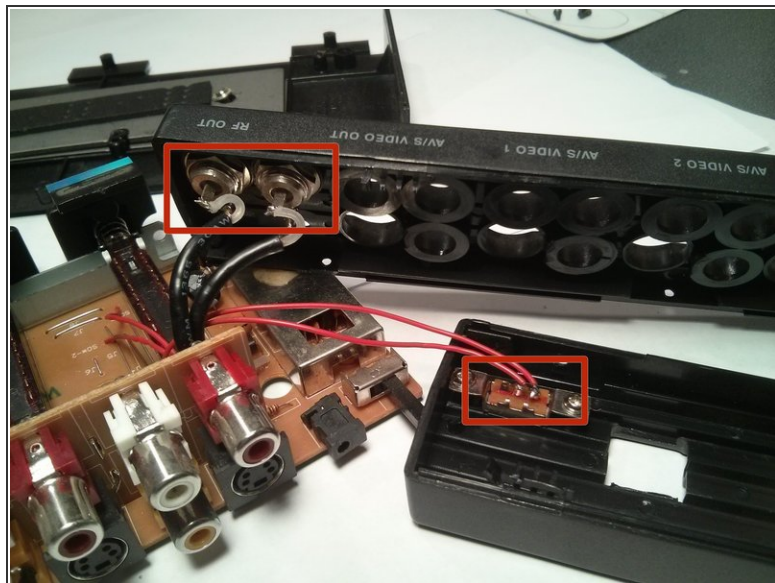
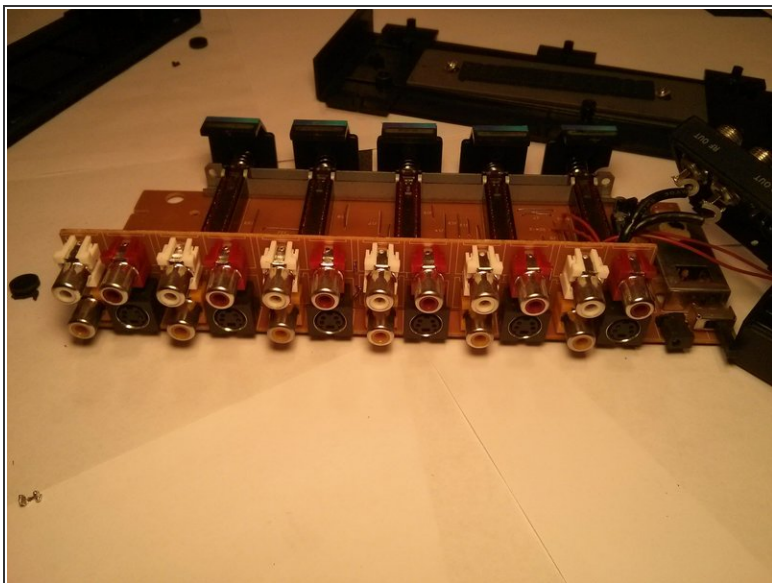
- Position the device so that its bottom is on your work surface, and its top is facing up.
- Remove the lid of the device.

Step 6



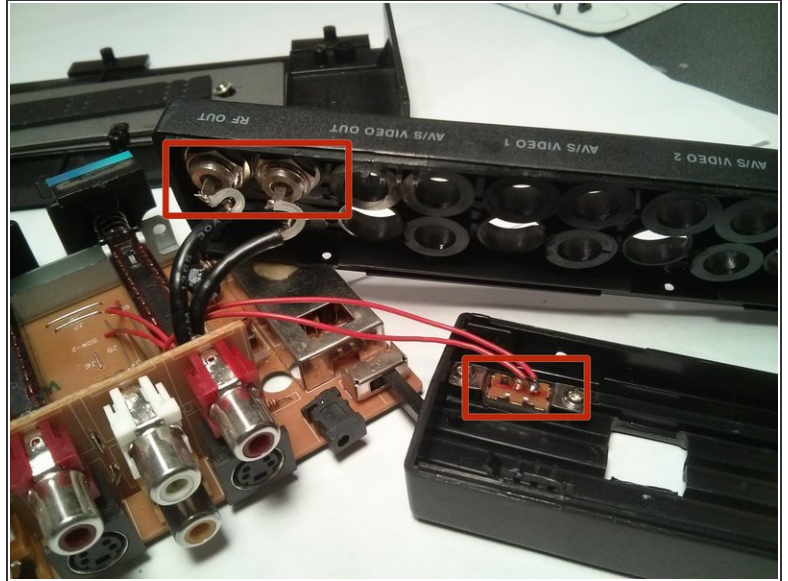
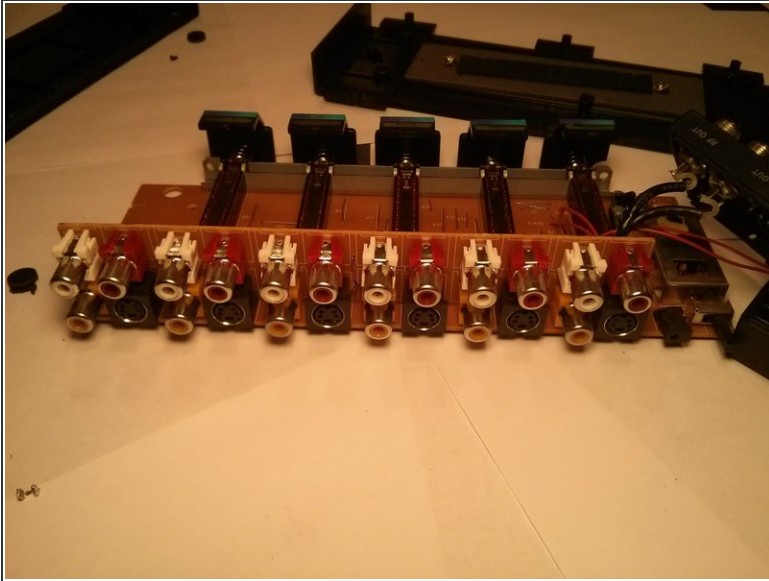
- Remove all six screws from the circuit board.

Step 7



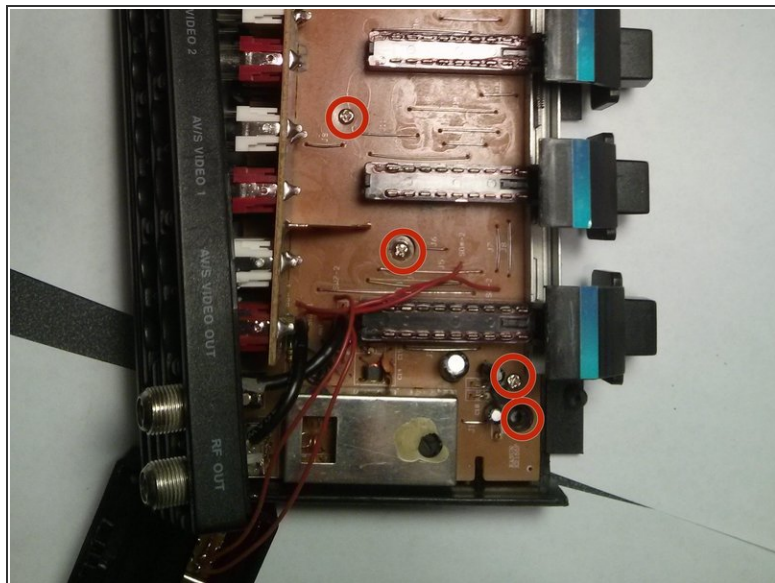
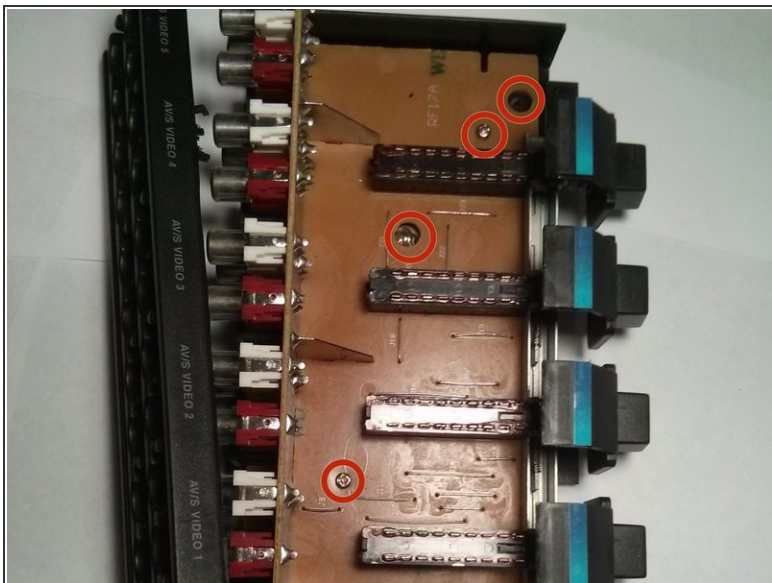
- Now the circuit board should be able to be removed from the casing of the device except for two wires that are attached to the casing.
- Detach the black wires from the casing, by pulling them out of the cable ports.
- Using pliers or a similar tool, detach the red wires from the small circuit board that is attached to the case of the device.

Step 8



- Now it's time to replace the old circuit board with the new one.
- Push the two black wire's ends into the cable ports on the back panel of the casing.
- Solder the ends of the two red wires onto the small circuit board on the front panel of the device.

Step 9



- Correctly place the circuit board back into the case of the device and replace all six screws on the circuit board.

Step 10



- Snap the front and back panels back into place and reassemble the device.
- Now replace all the screws on the bottom and you are done!
- ⓘ If you want to put the rubber footies back on, try gluing them.

The device should now be working properly. If the device does not function properly the replacement motherboard may be faulty, or the wires may not have been properly connected.