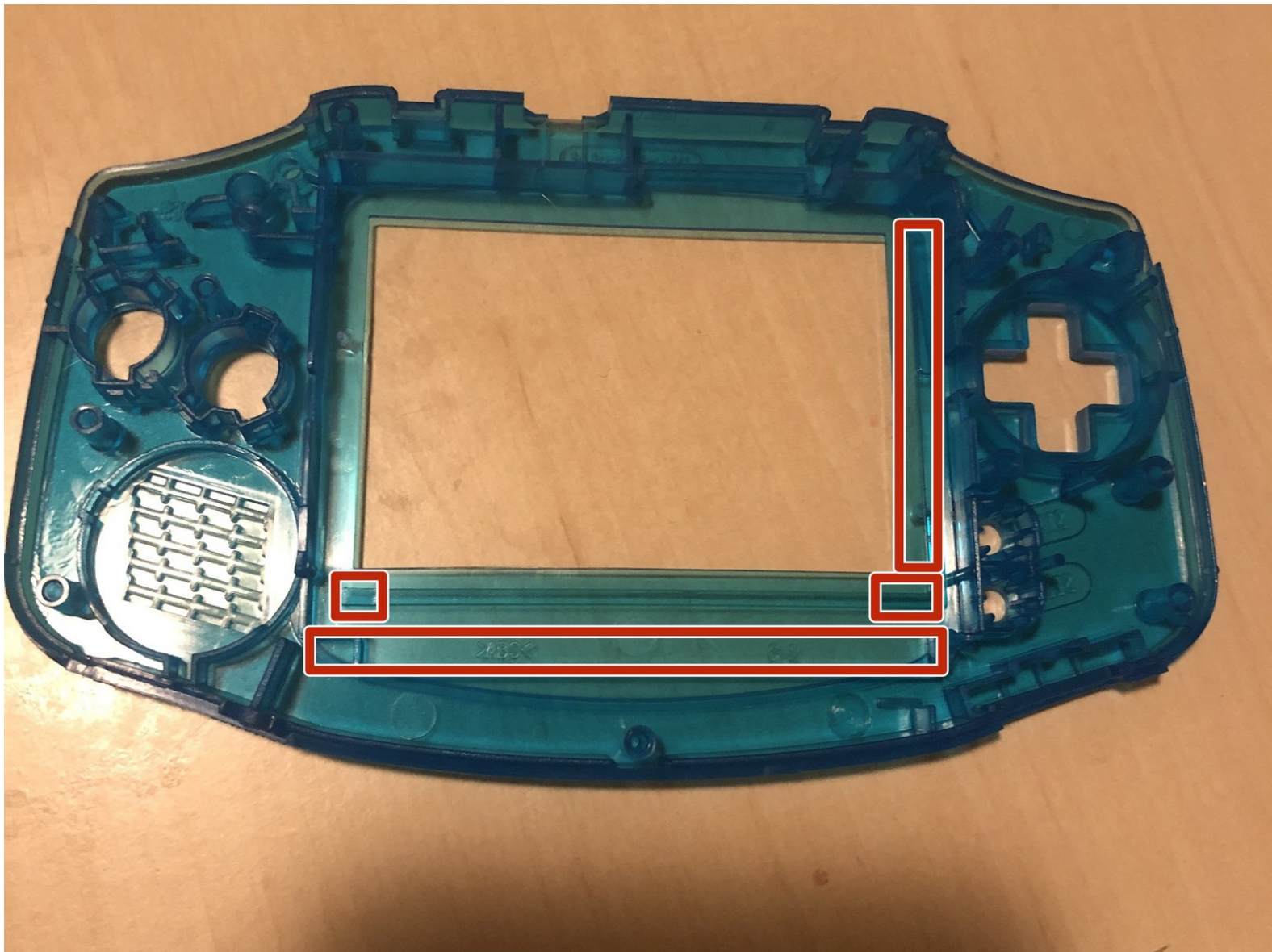




Gameboy Advance AGS-101 Blacklight Mod

Blacklight mod for the Gameboy Advance.

Written By: koppie007



INTRODUCTION

Hi!

Just created a guide on how to install a AGS-101 screen in the Gameboy Advance.

It's not hard to do and it's pretty neat to have blacklight screen build in.

Hopefully you will enjoy doing this with using my guide!

Good luck!



TOOLS:

- [Phillips #00 Screwdriver](#) (1)
 - [Tri-point Y0 Screwdriver](#) (1)
 - [Tweezers](#) (1)
-

Step 1 — Game Boy Advance Teardown



- Remove the back battery cover by pinching down on the tab and pulling outward.

Step 2



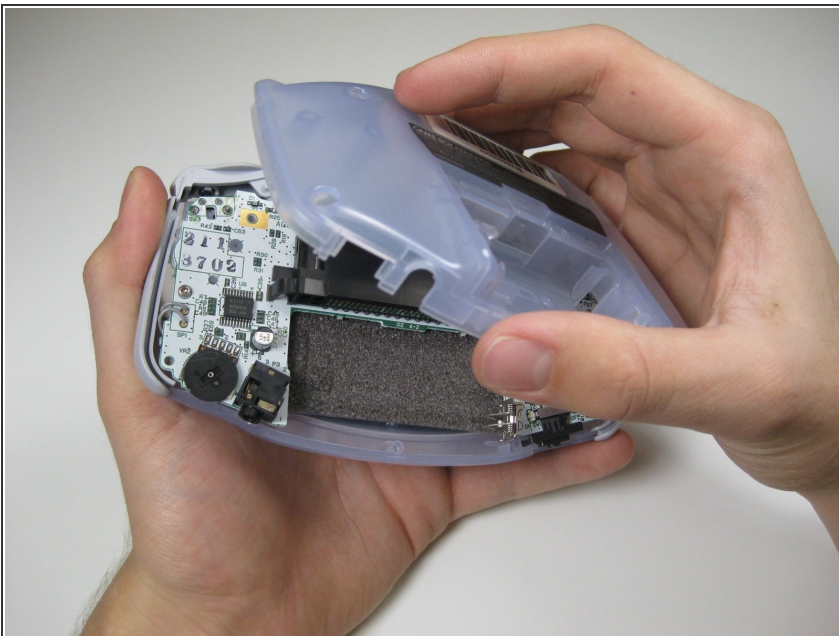
- Remove the six back panel screws using a Y1 screw driver.

Step 3



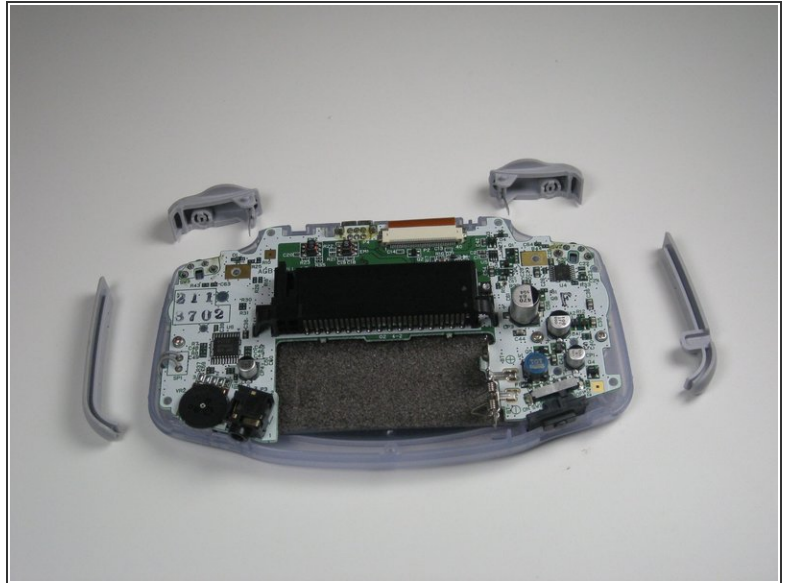
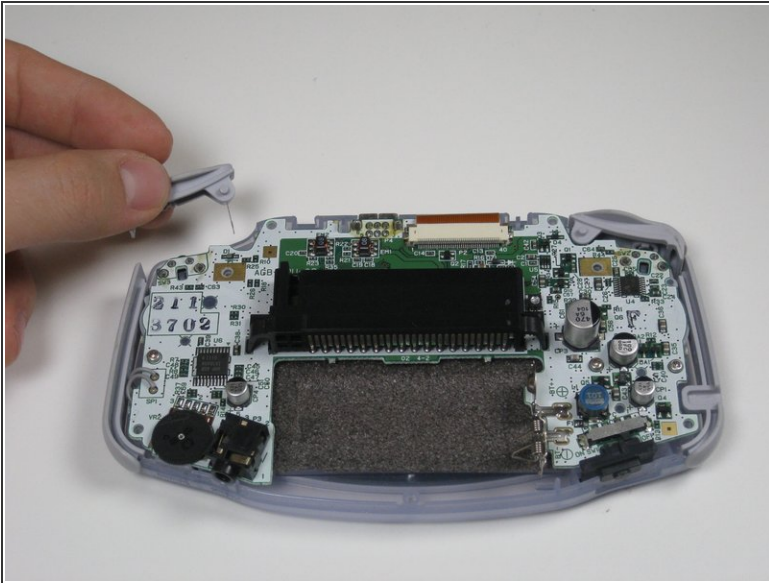
- Remove bottom back panel screw with a Phillips #1 screw driver.

Step 4



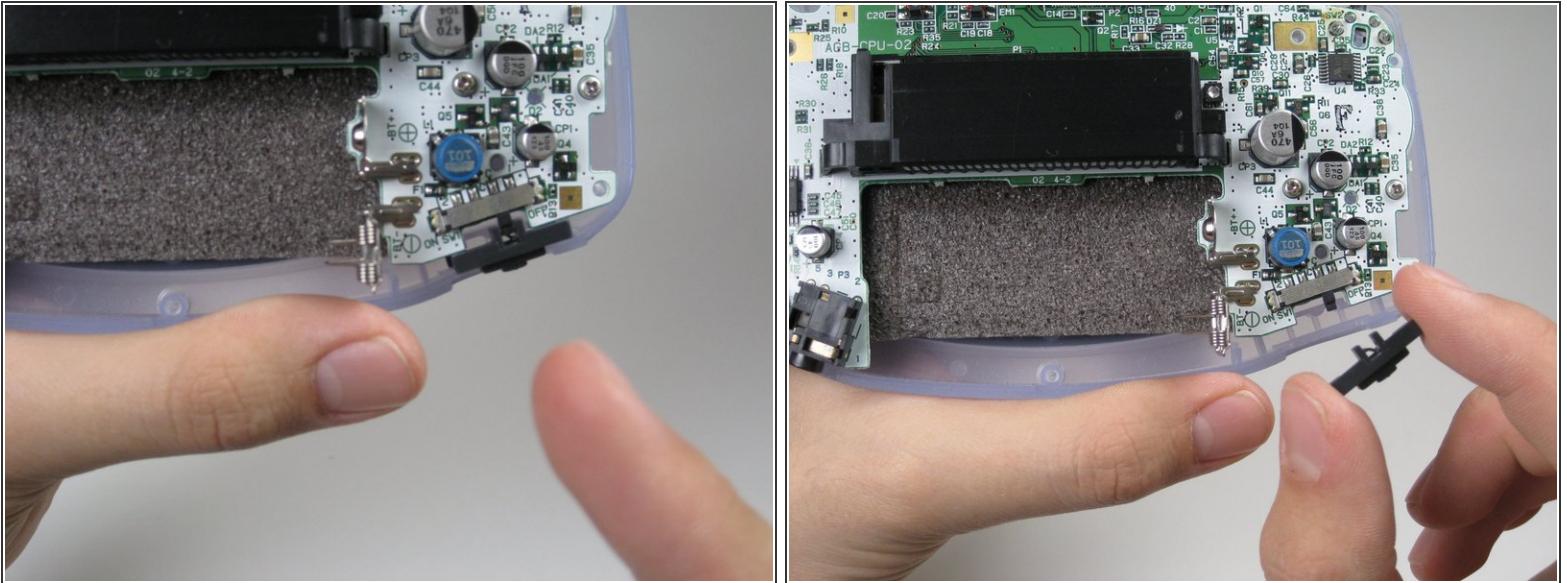
- Remove the back panel by pulling away with one hand and the front secured in the other hand.
- ⚠ Beware of right and left triggers, the right and left panels, and the power switch falling off as the back panel is removed.

Step 5



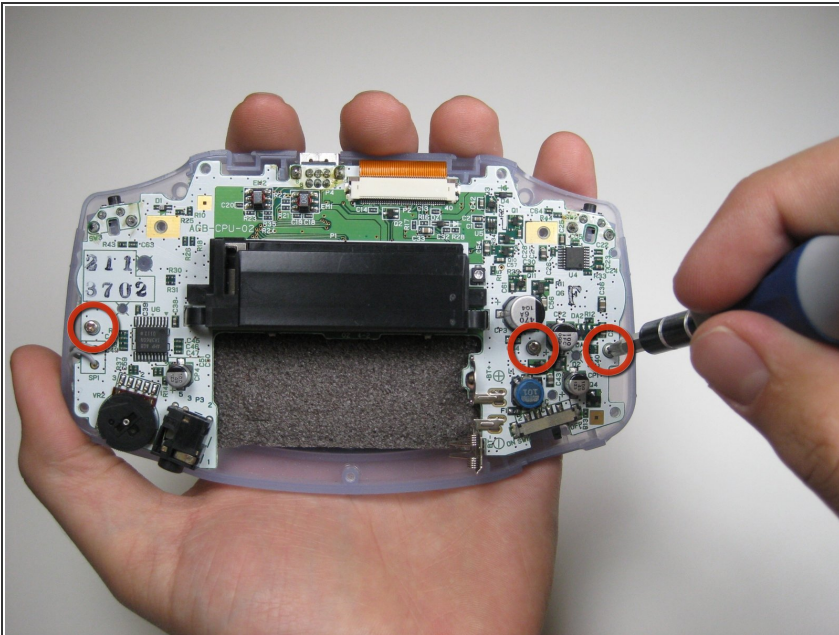
- Remove left and right triggers by lifting and pulling them away from the system.
- Do the same for side panels.
- ⓘ For finicky or jammed triggers only. Adjust and correct triggers and reassemble. Most jammed triggers are caused by buttons misplaced or jammed in its enclosure.

Step 6



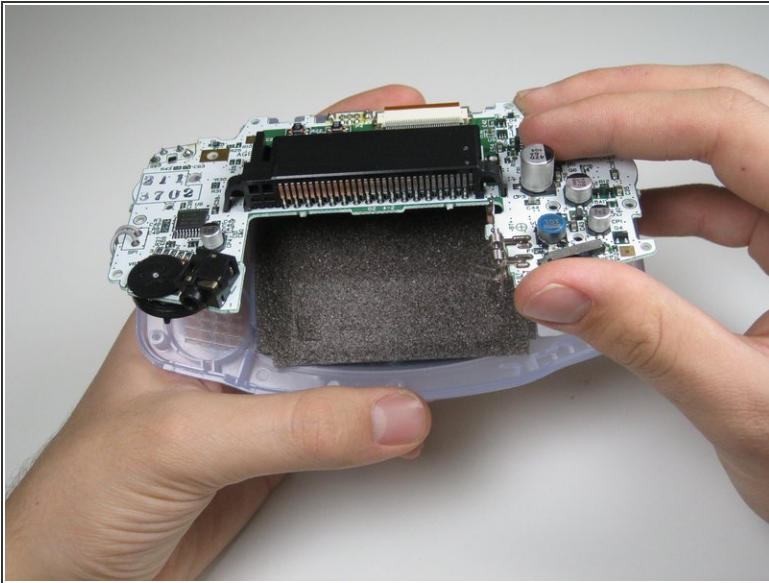
- Remove the gray On/Off Switch by pulling up and away from the unit. Replace with another switch if necessary.

Step 7



- Remove the three screws on the circuit board with a Phillips #1 screw driver.
- ⓘ The last screw on the right is not included on some Game Boy Advance systems.

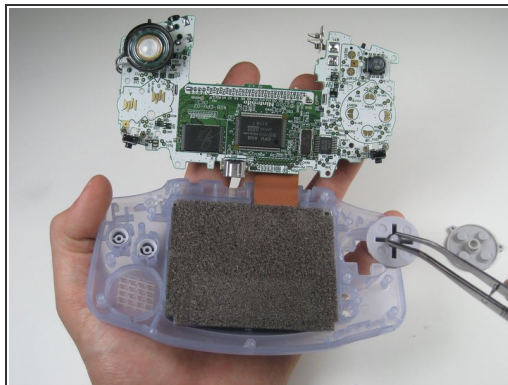
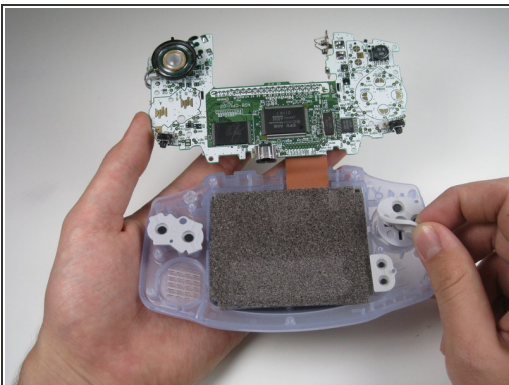
Step 8



- Pull circuit board away from the front panel by pulling up at the bottom of the circuit board, keeping the top ribbon still connected.

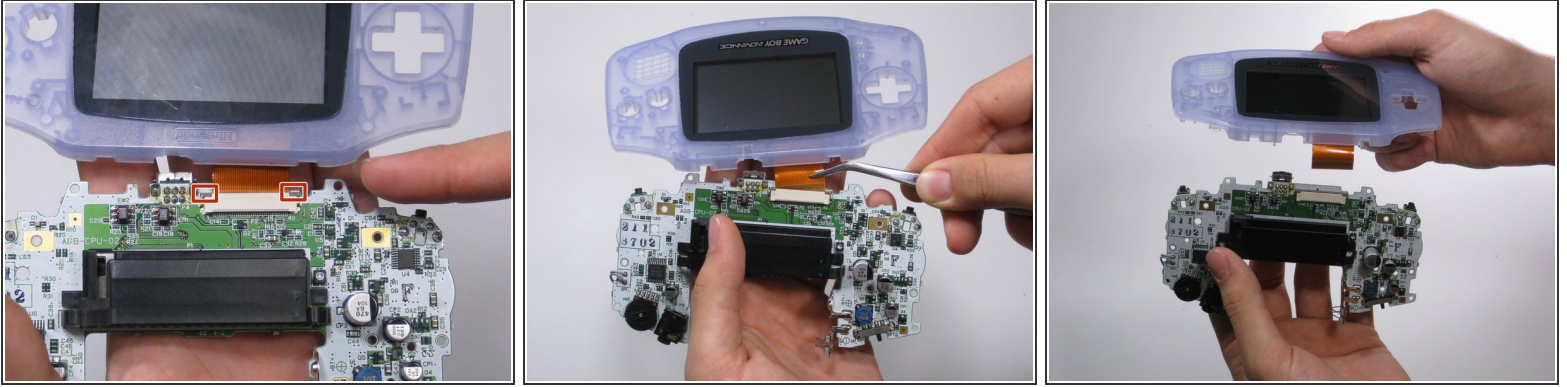
⚠ Beware not to damage the top ribbon by pulling up gently.

Step 9



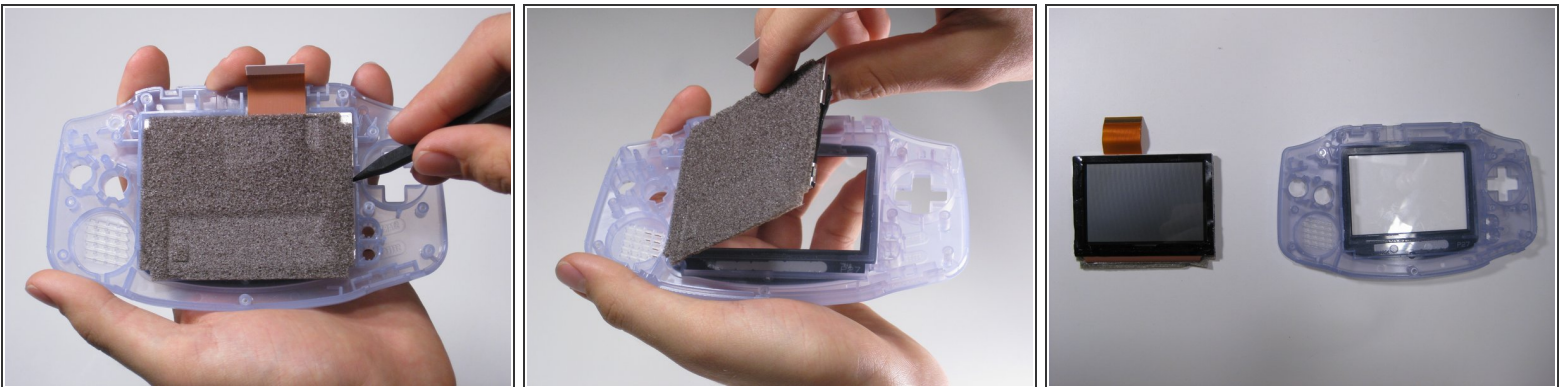
- Remove the rubber button pads from their pockets.
- Remove the plastic buttons and the D-pad from beneath the rubber pads with tweezers or by hand.

Step 10



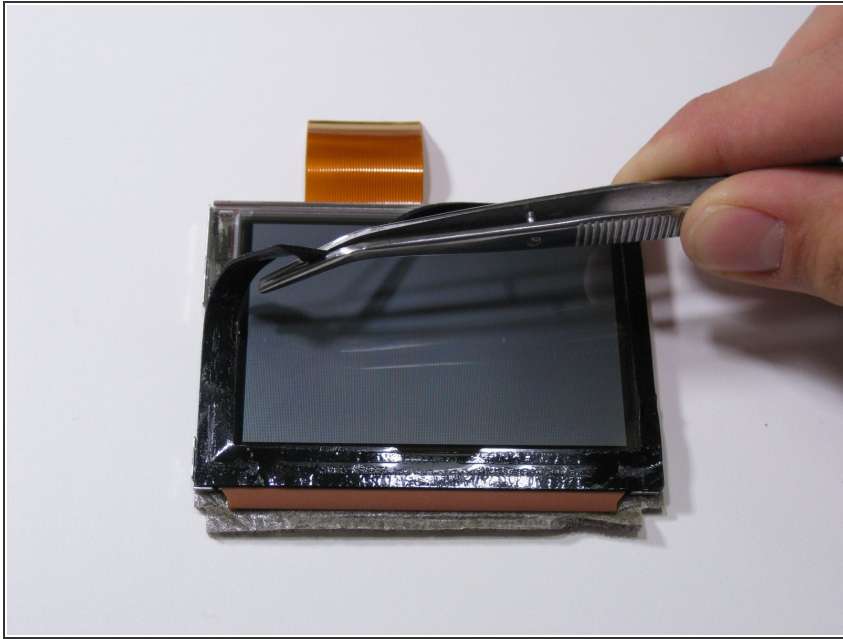
- Use a spudger/tweezers/fingernail to unlatch the LCD ribbon port by pulling the grey tabs on the sides upwards (towards the top edge of the PCB).
- Once the LCD ribbon port has been unlatched, the LCD ribbon should very easily slide out and can be removed with zero force using fingers or tweezers.

Step 11



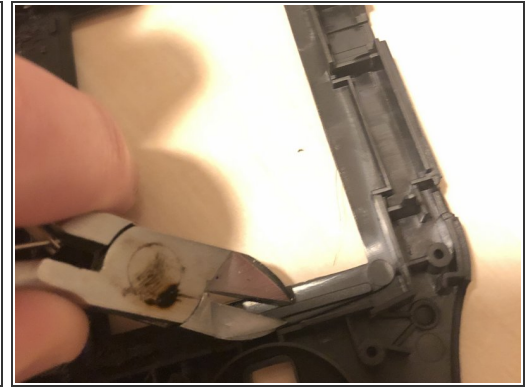
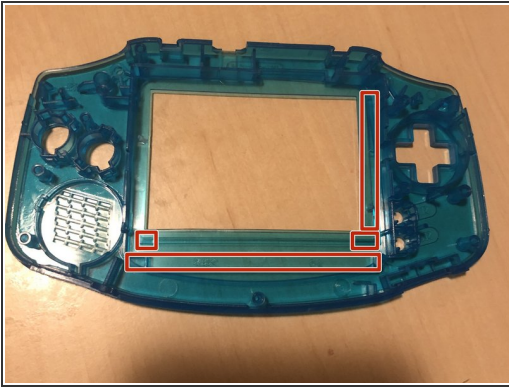
- Use the spudger to lift the screen from the front panel. Place the spudger in the space directly left of the D-pad.
- ⚠ The screen and the front panel is connected by a black tape that could rip if not removed carefully.

Step 12



- Use the tweezers to remove the black tape if needed.

Step 13 — Cut the plastic from the shell



- Cut the plastic from the shell, aligned with red markers.
 - Use a cutter to cut the big pieces of plastic.
 - Use the cutter again to cut some plastic from the shell. This is required for the LCD to fit properly.
- i** Only cut the plastic that sticks out! It's possible that the red markers are not 100% accurate.
- ★** First things first, there are 2 GBA models. 32 pin motherboards and 40 pin motherboards, before you order anything, make sure which model you have. The GBA's starting with a 0 is a 40 pin, if it start with a 1 it's a 32 pin. Please advise Google if you are not sure which model you have.

Step 14 — Make it flat



- Use a knife or a flathead screwdriver to flatten it. Make it as flat as possible and take all the plastic away.
- Do this for all sides which you have cut before.

Step 15 — Fit the screen



- Inspect if everything is cut and if everything is flat. If it looks good, then proceed!
 - Don't worry about the front. Most of the times the front is still good, the cutting at the back side won't be visible when everything is in. But please check before you proceed.
 - Test if the screen sits flush.
- ⚠ Make sure that the screen fits good. There is not a lot of space in the shell. If you proceed anyway, you could damage the screen. Cut some more plastic if needed.

Step 16 — Attach lens



- Place a new lens in the shell.
- It should look like the 2nd picture. It should be attached with the tape that's already on the lens. Make sure that the lens is clean and not damaged!

Step 17 — Place the screen in the shell



- Now take the plastic foil from the screen.
- Put the screen in the shell.
- ⓘ You can attach some double sided tape in the corners of the screen to make it fit easier (make sure it's thin) it's *not* required. Remember not to touch the screen when the plastic security foil is removed.

Step 18 — Place the buttons



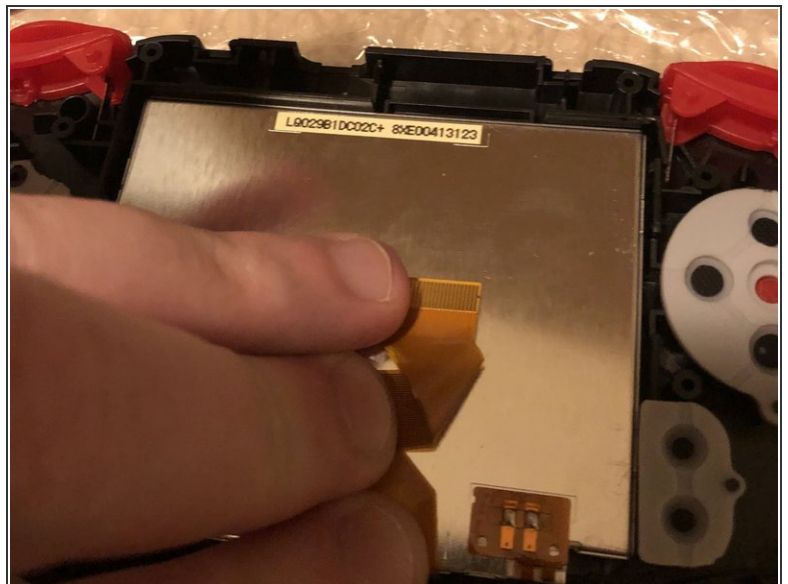
- Place the buttons in the shell.
- Place the start/select rubber in the shell.

Step 19 — Place rubbers



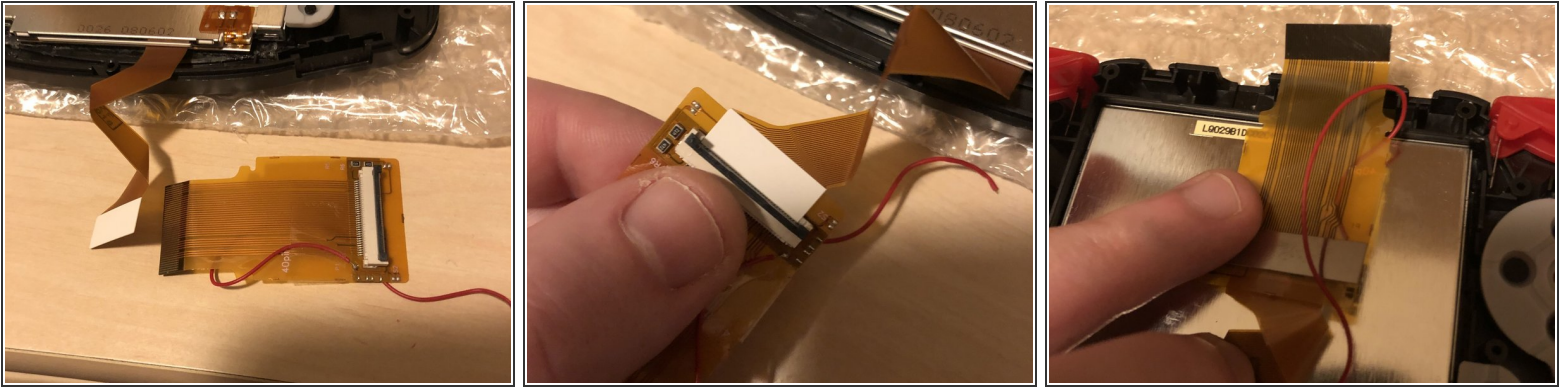
- Put the rubbers in.
- You can also place the L/R buttons in already, but it won't be a problem to do this later if you want.

Step 20 — Fold the LCD cable



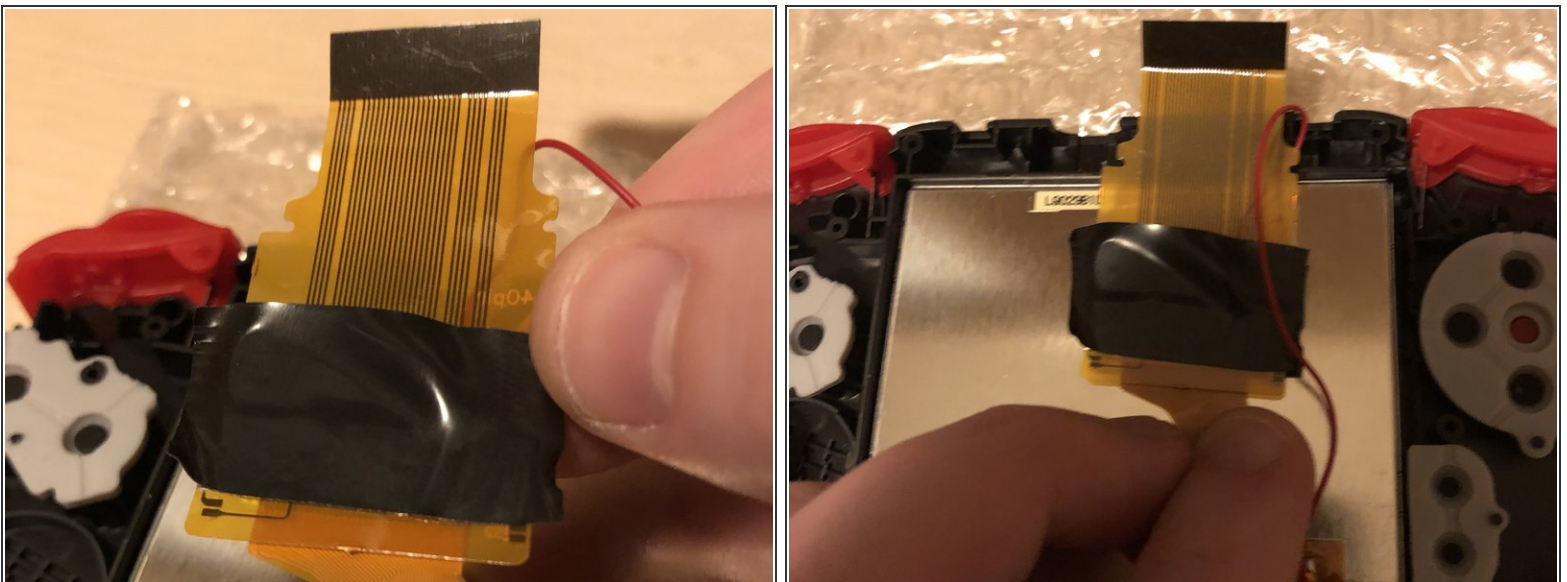
- Fold the LCD cable in a "Z" form. The cable is too long, this needs to be done, otherwise it won't fit.

Step 21 — Install the adapter



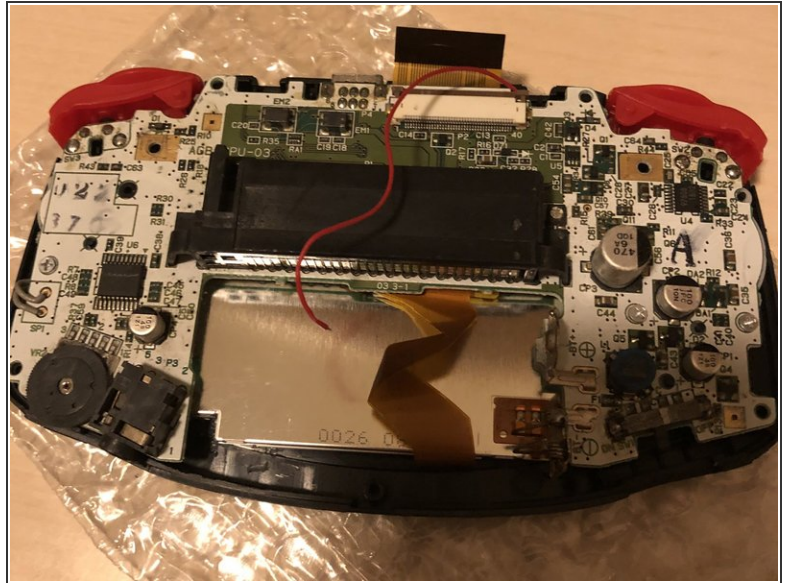
- Now it's a good time to take the adapter with you!
- Plug the LCD cable in the ZIF socket as displayed in the 2nd picture.
- Fold the LCD cable in the "Z" form again and place the adapter on the screen as displayed in the 3rd picture.

Step 22 — Attach tape if needed



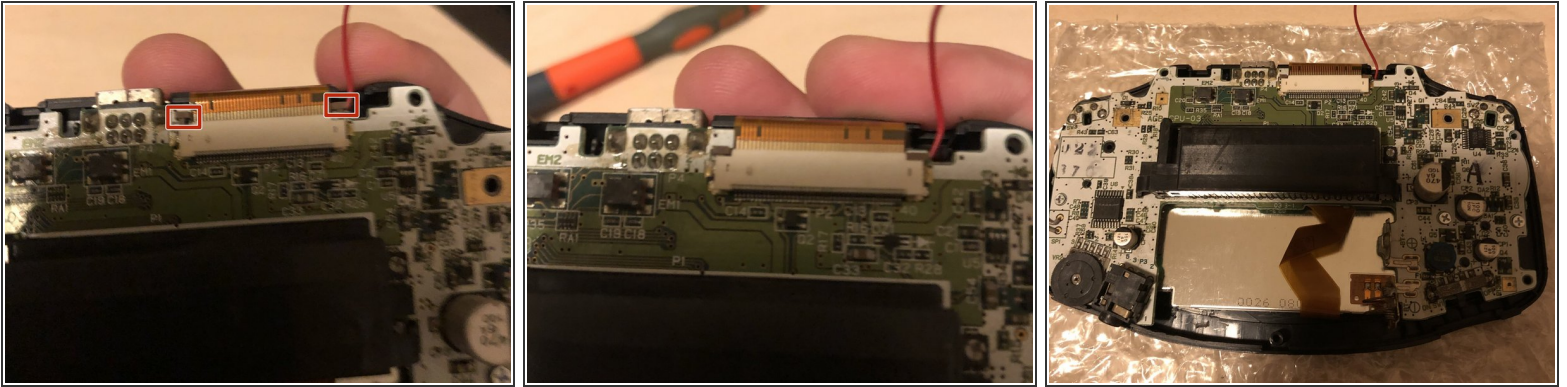
- Usually there is tape on the bracket, but if not, just place some anti-electrical tape to secure it.
- Don't forget to fold the cable in the "Z" form.

Step 23 — Place motherboard back in



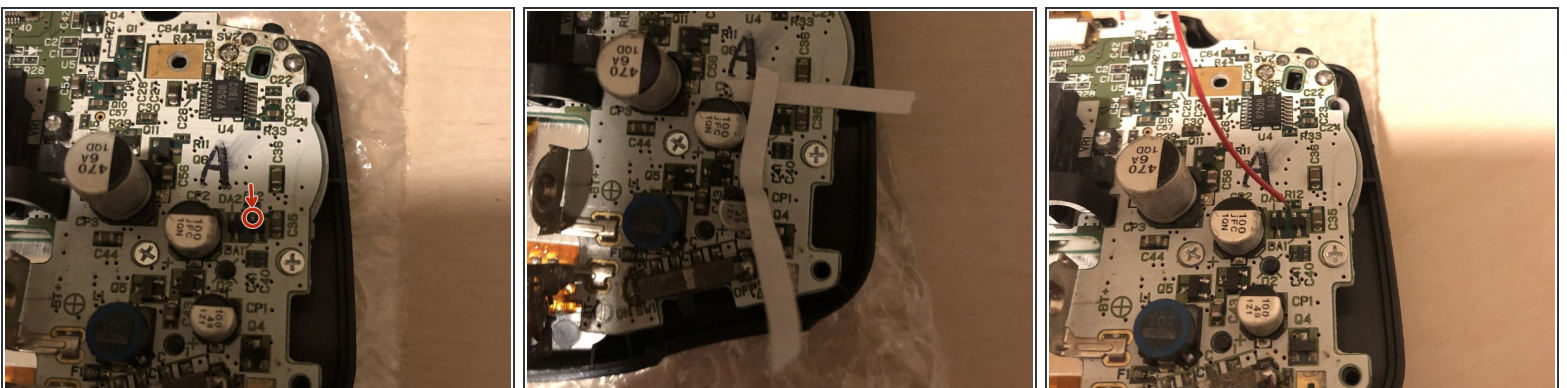
- Place the motherboard in. **WHEN** the motherboard is at place, then proceed.
- Put the screws back in, highlighted in red.
- Some models have a third screw.
- The 2nd picture shows when everything is in place with the screws in.

Step 24 — Attach ribbon cable



- Open the ZIF connector again and put the cable back in.
- ❗ If the cable won't fit, please check your adapter and repeat step 21.
- Close the ZIF connector with the LCD ribbon cable in. Make sure the red cable from the adapter is at it's place as shown in the 2nd picture.
- The 3rd picture shows how it needs to be.

Step 25 — Solder the red cable



- This is the pin you need! It's the **LEFT** leg of **DA1** !
- Put tape on the other IC's. Just to prevent bridges and just to be sure that you have the correct pin.
- ⚠ Solder the red cable to the **LEFT** leg of **DA1**.

Step 26 — Route cable and place buttons



- Route the cable as shown in picture 1.
- The 2nd picture shows when it's all good and finished.
- Now place the bumpers and the L/R buttons (if not done earlier). Don't forget to place the on/off button back too!

Step 27 — Place back cover and test



- Place the backplate back and put the screws back in.
- That's it! If everything is done it should work now. Have fun gaming!

That's it! If everything went as it should, you can play the GBA/GBC/GB games with your blacklight screen!