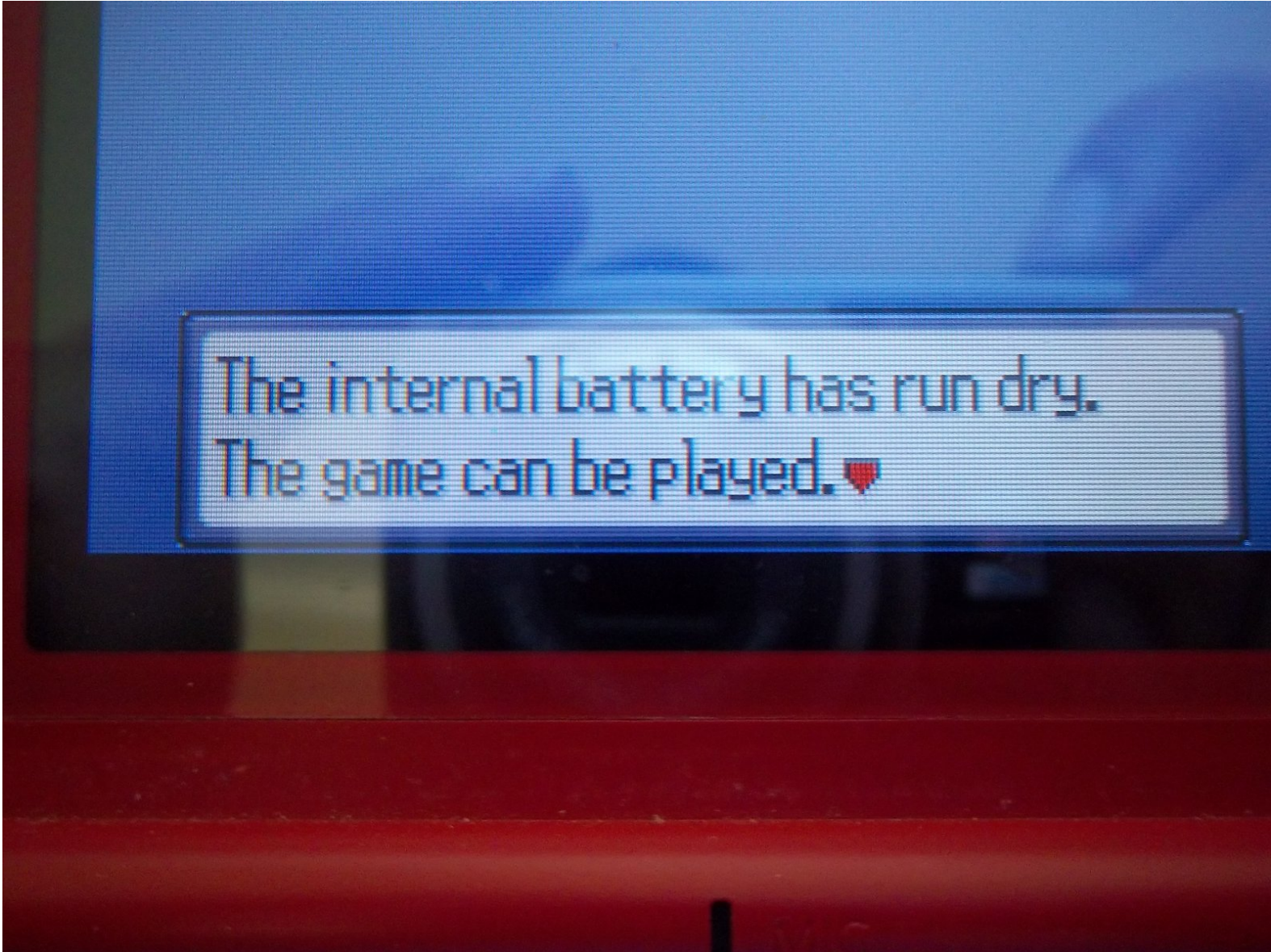




Gameboy Advance Cartridge Battery Replacement

Step by Step instructions to replace the internal battery of a Gameboy Advance (GBA) Cartridge.

Written By: Benjamin Cunliffe

A photograph of a Gameboy Advance screen. The screen is blue and displays a white rectangular box with a black border. Inside the box, the text 'The internal battery has run dry.' is written in a pixelated font. Below this, the text 'The game can be played.' is written in the same font, followed by a small red heart icon. The background of the screen is a dark blue, pixelated image of a character's face.

The internal battery has run dry.
The game can be played. ♥

INTRODUCTION

This is a guide to replace the internal battery without soldering so it is easier to replace, if needed, in the future. Make sure to verify which battery your cartridge requires before replacing it.

Note: by not soldering the battery you risk the chance of it becoming disconnected which can result in a save file being lost.



TOOLS:

- [Tri-wing Screwdriver](#) (1)
- [File Set](#) (1)
- [Electrical Tape in 6 Assorted Colors](#) (1)
- [Precision Utility Knife](#) (1)



PARTS:

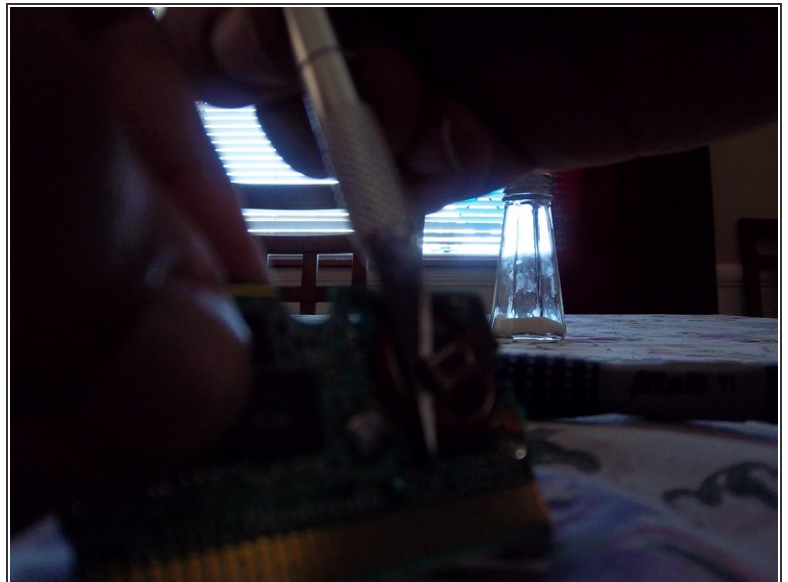
- [CR1616 Lithium Battery](#) (1)

Step 1 — Battery



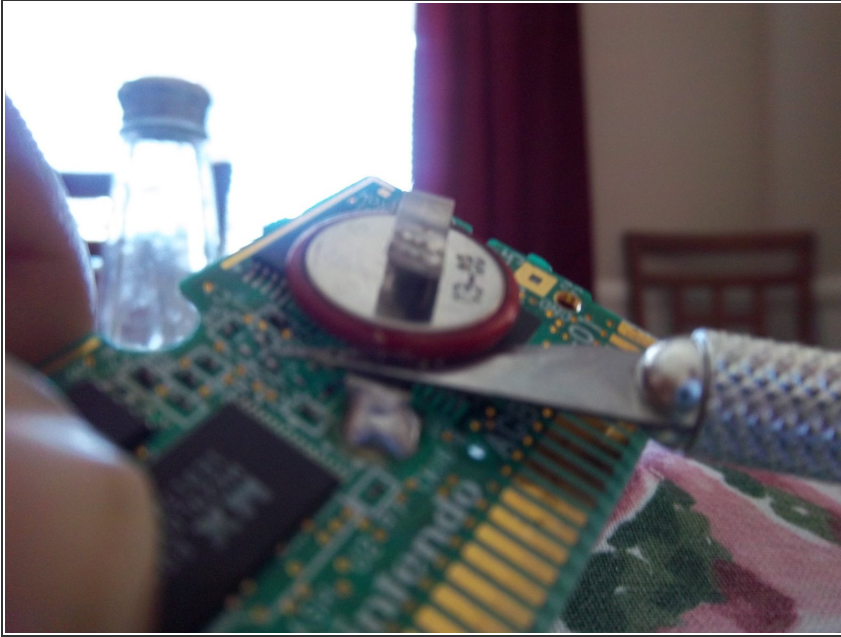
- Use a Y1 screw driver to remove the screw on the back of the game cartridge.

Step 2



- Make sure that you are grounded. While carefully holding the ROM board in place, use a sculpting knife to carefully pry the top contact off the dead battery by utilizing a slow, rocking motion.
- This may require a significant amount of force. Take care not to pry the contact off the board in the process. Make sure to start prying at the tip of the contact.

Step 3



- Repeat step two with the bottom contact.

Step 4



- **Optional:** Use sand paper to file the nubs on the contacts where the contacts were physically attached to the battery.

Step 5



- Place the new CR1616 battery in between the two contacts with the positive terminal facing down (textured side up).

Step 6



- Use electrical tape to adhere the two contacts to the battery. Make sure to wrap the tape underneath the bottom contact and over the top sandwiching the battery in between.
- Before taping the top contact to the battery, put a piece of electrical tape on the edge of the battery where the top contact has a chance of touching the edge. This will prevent a battery short and headaches.

Step 7



- Place the ROM board into the bottom cartridge casing. Replace the top casing and the Y1 screw.

Step 8



- Test the repair by playing it in a compatible drive (i.e. Gameboy Advance, Gameboy Advance SP, Gameboy Micro, DS, or DS Lite)
 - If the message still appears, check to make sure that the contacts have a good connection with the battery.

To reassemble your device, follow these instructions in reverse order.