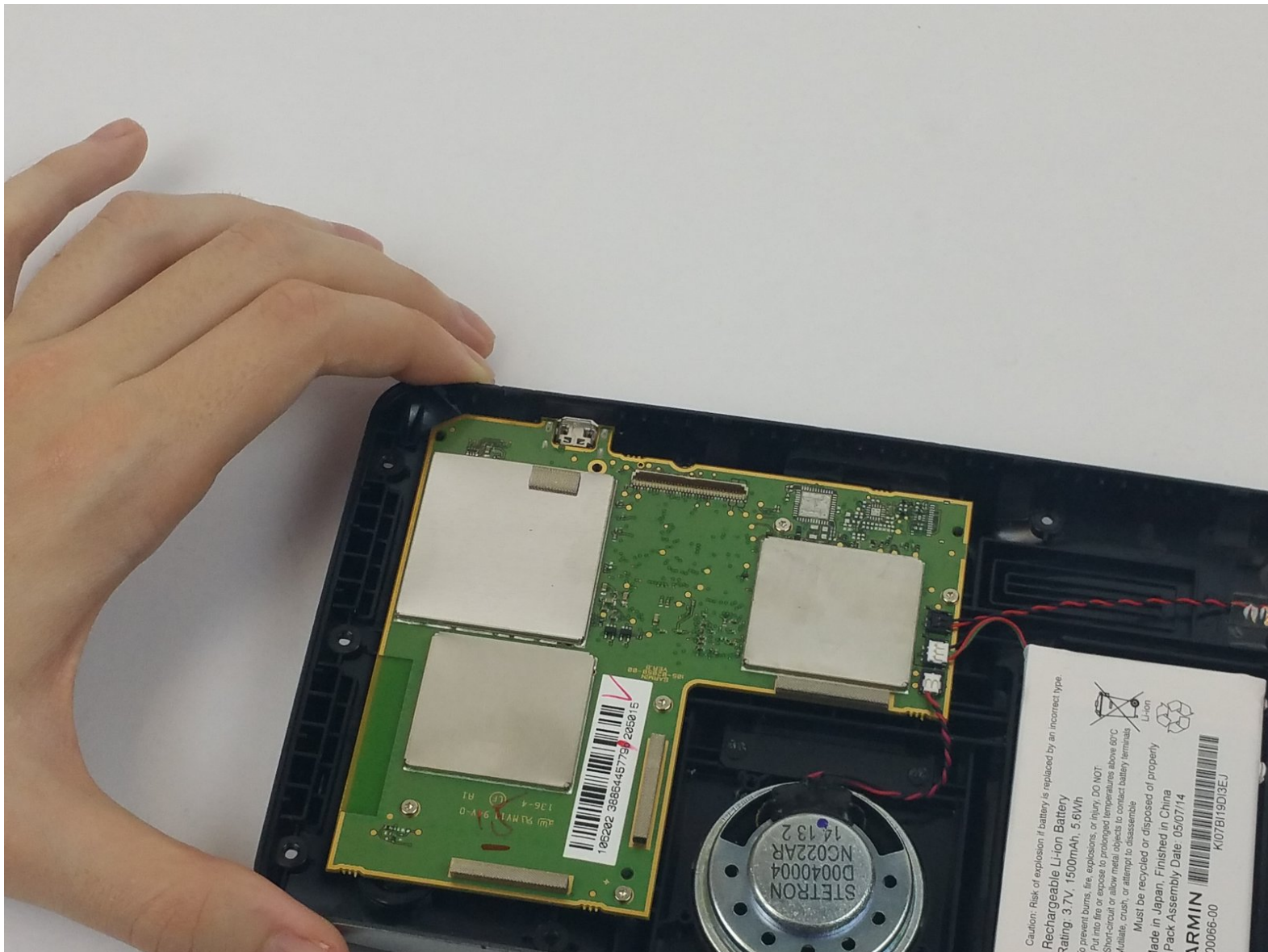




# Garmin Dezl 760LMT Motherboard Replacement

Replace your Garmin's broken or malfunctioning motherboard to fix the maps, operating system, or antenna.

Written By: Ryan Williams



This document was generated on 2019-09-22 09:44:47 AM (MST).

# INTRODUCTION

This guide will show you how to properly and safely remove the motherboard from your Garmin, preventing damage to you or the motherboard.



## TOOLS:

- [Anti-Static Wrist Strap](#) (1)
  - [T6 Torx Screwdriver](#) (1)
  - [Metal Spudger](#) (1)
  - [T5 Torx Screwdriver](#) (1)
-

## Step 1 — Back Panel



- Using a Torx T6 Screwdriver, remove the ten 7mm screws from the back panel.

## Step 2



- Using a metal spudger, pry the device apart.

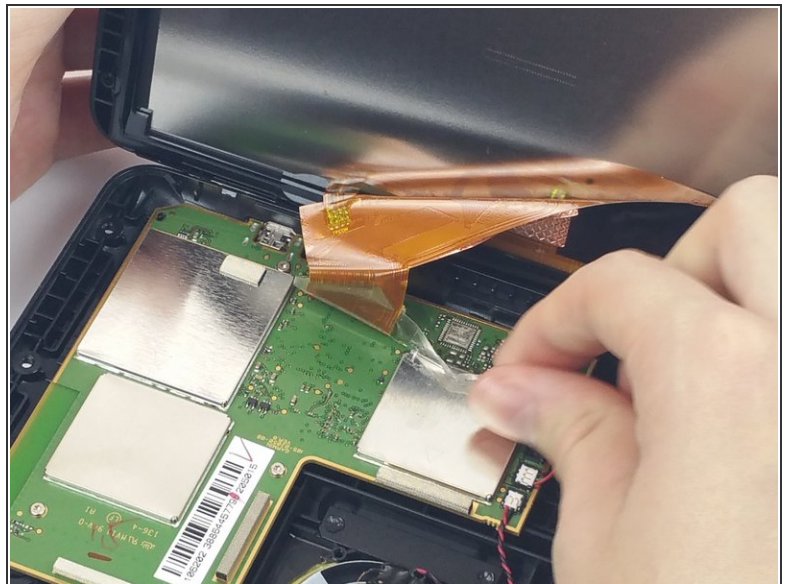
☑ To recombine them, line up the two halves of the device and press them together.

## Step 3



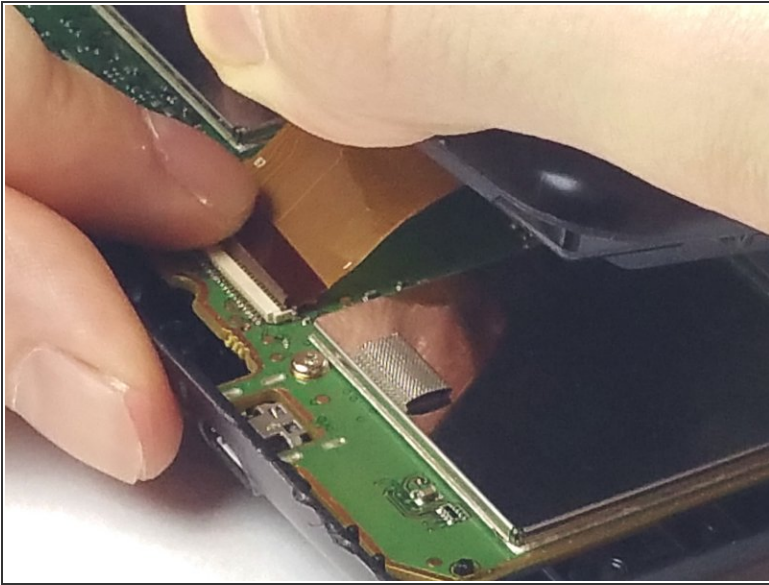
- Turn the device over, laying it on its back with the screen facing upwards.
  - Lift the front panel away from the silver part of the back panel.
- ⚠ Make sure not to rip the ribbon cable that is connected to the screen and the motherboard.

## Step 4 — Screen Ribbon Cable



- Lift the screen opposite where the "GARMIN" logo is located. Remove the clear tape holding the ribbon cable to the motherboard.

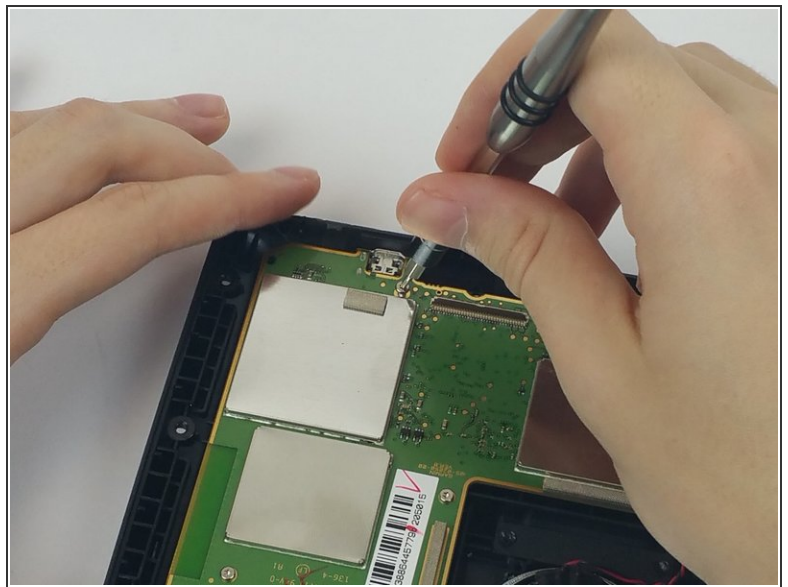
## Step 5



- Find and lift the small grey hinge at the end of the ribbon cable.

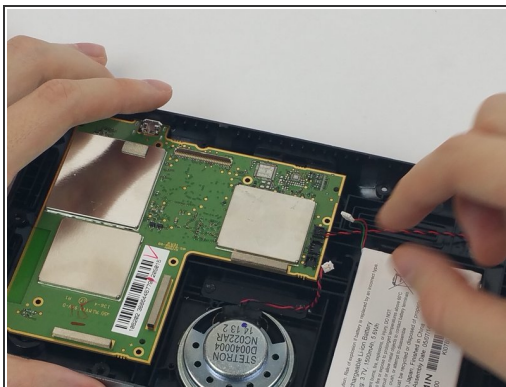
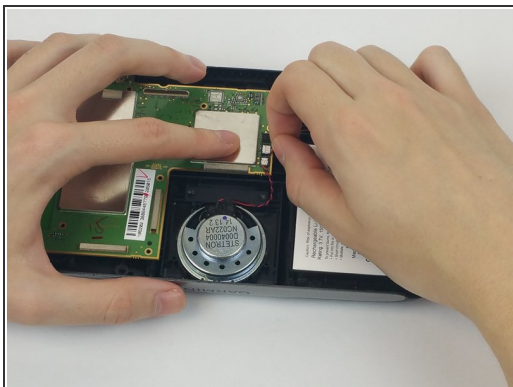
⚠ When handling the motherboard, make sure to wear an anti-static wrist strap.

## Step 6 — Motherboard



- Using a Torx T5 screwdriver, unscrew the six 5mm screws on the motherboard.

## Step 7



- Grasp each of the three wires near where it is attached to the motherboard. Lift them upward to detach them.
- Lift the motherboard from the device.

To reassemble your device, follow these instructions in reverse order.