



Garmin Dezl 760LMT Screen Replacement

Replace your Garmin's broken, malfunctioning, blurry, or cracked screen to restore proper functioning to the GPS.

Written By: Ryan Williams



INTRODUCTION

This guide will show you how to properly and safely remove the Garmin Dezl 760LMT's screen from the motherboard and its casing.

TOOLS:

- [Anti-Static Wrist Strap](#) (1)
 - [T6 Torx Screwdriver](#) (1)
 - [Metal Spudger](#) (1)
 - [T5 Torx Screwdriver](#) (1)
-

Step 1 — Back Panel



- Using a Torx T6 Screwdriver, remove the ten 7mm screws from the back panel.

Step 2



- Using a metal spudger, pry the device apart.

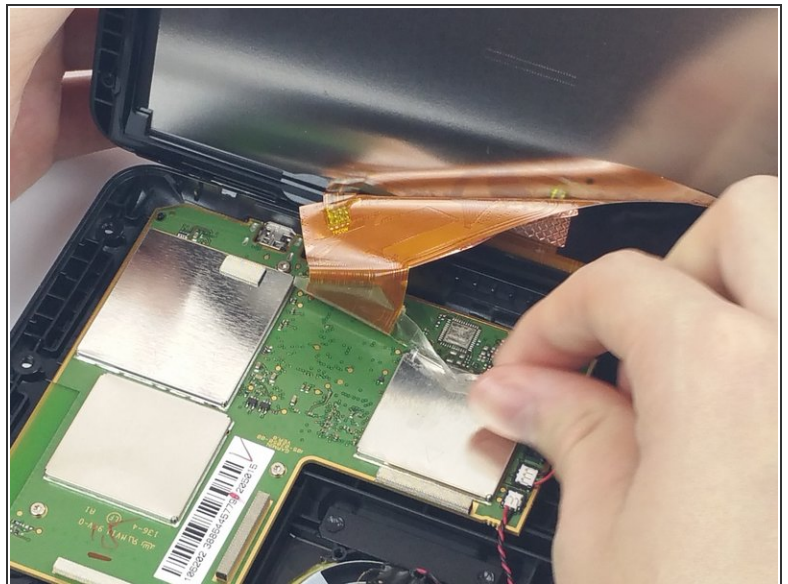
☑ To recombine them, line up the two halves of the device and press them together.

Step 3



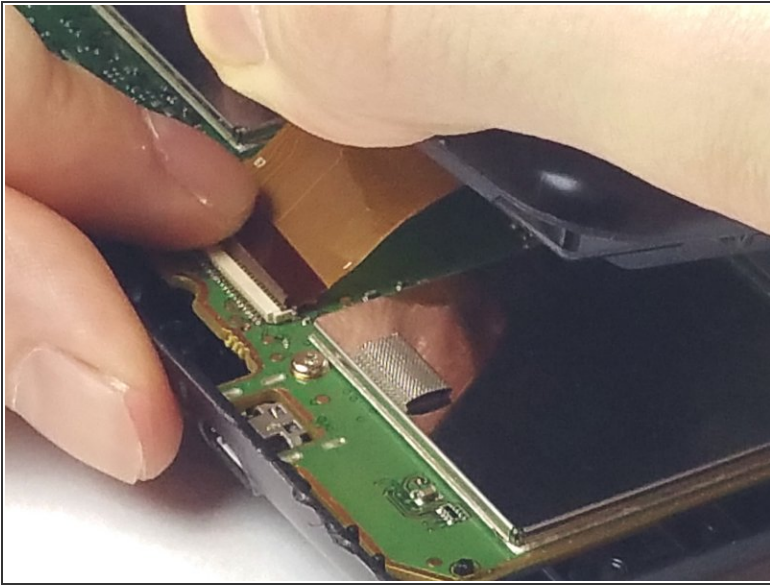
- Turn the device over, laying it on its back with the screen facing upwards.
 - Lift the front panel away from the silver part of the back panel.
- ⚠ Make sure not to rip the ribbon cable that is connected to the screen and the motherboard.

Step 4 — Screen Ribbon Cable



- Lift the screen opposite where the "GARMIN" logo is located. Remove the clear tape holding the ribbon cable to the motherboard.

Step 5



- Find and lift the small grey hinge at the end of the ribbon cable.

⚠ When handling the motherboard, make sure to wear an anti-static wrist strap.

Step 6 — Screen



- Using a Torx T5 screwdriver, unscrew the four 7mm screws from the back plate of the screen.

Step 7



- Turn the screen over so that it is facing upwards.
- Remove the front plate of the screen.
- Lift the screen from its back casing.

To reassemble your device, follow these instructions in reverse order.