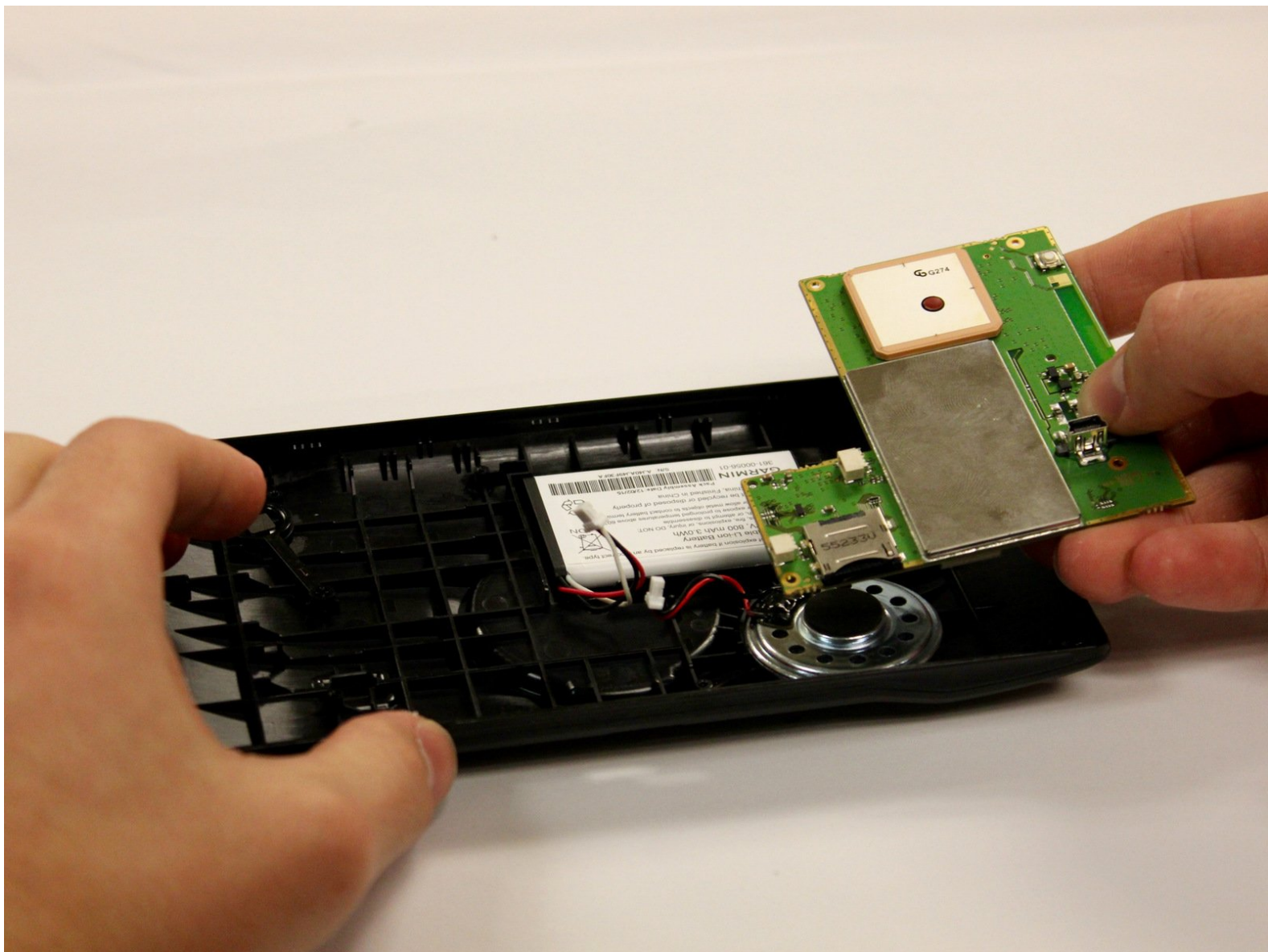




Garmin Drive 60LM Motherboard Replacement

This guide will show you how to replace the motherboard in your device in a safe and efficient manner.

Written By: Andy Flores



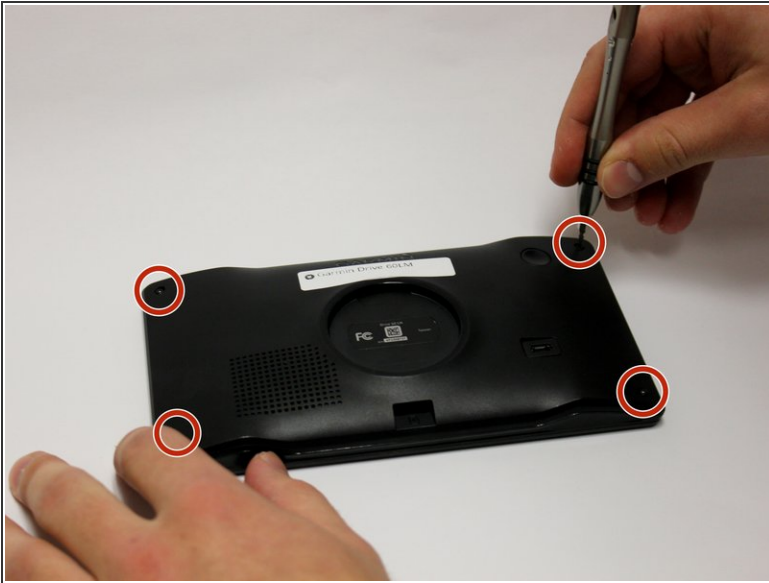
INTRODUCTION

To replace the motherboard in your device you will need a T4 Torx screwdriver, a metal spudger, and a replacement motherboard. Be sure to have a large workspace to avoid mishandling or damaging the device components.

TOOLS:

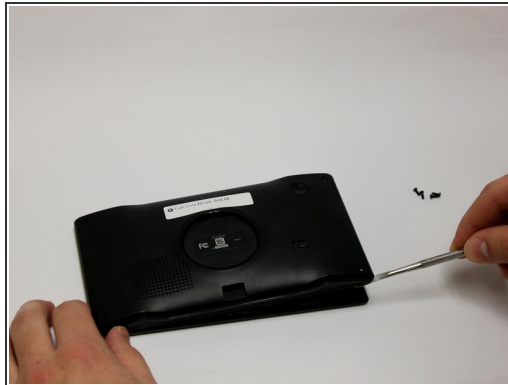
- [T4 Torx Screwdriver](#) (1)
 - [Metal Spudger](#) (1)
 - [Spudger](#) (1)
-

Step 1 — Motherboard



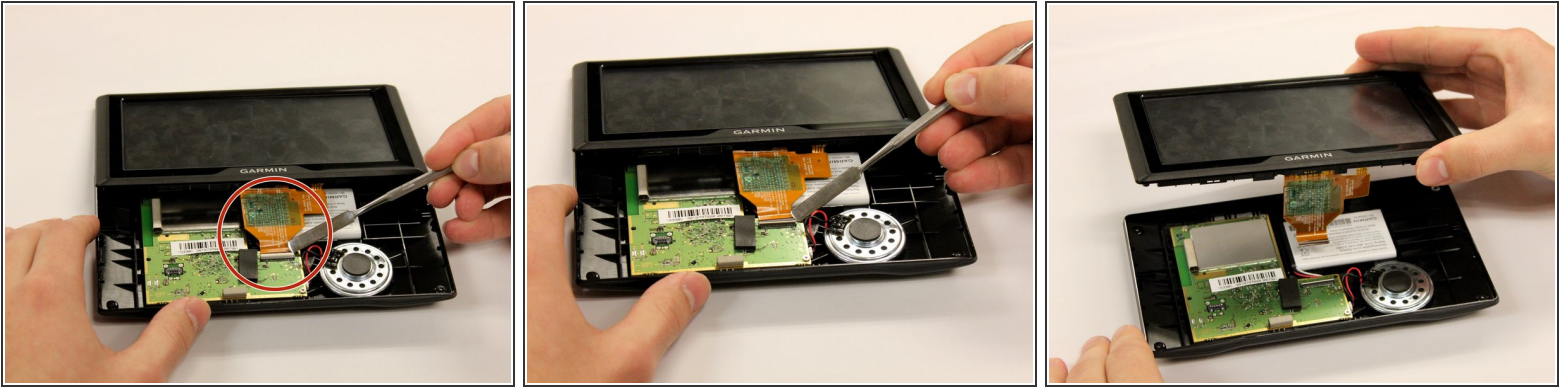
- Using the T4 Torx screwdriver, unscrew all four of the screws (1/4 inch, 6.35 mm) from the back panel of your device.

Step 2



- Remove the back panel using the metal spudger tool.
- ⚠ The metal spudger tool can cause damage to internal components.
- Flip the device over with the screen facing upward and open the device.

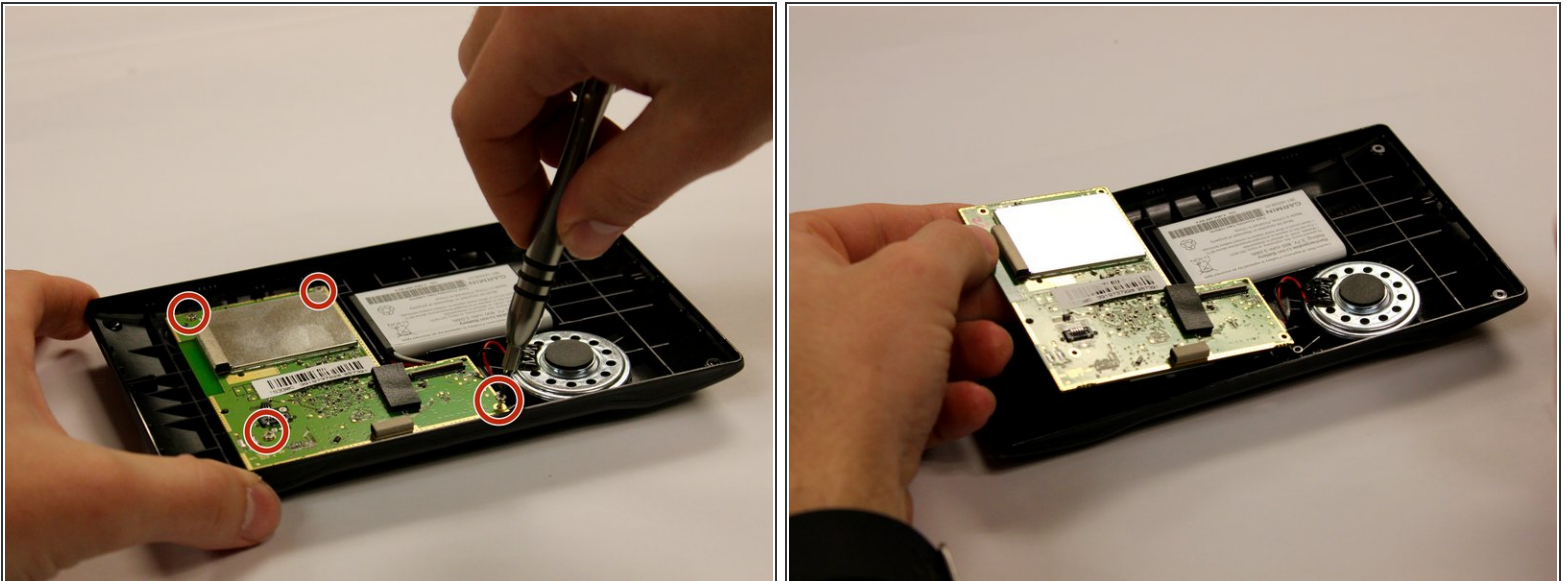
Step 3



- Use a plastic spudger to flip up the white clamp holding the orange ribbon in place to the motherboard.
- Lift the screen and orange ribbon away from the motherboard.

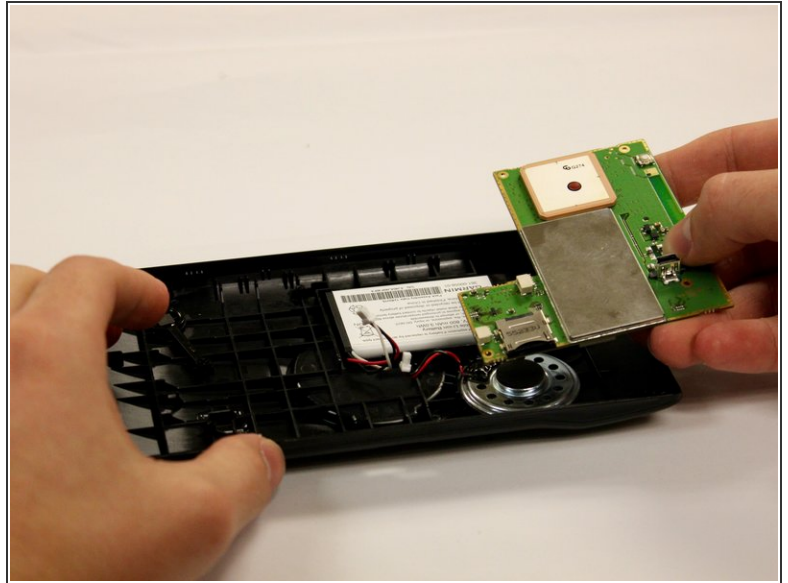
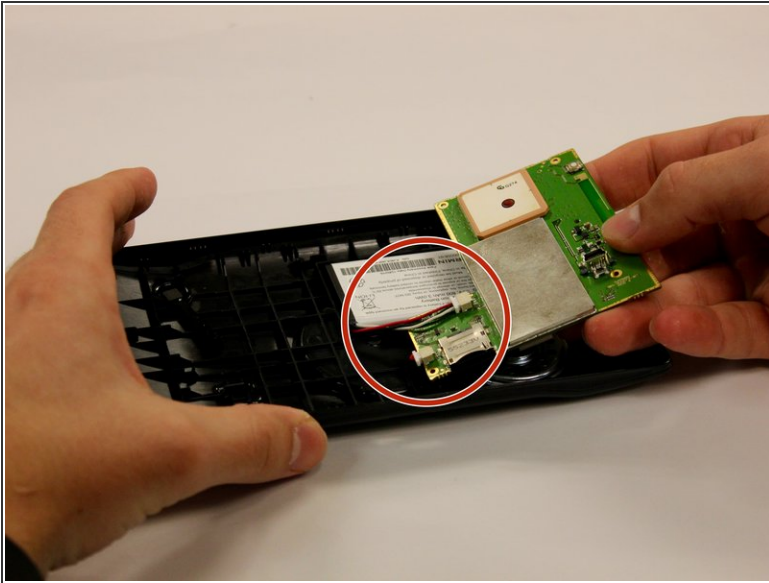
⚠ The metal spudger pictured is not ESD safe. Use a plastic spudger instead.

Step 4



- Using the T4 Torx screwdriver, unscrew the four screws (1/2 cm, 5mm) from the motherboard.
- Then, lift the motherboard out of its position.

Step 5



- Flip the motherboard over towards the right.
- Then, carefully disconnect the two sets of wires that are connected to the battery and the speaker using your fingers.
- Remove the motherboard.

To reassemble your device, follow these instructions in reverse order.