



# Garmin Drive 60LM Speaker Replacement

This guide will show you how to efficiently and safely replace the speaker in your Garmin Drive 60LM.

Written By: Andy Flores



## INTRODUCTION

To replace the speaker in your device you will need a T4 Torx screwdriver, a metal spudger, a plastic spudger, and a replacement speaker. Be sure to have a large workspace to avoid mishandling or damaging the device components.



### TOOLS:

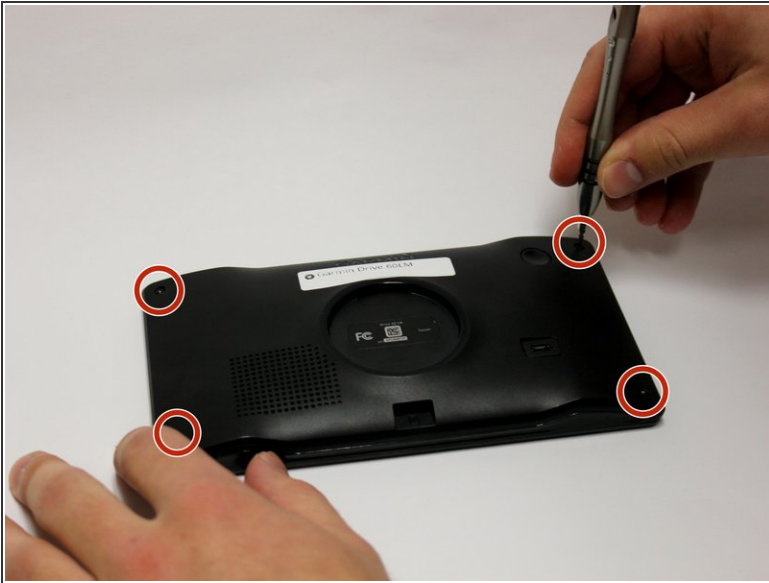
- [T4 Torx Screwdriver](#) (1)
- [Metal Spudger](#) (1)
- [Spudger](#) (1)



### PARTS:

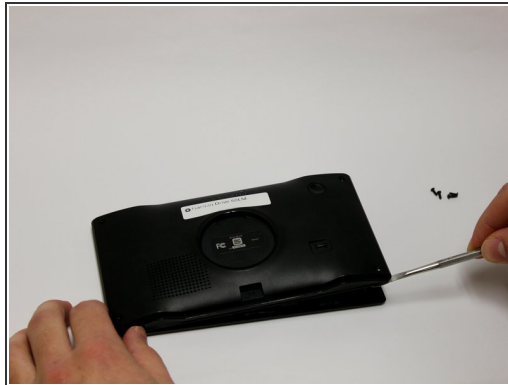
- [Speaker](#) (1)

## Step 1 — Speaker



- Using the T4 Torx screwdriver, unscrew all four of the screws (1/4 inch, 6.35 mm) from the back panel of your device.

## Step 2



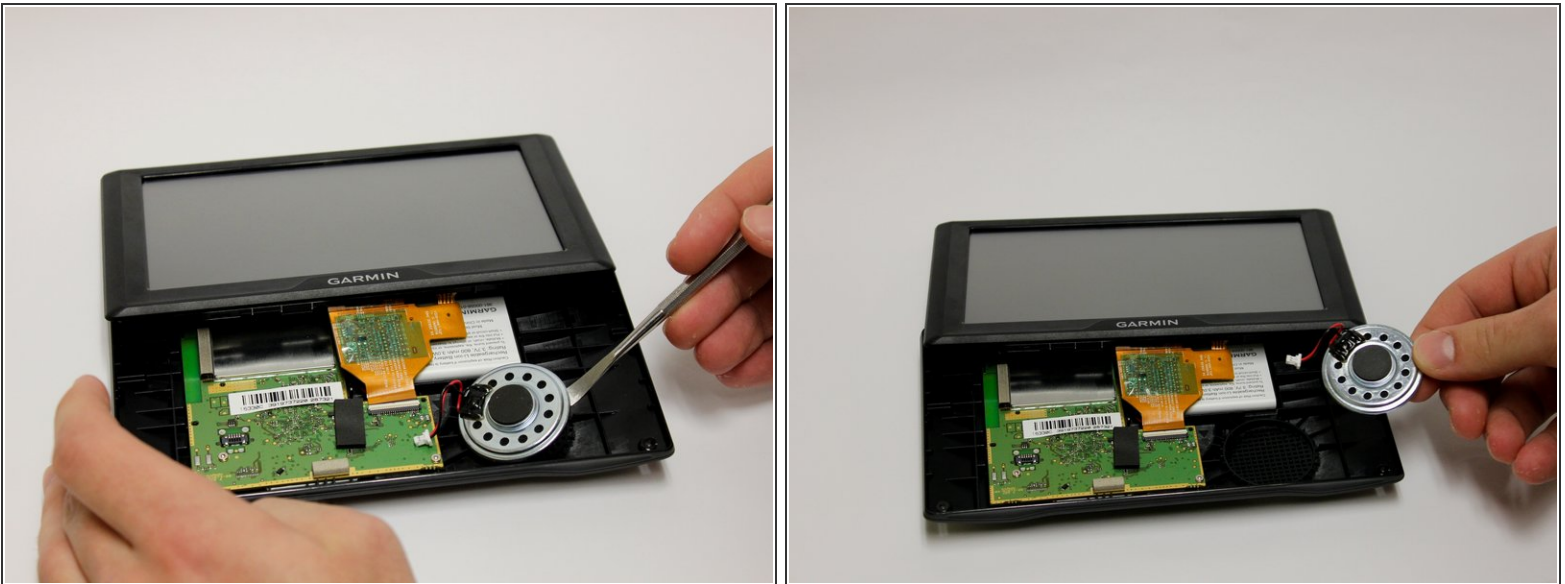
- Remove the back panel using the metal spudger tool.
- ⓘ You will not be able to remove the back panel entirely. Make sure to separate the back panel slowly so that you do not rip the orange ribbon inside.
- ⚠ The metal spudger tool can cause damage to internal components.
- Flip the device over with the screen facing upward and open the device.

### Step 3



- Use a plastic spudger tool to lift the wires from behind the motherboard.
- Carefully disconnect the wires attaching the speaker to the motherboard using your fingers.

### Step 4



- Using a plastic spudger and your fingers, remove the speaker from the device.

To reassemble your device, follow these instructions in reverse order.