



Garmin Edge 1000 Back Cover Replacement

This guide demonstrates how to replace the back cover of the Garmin Edge 1000.

Written By: Taylor McNees



INTRODUCTION

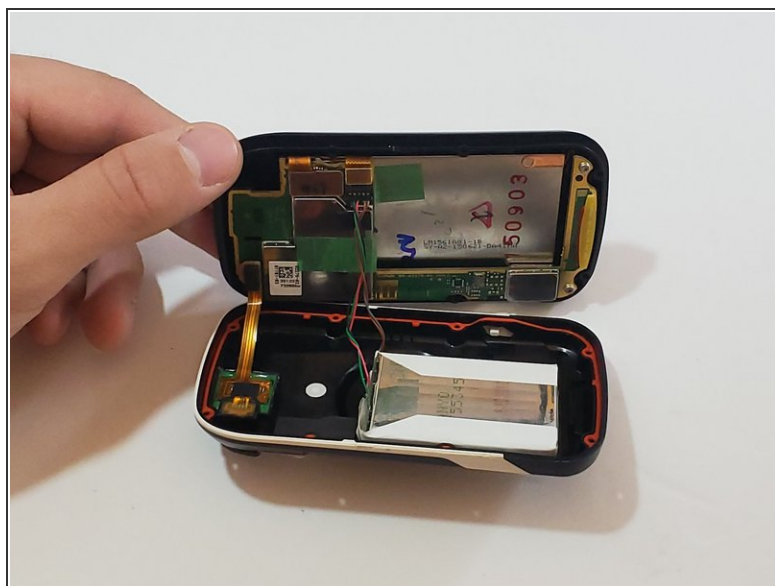
If there is an issue with your Garmin 1000 Edge (M/N F4ACGQ00) mount, use this guide to replace the back cover of your unit.


The back cover houses the device's SIM card and battery as well. This guide can be used to gain access to these components as needed.

TOOLS:

- [T6 Torx Screwdriver](#) (1)
-

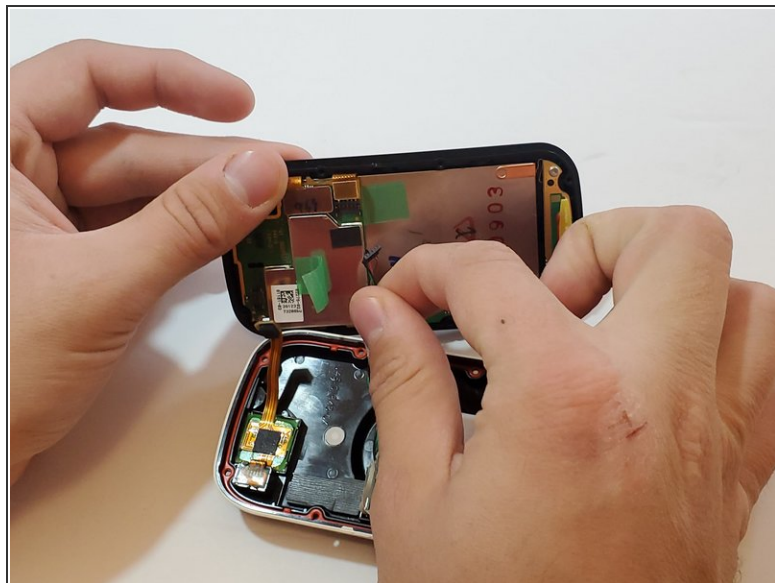
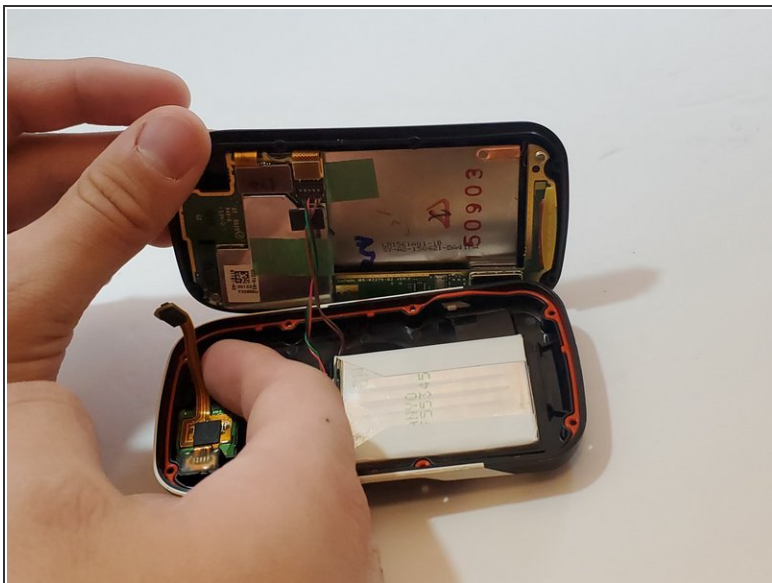
Step 1 — Back Cover



 Be sure the device is properly powered all the way off before starting the replacement.

- Hold the device front side down. Remove the eight T6 Torx screws along the backside of the device.
- Pull the front side of the device apart from the back side.

Step 2



- Disconnect the bronze SIM card flex cable from the motherboard with your finger.
- Disconnect the battery cord to completely separate the front cover from the back cover of the device with your finger.

To reassemble your device, follow these instructions in reverse order.