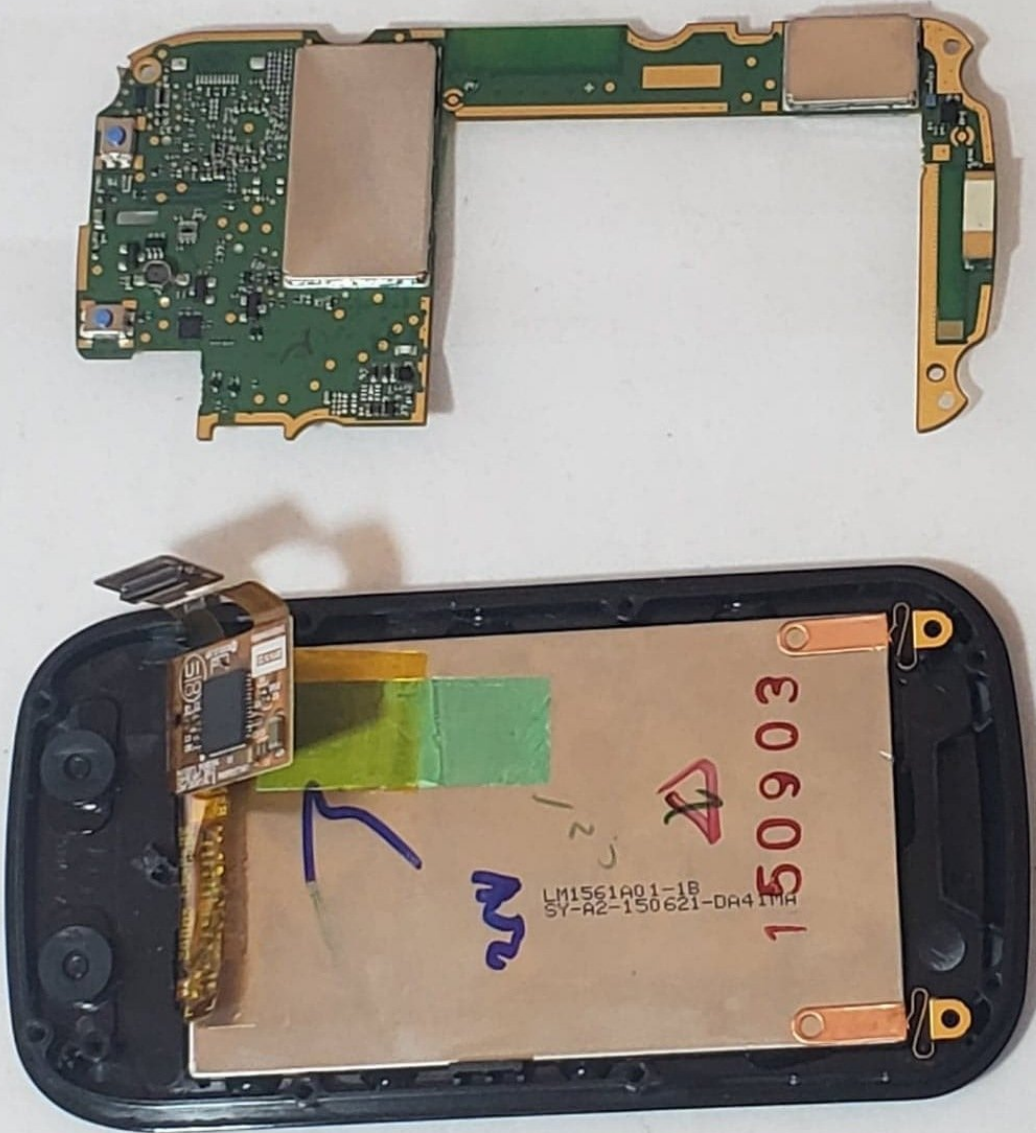




# Garmin Edge 1000 Motherboard Replacement

How to replace the motherboard in the Garmin Edge 1000.

Written By: Taylor McNees



## INTRODUCTION

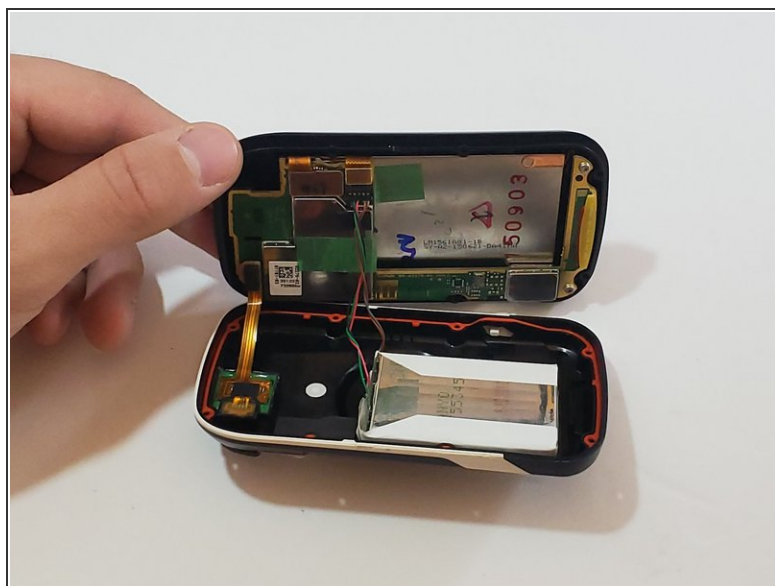
If your Garmin edge has stopped functioning properly, this guide will allow access to the motherboard to check if it is fried, and if needed, steps to replacing the motherboard.




### TOOLS:

- [T6 Torx Screwdriver](#) (1)
  - [iFixit Opening Tools](#) (1)
-

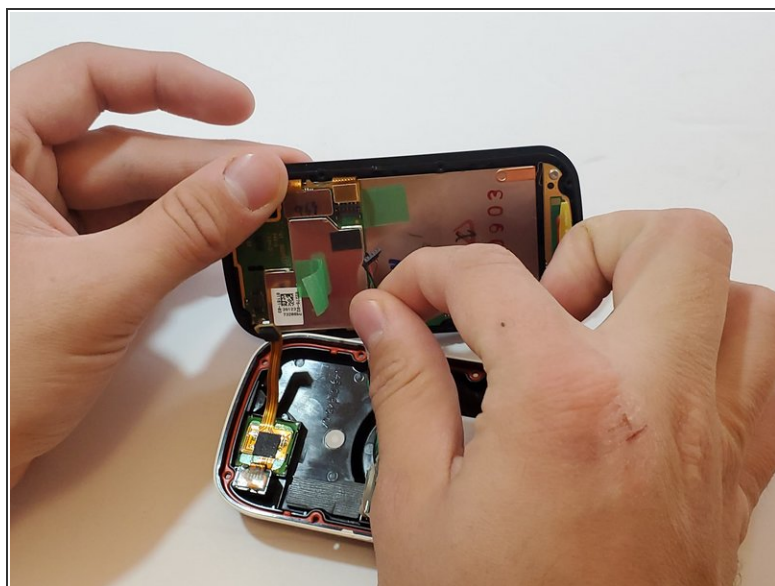
## Step 1 — Back Cover



 Be sure the device is properly powered all the way off before starting the replacement.

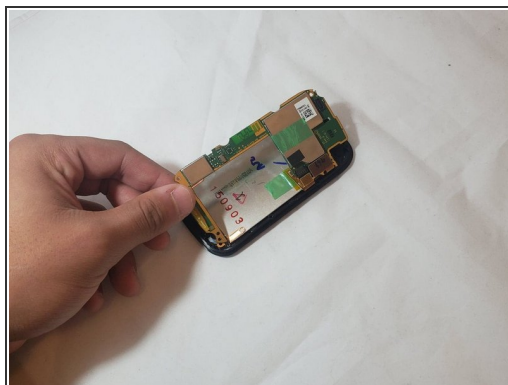
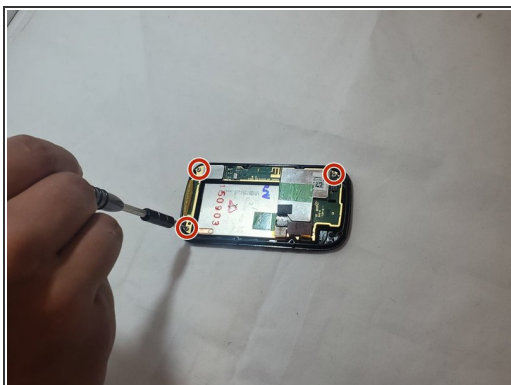
- Hold the device front side down. Remove the eight T6 Torx screws along the backside of the device.
- Pull the front side of the device apart from the back side.

## Step 2



- Disconnect the bronze SIM card flex cable from the motherboard with your finger.
- Disconnect the battery cord to completely separate the front cover from the back cover of the device with your finger.

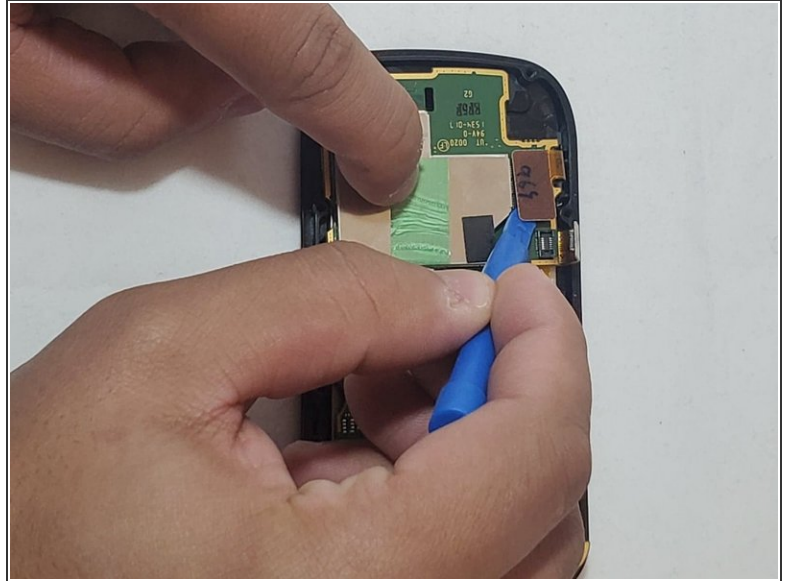
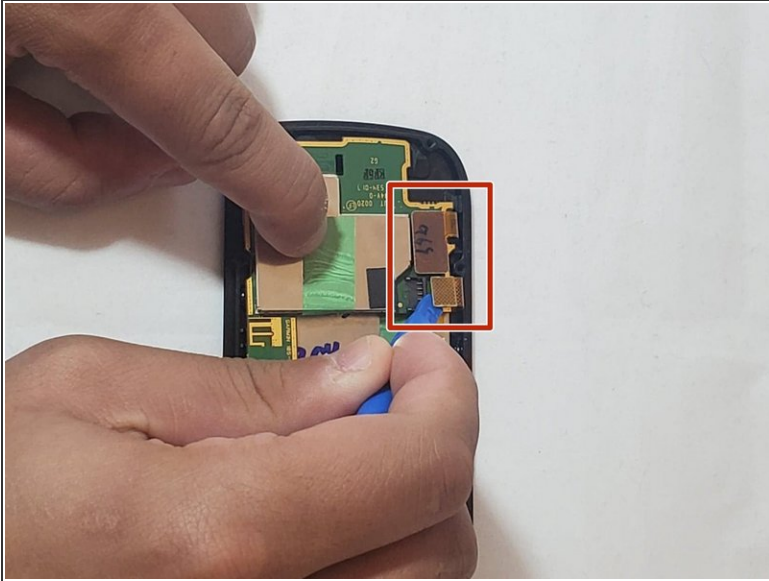
## Step 3 — Motherboard



- Remove the three T6 Torx screws to release the motherboard.

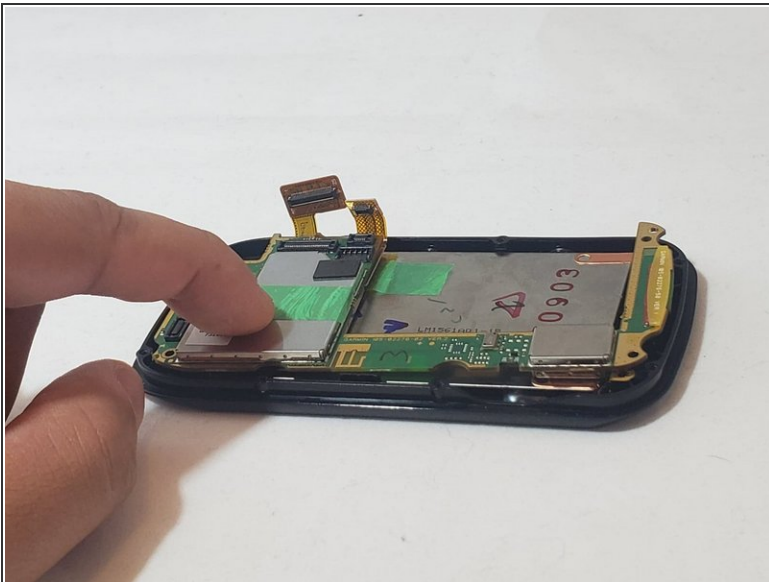


## Step 4



- Disconnect the two bronze tabs connected to the motherboard using an opening tool.

## Step 5



- Pull the motherboard out from the device.

To reassemble your device, follow these instructions in reverse order.