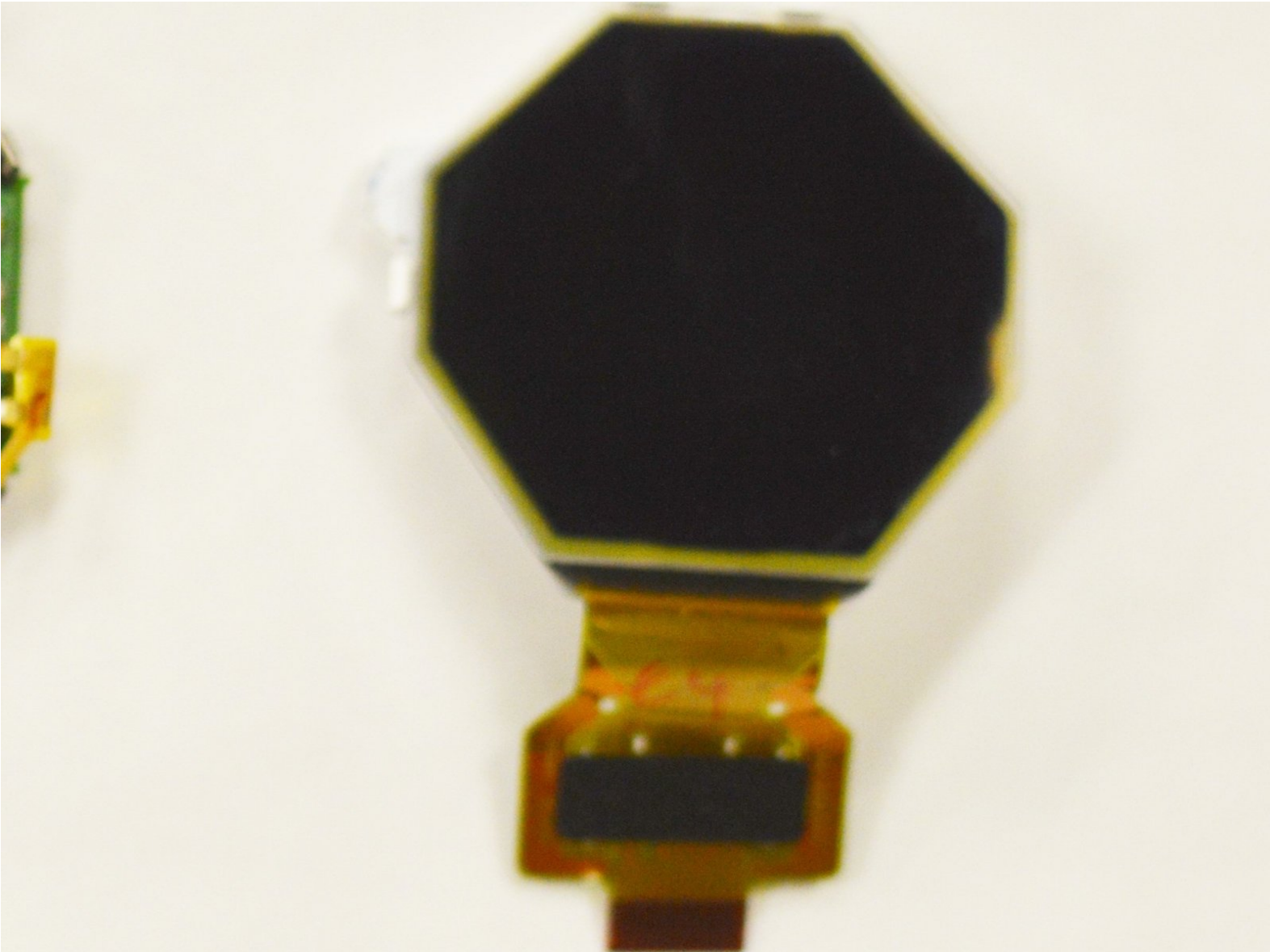




Garmin Fenix 2 Display Replacement

How to replace the display on a Garmin Fenix 2

Written By: Brandon Barger



INTRODUCTION

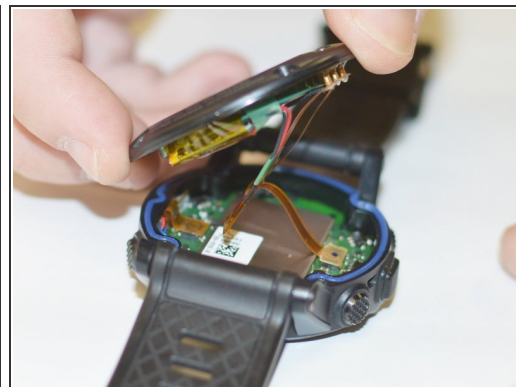
We will remove the display from the Garmin watch so it can be replaced. Tools that you will need include nylon spudger and Torx T9 screwdriver.



TOOLS:

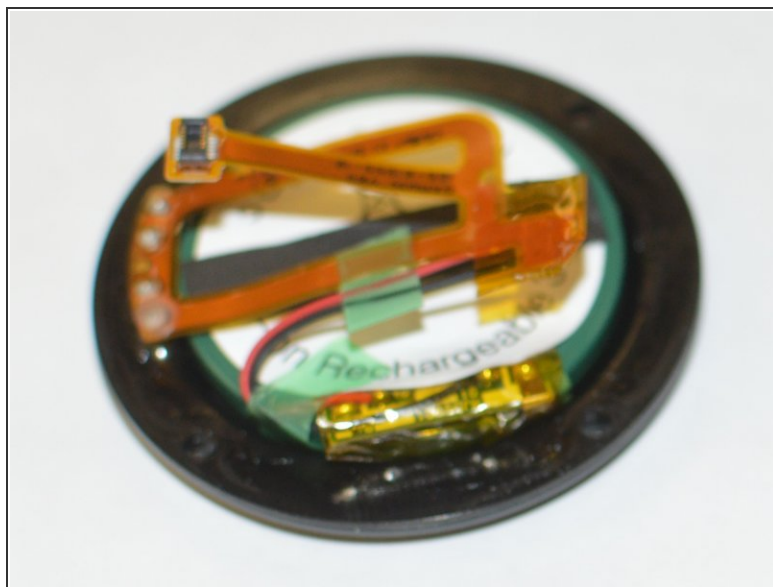
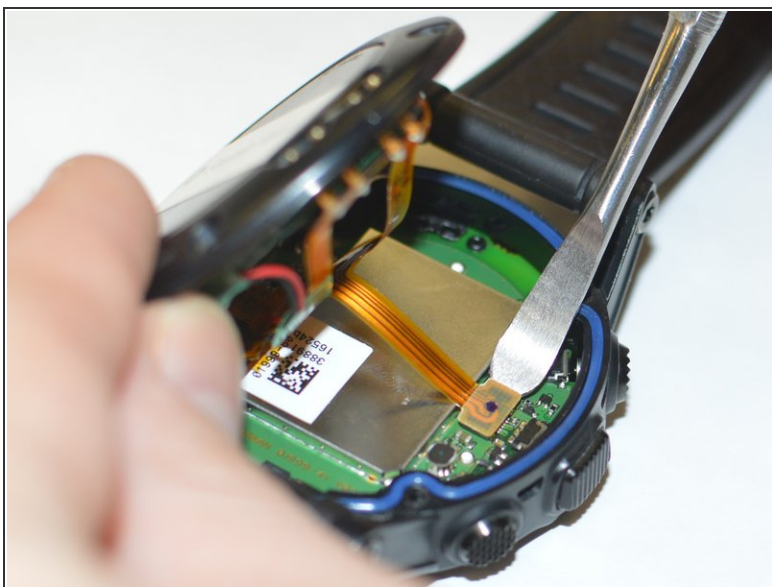
- [Spudger](#) (1)
 - [T9 Torx Screwdriver](#) (1)
-

Step 1 — Battery



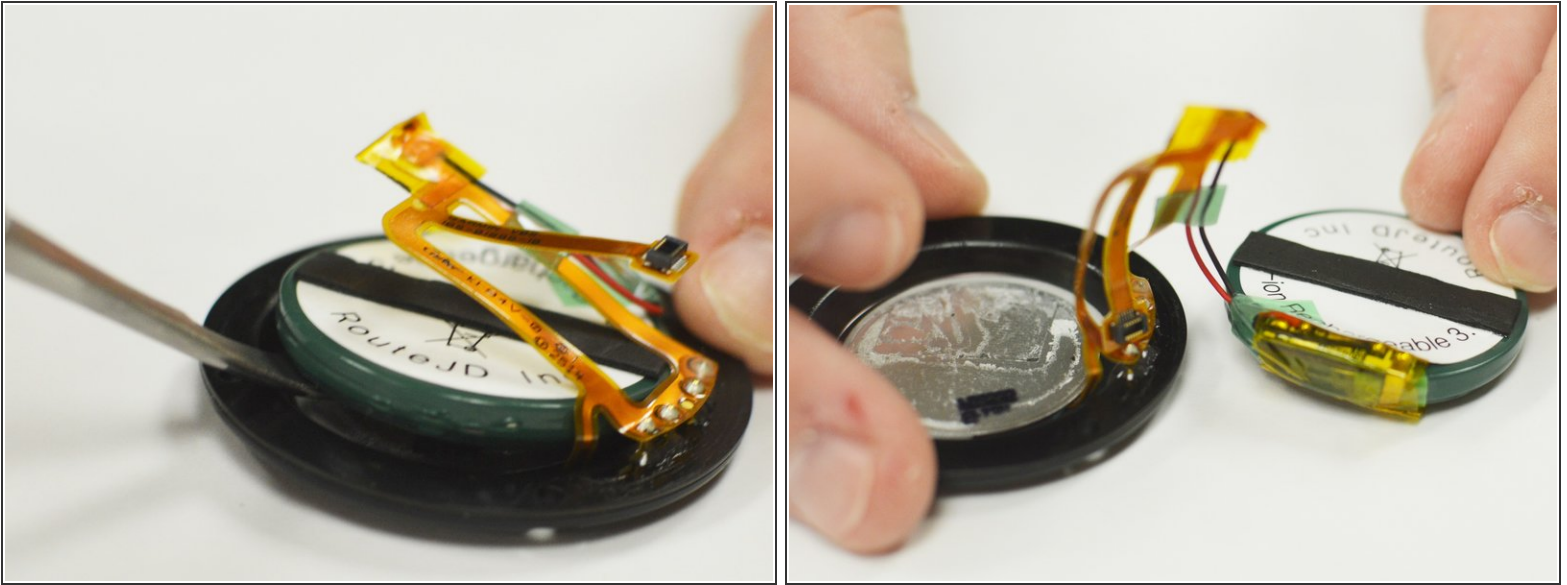
- Use a Torx T9 screwdriver to remove these four .8mm screws and separate the housing.

Step 2




- Use a spudger tool to disengage the power ribbon from the main board. Once the ribbon is disconnected you can separate the bottom piece of the housing that holds the battery.

Step 3



- Use the spudger tool again and wedge it in between the battery and the housing, pry until the battery starts to separate from the adhesive holding it in place. Once you have the battery disconnected you are ready to replace it.

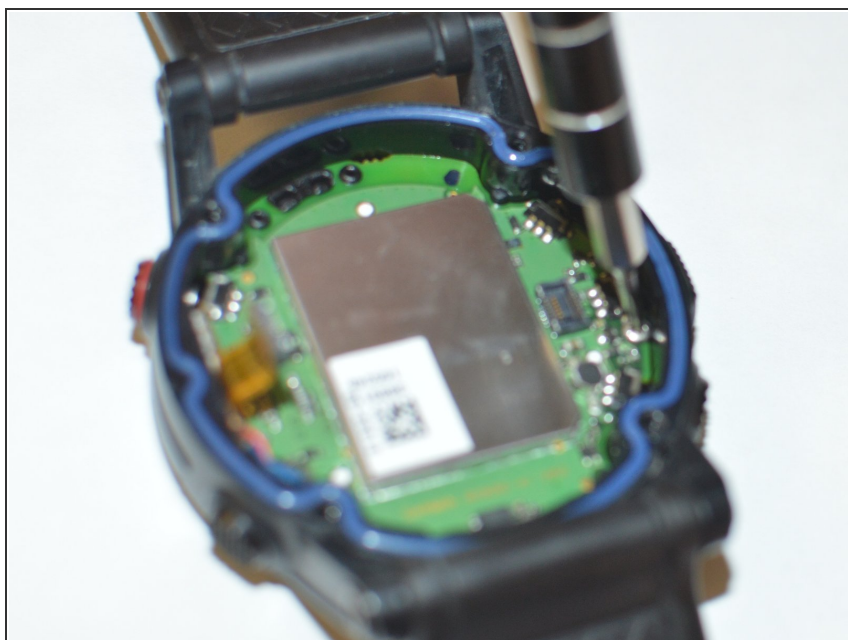
 Despite the fact that the metal spudger is shown being used in this step, make sure to use a plastic opening tool or nylon spudger to pry up the battery. The metal spudger has a much larger chance of puncturing the battery, and thus should not be used.

Step 4 — Motherboard



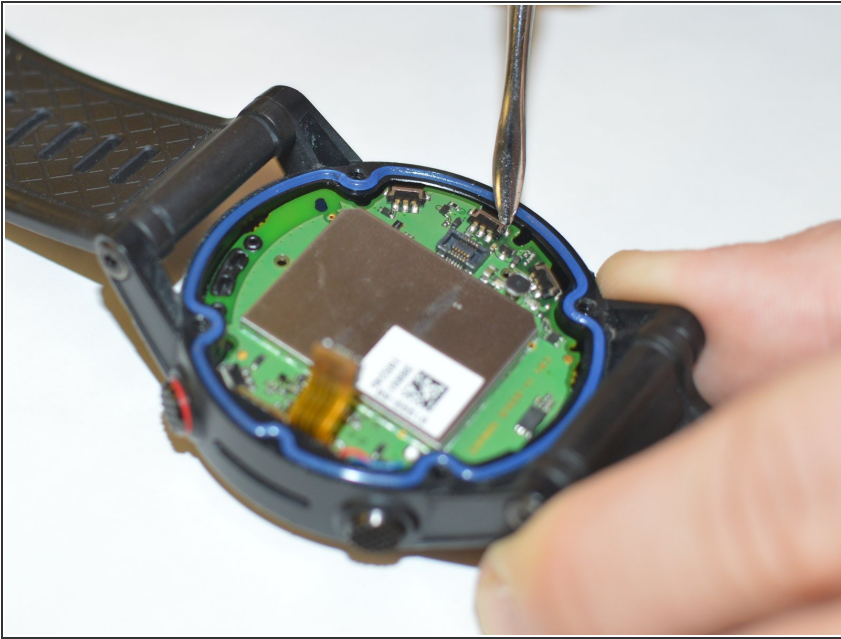
- Use a spudger to pry open the power ribbon from the main board.

Step 5



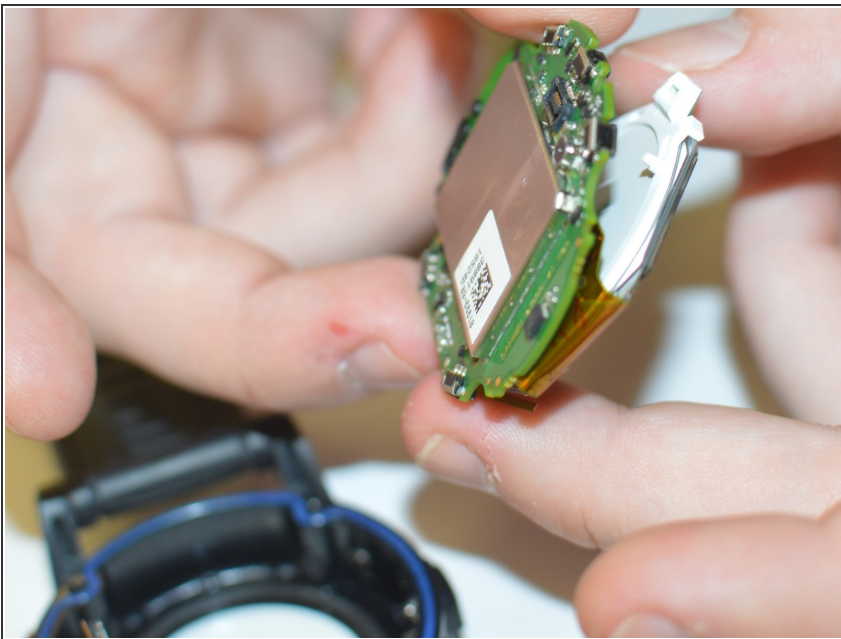
- Use your Torx T9 screwdriver to remove the one .8mm screw that holds the main board to the watch housing.

Step 6



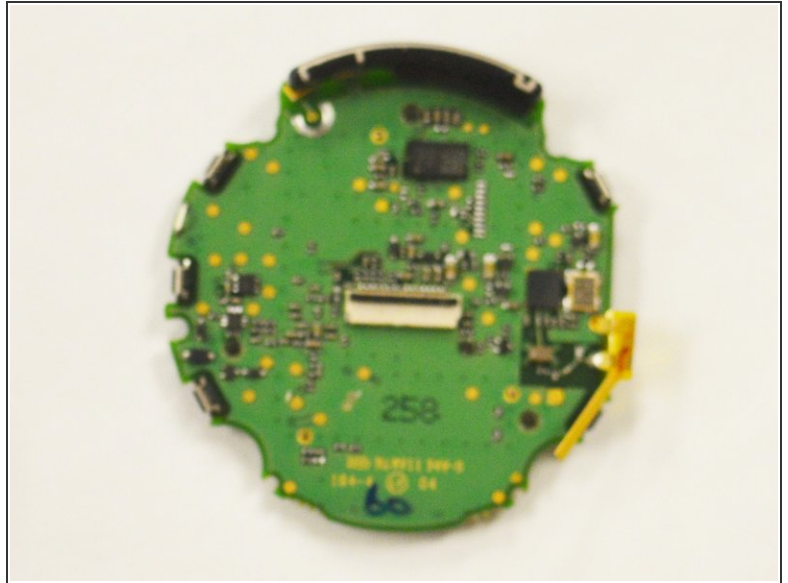
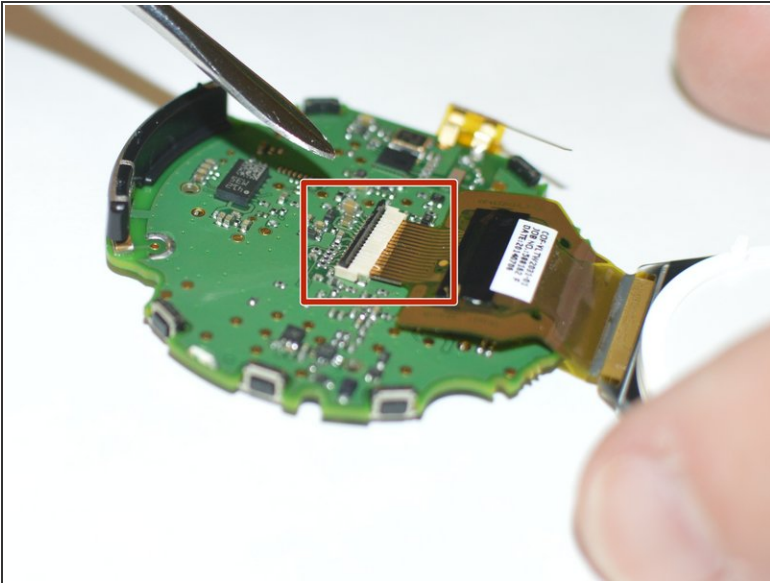
- Use the spudger to pry the motherboard out of the housing.

Step 7



- Once removed simply separate the digitizer from the main board.

Step 8



- Lastly use your spudger tool to pry the data ribbon open from the motherboard. Once the ribbon is removed the board will be free and you can replace the board.

Step 9 — Display



- The display is also ready to be replaced.

To reassemble your device, follow these instructions in reverse order.

This document was generated on 2019-09-20 03:53:17 AM (MST).

