



# Garmin Forerunner 25 Battery Replacement

Restore power to your Garmin Forerunner 25 by replacing your dying battery.

Written By: Dustin Persohn



---

## INTRODUCTION

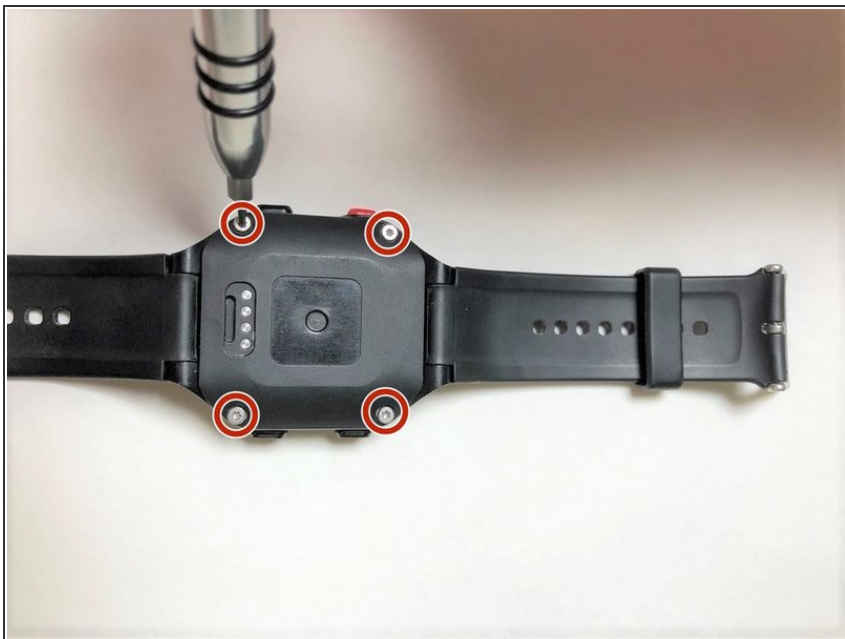
Battery replacement is a common fix for devices as they age. This fix is quick and easy with the use of a T5 screwdriver.



### TOOLS:

- [T5 Torx Screwdriver](#) (1)
  - [Spudger](#) (1)
-

## Step 1 — Battery



- ⚠ Power off your watch before disassembling it.
- Place the watch on a hard surface with the screen facing down.
- Unscrew the four 7.0 mm screws located at each corner using a T5 screwdriver.

## Step 2



- Pry the old battery out using a plastic spudger.

To reassemble your device, follow these instructions in reverse order.