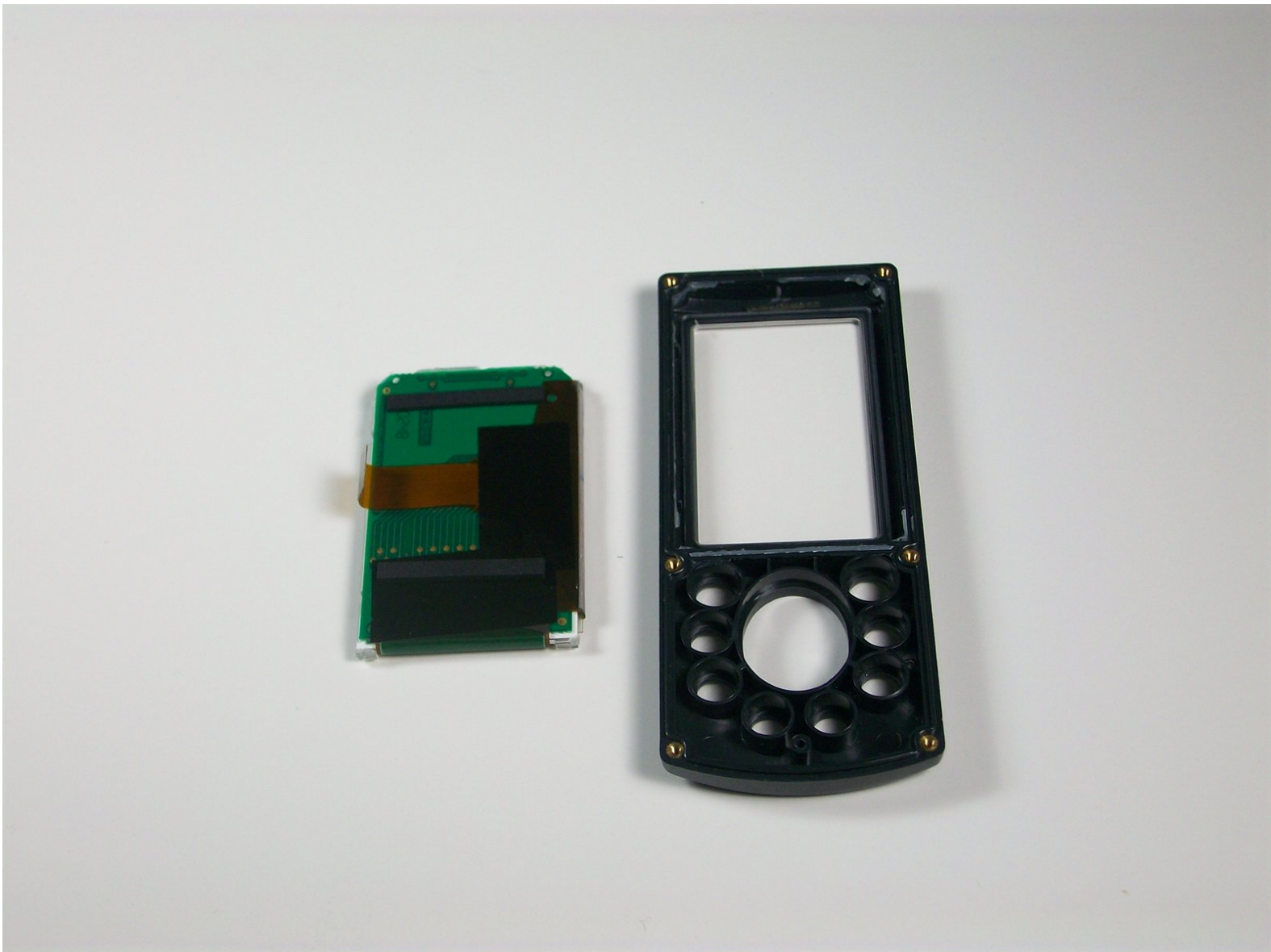




Garmin GPS V Front Plate Replacement

This guide will explain how to replace the front plate of the Garmin GPS V.

Written By: Connor





TOOLS:

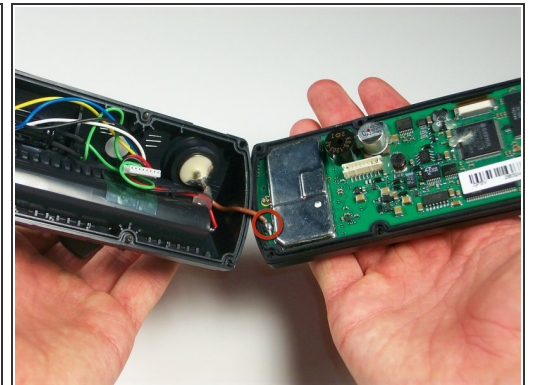
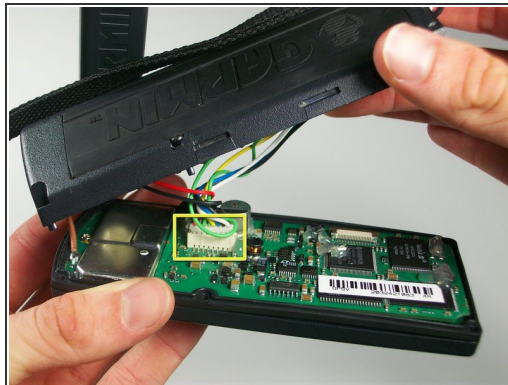
- [Phillips #0 Screwdriver](#) (1)
- [Phillips #1 Screwdriver](#) (1)
- [Soldering Workstation](#) (1)
- [Spudger](#) (1)

Step 1 — Logic Board



- Orient the GPS V backside up.
- With a #0 Philips screwdriver, remove six M2x0.4 black screws on the back of the unit.

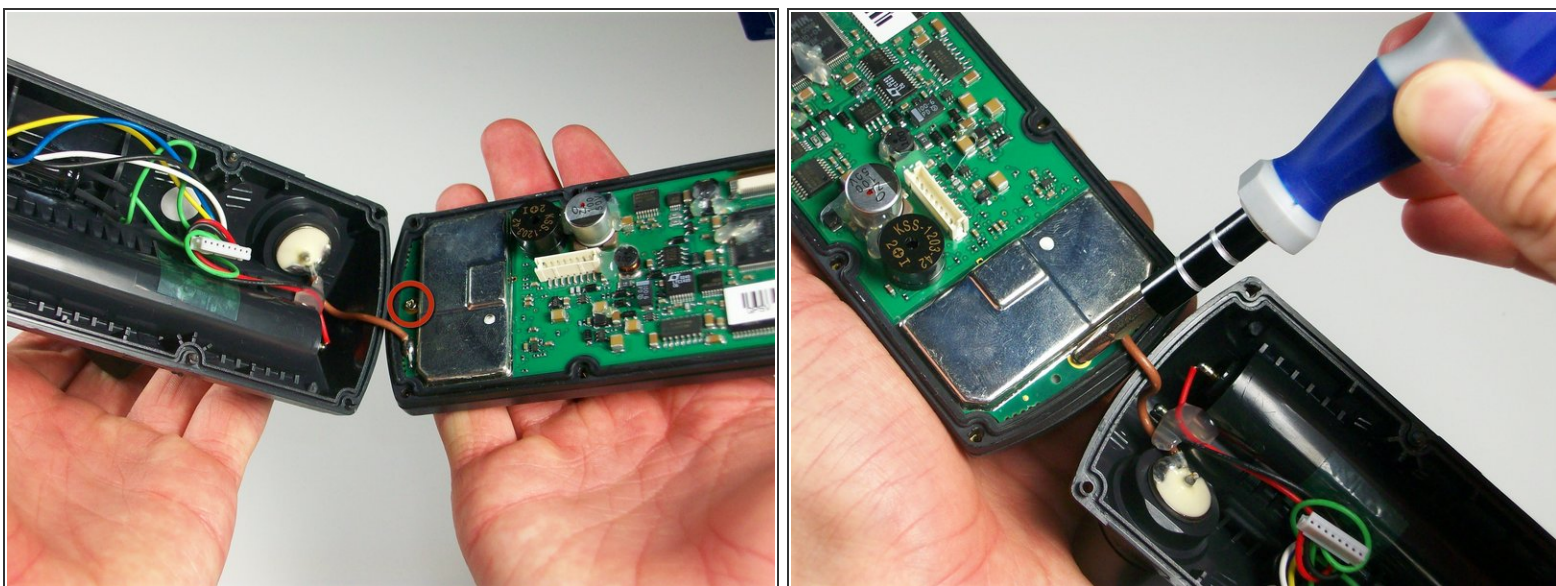
Step 2



⚠ CAUTION: With the spudger, gently pry the back plate off the unit starting at the corners.

- As you open the unit, locate the 8-pin white connector on the logic board and disconnect it. The antenna side of the device should act like a hinge as you open it.
- Open the device all the way, making sure to not disconnect the brown antenna wire.

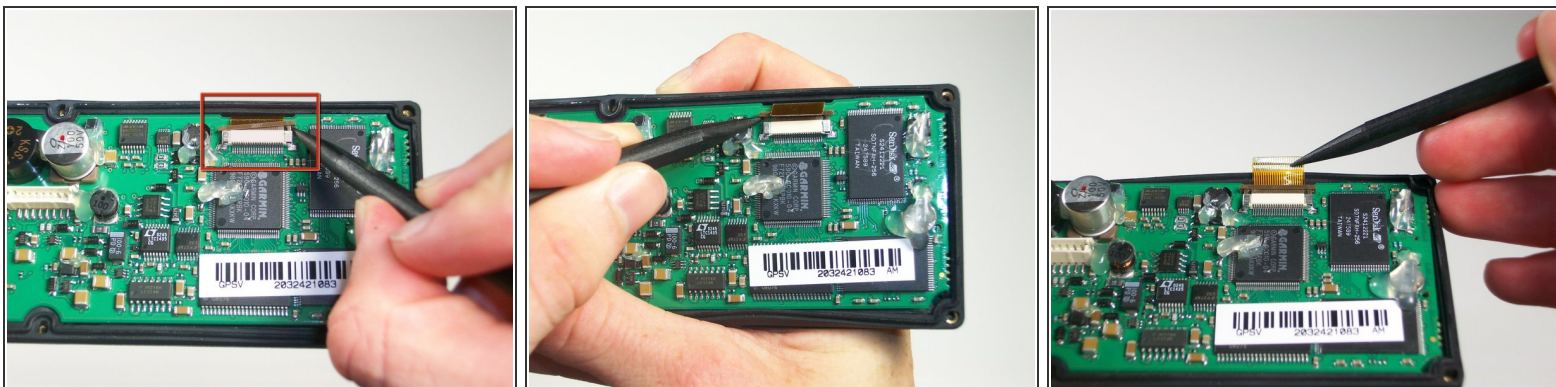
Step 3



- With a #1 Philips screwdriver, remove the silver M2x0.4 screw on the logic board near the brown wire.

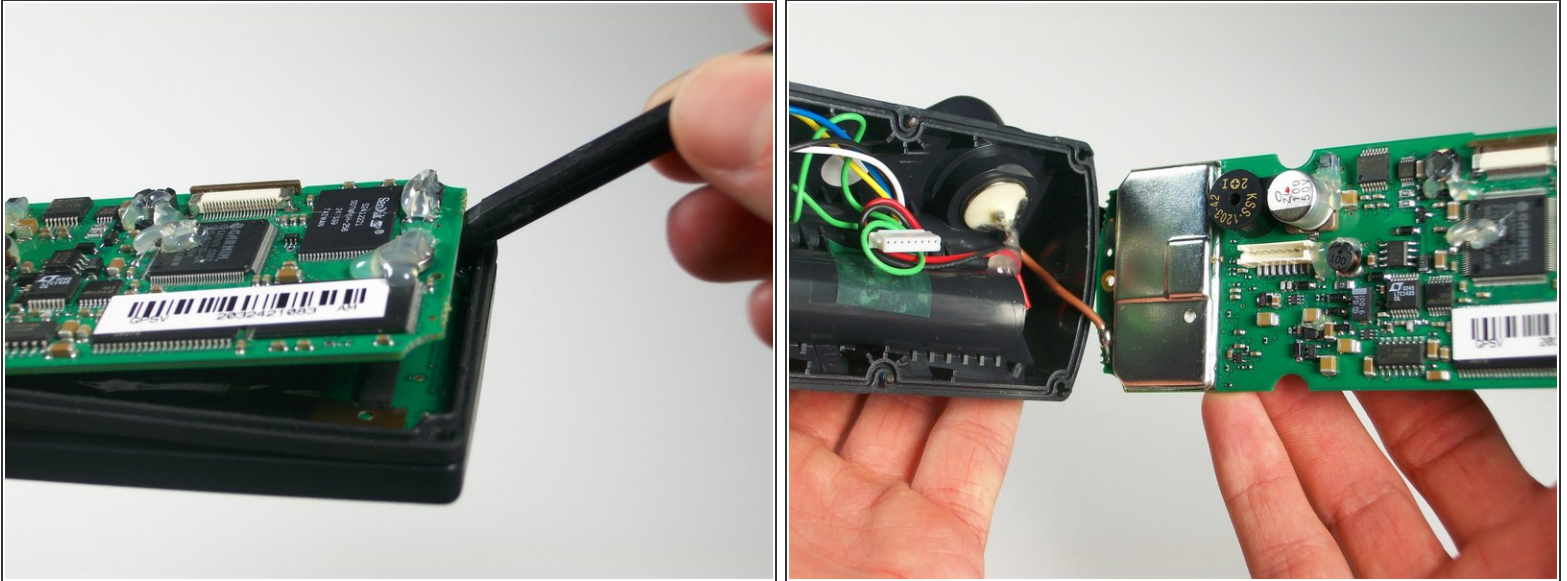
i NOTE: You may need to rotate the device to get better access to the screw.

Step 4



- Locate the ribbon connector on the logic board.
- With the spudger, gently apply pressure to both sides of the brown connector lock until it pushes out.
- With the spudger, gently work the ribbon cable out of the connector until it is free.

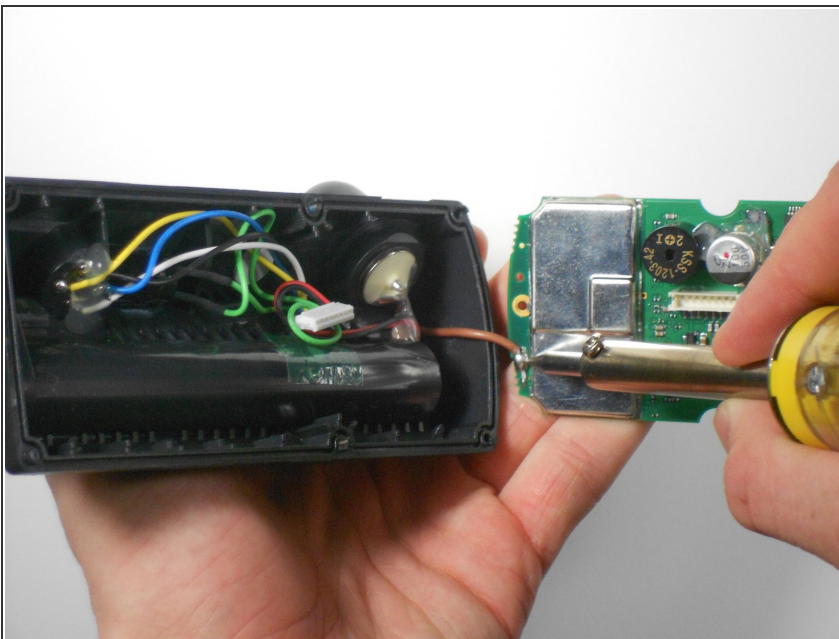
Step 5



⚠ CAUTION: With the spudger, gently pry out the logic board.

i NOTE: Be careful to not disconnect the brown antenna wire as you remove the logic board.

Step 6



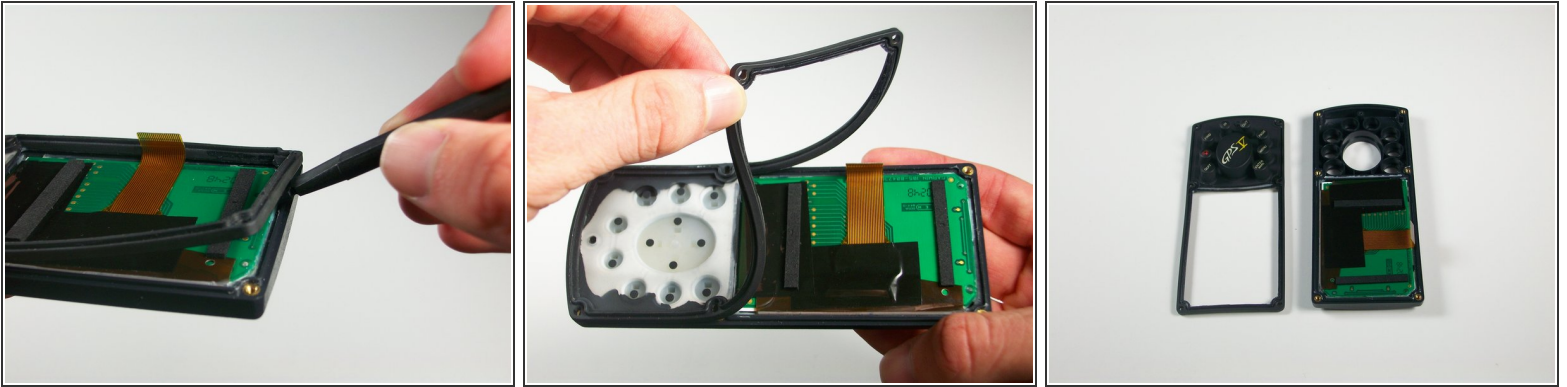
- Locate the brown wire connection on the logic board.

⚠ CAUTION: Carefully apply heat with the soldering iron while gently pulling on the brown wire.

i NOTE: It may take some time to heat the flux up before the wire can be pulled out.

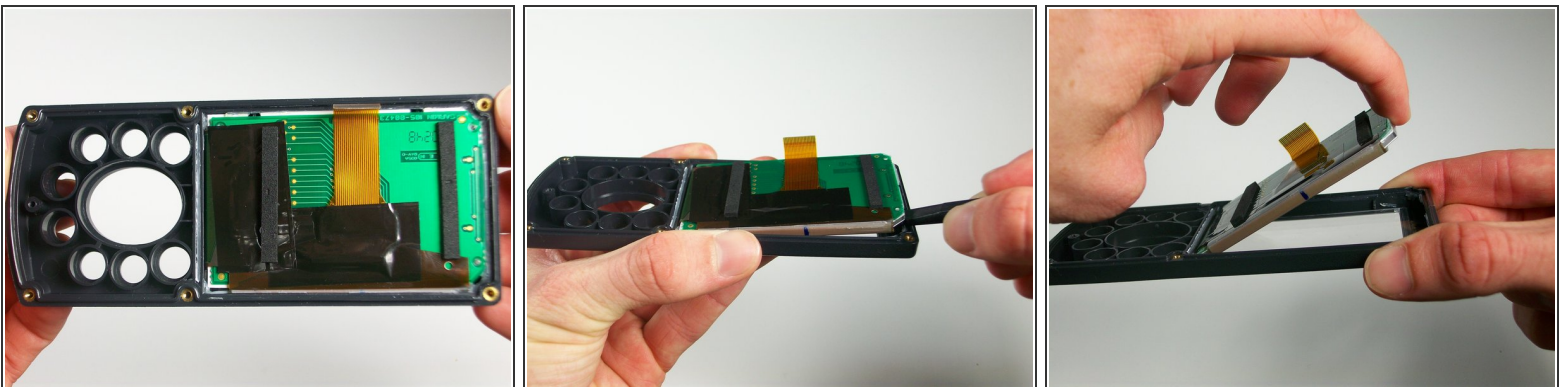
- Pull brown wire free of the logic board.

Step 7 — Button Pad



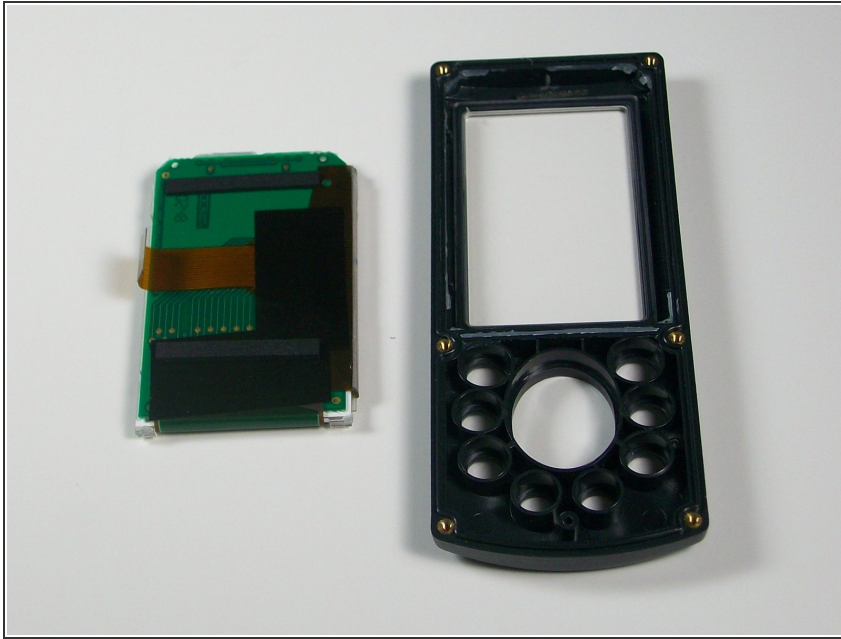
- Gently pry the button pad off of the front plate.

Step 8 — Display



- Orient the front plate of the device so the display board is facing up.
- With the spudger, gently work your way around the display assembly.
- ⓘ NOTE: The display assembly is composed of three parts and is glued to the case. Be careful to not separate it when prying it out.
- Pry the display free of the front plate.

Step 9 — Front Plate



- With the display removed, the front case of the Garmin GPS can be replaced.

To reassemble your device, follow these instructions in reverse order.