



Garmin Nüvi 205W LCD Display Replacement

Replacing Garmin Nüvi 205W LCD Display

Written By: oldturkey03



INTRODUCTION

This Garmin had a cracked front glass/digitizer. Due to cost effectiveness I replaced the complete front panel. Replacement cost \$20.



TOOLS:

- [iFixit Opening Tools](#) (1)
 - [T5 Torx Screwdriver](#) (1)
-

Step 1 — LCD Display



- The cracked screen is clearly visible. LCD is still functioning, but obviously no touch function.
- Remove the holder as well as the power cord from the back of the GPS unit.
- The Nüvi uses two screws that are hidden underneath the label on the bottom.

Step 2



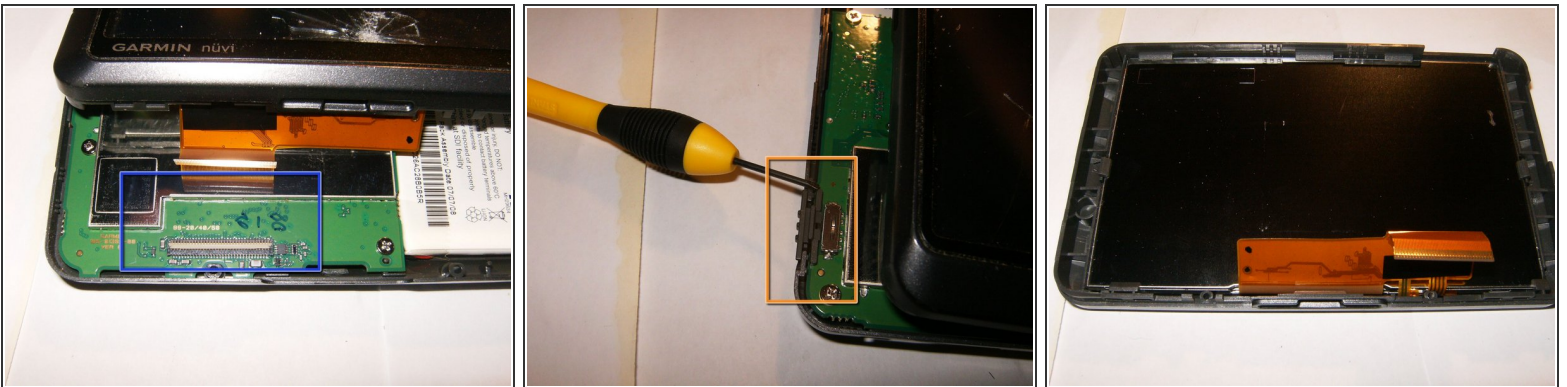
- Remove the label, then remove the two Torx T5 screws
- Use a plastic opening tool to start splitting the front and back case.
- Work your way around the separation line, gently applying continuous pressure to the back case.

Step 3



- Once the front and back case are split, do not yet totally remove it. The LCD is still attached via a ribbon cable.
- The ribbon cable and connector are covered with a strip of Kapton tape
- Remove the tape. Use the plastic opening tool, or any other appropriate tool (i.e. guitar pick, fingernails etc), to remove the tape.

Step 4



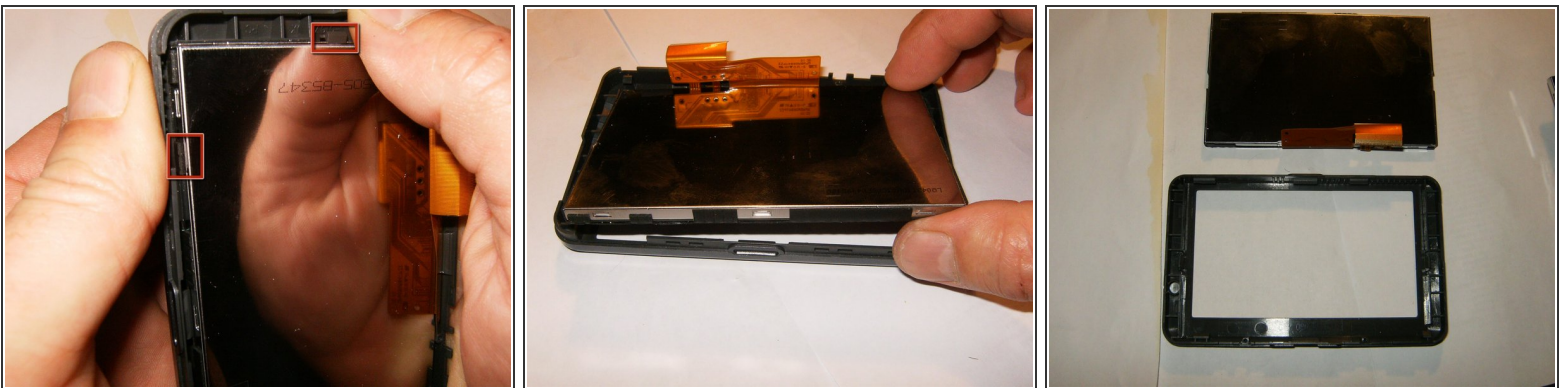
- Once the tape is removed, flip the white clasp open, by moving it away from the cable end, disconnect the LCD.
- Remove the On/Off switch
- Remove the complete front assembly.

Step 5



- The LCD assembly is held in the front bezel by seven plastic tabs.
- Move those tabs slightly back while applying pressure from the opposite side (front of the LCD)
- Continue to push the tabs on the bezel away from the LCD assembly, pushing the LCD away from the bezel

Step 6



- Ensure that the LCD assembly clears all the tabs.
- Remove the LCD from the front bezel
- Totally separate the assembly from the bezel. Now it is time to replace it with a new assembly.

To reassemble your device, follow these instructions in reverse order.