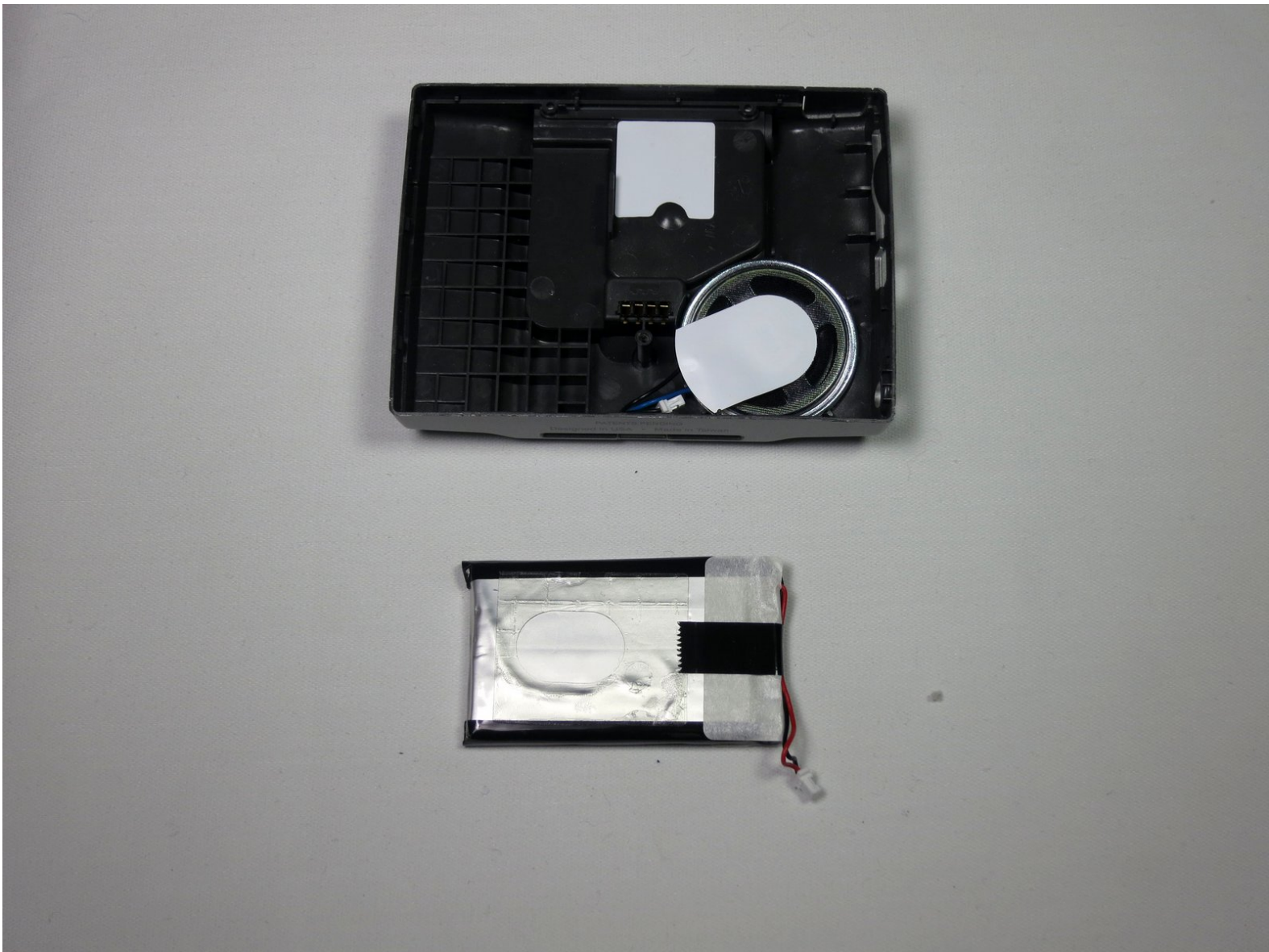




# Garmin Nüvi 370 Battery Replacement

This step by step guide will show you how to disassemble your Garmin Nüvi 370 in order to access and replace the battery.

Written By: poopspeedstream



## INTRODUCTION

In this guide the repairer replaces the battery of the device by disassembling it to expose the motherboard, which in turn allows access to the battery.

### Prerequisite Guide:

[Disassembling Garmin Nuvi 370 Into Core Components](#)

### Tools Used:

- Fine Point Tweezers
- Spudger

**Estimated Duration:** 10 minutes



### TOOLS:

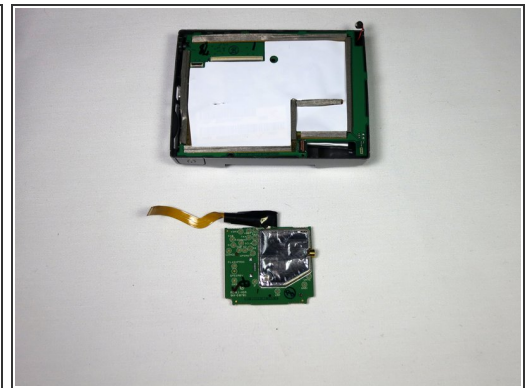
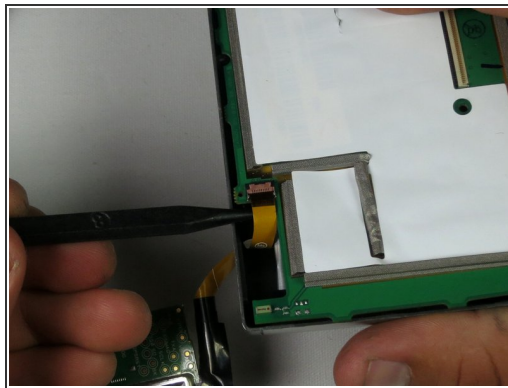
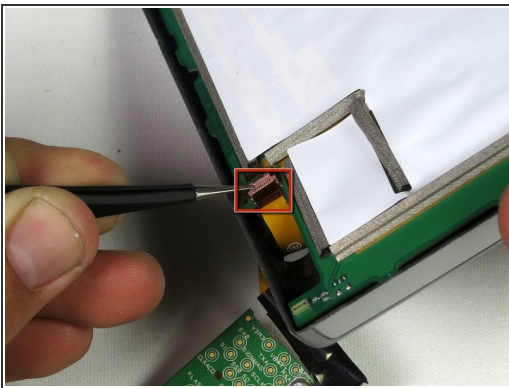
- [Tweezers](#) (1)
  - [Spudger](#) (1)
-

## Step 1 — Battery



- After following the instructions in the [main dis-assembly guide](#), you should have the screen detached from the motherboard.

## Step 2



- Use the tweezers or the spudger to lift the tan latch off the ribbon cable (ZIF connector) and gently pull out the ZIF connector and cable from underneath the opened latch.



### Step 3



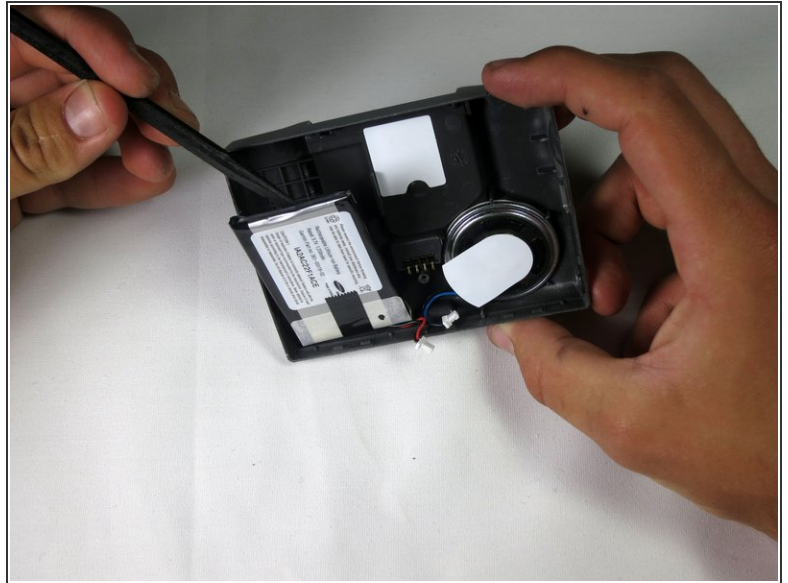
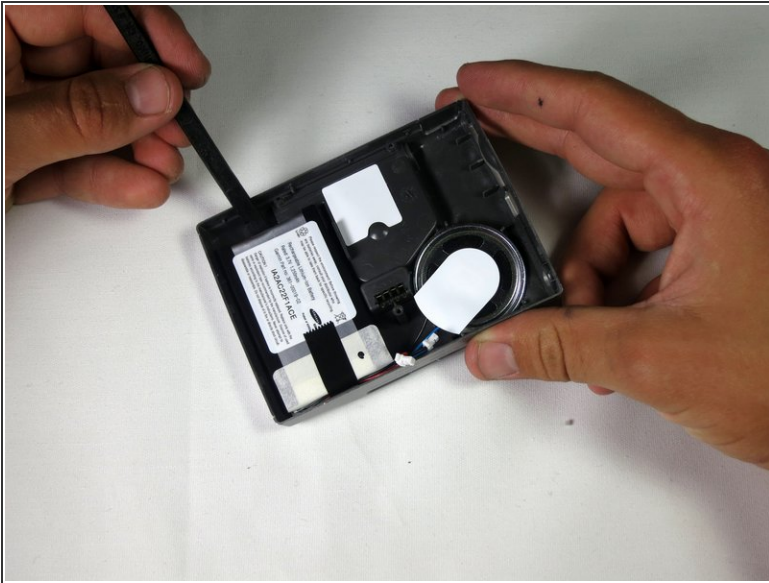
- The motherboard will now freely separate from the back casing; lay it flat next to the housing.

### Step 4



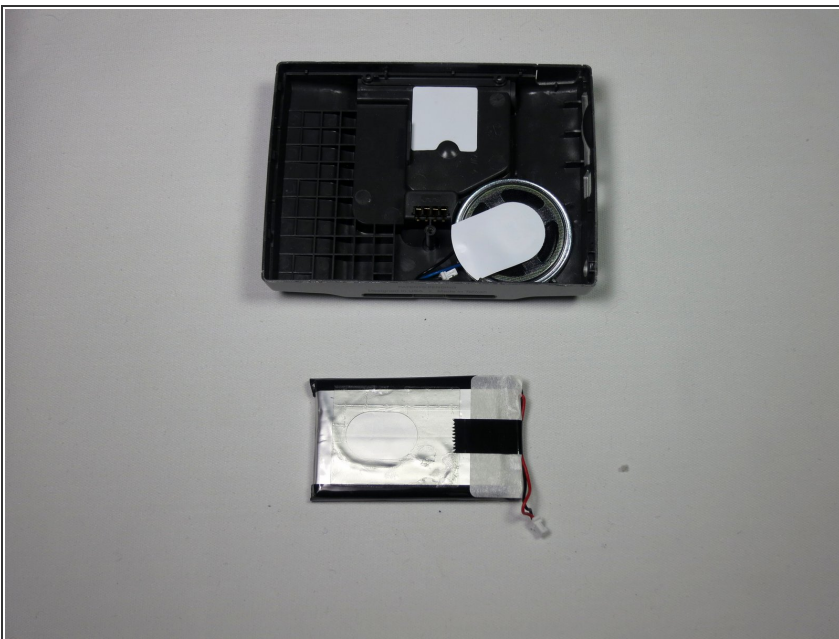
- Disconnect the speaker and battery from their terminals on the motherboard. This should disconnect the motherboard completely from the back panel.
- It is recommended that you use tweezers or the spudger for precision.

## Step 5



- Using the flat edge of the spudger from above, gently pry the battery away from the plastic.

## Step 6



- The battery should now be completely separated from the other components.
- Insert new, functional battery.

To reassemble your device, follow these instructions in reverse order.