



Garmin Nüvi 370 LCD Display Replacement

This step by step guide will show you how to disassemble your Garmin Nüvi 370 in order to access and replace the LCD display.

Written By: Matt West



INTRODUCTION

In this guide the repairer replaces the LCD display of the device by carefully prying apart the components with one's hands.

Prerequisite Guide:

[Disassembling Garmin Nuvi 370 Into Core Components](#)

Tools Used:

- None

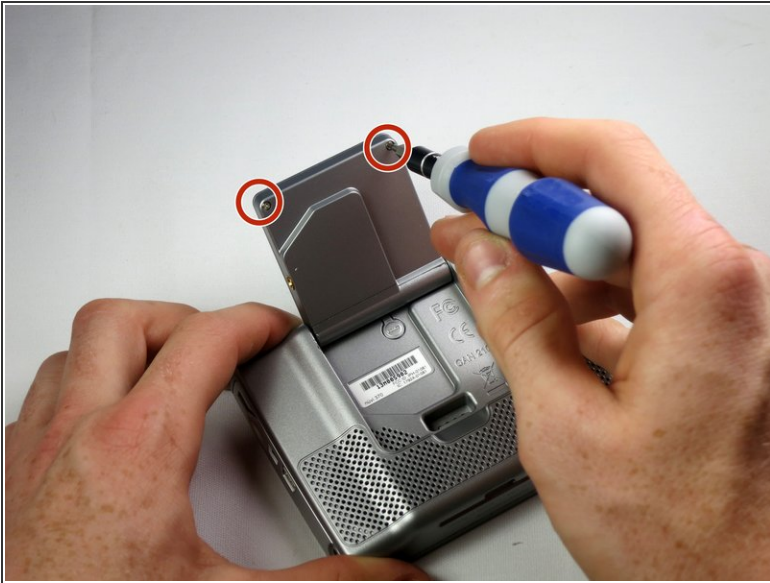
Estimated Duration: 5 minutes



TOOLS:

- [T5 Torx Screwdriver](#) (1)
 - [iFixit Opening Tools](#) (1)
 - [Phillips-head Driver](#) (1)
- Phillips-head Driver
- [Fine Tip Tweezers](#) (1)
-

Step 1 — Into Core Components



- Unscrew the two screws on the antenna unit using a torc-head screwdriver.
 - ⓘ The Torx-Head Screws' size is T-5, which is about 1.5mm.
- Gently pry open the antenna unit with your fingers.
 - ⚠ Be careful and try not to damage the small plastic tab.

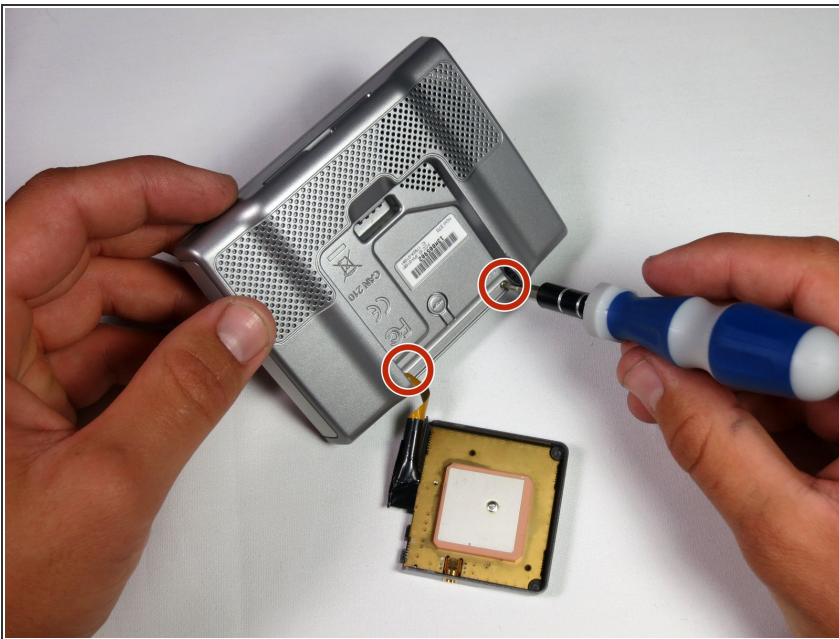
Step 2



- Slide out the inner casing attached to the antenna body.
- Remove the rotating joint connecting the antenna casing to the main device:
 - Squeeze tweezers into the shown location and compress the spring.
 - Lift out the outer casing while keeping the spring compressed.

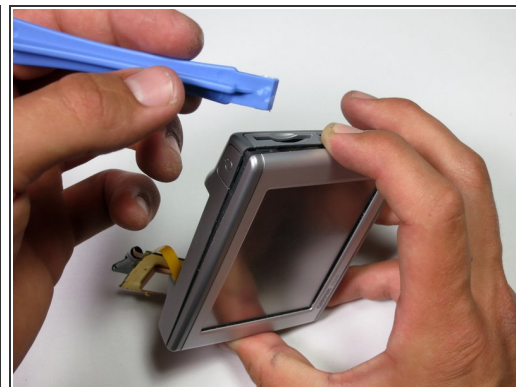
⚠ watch out, as the spring loaded portion may fly out unexpectedly.

Step 3



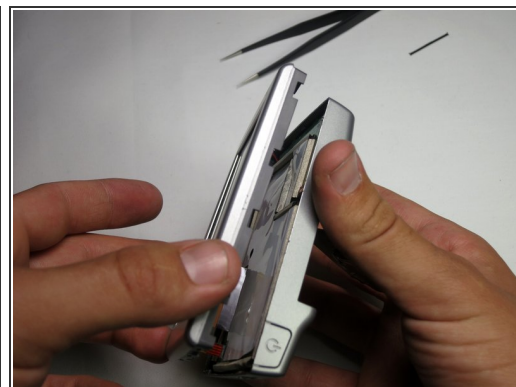
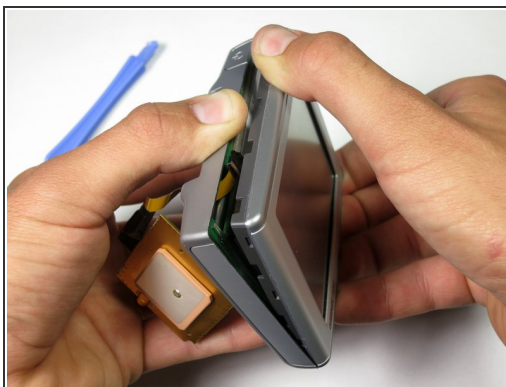
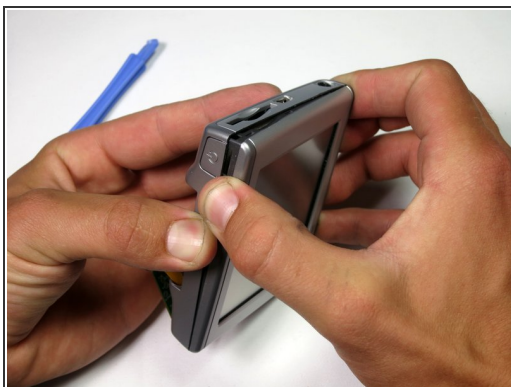
- Using a torx-head screwdriver, unscrew the two revealed screws that connect the front and back of the device.
- ⓘ The Torx-Head Screws' size is T-5, which is about 1.5mm.

Step 4



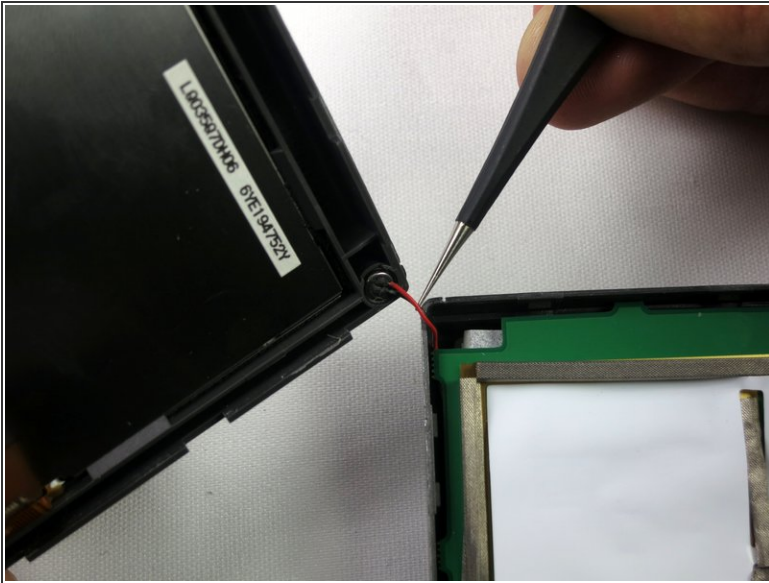
- Insert the plastic opening tool into the center of the edge as shown in first picture.
- Slide the plastic opening tool along the central gap of device, making sure that each edge is free, as shown in the second picture.

Step 5



- Detach the front display from the back panel of the device.

Step 6



- Using tweezers, gently lift the microphone from its resting position to fully separate the device into two parts.
- Finally, remove the screw that connects the motherboard to the back casing with a 3mm head driver.

Step 7 — LCD Display



- After following the instructions in the [main dis-assembly guide](#), you should have the screen detached from the motherboard.

Step 8



- Hold the front panel plastic and screen as shown.
- Gently apply pressure on the left and top left corner to allow the screen to come out of the plastic shell.

Step 9



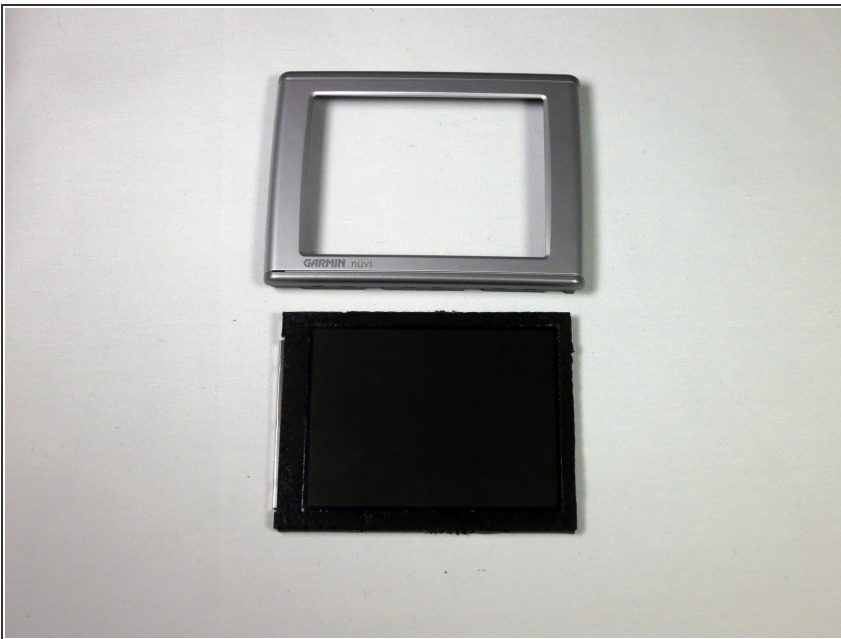
- Once the top-left corner is out, carefully start detaching the bottom of the screen, starting from the bottom left.

Step 10



- Finally, gently pull the screen out of the right side of the plastic shell.

Step 11



- The screen should now be completely detached.
- Insert new, functional display screen.

To reassemble your device, follow these instructions in reverse order.