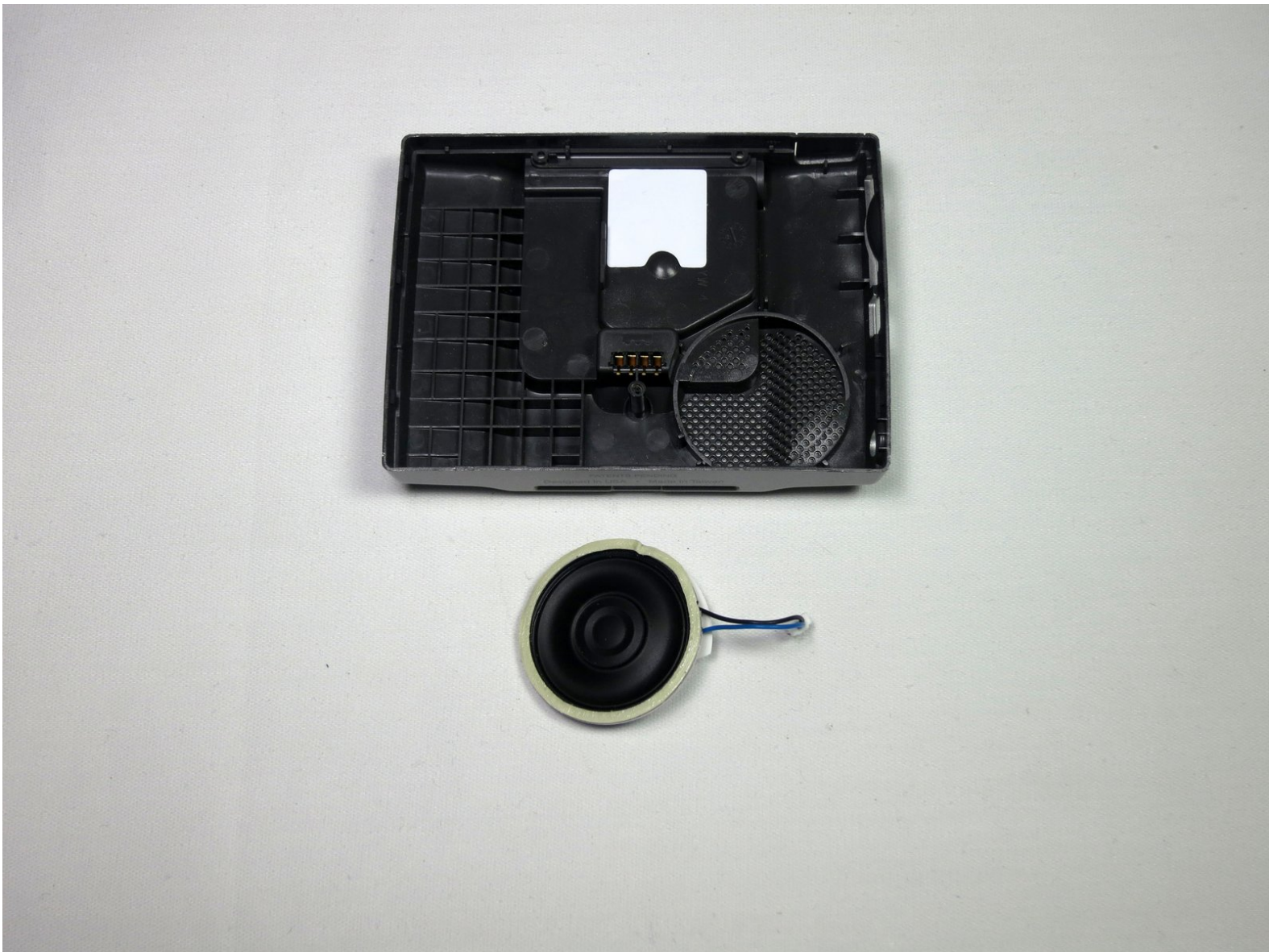




Garmin Nüvi 370 Speaker Replacement

This step by step guide will show you how to disassemble your Garmin Nüvi 370 in order to access and replace the Speaker.

Written By: Matt West



INTRODUCTION

In this guide the repairer replaces the speaker of the device by disassembling the device further to expose the motherboard and speaker.

Prerequisite Guide:

[Disassembling Garmin Nuvi 370 Into Core Components](#)

Tools Used:

- Fine Point Tweezers
- Spudger

Estimated Duration: 10 minutes



TOOLS:

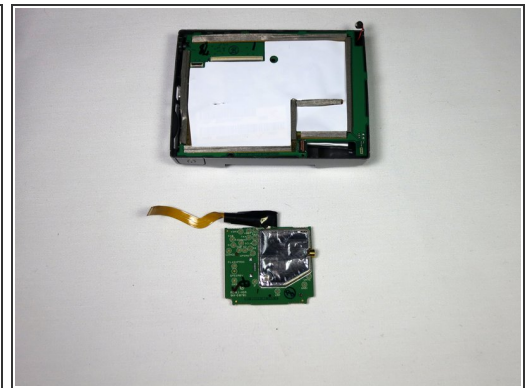
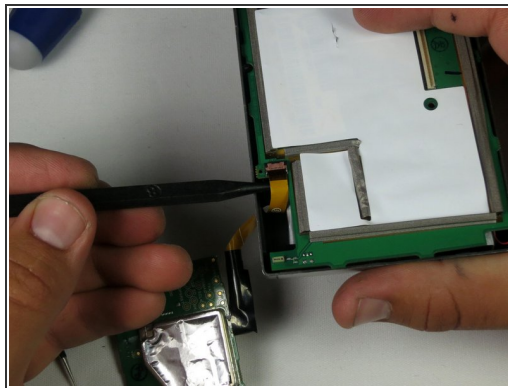
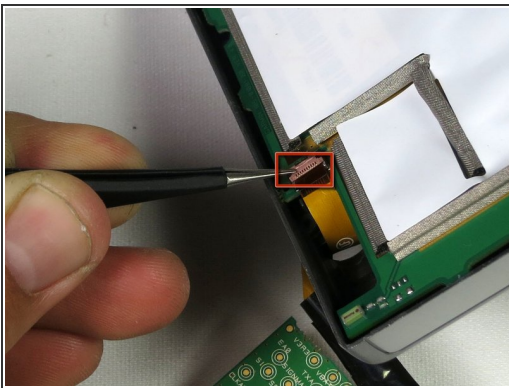
- [Tweezers](#) (1)
-

Step 1 — Speaker



- After following the instructions in the [main dis-assembly guide](#), you should have the screen detached from the motherboard.

Step 2



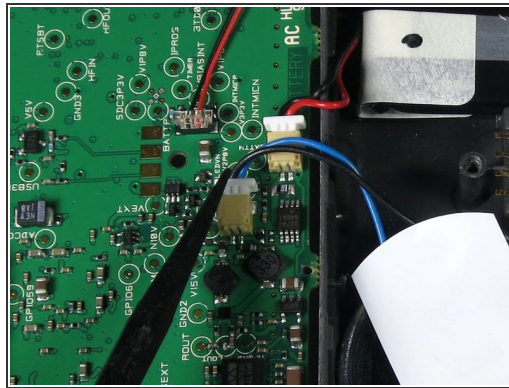
- Use the tweezers or the spudger to lift the tan latch off the ribbon cable (ZIF connector) and gently pull out the ZIF connector and cable from underneath the opened latch.

Step 3



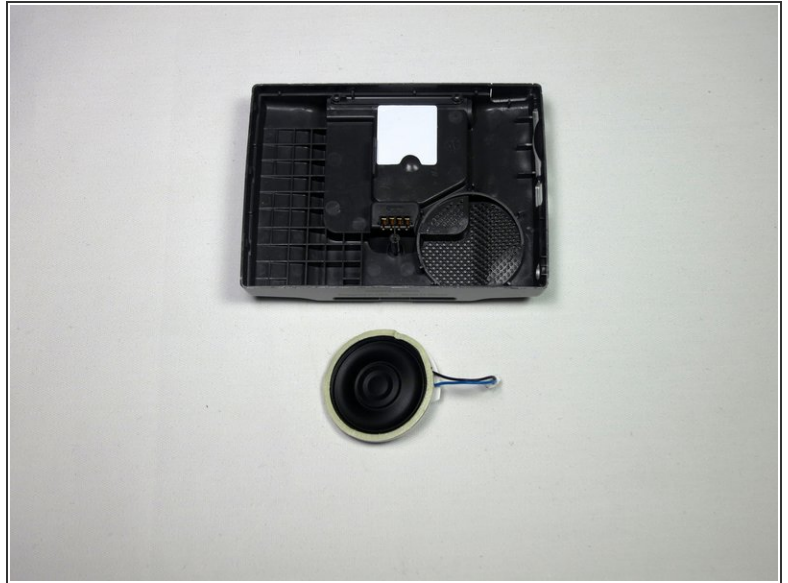
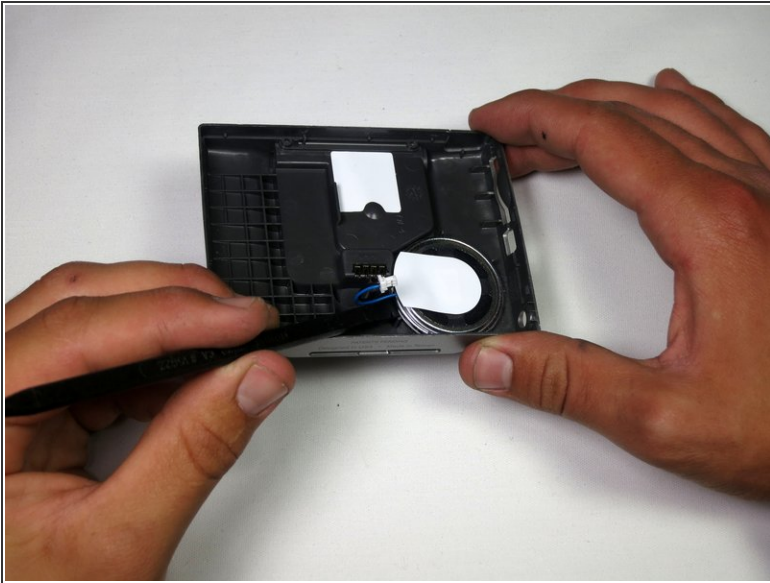
- The motherboard will now freely separate from the back casing; lay it flat next to the housing.

Step 4



- Detach blue speaker cable from motherboard.
- ⓘ Battery cable is detached in this picture, and it is not required to do so to install a new speaker.

Step 5



- Detach speaker from casing and insert new, functional speaker.
- ⓘ Battery is removed in the picture and is not required for the installation of a new speaker.

To reassemble your device, follow these instructions in reverse order.