



Garmin Nüvi 52LM Battery Replacement

This guide will walk you through the steps to replace the Garmin Nüvi 52LM battery.

Written By: Camron Dennler



INTRODUCTION

This walkthrough will instruct you on how to disassemble the device, remove the battery, and replace it.



TOOLS:

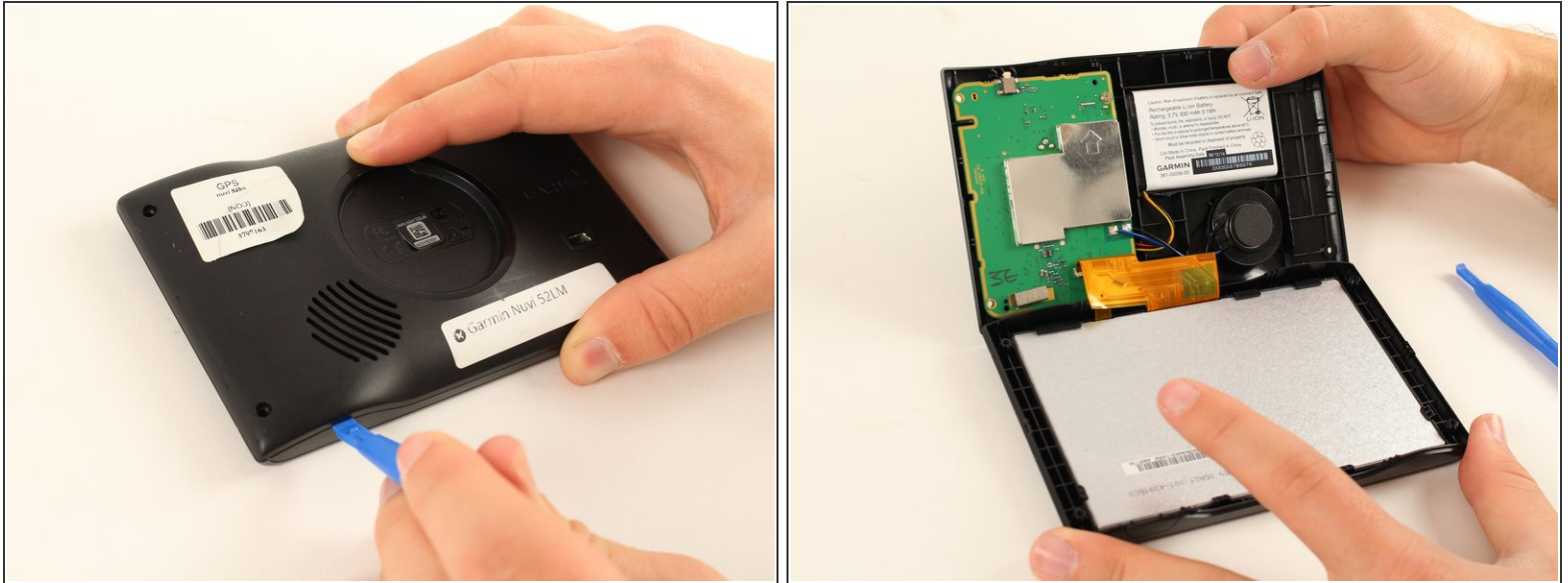
- [iFixit Opening Tools](#) (1)
 - [T5 Torx Screwdriver](#) (1)
-

Step 1 — Garmin Nüvi 52LM Disassembly



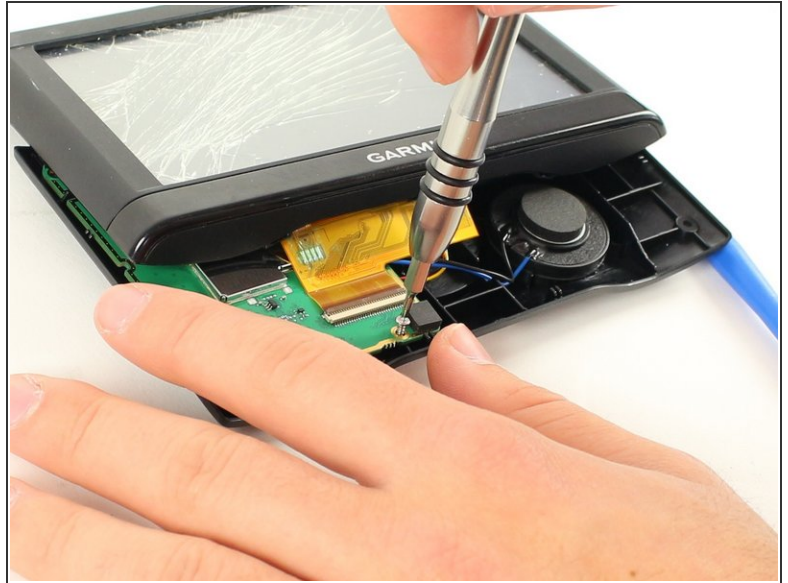
- Place the device face-down, with the screen facing the surface. There are **8.7mm** screws located in each of the back 4 corners of the device. Using a T5 Torx screw bit, unscrew all four screws and leave them aside.

Step 2



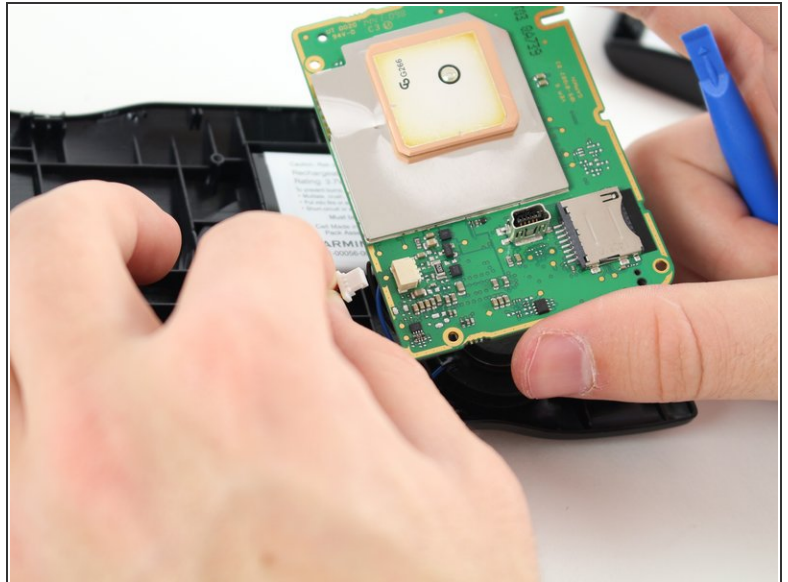
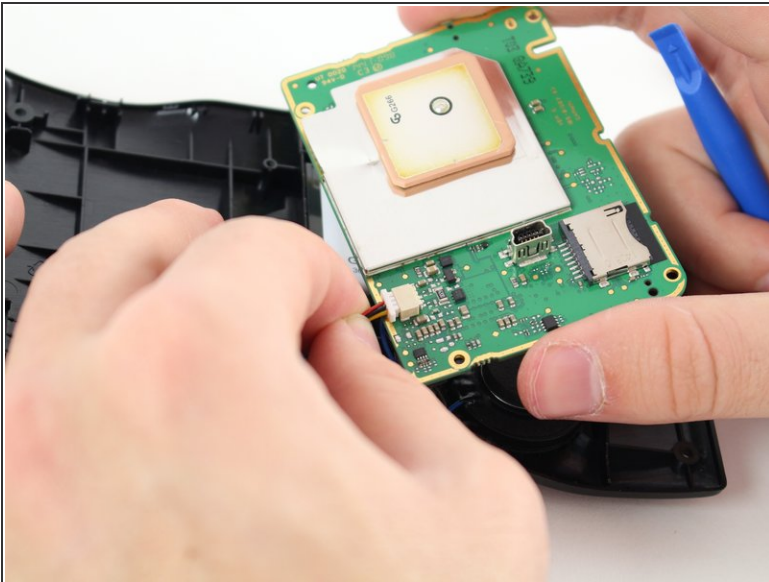
- Place a plastic opening tool in the seam between the back and front plates of the device. Using constant pressure, slowly and continuously slide the tool along the seam. The tool should disable each of the hooks holding the two plates together. If unsuccessful, apply slightly more pressure and try again.
- Once all hooks are disabled, slowly separate the two plates, being careful not to damage the ribbon wire still connecting the two.

Step 3 — Battery



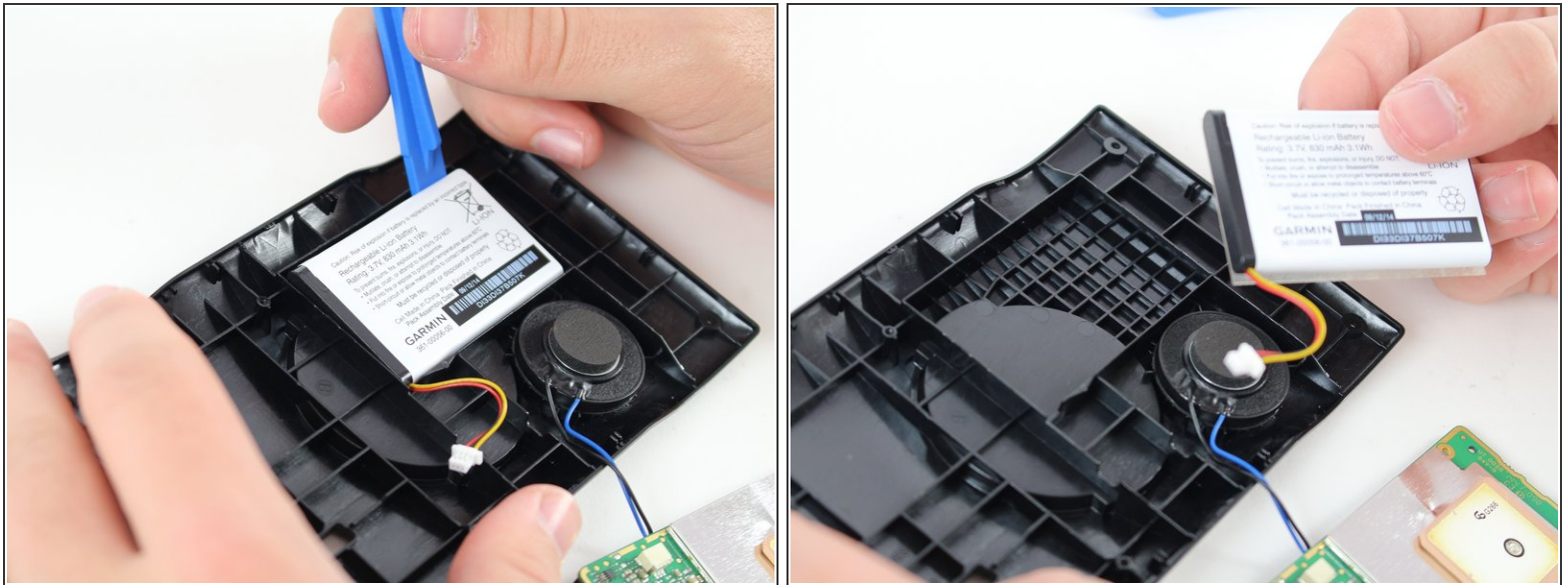
- Using the T5 Torx screwdriver, unscrew the two **5.6mm** screws at the top right and bottom right corners of the motherboard.

Step 4



- Gently unplug the wire connecting the battery to the small socket on the back of the motherboard.

Step 5



- Using a plastic opening tool, pry the battery from the back cover of the device. There may be an adhesive sticker keeping it in place, so you may need to apply some force.
- The battery should now be completely detached from the other parts.

To reassemble your device, follow these instructions in reverse order.