



Garmin Nüvi 52LM Disassembly

This guide will demonstrate how to remove the back of the Garmin in order to access the other parts.

Written By: Diya Jamwal



INTRODUCTION

This guide acts as a preliminary guide for other guides. Other repair guides will require these steps, in order to open up the device and access the inner parts for repair.



TOOLS:

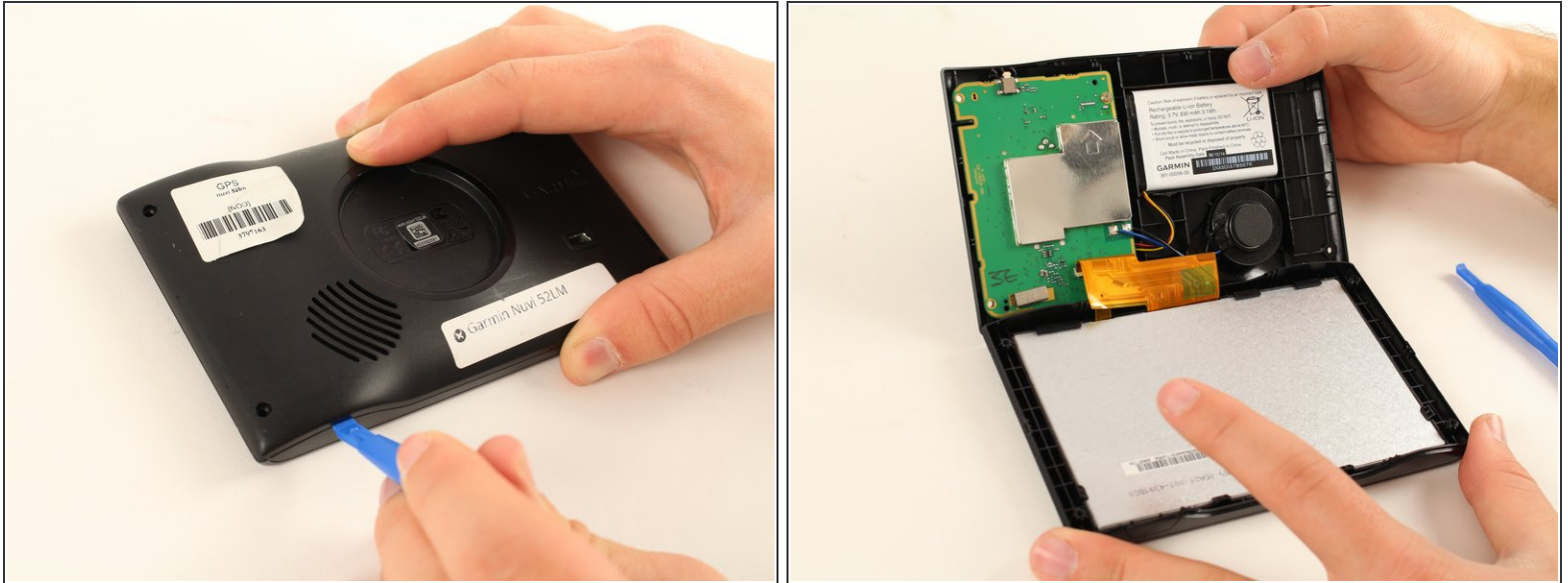
- [T5 Torx Screwdriver](#) (1)
 - [iFixit Opening Tools](#) (1)
-

Step 1 — Garmin Nüvi 52LM Disassembly



- Place the device face-down, with the screen facing the surface. There are **8.7mm** screws located in each of the back 4 corners of the device. Using a T5 Torx screw bit, unscrew all four screws and leave them aside.

Step 2



- Place a plastic opening tool in the seam between the back and front plates of the device. Using constant pressure, slowly and continuously slide the tool along the seam. The tool should disable each of the hooks holding the two plates together. If unsuccessful, apply slightly more pressure and try again.
- Once all hooks are disabled, slowly separate the two plates, being careful not to damage the ribbon wire still connecting the two.

To reassemble your device, follow these instructions in reverse order.