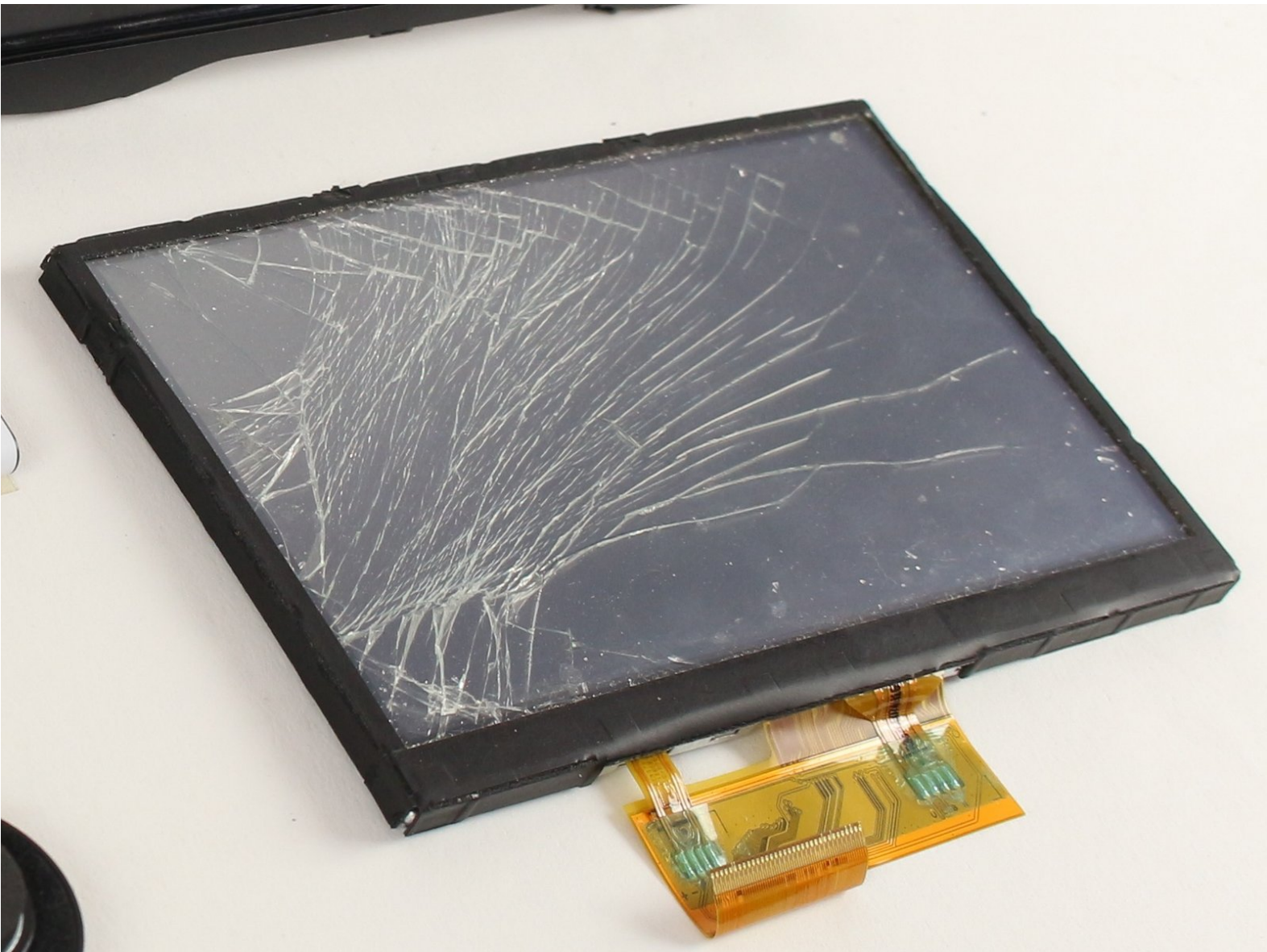




Garmin Nüvi 52LM LCD and Digitizer Replacement

This guide walks you through the process of replacing the LCD and Digitizer system in the Garmin Nüvi 52LM.

Written By: Blaine Francis



INTRODUCTION

This step-by-step guide walks you through the process of replacing your screen component on your Garmin Nüvi 52LM.

TOOLS:

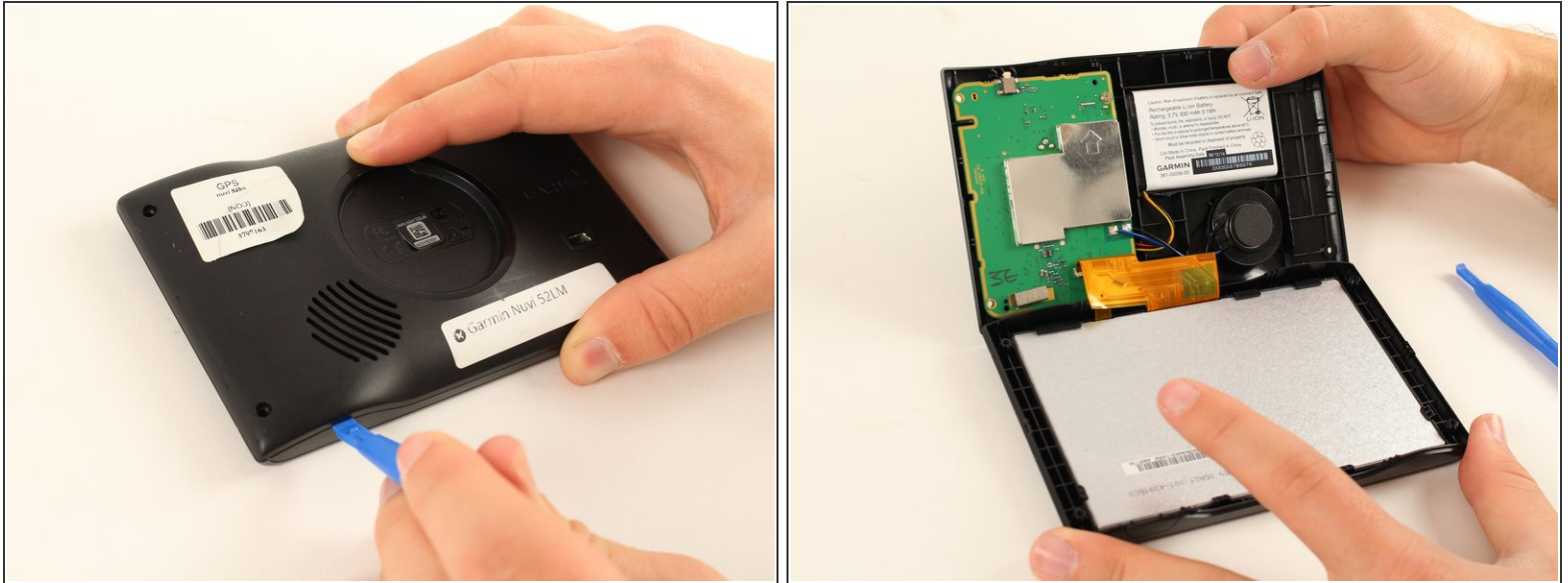
- [iFixit Opening Tools](#) (1)
 - [T5 Torx Screwdriver](#) (1)
-

Step 1 — Garmin Nüvi 52LM Disassembly



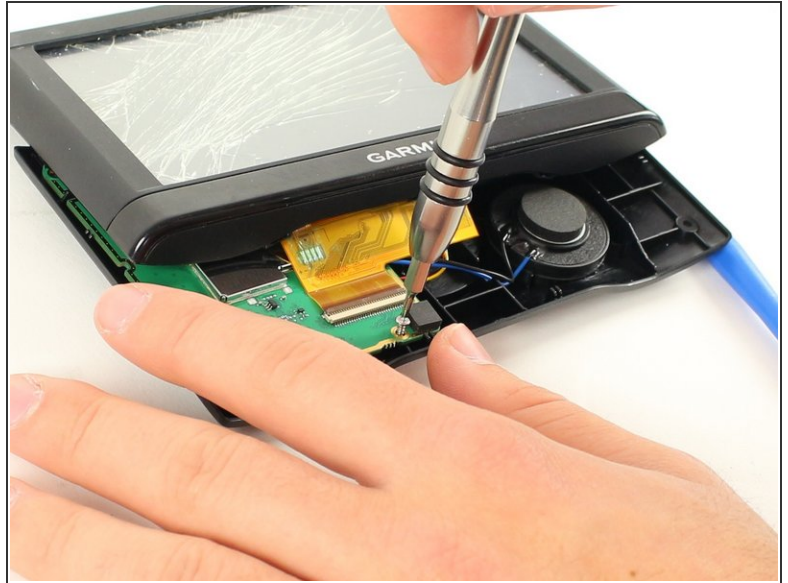
- Place the device face-down, with the screen facing the surface. There are **8.7mm** screws located in each of the back 4 corners of the device. Using a T5 Torx screw bit, unscrew all four screws and leave them aside.

Step 2



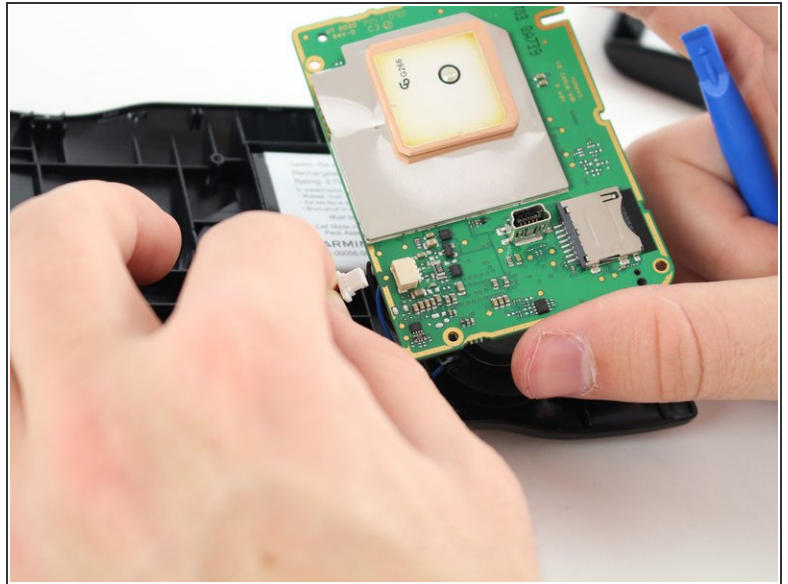
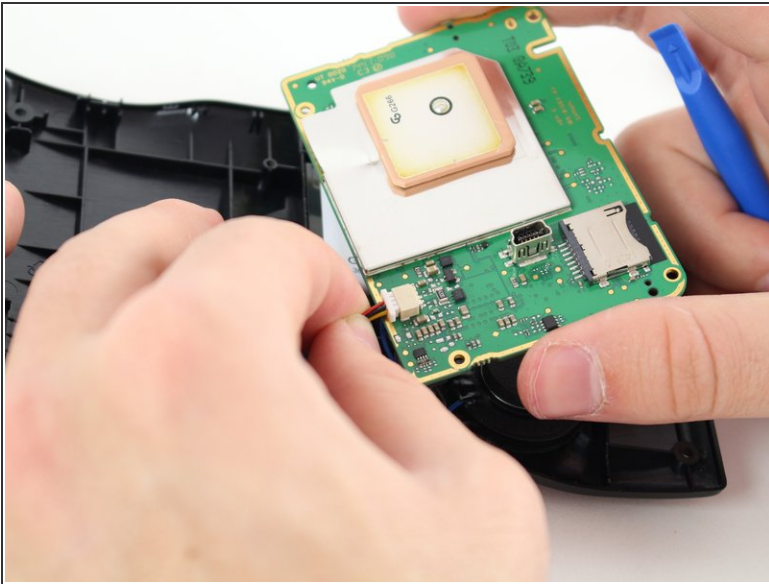
- Place a plastic opening tool in the seam between the back and front plates of the device. Using constant pressure, slowly and continuously slide the tool along the seam. The tool should disable each of the hooks holding the two plates together. If unsuccessful, apply slightly more pressure and try again.
- Once all hooks are disabled, slowly separate the two plates, being careful not to damage the ribbon wire still connecting the two.

Step 3 — Battery



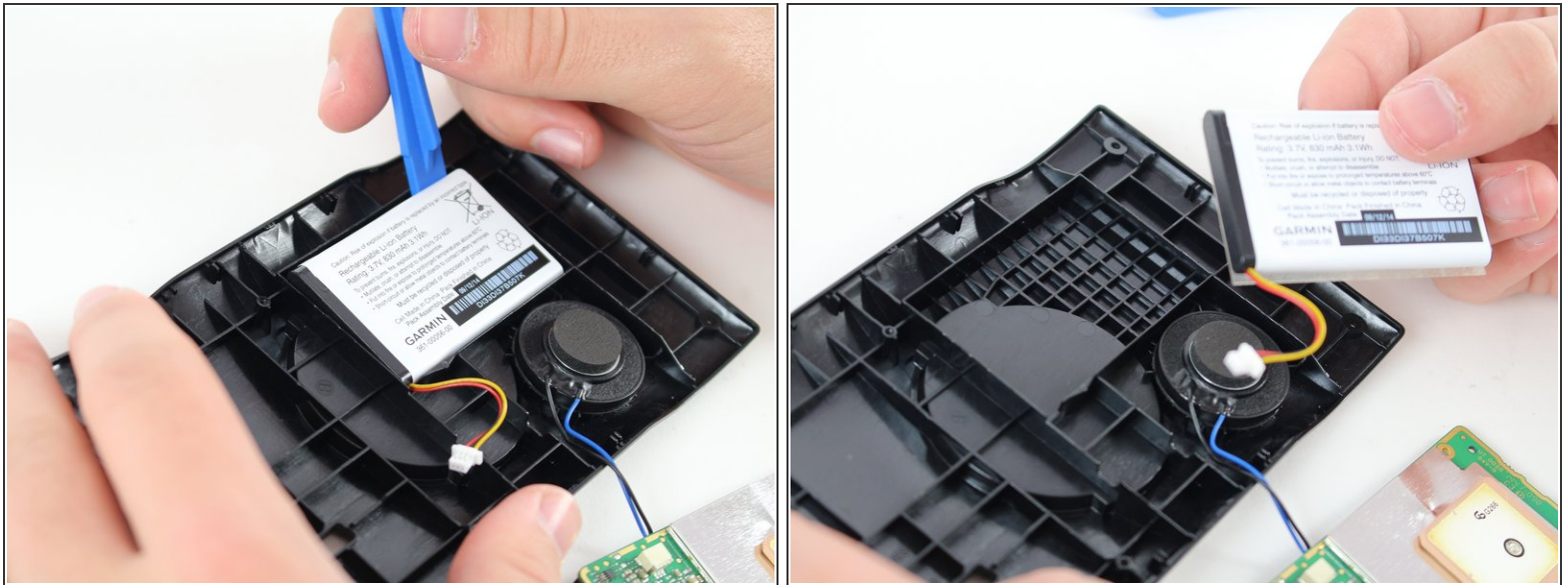
- Using the T5 Torx screwdriver, unscrew the two **5.6mm** screws at the top right and bottom right corners of the motherboard.

Step 4



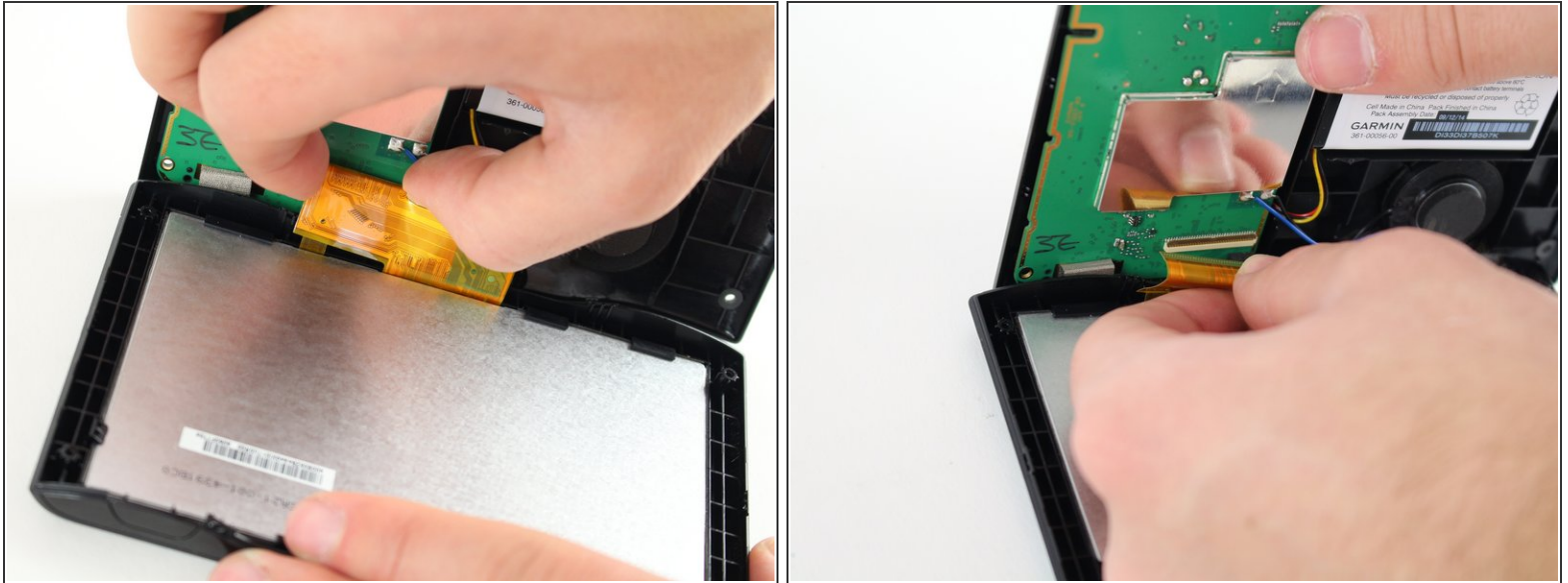
- Gently unplug the wire connecting the battery to the small socket on the back of the motherboard.

Step 5



- Using a plastic opening tool, pry the battery from the back cover of the device. There may be an adhesive sticker keeping it in place, so you may need to apply some force.
- The battery should now be completely detached from the other parts.

Step 6 — LCD and Digitizer



- On the motherboard, lift the small plate that holds the orange ribbon wire in place.
- Gently disconnect the ribbon wire from its connection to the motherboard.

Step 7



- Using a moderate amount of force, pull each of the triangular hooks holding the screen in place away.
- Once all of the triangular hooks are off of the screen, slide the device out of the case, pulling away from the rectangular hooks at the bottom.
- The screen and digitizer should now be completely detached from the other parts of the device, and a new one can now be placed.

This document was generated on 2019-10-12 06:57:58 PM (MST).

To reassemble your device, follow these instructions in reverse order.