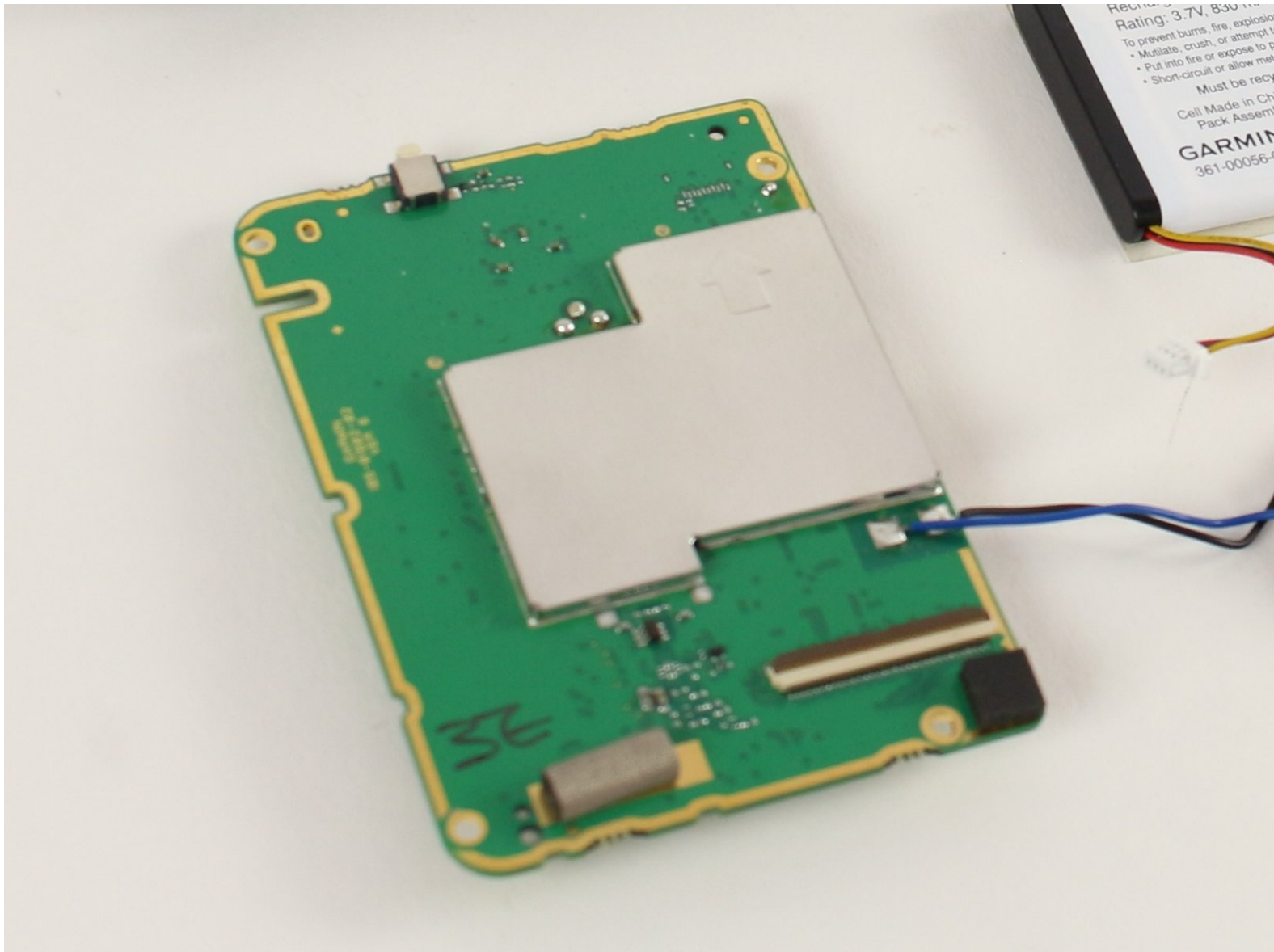




# Garmin Nüvi 52LM USB Charge Port Replacement

This guide will show you how to replace the USB charge port on your Garmin Nüvi 52LM.

Written By: Scott Seno



---

## INTRODUCTION

In this guide you will replace the motherboard of your device, which contains your broken USB Charge Port component. Since this part is soldered directly to the motherboard, the entire system must be replaced (unless you are proficient in soldering, that is). Since this component isn't related to the micro SD card port, it is recommended that you get what data you can off of the device, because replacing the motherboard means losing all memory.



### TOOLS:

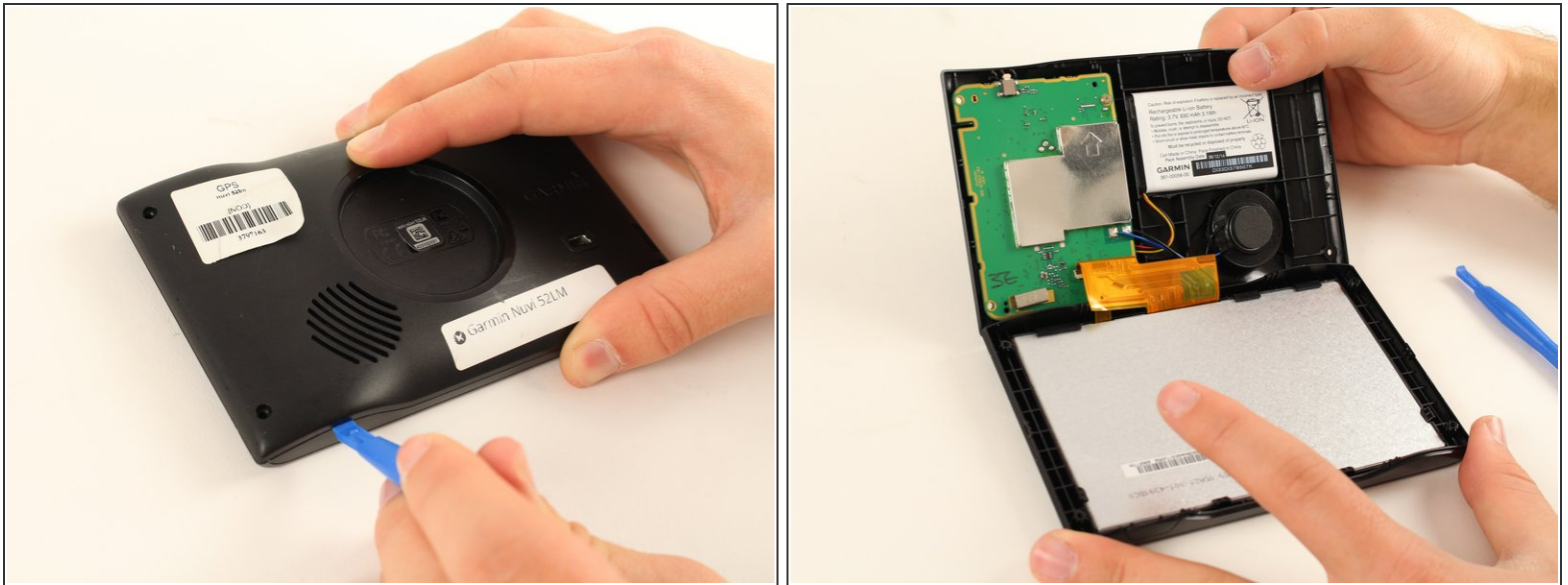
- [iFixit Opening Tools](#) (1)
  - [T5 Torx Screwdriver](#) (1)
-

## Step 1 — Garmin Nüvi 52LM Disassembly



- Place the device face-down, with the screen facing the surface. There are **8.7mm** screws located in each of the back 4 corners of the device. Using a T5 Torx screw bit, unscrew all four screws and leave them aside.

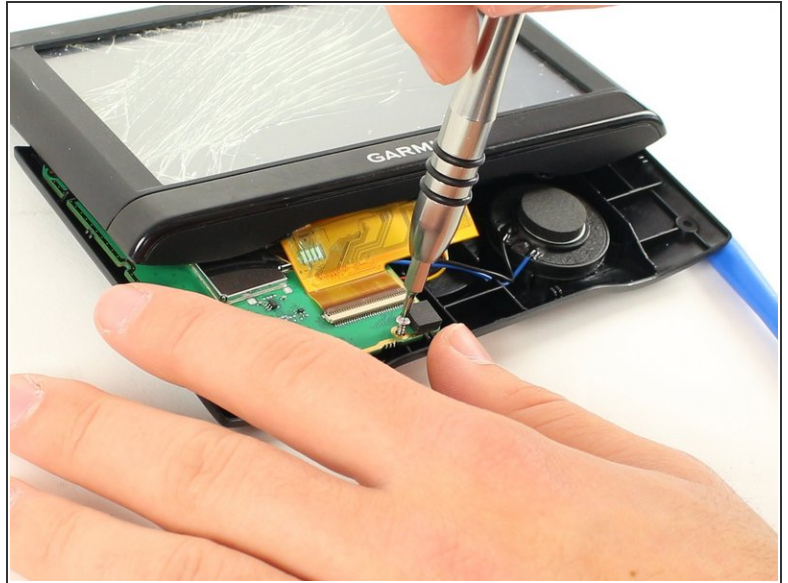
## Step 2



- Place a plastic opening tool in the seam between the back and front plates of the device. Using constant pressure, slowly and continuously slide the tool along the seam. The tool should disable each of the hooks holding the two plates together. If unsuccessful, apply slightly more pressure and try again.
- Once all hooks are disabled, slowly separate the two plates, being careful not to damage the ribbon wire still connecting the two.

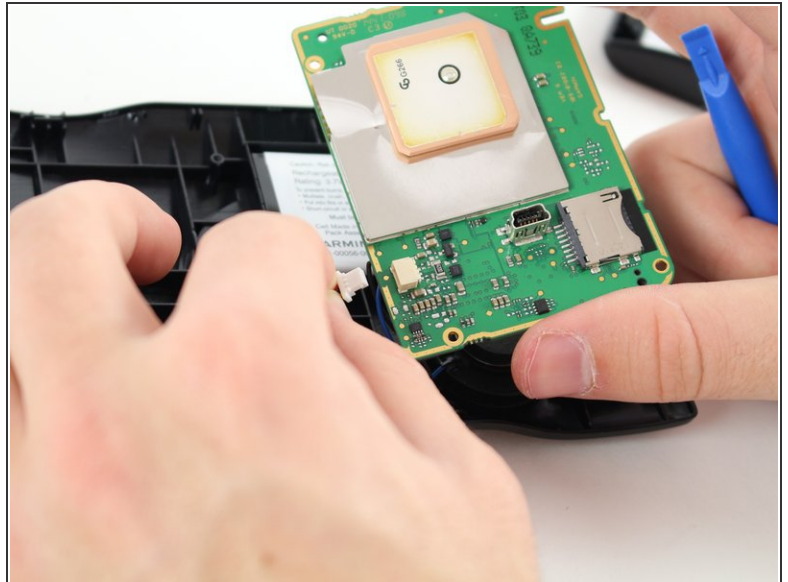
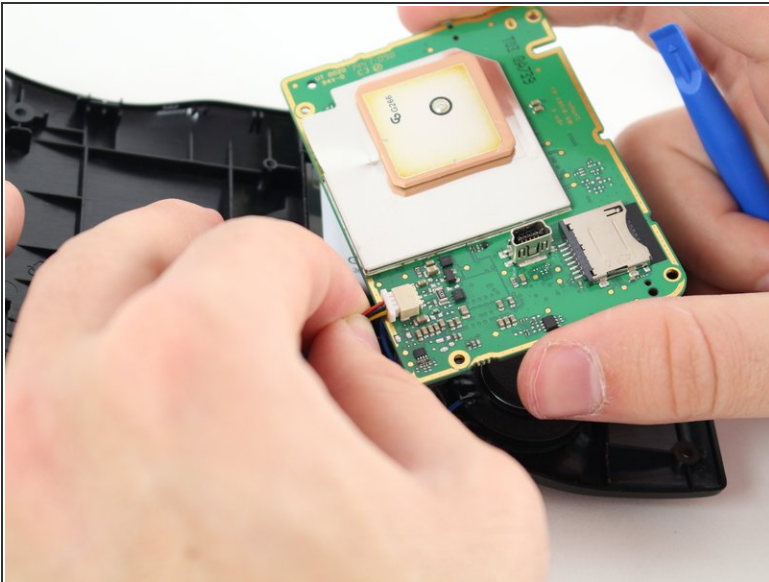


## Step 3 — Battery



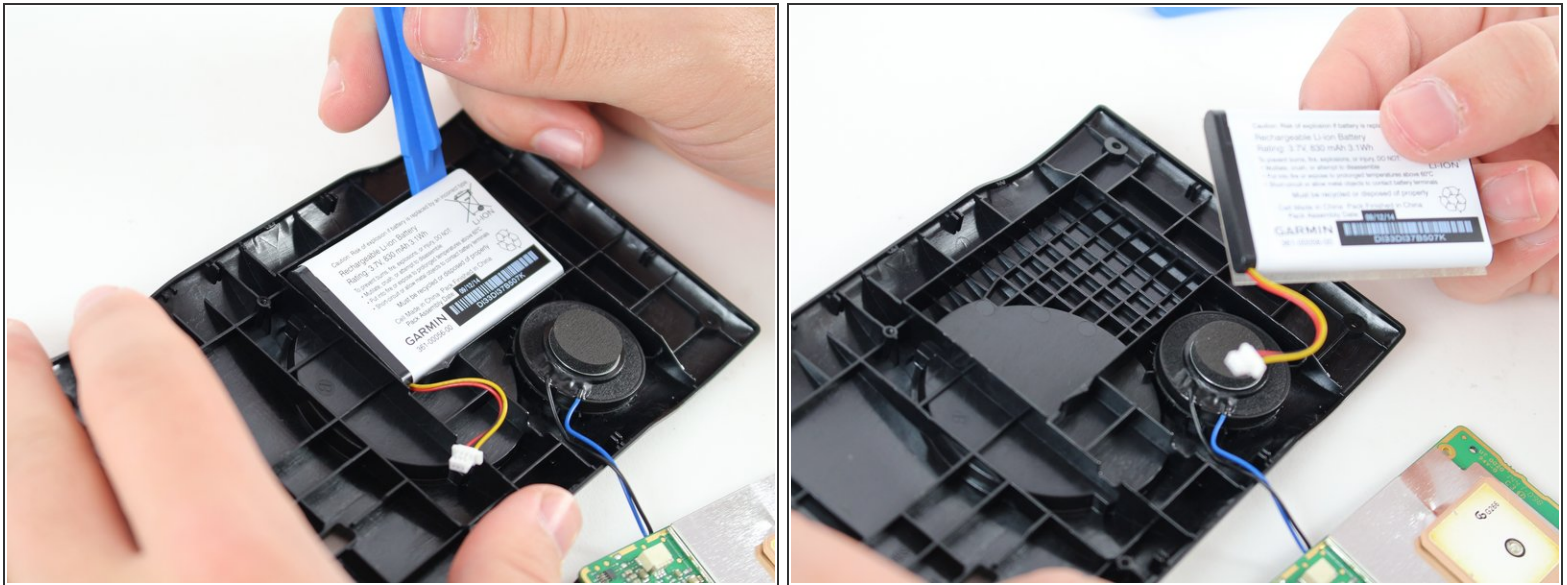
- Using the T5 Torx screwdriver, unscrew the two **5.6mm** screws at the top right and bottom right corners of the motherboard.

## Step 4



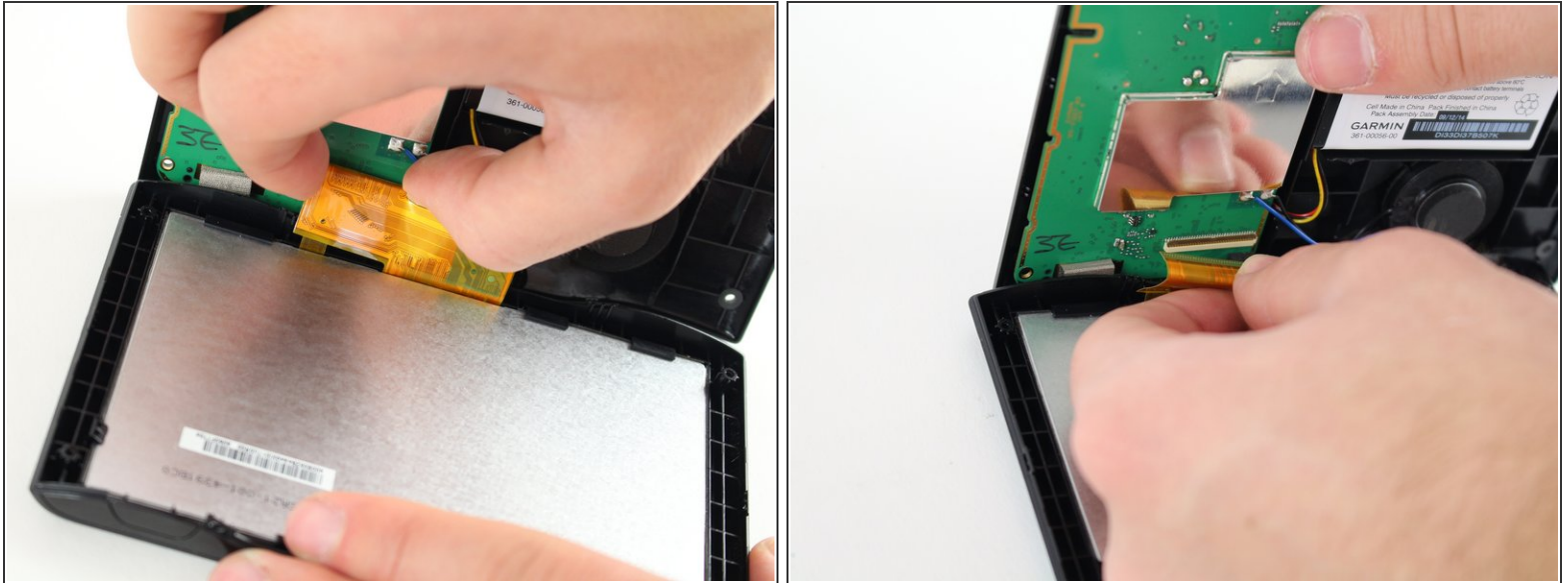
- Gently unplug the wire connecting the battery to the small socket on the back of the motherboard.

## Step 5



- Using a plastic opening tool, pry the battery from the back cover of the device. There may be an adhesive sticker keeping it in place, so you may need to apply some force.
- The battery should now be completely detached from the other parts.

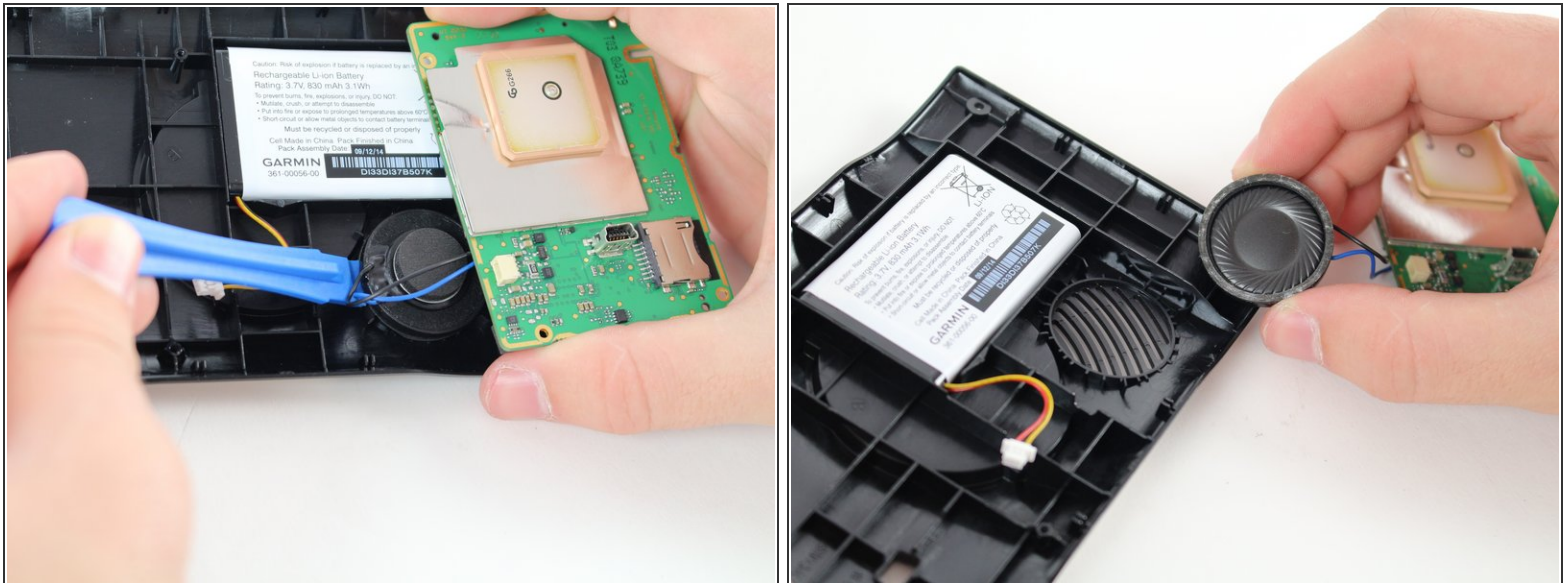
## Step 6 — USB Charge Port



- On the motherboard, lift the small plate that holds the orange ribbon wire in place.
- Gently disconnect the ribbon wire from its connection to the motherboard.



## Step 7



- Using a plastic opening tool, pry the speaker from the back plate of the device. There may be a small amount of adhesive connecting the two, so you may need to use a small amount of force.
- The motherboard and USB charge port should now be completely detached from the other parts of the device, and a new one can now be placed.

To reassemble your device, follow these instructions in reverse order.