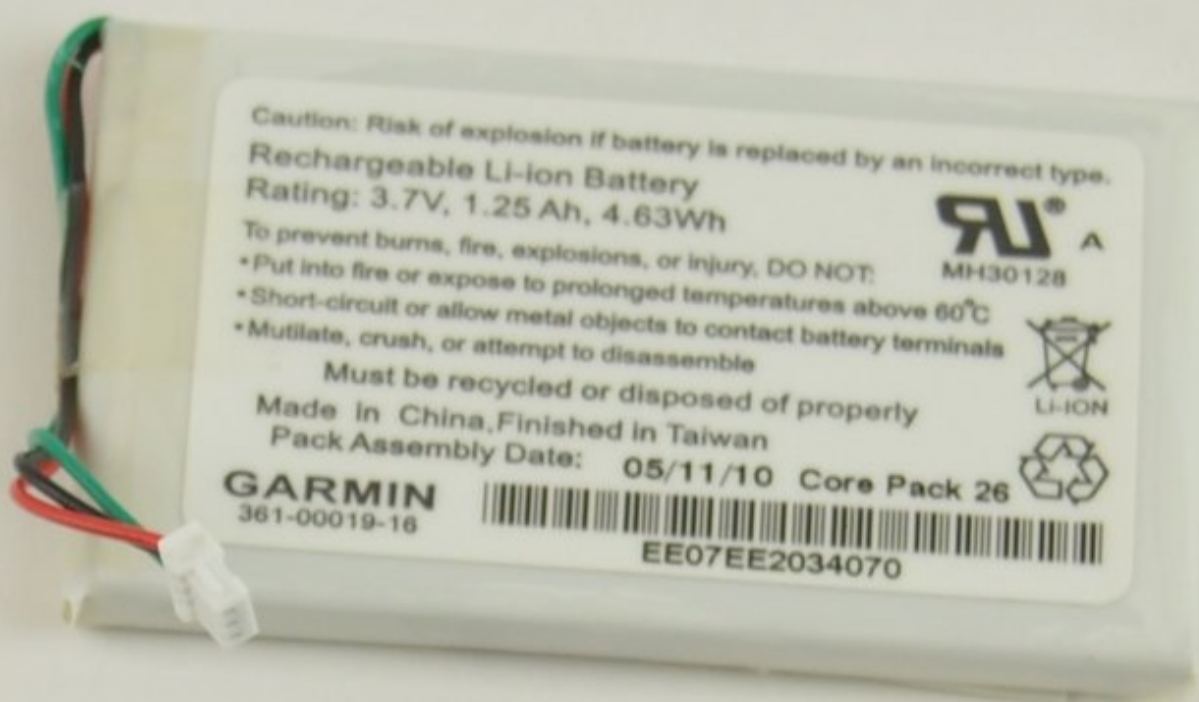




# Garmin Nuvi 1490T Battery Replacement

Guide on how to remove the battery for replacement.

Written By: Ricardo Solis



# INTRODUCTION

Use this guide to replace the battery of your Garmin Nuvi 1490T GPS.

---

## TOOLS:

- [iFixit Opening Tools](#) (1)
  - [T5 Torx Screwdriver](#) (1)
  - [Tweezers](#) (1)
  - [Heavy-Duty Spudger](#) (1)
-

## Step 1 — Front Frame Panel



- ❗ Power off your GPS before moving on.
- Locate the crevice that separates the frame from the body.

## Step 2



- Carefully insert the plastic prying tool into the crevice to separate the frame from the body.
- ⚠ Applying excessive force can lead to a damaged or scratched display screen.

### Step 3



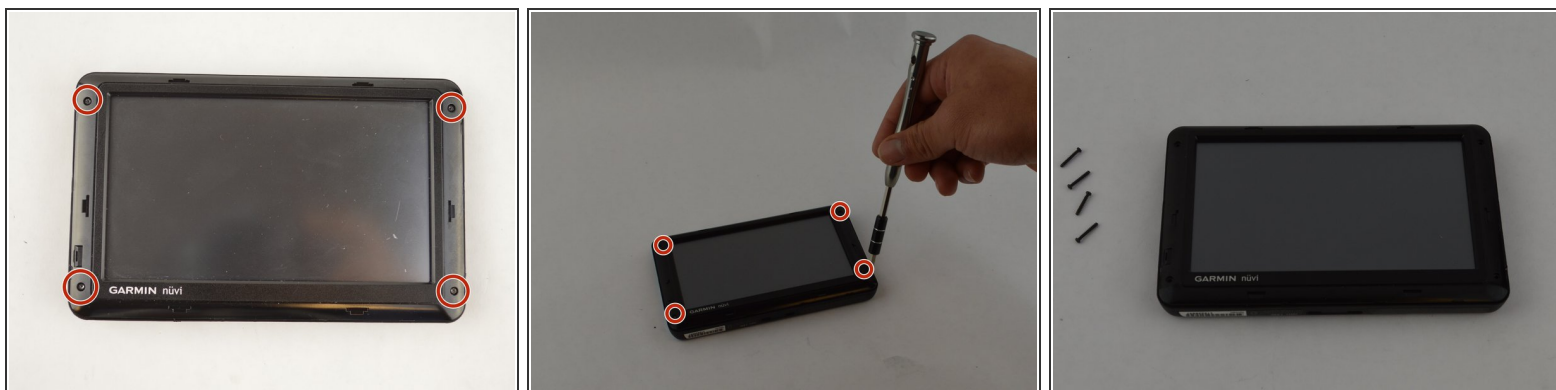
- Slide the plastic prying tool around the perimeter to completely remove the frame.

### Step 4 — Second Frame Panel



- After removing first frame your GPS should look like this

## Step 5



- Remove the four 11.0 mm screws using the Torx T5 screwdriver.

## Step 6



- Using the plastic prying tool, dislodge the frame from the body of the device.
- Using your hands, completely disconnect the frame from the body.
- Set the pieces of the frame aside.

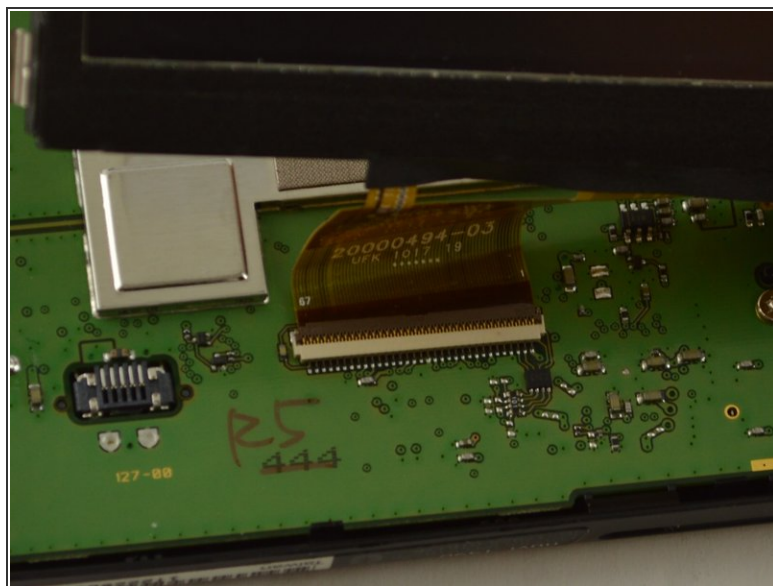
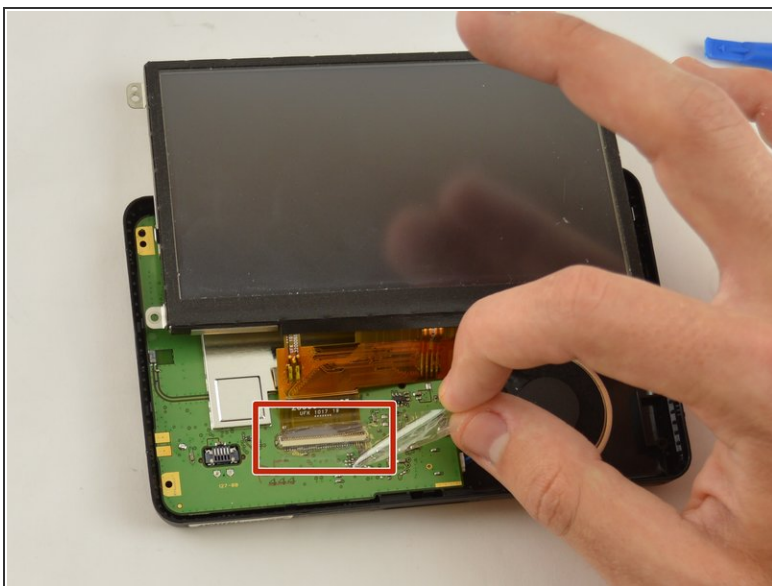


## Step 7 — Display Screen



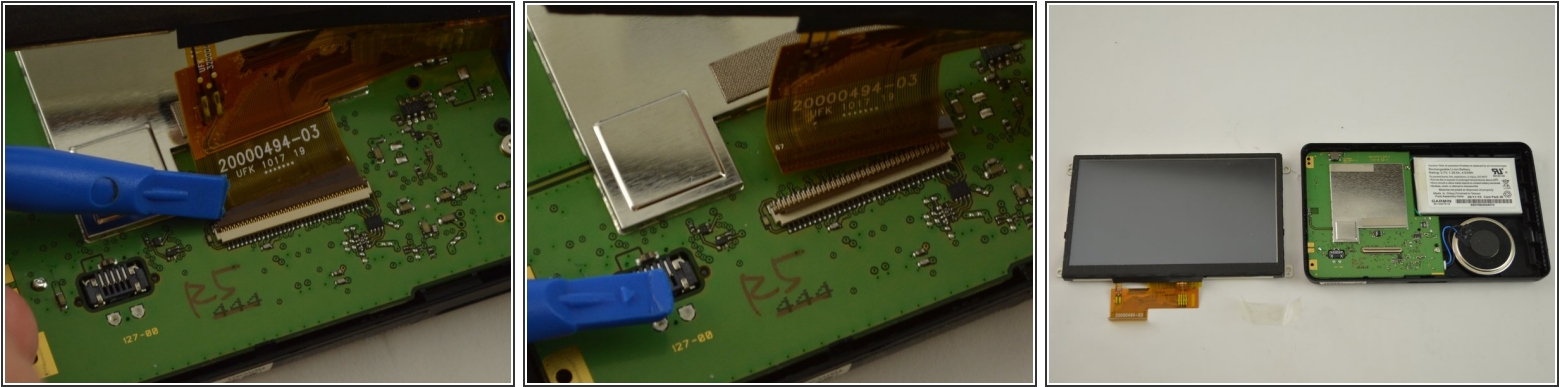
- Gently lift up the display screen using your fingers to make sure the only thing connecting it to the body is the ribbon cable.

## Step 8




- Remove the piece of tape that is covering the connecting point of the motherboard and display.

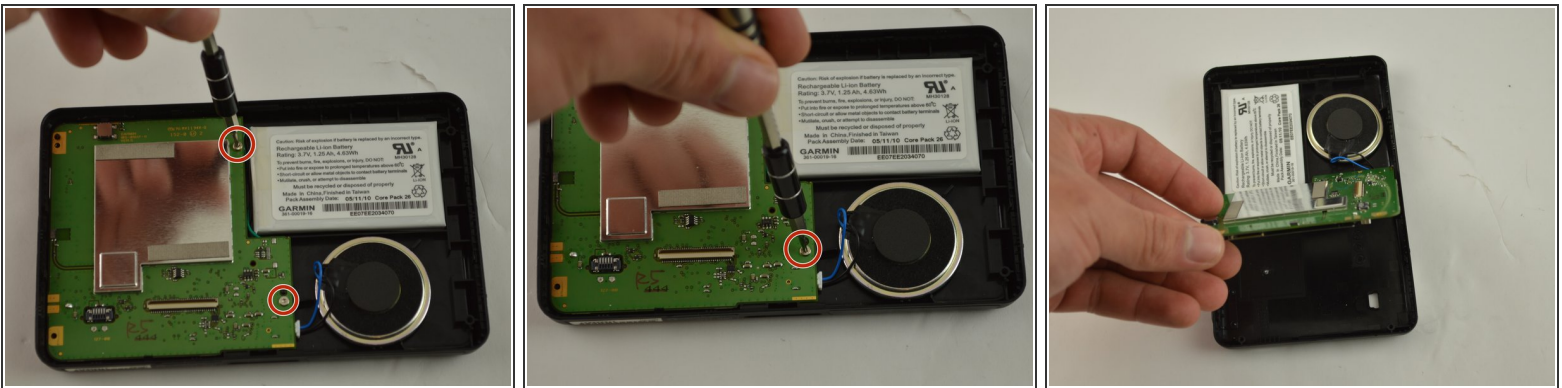
## Step 9



- Using the plastic opening tool or your fingers, lift up the ZIF connector holding the ribbon cable in place.
- Carefully pull the ribbon cable out of the connector with tweezers or two fingers.
- Gently disconnect the display by pulling upward. Set display aside.

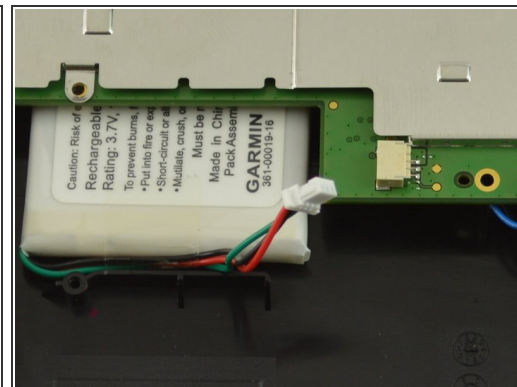
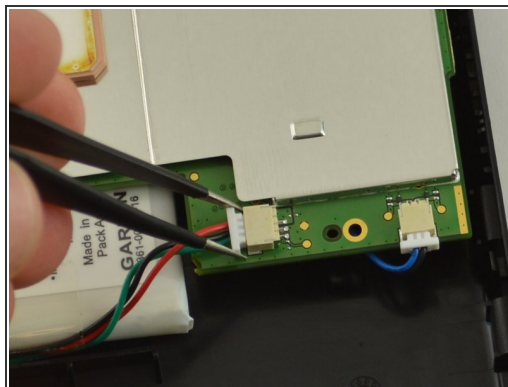
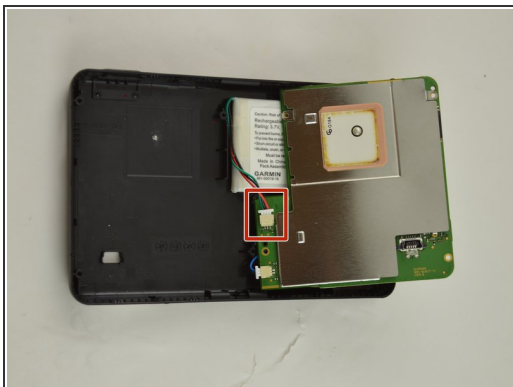
 If the display screen does not disconnect easily, make sure the ZIF connector is no longer holding it in place.

## Step 10 — Battery



- Using the T5 Torx screw driver, remove the two 5.0 mm screws.
- Using your hands, lift up the motherboard and fold it over.

## Step 11




- Fold motherboard out of the way to reveal the white plastic end of the battery plug.
- Using the tweezers, pull the white plastic connector to disconnect the battery from the motherboard.
- Let the cord hang unattached.



## Step 12



- Return motherboard back to original position by flipping it back over.
- Using the nylon spudger, dislodge the battery out of its socket.

 Use a tool that is ESD-safe such as a nylon spudger or a plastic prying tool. Never use a metal spudger to take out the battery.

To reassemble your device, follow these instructions in reverse order.