



Garmin Nuvi 1490T Display Screen Replacement

A guide in removing the display screen in order to replace or repair.

Written By: Ricardo Solis



INTRODUCTION

Use this guide to replace your Garmin Nuvi 1490T display screen.



TOOLS:

- [iFixit Opening Tools](#) (1)
 - [T5 Torx Screwdriver](#) (1)
-

Step 1 — Front Frame Panel



- ❗ Power off your GPS before moving on.
- Locate the crevice that separates the frame from the body.

Step 2



- Carefully insert the plastic prying tool into the crevice to separate the frame from the body.
- ⚠ Applying excessive force can lead to a damaged or scratched display screen.

Step 3



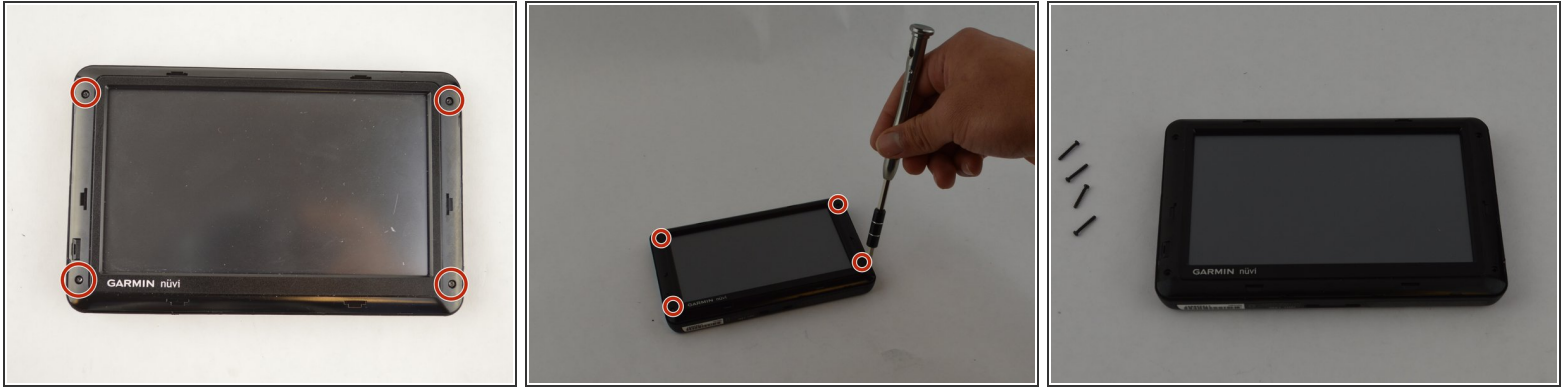
- Slide the plastic prying tool around the perimeter to completely remove the frame.

Step 4 — Second Frame Panel



- After removing first frame your GPS should look like this

Step 5



- Remove the four 11.0 mm screws using the Torx T5 screwdriver.

Step 6



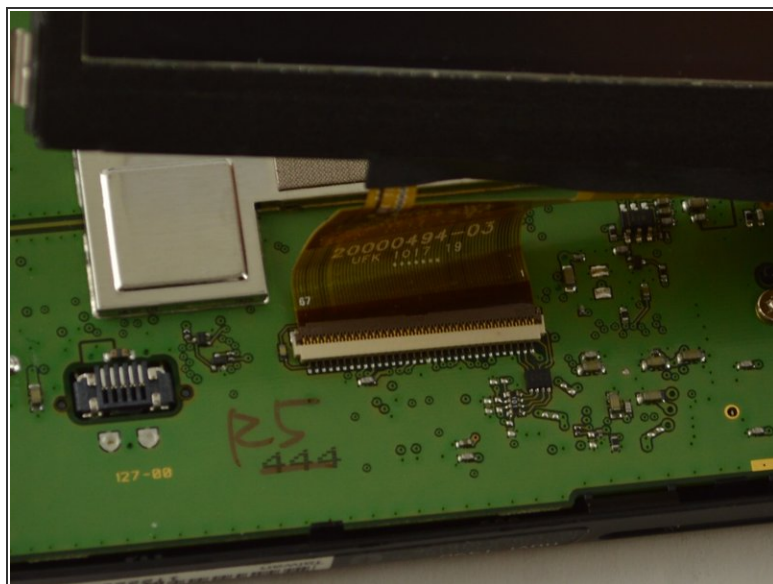
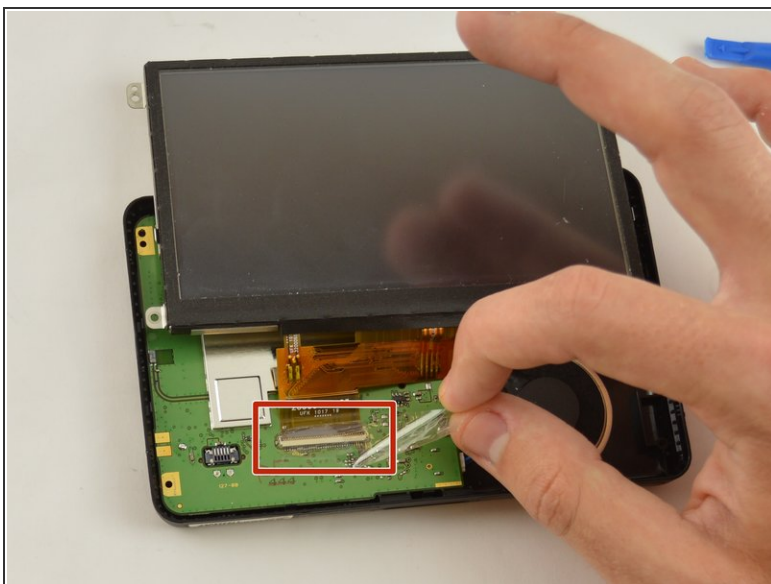
- Using the plastic prying tool, dislodge the frame from the body of the device.
- Using your hands, completely disconnect the frame from the body.
- Set the pieces of the frame aside.

Step 7 — Display Screen



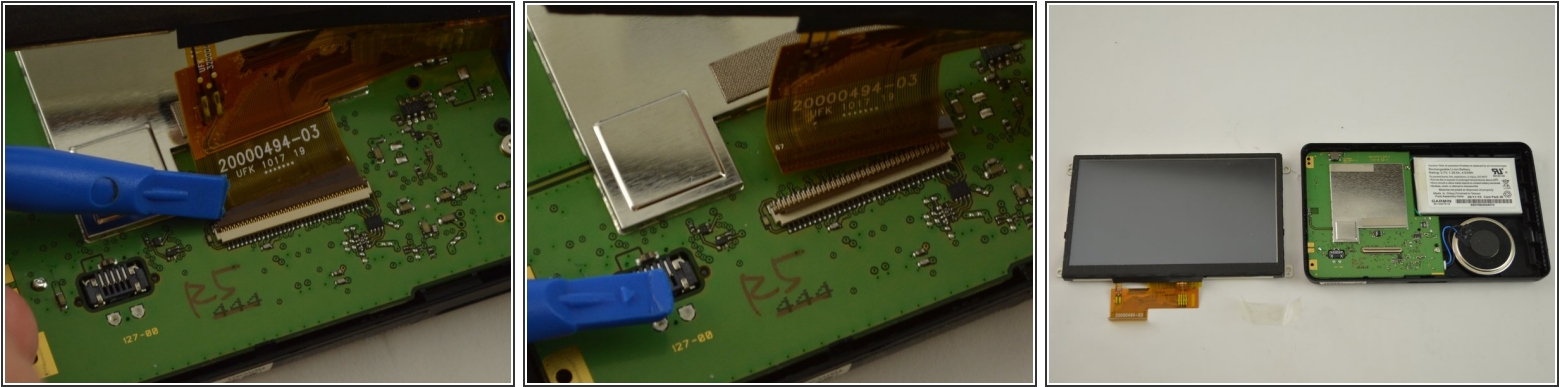
- Gently lift up the display screen using your fingers to make sure the only thing connecting it to the body is the ribbon cable.

Step 8




- Remove the piece of tape that is covering the connecting point of the motherboard and display.

Step 9



- Using the plastic opening tool or your fingers, lift up the ZIF connector holding the ribbon cable in place.
- Carefully pull the ribbon cable out of the connector with tweezers or two fingers.
- Gently disconnect the display by pulling upward. Set display aside.

 If the display screen does not disconnect easily, make sure the ZIF connector is no longer holding it in place.

To reassemble your device, follow these instructions in reverse order.