



# Garmin Nuvi 1490T Second Frame Panel Replacement

Prerequisite only: This guide will show you how to remove the frame of the Garmin Nuvi 1490T.

Written By: Ricardo Solis



# INTRODUCTION

Prerequisite only: This guide will show you how to remove the frame of the Garmin Nuvi 1490T.



## TOOLS:

- [T5 Torx Screwdriver](#) (1)
  - [iFixit Opening Tools](#) (1)
-

## Step 1 — Front Frame Panel



- ❗ Power off your GPS before moving on.
- Locate the crevice that separates the frame from the body.

## Step 2



- Carefully insert the plastic prying tool into the crevice to separate the frame from the body.
- ⚠ Applying excessive force can lead to a damaged or scratched display screen.

### Step 3



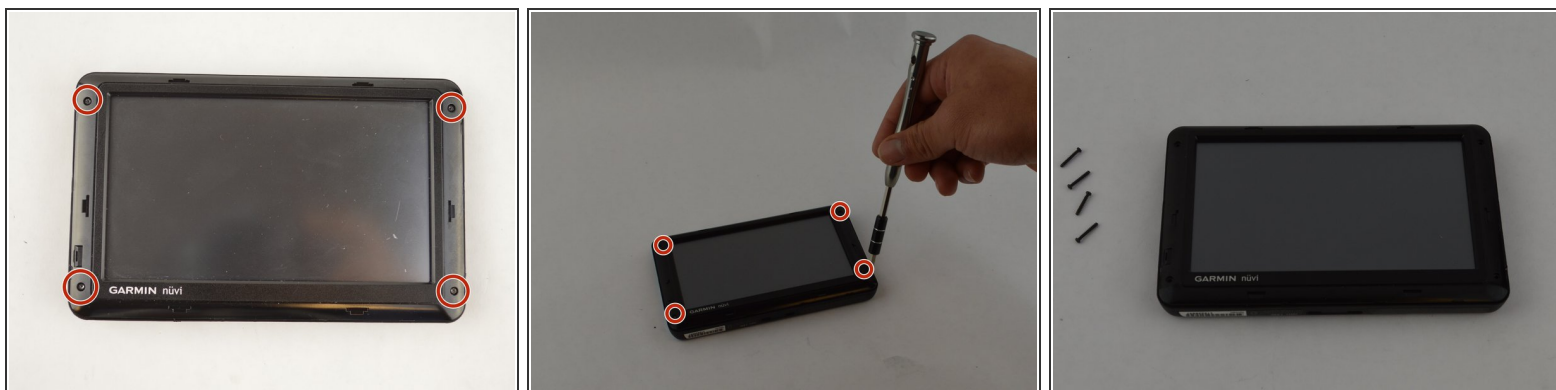
- Slide the plastic prying tool around the perimeter to completely remove the frame.

### Step 4 — Second Frame Panel



- After removing first frame your GPS should look like this

## Step 5



- Remove the four 11.0 mm screws using the Torx T5 screwdriver.

## Step 6



- Using the plastic prying tool, dislodge the frame from the body of the device.
- Using your hands, completely disconnect the frame from the body.
- Set the pieces of the frame aside.

To reassemble your device, follow these instructions in reverse order.