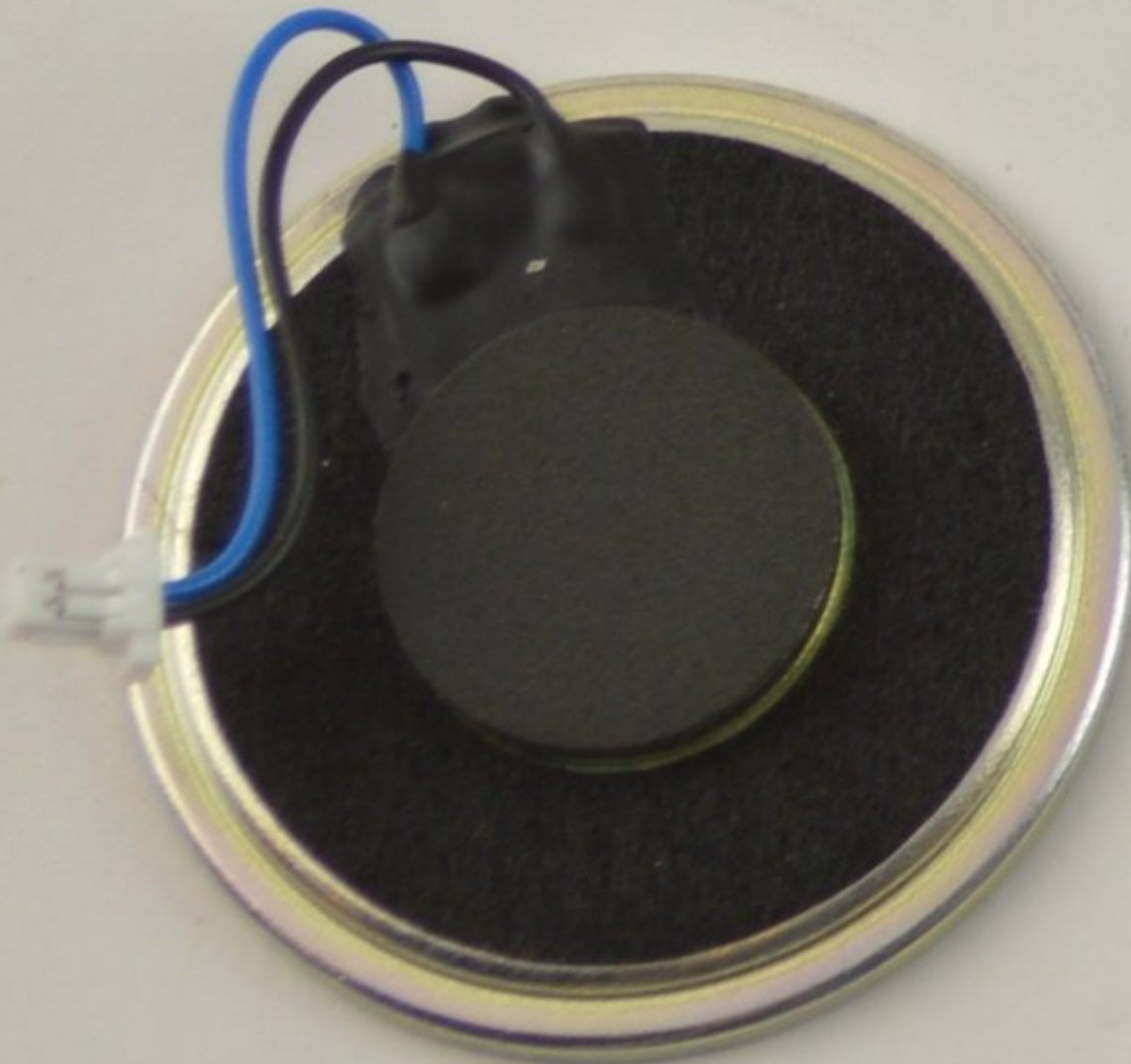




# Garmin Nuvi 1490T Speaker Replacement

A simple guide in removing the speaker.

Written By: Ricardo Solis



# INTRODUCTION

Use this guide to replace your speaker for your Garmin Nuvi 1490T.



## TOOLS:

- [Metal Spudger](#) (1)
  - [Tweezers](#) (1)
  - [iFixit Opening Tools](#) (1)
  - [T5 Torx Screwdriver](#) (1)
-

## Step 1 — Front Frame Panel



- ❗ Power off your GPS before moving on.
- Locate the crevice that separates the frame from the body.

## Step 2



- Carefully insert the plastic prying tool into the crevice to separate the frame from the body.
- ⚠ Applying excessive force can lead to a damaged or scratched display screen.

### Step 3



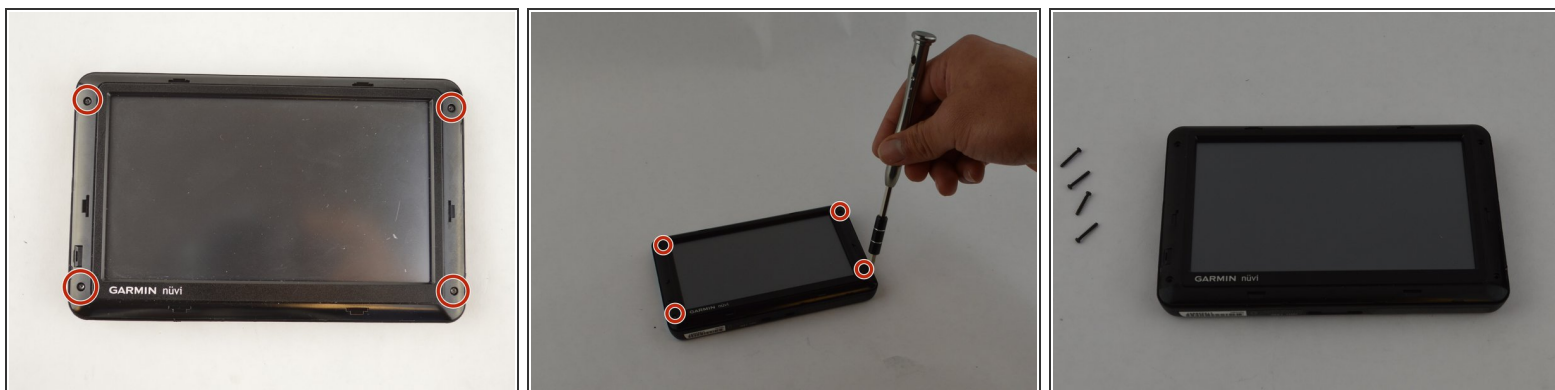
- Slide the plastic prying tool around the perimeter to completely remove the frame.

### Step 4 — Second Frame Panel



- After removing first frame your GPS should look like this

## Step 5



- Remove the four 11.0 mm screws using the Torx T5 screwdriver.

## Step 6



- Using the plastic prying tool, dislodge the frame from the body of the device.
- Using your hands, completely disconnect the frame from the body.
- Set the pieces of the frame aside.

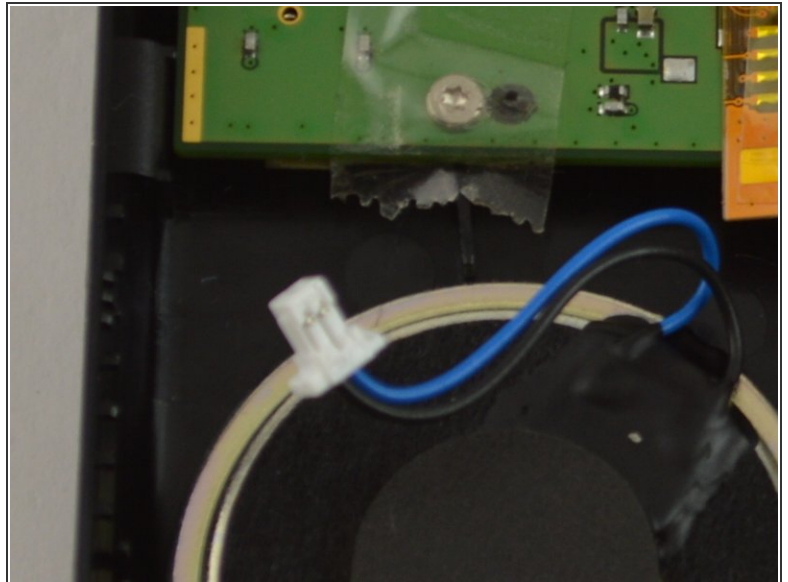
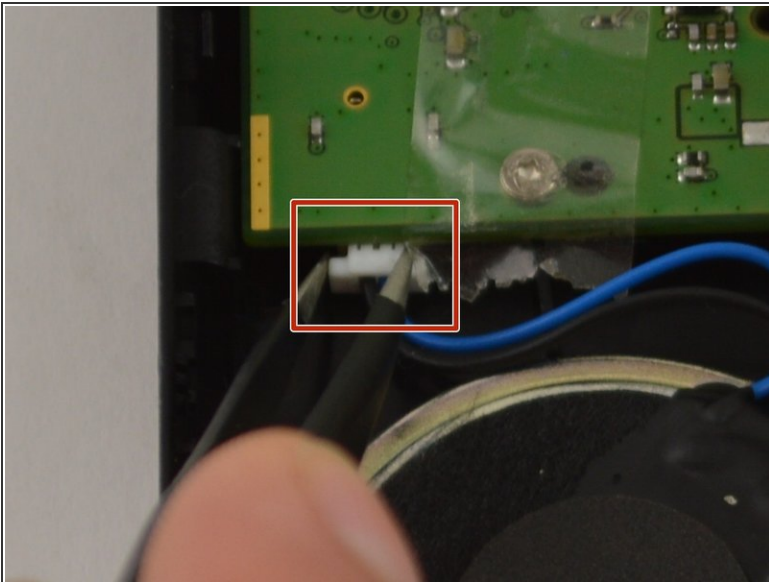


## Step 7 — Speaker



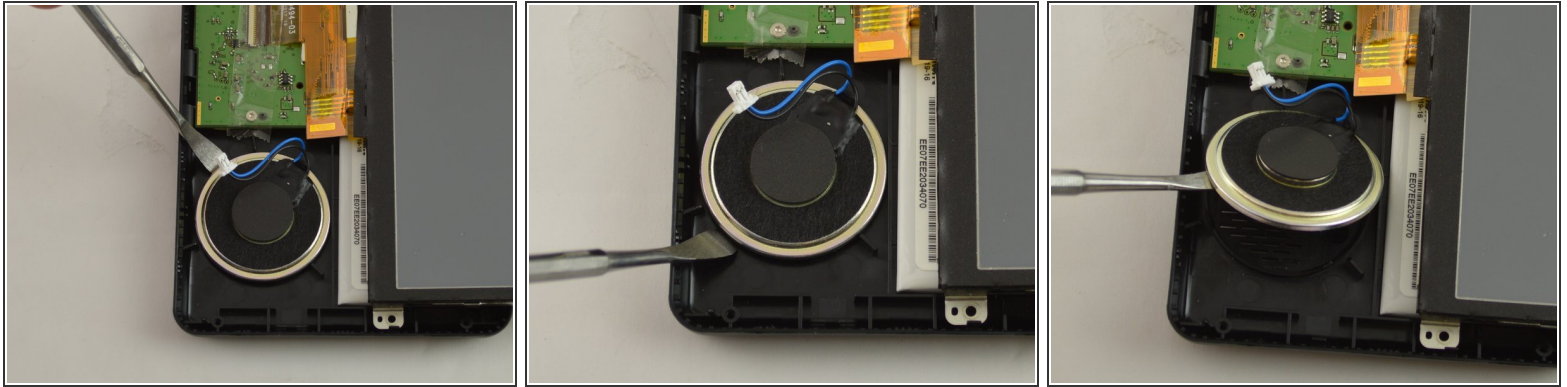
- Carefully move the display out of the way of the speaker revealing the blue and black cord from the speaker.

## Step 8




- Using tweezers, gently clamp onto the white plastic end of the speaker connector.
- Remove it by pulling slightly towards the speaker.

## Step 9



- Wedge a nylon spudger into the crevice to begin to dislodge it from the body.

 When working with electronics, it's important to choose a tool that's ESD-safe to avoid accidental damage to the device. The metal spudger is great when you need serious prying power, but the regular black nylon spudger or a plastic opening tool should be used whenever possible.

- Slide the tool around the perimeter to fully dislodge the speaker.

To reassemble your device, follow these instructions in reverse order.