



Garmin Nuvi 1490T USB Port Replacement

Replace your broken USB port to restore your charging ability to your device.

Written By: Ricardo Solis



INTRODUCTION

Problems with charging the battery? Is the USB port damaged where it is no longer able to plug into the charging cable? It might be time to replace your USB port. After removing the second frame panel be sure to read the Cautions and steps thoroughly before proceeding.

TOOLS:

- [iFixit Opening Tools](#) (1)
 - [T5 Torx Screwdriver](#) (1)
 - [Tweezers](#) (1)
 - [Soldering Iron](#) (1)
-

Step 1 — Front Frame Panel



- ❗ Power off your GPS before moving on.
- Locate the crevice that separates the frame from the body.

Step 2



- Carefully insert the plastic prying tool into the crevice to separate the frame from the body.
- ⚠ Applying excessive force can lead to a damaged or scratched display screen.

Step 3



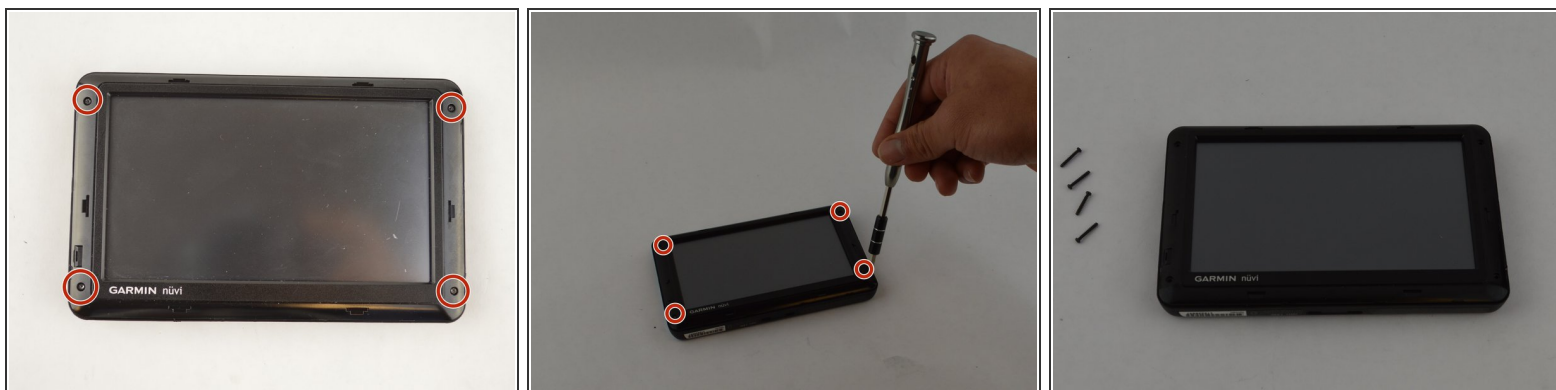
- Slide the plastic prying tool around the perimeter to completely remove the frame.

Step 4 — Second Frame Panel



- After removing first frame your GPS should look like this

Step 5



- Remove the four 11.0 mm screws using the Torx T5 screwdriver.

Step 6



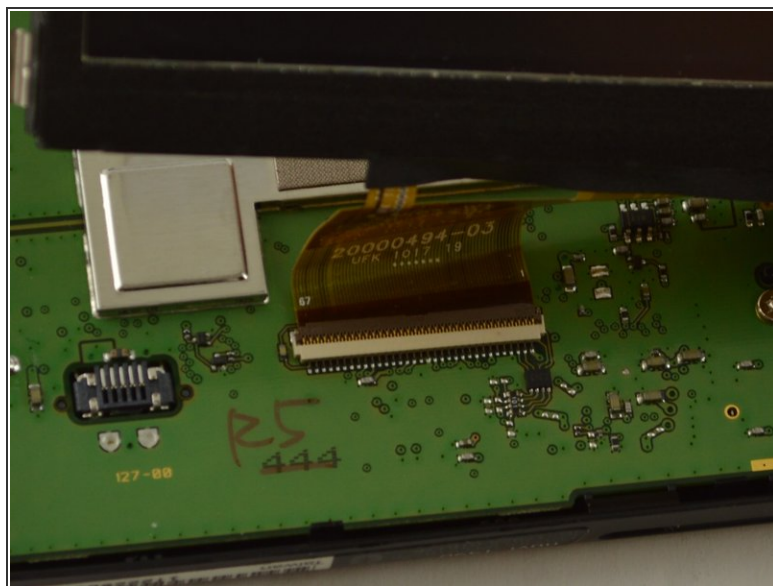
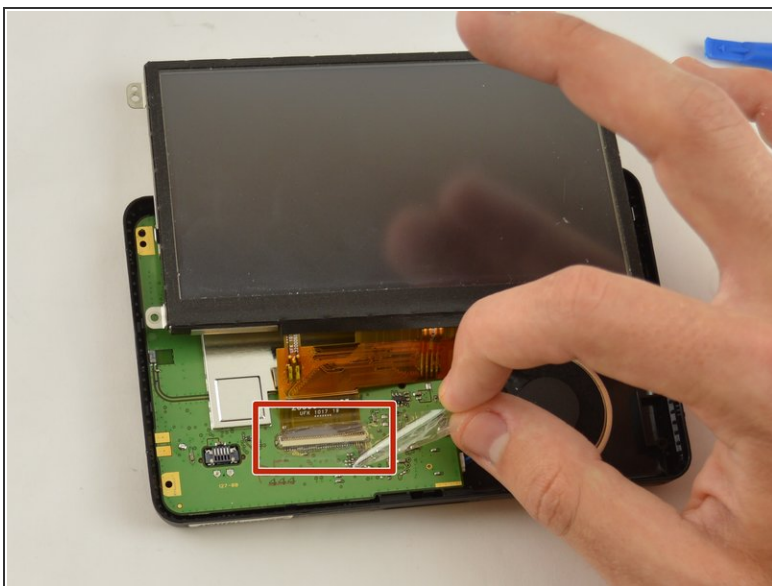
- Using the plastic prying tool, dislodge the frame from the body of the device.
- Using your hands, completely disconnect the frame from the body.
- Set the pieces of the frame aside.

Step 7 — Display Screen



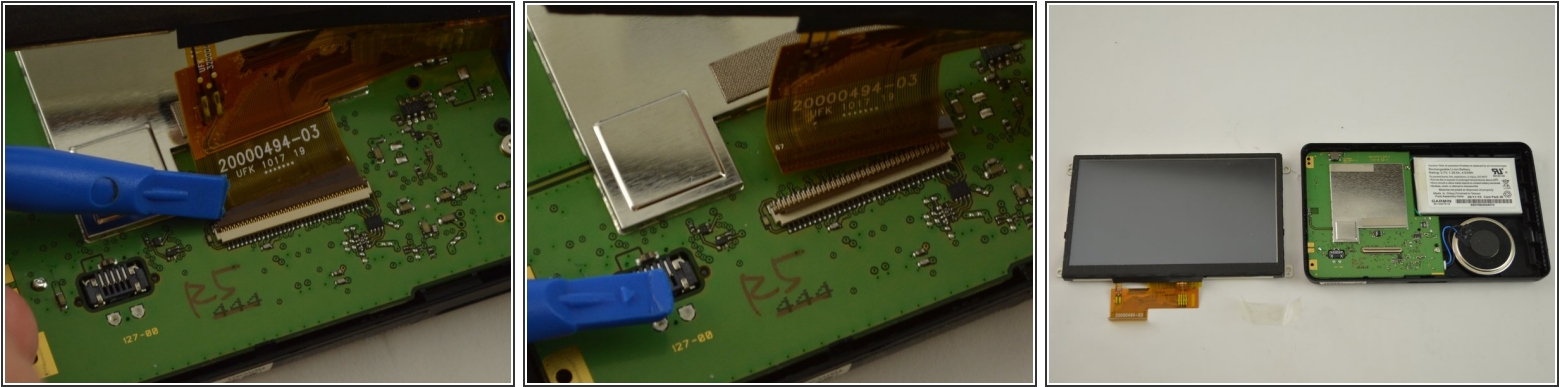
- Gently lift up the display screen using your fingers to make sure the only thing connecting it to the body is the ribbon cable.

Step 8




- Remove the piece of tape that is covering the connecting point of the motherboard and display.

Step 9



- Using the plastic opening tool or your fingers, lift up the ZIF connector holding the ribbon cable in place.
- Carefully pull the ribbon cable out of the connector with tweezers or two fingers.
- Gently disconnect the display by pulling upward. Set display aside.

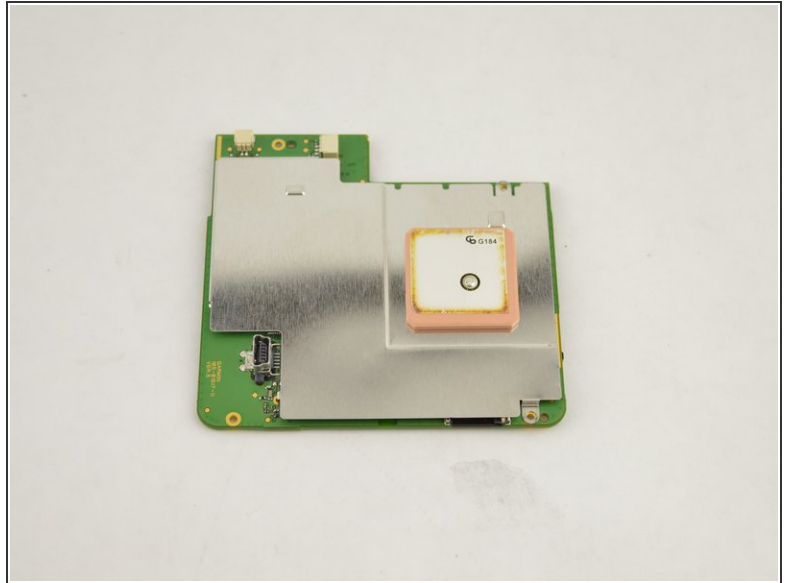
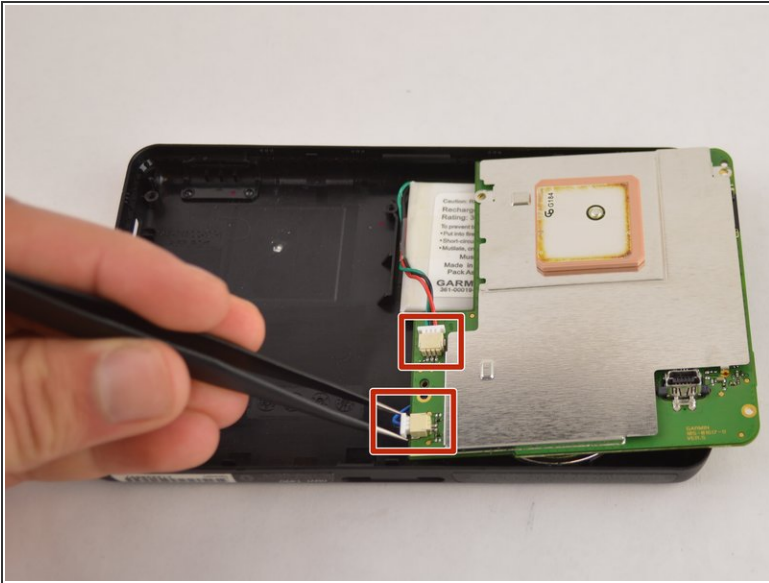
 If the display screen does not disconnect easily, make sure the ZIF connector is no longer holding it in place.

Step 10 — USB Port



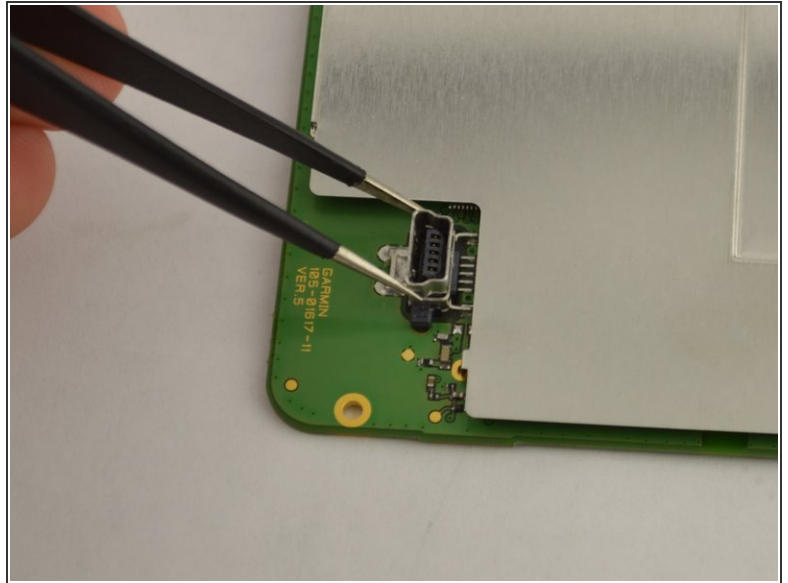
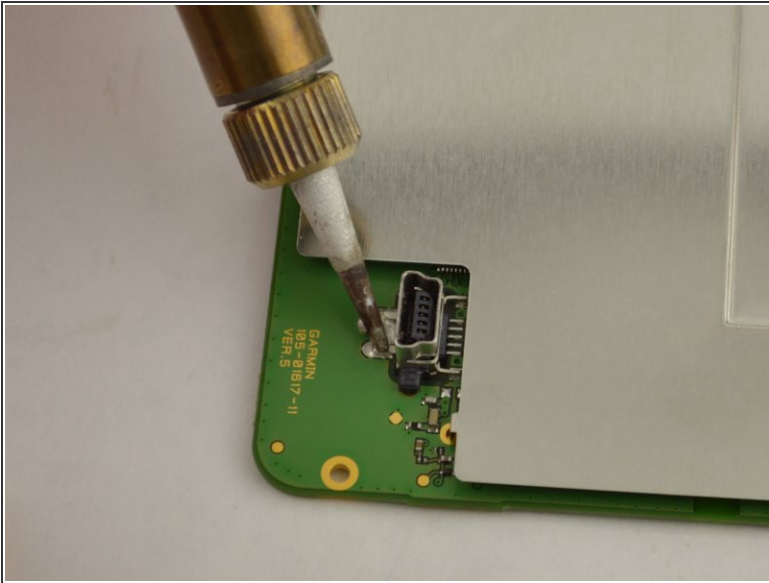
- Use your T5 Torx screwdriver and unscrew the two 5.0 mm screws on the motherboard.


Step 11



- Flip the motherboard over towards the battery.
- Use your tweezers and disconnect the two wire connectors from the motherboard.
- Pull the motherboard out and locate the USB port.

Step 12



 If this is your first time solder here is a link on how to solder. [How To Solder and Desolder Connections](#)

- Gently and delicately heat up the solder holding the USB port to the circuit board.
- Carefully remove the USB port with your metal tweezers and set it aside

To reassemble your device, follow these instructions in reverse order.